

A bird's-eye view

The Manufacturing Control Tower collects and analyses real-time information to improve decision-making at all stages of the manufacturing process.

MANUFACTURING CONTROL TOWER



Equipment monitoring



Scheduling



Logistics planning



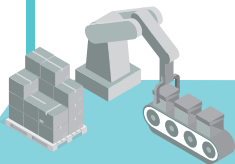
Waste management



Forecast of market demand



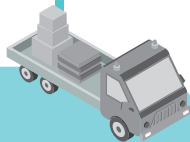
Customer feedback analysis



Factories



Companies



Supply chains