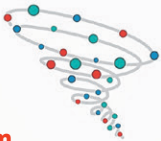


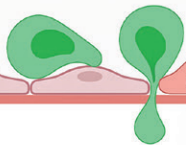
# Danger for recovered patients

## Bloodstream

- 1 When someone gets Covid-19, his body produces inflammatory proteins to activate an immune response against pathogens.



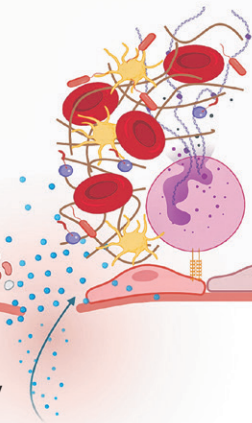
- 2 Killer T cells in excessive numbers post-recovery indicate a persistent and overactive immune response.



## Endothelium

## Interstitial space

- 3 The heightened immune response activates inflammatory proteins, which attack the blood vessels, causing them to leak. This could lead to blood clotting.



- 4 Blood clots that form in major arteries could cause a heart attack, stroke or organ failure.