



**FOR IMMEDIATE RELEASE**

**14 NEW CASES OF LOCALLY TRANSMITTED  
COVID-19 INFECTION**

As of 18 June 2021, 12pm, the Ministry of Health (MOH) has confirmed and verified that there are 14 new cases of locally transmitted COVID-19 infection. The cases are in the community, and there are no new cases in the dormitories. Of the 14 cases, 5 are linked to previous cases and have already been placed on quarantine. 9 were detected through surveillance, amongst whom 5 are linked to previous cases and 4 are currently unlinked. There are 2 imported cases, who have already been placed on Stay-Home Notice (SHN) or isolated upon arrival in Singapore. Amongst the new cases today, 4 are asymptomatic, and were detected from our proactive screening and surveillance, while 12 were symptomatic.

**Summary of new cases**

		Breakdown by		Breakdown by	
	Number of cases	Already in quarantine/ isolation before detection	Detected from surveillance	Symptomatic	Asymptomatic
<b>Cases in the community</b>	14	5	9	10	4
<b>Cases residing in dormitories</b>	0	0	0	0	0
<b>Imported cases</b>	2	2	0	2	0
<b>Total</b>	16				

2. Overall, the number of new cases in the community has increased from 36 cases in the week before to 104 cases in the past week. The number of unlinked cases in the community has also increased from 9 cases in the week before to 19 cases in the past week. We will continue to closely monitor these numbers, as well as the cases detected through our surveillance programme.

3. Amongst the 137 confirmed cases reported from 12 June to 18 June, 50 cases have tested positive for their serology tests, 76 have tested negative, and 11 serology test results are pending.

## Case Details

### a) Cases in the community: 14

There are 14 cases in the community today, of whom 10 are linked to previous cases and 4 are currently unlinked.

#### Currently unlinked cases

Detected through surveillance:

Case 64308 is a 69 year-old male China national who is a retiree. He is a resident at NTUC Health Senior Group Home at Bukit Merah View. He was tested for COVID-19 on 16 June as part of the Home's surveillance testing for residents, and his pooled test result came back positive on 17 June. An individual test was administered on 17 June, and he developed a runny nose on the same day. His individual test result came back positive for COVID-19 infection on 17 June. His serology test result is pending. Case 64308 received his first dose of COVID-19 vaccine on 11 May, and the second dose on 1 June.

Case 64310 is a 67 year-old male Singaporean who is a retiree. He developed a fever and runny nose on 17 June and sought medical treatment at a General Practitioner (GP) clinic on the same day, where he was administered both an antigen rapid test (ART) and polymerase chain reaction (PCR) test. He was immediately isolated when his ART result came back positive. His PCR test result also came back positive for COVID-19 infection on 17 June. His serology test result is pending. Case 64310 received his first dose of COVID-19 vaccine on 18 March, and the second dose on 8 April.

Case 64311 is a 51 year-old female Singaporean who is a homemaker. She is asymptomatic, and was detected when she visited a GP clinic for an unrelated medical condition on 15 June, and was tested for COVID-19 as she stays in the Bukit Merah View area. Her test result came back positive for COVID-19 infection on 17 June. Her serology test result is negative for the N antigen, which suggests the presence of early infection. Case 64311 received her first dose of COVID-19 vaccine on 18 April, and the second dose on 9 May.

Case 64318 is an 83 year-old female Singaporean who is a retiree. She felt fatigued on 15 June, and developed shortness of breath on 17 June. She sought medical treatment at Singapore General Hospital on 17 June, and was tested for COVID-19 on the same day. Her test result came back positive for COVID-19 infection on 18 June. Her serology test result is pending.

#### 115 Bukit Merah View Market & Food Centre cluster

Already quarantined:

Case 64303 is a 5 year-old male Singaporean who is a student at PCF Sparkletots Preschool (78A Telok Blangah Street 32) and had last gone to school on 21 May. He

is a family member and household contact of Cases 64218<sup>1</sup>, 64241<sup>2</sup>, 64242<sup>3</sup>, 64262<sup>4</sup> and 64304, and was placed on quarantine on 14 June. He was tested for COVID-19 on 14 June during quarantine and his test results came back negative. He was tested again for COVID-19 on 16 June and his test result came back positive for COVID-19 infection on 17 June. His serology test result is negative.

Case 64304 is a 4 year-old female Singaporean who is a student at PCF Sparkletots Preschool (78A Telok Blangah Street 32) and had last gone to school on 21 May. She is a family member and household contact of Cases 64218, 64241, 64242, 64262 and 64303, and was placed on quarantine 14 June. She was tested for COVID-19 on 14 June during quarantine and her test result came back negative. She was tested again for COVID-19 on 16 June and her test result came back positive for COVID-19 infection on 17 June. Her serology test result is negative.

Case 64305 is a 39 year-old male Singaporean who works as a logistics officer at CKD Singapore Pte Ltd. He developed a fever on 16 June. As he had been identified as a family member and household contact of Case 64285<sup>5</sup> and a family member of Cases 64271<sup>6</sup>, 64284<sup>7</sup> and 64316, he was placed on quarantine on 17 June and reported his symptom. He was tested for COVID-19 on 17 June and his test result came back positive for COVID-19 infection on the same day. His serology test result is negative.

Case 64316 is a 69 year-old male Singaporean who is a retiree. He is a family member and household contact of Cases 64271 and 64284, and a family member of Case 64285. He developed chills and lethargy on 14 June but did not seek medical attention. As he had been identified as a close contact of Case 64196<sup>8</sup>, he was placed on quarantine on 16 June. He was tested for COVID-19 on 17 June during quarantine and his test result came back positive for COVID-19 infection on 18 June. His serology test result is pending. Case 64316 received his first dose of COVID-19 vaccine on 21 May, and the second dose on 11 June.

Detected through surveillance:

Case 64298 is an 83 year-old male Singaporean who is a retiree. He resides in the Bukit Merah View area and had visited 115 Bukit Merah View Market & Food Centre. He is asymptomatic, and was detected when he was tested for COVID-19 on 16 June

---

<sup>1</sup> Case 64218 is a 42 year-old male Singaporean who works as a hawker at Telok Blangah Drive Food Centre. He was confirmed to have COVID-19 infection on 14 June.

<sup>2</sup> Case 64241 is a 12 year-old female Singaporean who is a student at CHIJ St Theresa's Convent. She was confirmed to have COVID-19 infection on 15 June.

<sup>3</sup> Case 64242 is a 33 year-old female Singaporean who works in an administrative role at South Asia Construction Pte Ltd, and part-time at Telok Blangah Food Centre. She was confirmed to have COVID-19 infection on 15 June.

<sup>4</sup> Case 64262 is a 15 year-old female Singaporean who is a student at Gan Eng Seng School. She was confirmed to have COVID-19 infection on 16 June.

<sup>5</sup> Case 64285 is a 10 year-old female Singaporean who is a student at Zhangde Primary School. She was confirmed to have COVID-19 infection on 16 June.

<sup>6</sup> Case 64271 is a 23 year-old female Singaporean who works as a patient service associate at Singapore General Hospital. She was confirmed to have COVID-19 infection on 16 June.

<sup>7</sup> Case 64284 is a 62 year-old female Singaporean who is a homemaker. She was confirmed to have COVID-19 infection on 16 June.

<sup>8</sup> Case 64196 is a 65 year-old male Singaporean who is a food stall vendor at 115 Bukit Merah View Market & Food Centre. He was confirmed to have COVID-19 infection on 13 June.

as part of our community surveillance testing for visitors to 115 and 116 Bukit Merah View. His test result came back positive for COVID-19 infection on 17 June. His serology test result is negative.

Case 64299 is a 35 year-old female China national who works as a cashier at Bake King. She is a close contact of Case 64288<sup>9</sup>. She developed a cough and sore throat on 16 June and sought medical treatment at a GP clinic on the same day, where she was tested for COVID-19. Her test result came back positive for COVID-19 infection on 17 June. Her serology test result is negative.

Case 64300 is a 72 year-old male Singaporean who is a retiree, and frequently visited 115 Bukit Merah View Market and Food Centre. He developed a cough and fever on 15 June but did not seek medical attention. He was detected when he underwent a COVID-19 test on 16 June as part of our community surveillance testing for visitors to 115 and 116 Bukit Merah View. He was immediately isolated when his ART result came back positive for COVID-19. His PCR test result also came back positive for COVID-19 infection on 17 June. His serology test result is pending. Case 64300 received his first dose of COVID-19 vaccine on 18 March, and the second dose on 9 April.

Case 64307 is a 64 year-old male Singaporean who is employed by KAL Transport Pte Ltd as a school bus driver for Tanglin Trust School. He stays at the Bukit Merah area and frequently visited the food establishments in the area. He developed a fever, cough and fatigue on 16 June and sought medical treatment at a GP clinic on 17 June, where he underwent both an ART and PCR test. He was immediately isolated when his ART result came back positive. His PCR test result came back positive for COVID-19 infection on 17 June. His serology test result is pending. Case 64307 received his first dose of COVID-19 vaccine on 2 April, and the second dose on 30 April.

Case 64315 is a 42 year-old female Myanmar national who is a foreign domestic worker and had visited 115 Bukit Merah View Market & Food Centre. She developed a cough, runny nose, sore throat and headache on 16 June and sought medical treatment at a GP clinic on 17 June, where she underwent both an ART and PCR test. She was immediately isolated when her ART result came back positive for COVID-19. Her PCR test result came back positive for COVID-19 infection on 18 June. Her serology test result is pending.

### **Case 64183<sup>10</sup> cluster**

Already quarantined:

Case 64312 is a 59 year-old female Singaporean who is a retiree. She is a family member and household contact of Case 64185<sup>11</sup> and a family member of Case 64183,

---

<sup>9</sup> Case 64288 is a 65 year-old male Singaporean who works as a part-time food stall assistant at 115 Bukit Merah View Market and Food Centre. He was confirmed to have COVID-19 infection on 16 June.

<sup>10</sup> Case 64183 is a 68 year-old male Singaporean who works as a landscape gardener at Amozonia Pte Ltd. He was confirmed to have COVID-19 infection on 12 June.

<sup>11</sup> Case 64185 is a 66 year-old male Singaporean who is a retiree. He was confirmed to have COVID-19 infection on 12 June.

and was placed on quarantine on 12 June. She developed a cough on 16 June and reported her symptom. She was tested for COVID-19 on 17 June and her test result came back positive for COVID-19 infection on the same day. Her serology test result is negative.

**b) Cases residing in dormitories: 0**

There are no cases residing in dormitories today.

**c) Imported cases: 2**

There are 2 imported cases today. Both (Cases 64302 and 64306) are Singaporeans who returned from Indonesia.

They have already been placed on SHN or isolated upon arrival in Singapore and were tested while serving SHN.

4. Please refer to the Annexes and MOH's daily Situation Report ([www.moh.gov.sg/covid-19/situation-report](http://www.moh.gov.sg/covid-19/situation-report)) for details.

5. Epidemiological investigations are in progress. In the meantime, all the identified close contacts of the cases have been isolated and placed on quarantine, and will be tested at the start and end of their quarantine period so that we can detect asymptomatic cases. We will also conduct serological tests for the close contacts to determine if the cases could have been infected by them.

6. MOH has been monitoring existing clusters for any further transmission. As there have been no more cases linked to the Changi Airport Terminal 3, Case 63376, and Case 63479 clusters for the past two incubation periods (i.e. 28 days), the clusters have now been closed.

**Update on condition of confirmed cases**

7. 27 more cases of COVID-19 infection have been discharged from hospitals or community isolation facilities. In all, 61,987 have fully recovered from the infection and have been discharged from hospitals or community care facilities.

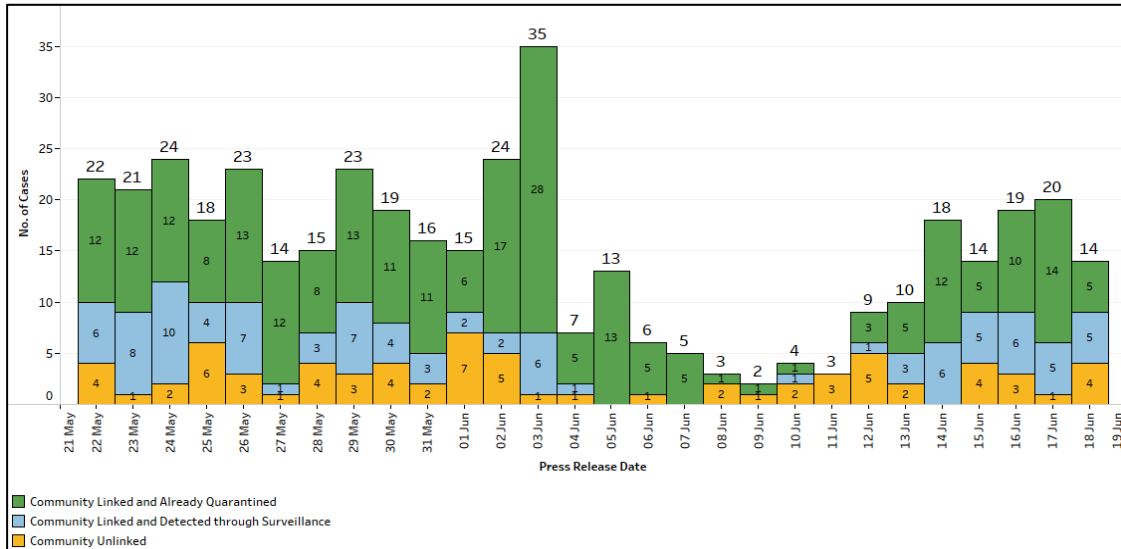
8. There are currently 152 confirmed cases who are still in hospital. Of these, most are stable or improving, and 1 is in critical condition in the intensive care unit. 209 are isolated and cared for at community facilities. These are those who have mild symptoms, or are clinically well but still test positive for COVID-19. 34 have passed away from complications due to COVID-19 infection.

**MINISTRY OF HEALTH  
18 JUNE 2021**

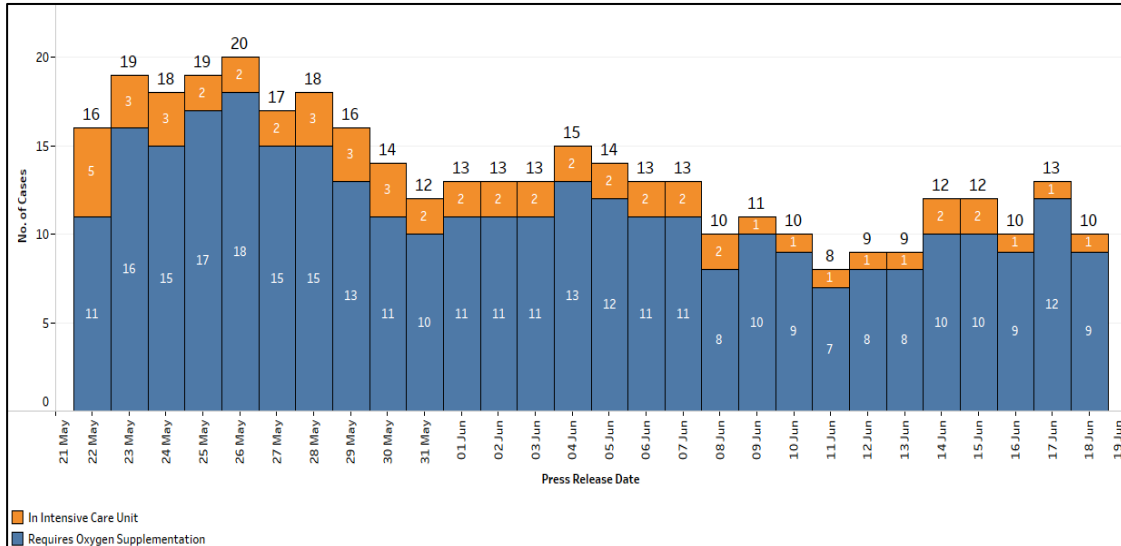
---

Summary of Local COVID-19 Situation

**Figure 1:** Number of Community Unlinked and Linked Cases<sup>12</sup>

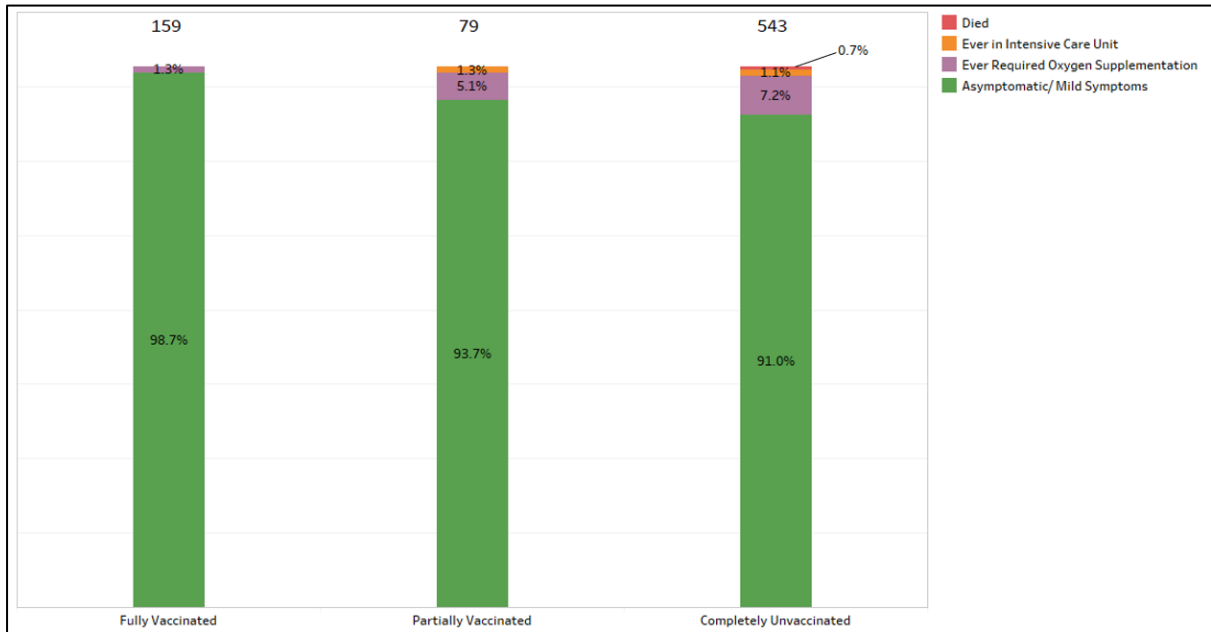


**Figure 2:** Number of Active Cases in Intensive Care Unit or Requiring Oxygen Supplementation



<sup>12</sup> Incorporates re-classifications of earlier reported cases.

**Figure 3:** Breakdown of Local Cases Since 28 April by Vaccination Status and Severity of Condition<sup>13</sup>



<sup>13</sup> Fully vaccinated – more than 14 days after completing vaccination regimen. Partially vaccinated – received 1 dose only of 2-dose vaccine or COVID-19 positive within 14 days of completing vaccination regimen.

**Open Clusters**

Epidemiological investigations and contact tracing have uncovered links between cases.

- i. 3 of the confirmed cases (Cases 64183, 64185 and 64312) are linked to the Case 64183 cluster with the most recent case (Case 64312) linked to the cluster on 17 June. Case 64183 is a 68 year-old male Singaporean who works as a landscape gardener at Amozonia Pte Ltd. He was confirmed to have COVID-19 infection on 12 June.
- ii. 65 of the confirmed cases (Cases 64132, 64158, 64187, 64193, 64195, 64196, 64199, 64201, 64202, 64204, 64205, 64212, 64213, 64216, 64217, 64218, 64221, 64223, 64224, 64225, 64226, 64229, 64231, 64232, 64234, 64239, 64240, 64241, 64242, 64243, 64244, 64246, 64248, 64252, 64257, 64258, 64260, 64261, 64262, 64266, 64267, 64269, 64270, 64271, 64272, 64273, 64274, 64278, 64279, 64280, 64281, 64283, 64284, 64285, 64288, 64296, 64298, 64299, 64300, 64303, 64304, 64305, 64307, 64315 and 64316) are linked to the 115 Bukit Merah View Market & Food Centre cluster with the most recent cases (Cases 64298, 64299, 64300, 64303, 64304, 64305 and 64307) linked to the cluster on 17 June, and Cases 64315 and 64316 linked to the cluster on 18 June. Case 64132 is a 74 year-old male Singaporean who works at a sundry store at 115 Bukit Merah View Market & Food Centre. He was confirmed to have COVID-19 infection on 9 June.
- iii. 13 of the confirmed cases (Cases 64184, 64186, 64191, 64197, 64198, 64200, 64206, 64207, 64208, 64219, 64249, 64251 and 64295) are linked to the Case 64184 cluster with the most recent case (Case 64295) linked to the cluster on 17 June. Case 64184 is a 27 year-old male India national who works as an engineer at Ecoxplore Pte Ltd. He was confirmed to have COVID-19 infection on 12 June.
- iv. 8 of the confirmed cases (Cases 63335, 63354, 63460, 63523, 63579, 63758, 63759 and 63762) are linked to the Pacific Law Corporation cluster with the most recent cases (Cases 63758, 63759 and 63762) linked to the cluster on 26 May. Case 63335 is a 57 year-old female Singaporean who works as an administrative personnel at Pacific Law Corporation. She was confirmed to have COVID-19 infection on 16 May.
- v. 3 of the confirmed cases (Cases 64149, 64180 and 64181) are linked to the MARINA ARIEL cluster, with the most recent cases (Cases 64180 and 64181) linked to the cluster on 12 June. Case 64149 is a 38 year-old male Indonesia national who is employed by Marina Offshore Pte Ltd as a sea crew on board tugboat MARINA ARIEL. He was confirmed to have COVID-19 infection on 11 June.
- vi. 4 of the confirmed cases (Cases 63399, 63900, 63917 and 64182) are linked to the Case 63399 cluster with the most recent case (Case 64182) linked to the cluster on 12 June. Case 63399 is a 35 year-old male Malaysia national who is a kitchen crew at Kota Zheng Zong Bak Kut Teh (Serangoon Gardens). He was confirmed to have COVID-19 infection on 17 May.
- vii. 16 of the confirmed cases (Cases 63160, 63253, 63294, 63300, 63426, 63427, 63428, 63491, 63522, 63526, 63680, 63731, 63751, 63826, 63943 and 64120) are linked to the Changi Prison Complex cluster, with the most recent case (Case 64120) linked to the cluster on 9 June. Case 63160 is a 39 year-old male China national who is employed by SATS Food Services Pte Ltd as a chef at Changi Prison Complex. He was confirmed to have COVID-19 infection on 13 May.



- viii. 13 of the confirmed cases (Cases 63853, 63854, 63874, 63883, 63884, 63885, 63886, 63896, 63903, 63958, 64009, 64076 and 64117) are linked to the NTUC Foodfare (308 Anchorvale Road) cluster with the most recent case (Case 64117) linked to the cluster on 8 June. Case 63853 is a 33 year-old male Malaysia national who works as a kitchen assistant at Hua Zai Eating House Pte Ltd. He was confirmed to have COVID-19 infection on 29 May.
- ix. 33 of the confirmed cases (Cases 63924, 63949, 63950, 63961, 63962, 63974, 63976, 63977, 63979, 63980, 63982, 63983, 63984, 63985, 63986, 63987, 63988, 63989, 63990, 63991, 63992, 63993, 63994, 63995, 63996, 63997, 64001, 64060, 64061, 64062, 64090 64094 and 64108) are linked to the MINDSville@Napiri cluster with the most recent case (Case 64108) linked to the cluster on 7 June. Case 63924 is a 37 year-old female Singaporean who is a resident at MINDSville@Napiri. She was confirmed to have COVID-19 infection on 31 May.
- x. 8 of the confirmed cases (Cases 63936, 63969, 64046, 64048, 64049, 64057, 64091 and 64093) are linked to the Atatcutz Singapore cluster, with the most recent cases (Case 64091) linked to the cluster on 6 June, and Case 64093 linked to the cluster on 7 June. Case 63936 is a 26 year-old male Malaysia national who works as a delivery rider for Pizza Hut (Hougang Green). He was confirmed to have COVID-19 infection on 1 June.
- xi. 6 of the confirmed cases (Cases 63964, 63981, 64010, 64011, 64059 and 64103) are linked to the Case 63964 cluster with the most recent case (Case 64103) linked to the cluster on 7 June. Case 63964 is a 61 year-old female Singaporean who works at NTUC FairPrice (Clementi Avenue 3). She was confirmed to have COVID-19 infection on 1 June.
- xii. 3 of the confirmed cases (Cases 63931, 64020 and 64077) are linked to the Case 63931 cluster, with the most recent case (Case 64077) linked to the cluster on 5 June. Case 63931 is an 82 year-old male Singaporean who is a retiree. He was confirmed to have COVID-19 infection on 1 June.
- xiii. 23 of the confirmed cases (Cases 63534, 63535, 63569, 63603, 63624, 63629, 63668, 63669, 63676, 63682, 63694, 63713, 63717, 63726, 63732, 63791, 63793, 63796, 63834, 63871, 64016, 64056 and 64079) are linked to the McDonald's delivery riders cluster with the most recent case (Case 64079) linked to the cluster on 6 June. Case 63534 is a 27 year-old male Malaysia national who works as a delivery rider for IVIC Logistic Pte Ltd and McDonald's (Bedok Reservoir). He was confirmed to have COVID-19 infection on 20 May.
- xiv. 7 of the confirmed cases (Cases 63721, 63748, 63752, 63933, 64050, 64065 and 64066) are linked to the Tektronix cluster with the most recent cases (Cases 64065 and 64066) linked to the cluster on 5 June. Case 63721 is a 50 year-old male Singaporean who works as an engineer at Tektronix Southeast Asia Pte Ltd. He was confirmed to have COVID-19 infection on 24 May.
- xv. 7 of the confirmed cases (Cases 63714, 63747, 63794, 63909, 64022, 64052 and 64064) are linked to the Case 63714 cluster with the most recent cases (Case 64052) linked to the cluster on 4 June, and Case 64064 linked to the cluster on 5 June. Case 63714 is a 74 year-old male Singaporean who is a retiree. He was confirmed to have COVID-19 infection on 24 May.
- xvi. 5 of the confirmed cases (Cases 63922, 63927, 64024, 64025 and 64047) are linked to the Case 63922 cluster with the most recent case (Case 64047) linked to the cluster on 4 June. Case 63922 is a 56 year-old female Singaporean who is a homemaker. She was confirmed to have COVID-19 infection on 31 May.

- xvii. 3 of the confirmed cases (Cases 63892, 64027 and 64028) are linked to the Case 63892 cluster with the most recent cases (Cases 64027 and 64028) linked to the cluster on 3 June. Case 63892 is a 68 year-old male Singaporean who works as a manager at Phoenix Entertainment Karaoke TV Music Lounge Pte Ltd. He was confirmed to have COVID-19 infection on 30 May.
- xviii. 27 of the confirmed cases (Cases 63507, 63677, 63740, 63760, 63761, 63765, 63798, 63799, 63802, 63830, 63831, 63832, 63836, 63837, 63839, 63842, 63843, 63898, 63905, 63906, 63907, 63929, 63952, 63953, 63970, 64026 and 64032) are linked to the Hong Ye Group cleaners cluster with the most recent cases (Cases 64026 and 64032) linked to the cluster on 3 June. Case 63507 is a 31 year-old male Singaporean who is employed by Hong Ye Group Pte Ltd as a cleaner at Changi Business Park. He was confirmed to have COVID-19 infection on 19 May.
- xix. 13 of the confirmed cases (Cases 63286, 63292, 63392, 63455, 63456, 63517, 63601, 63609, 63757, 63862, 63863, 63864 and 63999) are linked to the 506 Hougang Avenue 8 cluster with the most recent case (Case 63999) linked to the cluster on 1 June. Case 63286 is a 57 year-old female Malaysia national who is currently unemployed. She was confirmed to have COVID-19 infection on 15 May.
- xx. 3 of the confirmed cases (Cases 63973, 63975 and 63978) are linked to the Case 63973 cluster with the most recent cases (Cases 63975 and 63978) linked to the cluster on 2 June. Case 63973 is an 80 year-old female Singaporean who is a retiree. She was confirmed to have COVID-19 infection on 1 June.
- xxi. 7 of the confirmed cases (Cases 63887, 63908, 63920, 63928, 63940, 63947 and 63998) are linked to the Case 63887 cluster with the most recent case (Case 63998) linked to the cluster on 2 June. Case 63887 is a 65 year-old female Singaporean who is a homemaker. She was confirmed to have COVID-19 infection on 30 May.
- xxii. 4 of the confirmed cases (Cases 63941, 63963, 63966 and 64000) are linked to the Case 63941 cluster with the most recent case (Case 64000) linked to the cluster on 2 June. Case 63941 is a 36 year-old female Vietnam national who is a homemaker. She was confirmed to have COVID-19 infection on 1 June.
- xxiii. 10 of the confirmed cases (Cases 63806, 63827, 63847, 63848, 63875, 63876, 63951, 63954, 63955 and 63968) are linked to the Case 63806 cluster with the most recent cases (Cases 63951, 63954 and 63955) linked to the cluster on 1 June, and Case 63968 linked to the cluster on 2 June. Case 63806 is a 49 year-old male Singapore Permanent Resident who works as a manager at Success Consultancy Pte Ltd. He was confirmed to have COVID-19 infection on 28 May.
- xxiv. 7 of the confirmed cases (Cases 63725, 63742, 63775, 63777, 63846, 63881 and 63960) are linked to the Chevy's Bar and Bistro cluster with the most recent case (Case 63960) linked to the cluster on 1 June. Case 63725 is a 58 year-old female Singaporean who works at Chevy's Bar and Bistro. She was confirmed to have COVID-19 infection on 25 May.
- xxv. 3 of the confirmed cases (Cases 63743, 63859 and 63938) are linked to the Case 63743 cluster with the most recent case (Case 63938) linked to the cluster on 1 June. Case 63743 is a 24 year-old male Malaysia national who works at McDonald's (The Woodgrove). He was confirmed to have COVID-19 infection on 26 May.
- xxvi. 7 of the confirmed cases (Case 63660, 63661, 63701, 63702, 63703, 63904 and 63923) are linked to Case 63660 cluster with the most recent case (Case 63923) linked to the

cluster on 31 May. Case 63660 is a 31 year-old male Singaporean who works as a property agent with ERA Realty Network Pte Ltd. He was confirmed to have COVID-19 infection on 23 May.

- xxvii. 3 of the confirmed cases (Cases 63844, 63890 and 63899) are linked to Case 63844 cluster with the most recent cases (Case 63890 and 63899) linked to the cluster on 30 May. Case 63844 is a 49 year-old female Singaporean who works as executive at Eng Soon Chair & Table Hire Service. She was confirmed to have COVID-19 infection on 28 May.
- xxviii. 6 of the confirmed cases (Cases 63708, 63709, 63746, 63756, 63894 and 63895) are linked to the Case 63708 cluster with the most recent cases (Cases 63894 and 63895) linked to the cluster on 30 May. Case 63708 is a 15 year-old male Singaporean who is a student at Westwood Secondary School. He was confirmed to have COVID-19 infection on 24 May.
- xxix. 63 of the confirmed cases (Cases 62933, 63037, 63273, 63275, 63276, 63277, 63304, 63306, 63318, 63357, 63363, 63381, 63393, 63406, 63408, 63417, 63448, 63453, 63462, 63463, 63469, 63470, 63471, 63472, 63488, 63508, 63509, 63510, 63520, 63524, 63559, 63560, 63570, 63571, 63577, 63578, 63588, 63591, 63593, 63597, 63598, 63600, 63606, 63607, 63620, 63652, 63653, 63664, 63665, 63675, 63678, 63704, 63707, 63722, 63724, 63728, 63729, 63733, 63734, 63735, 63829, 63849 and 63882) are linked to the JEM/ Westgate cluster with the most recent case (Case 63882) linked to the cluster on 30 May. Case 62933 is a 53 year-old female Singaporean who works as a cleaner at Park Avenue Rochester. She was confirmed to have COVID-19 infection on 7 May.
- xxx. 5 of the confirmed cases (Cases 63446, 63656, 63773, 63866 and 63867) are linked to the Case 63446 cluster with the most recent cases (Cases 63866 and 63867) linked to the cluster on 29 May. Case 63446 is a 28 year-old male Singaporean who works as an engineer at Patec Pte Ltd. He was confirmed to have COVID-19 infection on 18 May.
- xxxi. 3 of the confirmed cases (Cases 63466, 63618 and 63804) are linked to the Case 63466 cluster with the most recent case (Case 63804) linked to the cluster on 27 May. Case 63466 is a 59 year-old female Singaporean who works at Mary Fashion and Trading. She was confirmed to have COVID-19 infection on 19 May.
- xxxii. 4 of the confirmed cases (Cases 63515, 63612, 63654 and 63741) are linked to the Case 63515 cluster with the most recent case (Case 63741) linked to the cluster on 25 May. Case 63515 is a 34 year-old male Singaporean who works as a technician at Singapore Refining Company Pte Ltd. He was confirmed to have COVID-19 infection on 20 May.
- xxxiii. 5 of the confirmed cases (Case 63622, 63696, 63697, 63698, and 63723) are linked to the Harvest @ Woodlands dormitory cluster with the most recent case (Case 63723) linked to the cluster on 24 May. Case 63622 is a 46 year-old male Malaysia national who works as a construction worker at H&W Communications Pte Ltd. He was confirmed to have COVID-19 infection on 22 May.
- xxxiv. 8 of the confirmed cases (Cases 63236, 63349, 63370, 63421, 63506, 63621, 63641 and 63727) are linked to the Case 63236 cluster, with the most recent case (Case 63727) linked to the cluster on 25 May. Case 63236 is a 53 year-old male Singaporean who works as a personal chauffeur. He was confirmed to have COVID-19 infection on 14 May.
- xxxv. 7 of the confirmed cases (Cases 63317, 63320, 63350, 63439, 63610, 63679 and 63739) are linked to the Marina Bay Sands Casino dealer cluster, with the most recent case (Case 63739) linked to the cluster on 25 May. Case 63317 is a 36 year-old male Malaysia national

who works as a dealer at Marina Bay Sands Casino. He was confirmed to have COVID-19 infection on 16 May.

- xxxvi. 3 of the confirmed cases (Cases 63543, 63551 and 63700) are linked to Case 63543 cluster with the most recent case (Case 63700) linked to the cluster on 24 May. Case 63543 is a 40 year-old male Singaporean who works as an operations personnel at The Meatery SG. He was confirmed to have COVID-19 infection on 21 May.
- xxxvii. 3 of the confirmed cases (Cases 63414, 63584 and 63585) are linked to the Case 63414 cluster with the most recent cases (Cases 63584 and 63585) linked to the cluster on 21 May. Case 63414 is a 40 year-old male Singaporean who works as a vending machine loader at Warburg Pte Ltd, and a food delivery rider for Deliveroo and Grab. He was confirmed to have COVID-19 infection on 18 May.
- xxxviii. 3 of the confirmed cases (Cases 63513, 63516 and 63572) are linked to the Case 63516 cluster with the most recent case (Case 63572) linked to the cluster on 21 May. Case 63516 is a 28 year-old female Singaporean who is a homemaker. She was confirmed to have COVID-19 infection on 20 May.
- xxxix. 3 of the confirmed cases (Cases 63487, 63574 and 63581) are linked to the Case 63487 cluster with the most recent cases (Cases 63574 and 63581) linked to the cluster on 21 May. Case 63487 is a 19 year-old female Malaysia national who is a student at Singapore Polytechnic. She was confirmed to have COVID-19 infection on 19 May.

## Summary of Cases in the Community

	Case Number	Date of Confirmation	Onset date	Age (years)	Gender	Nationality	Exposure	Key Places Visited after Symptoms Onset/ Swab (for asymptomatic cases)	Links/ Cluster
*	64298	17 Jun	Asymptomatic	83	M	SC	Local linked		115 Bukit Merah View Market & Food Centre cluster
*	64299	17 Jun	16 Jun	35	F	China	Local linked		115 Bukit Merah View Market & Food Centre cluster
*	64300	17 Jun	15 Jun	72	M	SC	Local linked		115 Bukit Merah View Market & Food Centre cluster
#	64303	17 Jun	Asymptomatic	5	M	SC	Local linked		115 Bukit Merah View Market & Food Centre cluster
#	64304	17 Jun	Asymptomatic	4	F	SC	Local linked		115 Bukit Merah View Market & Food Centre cluster
#	64305	17 Jun	16 Jun	39	M	SC	Local linked		115 Bukit Merah View Market & Food Centre cluster
*	64307	17 Jun	16 Jun	64	M	SC	Local linked		115 Bukit Merah View Market & Food Centre cluster
*	64308	17 Jun	17 Jun	69	M	China	Local unlinked		
*	64310	17 Jun	17 Jun	67	M	SC	Local unlinked		
*	64311	17 Jun	Asymptomatic	51	F	SC	Local unlinked		
#	64312	17 Jun	16 Jun	59	F	SC	Local linked		Case 64183 cluster
*	64315	18 Jun	16 Jun	42	F	Myanmar	Local linked		115 Bukit Merah View Market & Food Centre cluster

	Case Number	Date of Confirmation	Onset date	Age (years)	Gender	Nationality	Exposure	Key Places Visited after Symptoms Onset/ Swab (for asymptomatic cases)	Links/ Cluster
#	64316	18 Jun	14 Jun	69	M	SC	Local linked		115 Bukit Merah View Market & Food Centre cluster
*	64318	18 Jun	15 Jun	83	F	SC	Local unlinked		

Cases marked (#) had already been quarantined earlier.

Cases marked (\*) were detected as a result of our proactive screening and surveillance.

## Summary of Imported Cases

	Case Number	Date of Confirmation	Onset date	Age (years)	Gender	Nationality	Travel History	Exposure	Links	Cluster
~	64302	17 Jun (Serology Positive)	16 Jun	31	M	SC	Indonesia	Imported		
~	64306	17 Jun	17 Jun	21	F	SC	Indonesia	Imported		

Cases marked (~) had already been placed on Stay-Home Notice or isolated upon arrival in Singapore.

Public Places Visited by Cases in the Community during Infectious Period<sup>14</sup>

Date	Time	Location (Address)
4 to 7 Jun	0600h to 1900h	ION Orchard (2 Orchard Turn)
4 to 6 Jun	0645h to 1700h	Takashimaya (391A Orchard Road) <ul style="list-style-type: none"> <li>• St. Leaven</li> </ul>
4 to 12 Jun	0830h to 1430h	115 Bukit Merah View Market & Hawker Centre (115 Bukit Merah View)
4 Jun	1230h to 2030h	ION Orchard (2 Orchard Turn) <ul style="list-style-type: none"> <li>• Guardian</li> </ul>
4 Jun	1300h to 2130h	ION Orchard (2 Orchard Turn) <ul style="list-style-type: none"> <li>• Four Leaves</li> </ul>
5 Jun	0900h to 2130h	ION Orchard (2 Orchard Turn) <ul style="list-style-type: none"> <li>• Four Leaves</li> </ul>
5 Jun	1000h to 1045h	Divine Beauty (303 Woodlands Street 31)
5 Jun	1230h to 2030h	ION Orchard (2 Orchard Turn) <ul style="list-style-type: none"> <li>• Guardian</li> </ul>
5 Jun	1550h to 1625h	NTUC FairPrice (849 Yishun Ring Road)
6 to 9 Jun	0600h to 1400h	115 Bukit Merah View Market & Hawker Centre (115 Bukit Merah View)
6 Jun	0930h to 1430h	115 Bukit Merah View Market & Hawker Centre (115 Bukit Merah View)
6 Jun	1000h to 1100h	The Centrepont (176 Orchard Road) <ul style="list-style-type: none"> <li>• Decathlon</li> </ul>
6 Jun	1100h to 1145h	Orchard Central (181 Orchard Road) <ul style="list-style-type: none"> <li>• UNIQLO</li> </ul>
6 Jun	1230h to 2030h	ION Orchard (2 Orchard Turn) <ul style="list-style-type: none"> <li>• Guardian</li> </ul>
6 Jun	1240h to 1345h	ION Orchard (2 Orchard Turn)
6 Jun	1300h to 2130h	ION Orchard (2 Orchard Turn) <ul style="list-style-type: none"> <li>• Four Leaves</li> </ul>
6 Jun	1555h to 1700h	Shona Thai Foot Massage (8 Telok Blangah Crescent)
6 Jun	1700h to 1945h	115 Bukit Merah View Market & Hawker Centre (115 Bukit Merah View)
6 Jun	1955h to 2045h	Queenstown Community Centre (365 Commonwealth Avenue)
7 Jun	0630h to 1110h	Tiong Bahru Yong Tao Hu (56 Eng Hoon Street)

<sup>14</sup> Excludes residence, workplaces, healthcare facilities and public transport. This list will be updated on a rolling 14-days basis, i.e. one incubation period, and as epidemiological investigations progress.



Date	Time	Location (Address)
7 Jun	0900h to 1000h	115 Bukit Merah View Market & Hawker Centre (115 Bukit Merah View)
7 Jun	1120h to 1200h	Tiong Bahru Plaza (298 Tiong Bahru Road)
7 Jun	1220h to 1300h	ION Orchard (2 Orchard Turn)
7 Jun	1230h to 2030h	ION Orchard (2 Orchard Turn) <ul style="list-style-type: none"> <li>Guardian</li> </ul>
7 Jun	1300h to 1505h	Ngee Ann City (391A Orchard Road) <ul style="list-style-type: none"> <li>Takashimaya Shopping Centre</li> </ul>
8 Jun	0630h to 1025h	Tiong Bahru Yong Tao Hu (56 Eng Hoon Street)
8 to 10 Jun	0730h to 0815h	Redhill Market (79 Redhill Lane)
8 Jun	0820h to 0900h	Tiong Bahru Market and Food Centre (30 Seng Poh Road)
8 Jun	0920h to 1500h	115 Bukit Merah View Market & Hawker Centre (115 Bukit Merah View)
8 Jun	1000h to 1200h	POSB Tiong Bahru Branch (302 Tiong Bahru Road)
8 Jun	1025h to 1100h	NTUC FairPrice (50 Havelock Road)
8 Jun	1035h to 1145h	Tiong Bahru Plaza (298 Tiong Bahru Road)
8 Jun	1100h to 1345h	The One Hairstyling Studio (123 Lorong 1 Toa Payoh)
8 Jun	1325h to 1425h	ION Orchard (2 Orchard Turn)
8 Jun	1505h to 1555h	Excelsior Shopping Centre (5 Coleman Street)
8 Jun	2015h to 2045h	Ang Mo Kio MRT Station (2450 Ang Mo Kio Avenue 8)
9 to 11 Jun	0500h to 1800h	115 Bukit Merah View Market & Hawker Centre (115 Bukit Merah View)
9 to 10 Jun	0600h to 1900h	ION Orchard (2 Orchard Turn)
9 to 11 Jun	0600h to 1500h	115 Bukit Merah View Market & Hawker Centre (115 Bukit Merah View)
9 Jun	0630h to 1100h	Tiong Bahru Yong Tao Hu (56 Eng Hoon Street)
9 Jun	0800h to 1500h	115 Bukit Merah View Market & Hawker Centre (115 Bukit Merah View)
9 Jun	1000h to 1100h	NTUC Health Senior Activity Centre (SilverACE) – Henderson (117 Bukit Merah View)
9 Jun	1230h to 2030h	ION Orchard (2 Orchard Turn) <ul style="list-style-type: none"> <li>Guardian</li> </ul>
9 Jun	1510h to 1550h	Tiong Bahru Plaza (298 Tiong Bahru Road) <ul style="list-style-type: none"> <li>FairPrice Finest</li> </ul>
10 to 11 Jun	0800h to 1400h	115 Bukit Merah View Market & Hawker Centre (115 Bukit Merah View)

<b>Date</b>	<b>Time</b>	<b>Location (Address)</b>
10 Jun	0930h to 1430h	115 Bukit Merah View Market & Hawker Centre (115 Bukit Merah View)
10 Jun	1000h to 1930h	Telok Blangah Food Centre (79 Telok Blangah Drive) <ul style="list-style-type: none"> <li>• Al-barakah Food Corner</li> </ul>
10 Jun	1100h to 1130h	115 Bukit Merah View Market & Hawker Centre (115 Bukit Merah View)
10 Jun	1205h to 1310h	Renee Hair Salon (756 Upper Serangoon Road)
10 Jun	1455h to 1730h	Fu Lu Shou Complex (149 Rochor Road)
10 Jun	1700h to 2100h	115 Bukit Merah View Market & Hawker Centre (115 Bukit Merah View)
11 Jun	0600h to 0900h	ION Orchard (2 Orchard Turn)
11 Jun	0630h to 1230h	Tiong Bahru Yong Tao Hu (56 Eng Hoon Street)
11 Jun	0930h to 1430h	115 Bukit Merah View Market & Hawker Centre (115 Bukit Merah View)
11 Jun	1000h to 1930h	Telok Blangah Food Centre (79 Telok Blangah Drive) <ul style="list-style-type: none"> <li>• Al-barakah Food Corner</li> </ul>
11 Jun	1030h to 1900h	ION Orchard (2 Orchard Turn)
11 Jun	1100h to 1130h	115 Bukit Merah View Market & Hawker Centre (115 Bukit Merah View)
11 Jun	1105h to 1140h	Chinatown Complex (335 Smith Street) <ul style="list-style-type: none"> <li>• Wet market</li> </ul>
11 Jun	1140h to 1215h	Chinatown Complex (336 Smith Street) <ul style="list-style-type: none"> <li>• myCK – Chinatown</li> </ul>
11 Jun	1230h to 1335h	NTUC FairPrice (166 Bukit Merah Central)
11 Jun	1235h to 1335h	NTUC FairPrice (166 Bukit Merah Central)
11 Jun	1610h to 1645h	The Clementi Mall (3155 Commonwealth Avenue West)
11 Jun	1700h to 2100h	115 Bukit Merah View Market & Hawker Centre (115 Bukit Merah View)
12 Jun	0500h to 0530h	115 Bukit Merah View Market & Hawker Centre (115 Bukit Merah View)
12 Jun	0630h to 1115h	Tiong Bahru Yong Tao Hu (56 Eng Hoon Street)
12 Jun	0630h to 1700h	Tiong Bahru Yong Tao Hu (56 Eng Hoon Street)
12 Jun	0915h to 0945h	Kim San Leng Coffee Shop (116 Bukit Merah View)
12 Jun	0930h to 1430h	115 Bukit Merah View Market & Hawker Centre (115 Bukit Merah View)
12 Jun	1000h to 1930h	Telok Blangah Food Centre (79 Telok Blangah Drive) <ul style="list-style-type: none"> <li>• Al-barakah Food Corner</li> </ul>
12 Jun	1005h to 1035h	NTUC FairPrice (166 Bukit Merah Central)

Date	Time	Location (Address)
12 Jun	1100h to 1130h	115 Bukit Merah View Market & Hawker Centre (115 Bukit Merah View)
12 Jun	1535h to 1610h	Sheng Siong Supermarket (88 Tanglin Halt Road)
12 Jun	1535h to 1630h	Greet Effect Aquarium (801 French Road)
12 Jun	1900h to 1940h	VivoCity (1 Harbourfront Walk) <ul style="list-style-type: none"> <li>• Swarovski</li> </ul>
12 Jun	1900h to 1945h	VivoCity (1 Harbourfront Walk)
12 Jun	2040h to 2230h	Night Safari (80 Mandai Lake Road)
13 Jun	0630h to 1150h	Tiong Bahru Yong Tao Hu (56 Eng Hoon Street)
13 Jun	0630h to 1700h	Tiong Bahru Yong Tao Hu (56 Eng Hoon Street)
13 Jun	1020h to 1115h	NTUC FairPrice (166 Bukit Merah Central)
13 Jun	1110h to 1315h	Junction 10 (1 Woodlands Road) <ul style="list-style-type: none"> <li>• Sheng Siong Supermarket</li> </ul>
13 Jun	1150h to 1220h	Giant Express (86 Redhill Close)
13 Jun	1200h to 1540h	Katong Shopping Centre (865 Mountbatten Road)
13 Jun	1310h to 1520h	VivoCity (1 Harbourfront Walk) <ul style="list-style-type: none"> <li>• Toys “R” Us</li> </ul>
13 Jun	1315h to 1405h	The Clementi Mall (3155 Commonwealth Avenue West) <ul style="list-style-type: none"> <li>• Clementi Public Library</li> </ul>
13 Jun	1500h to 1530h	115 Bukit Merah View Market & Hawker Centre (115 Bukit Merah View)
13 Jun	1530h to 1630h	Katong V Mall (30 East Coast Road) <ul style="list-style-type: none"> <li>• NTUC FairPrice</li> </ul>
14 Jun	0630h to 1600h	Tiong Bahru Yong Tao Hu (56 Eng Hoon Street)
14 Jun	1130h to 1205h	Teoh Hock Seng (129 Kim Tian Road)
14 Jun	1200h to 2100h	Bake King (10 Haig Road)

Those who had been identified as close contacts of confirmed cases would already have been notified by MOH.

As a precautionary measure, persons who had been at these locations during the specified timings should monitor their health closely for 14 days from their date of visit. They should see a doctor promptly if they develop symptoms of acute respiratory infection (such as cough, sore throat and runny nose), as well as fever and loss of taste or smell, and inform the doctor of their exposure history.

Individuals may access the SafeEntry Location Matching Self-Check service via the TraceTogether App or at <https://wereyouthere.safeentry.gov.sg> to check whether they were at these locations during the specified timings, based on their own SafeEntry records.

There is no need to avoid places where confirmed cases of COVID-19 have been. The National Environment Agency will engage the management of affected premises to provide guidance on cleaning and disinfection.