



FOR IMMEDIATE RELEASE

UPDATE ON LOCAL COVID-19 SITUATION

Summary of local situation

- 1,520 cases are currently warded in hospital. 255 cases require oxygen supplementation and 37 are in the intensive care unit (ICU).
- Over the last 28 days, of the 43,610 infected individuals, 98.3% had no or mild symptoms, 1.4% required oxygen supplementation, 0.1% required ICU care, and 0.2% has died.
- As of 5 October 2021, 83% of our population has completed their full regimen/ received two doses of COVID-19 vaccines, and 85% has received at least one dose.
- As of 6 October 2021, 12pm, the Ministry of Health has detected a total of 3,577 new cases of COVID-19 infection in Singapore, with 2,932 in the community, 630 in the migrant worker dormitories and 15 imported cases.

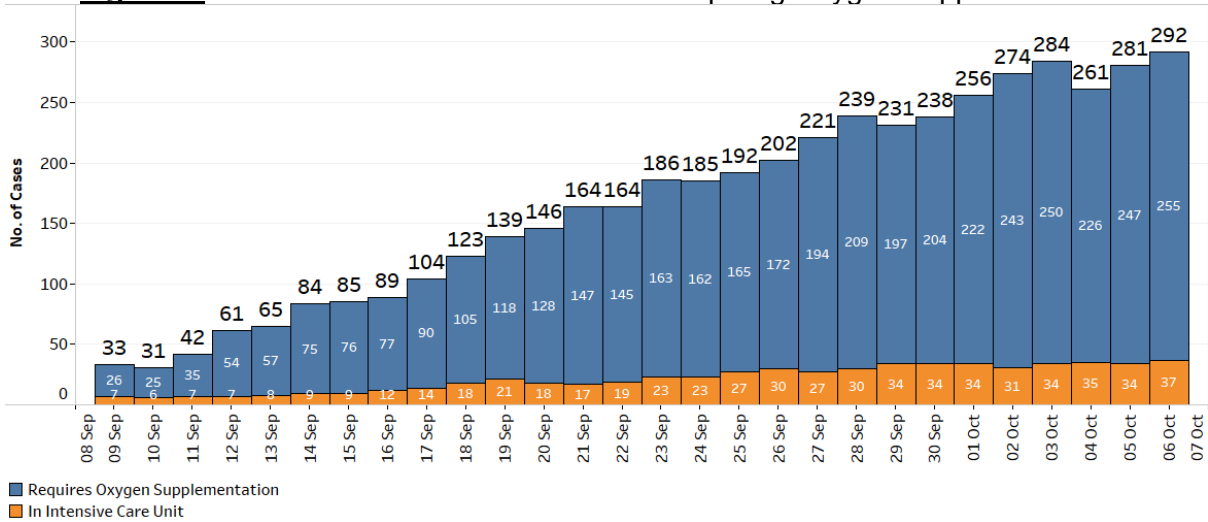
Condition of hospitalised cases

As of 6 October 2021, 12pm, 1,520 COVID-19 cases are currently warded in hospital. Most are well and under observation. There are currently 255 cases requiring oxygen supplementation, and 37 in the ICU. Of those who have fallen very ill, 239 are seniors above 60 years.

2. 3 more cases have passed away from complications due to COVID-19 infection.¹ They were female Singaporeans, aged between 68 and 102 years. All of them had been unvaccinated against COVID-19, and had various underlying medical conditions. In total, 133 have passed away from complications due to COVID-19 infection.

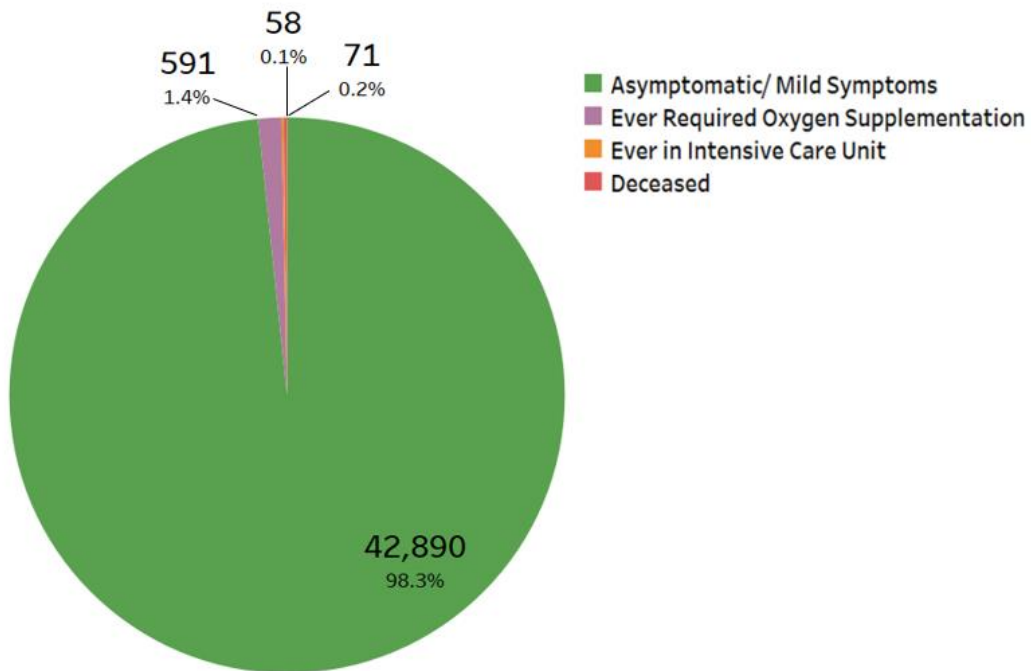
¹ Cases 92731, 92734 and 88696.

Figure 1: Number of Active Cases in ICU or Requiring Oxygen Supplementation²



3. Over the last 28 days, the percentage of local cases who were asymptomatic or had mild symptoms is 98.3%. 591 cases required oxygen supplementation and 58 had been in the ICU. Of these, 50.5% were fully vaccinated and 49.5% were unvaccinated/ partially vaccinated. 71 have died, of whom 31.0% were fully vaccinated and 69.0% were unvaccinated/ partially vaccinated.

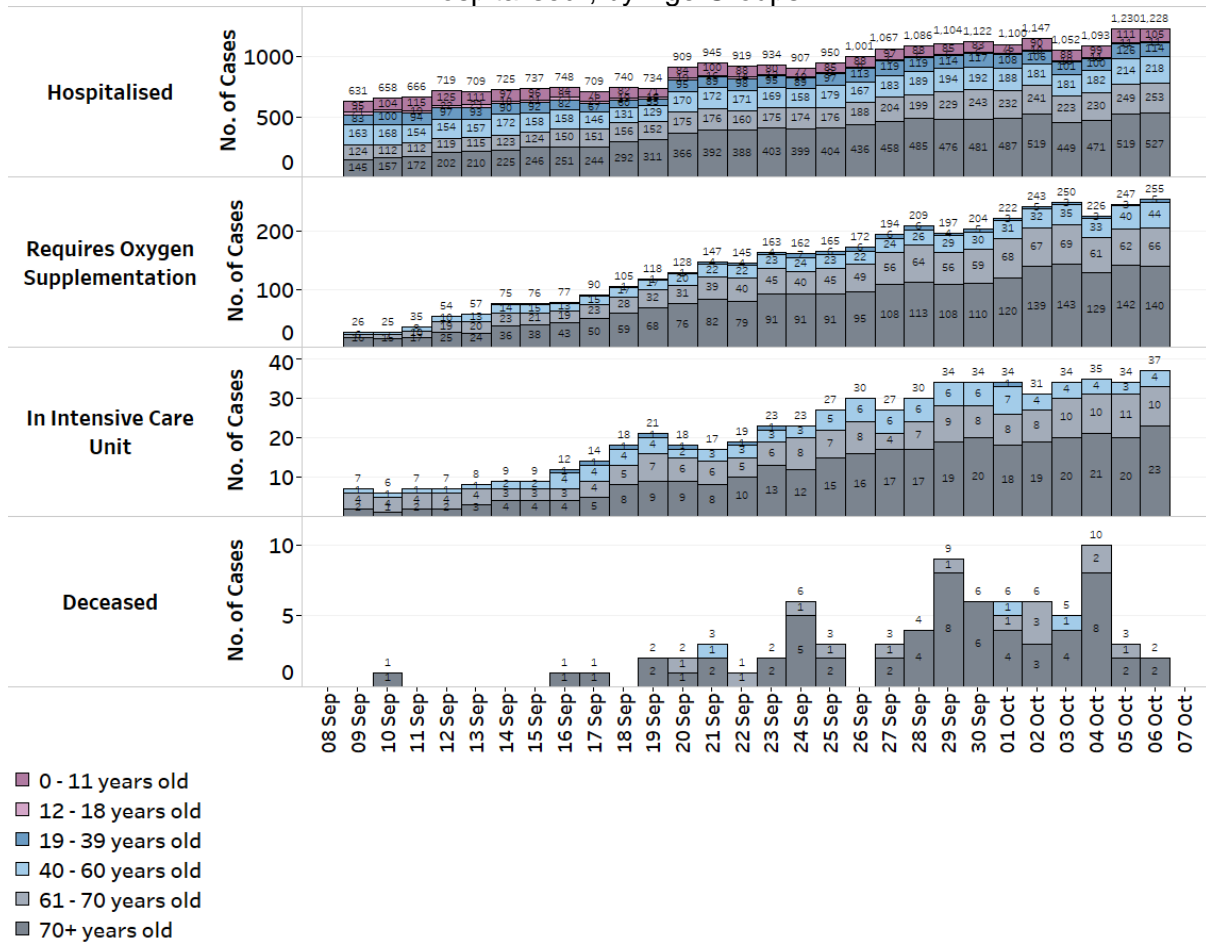
Figure 2: Local Cases in the Last 28 Days by Severity of Condition³



² Includes all cases who are currently hospitalised.

³ Includes only new cases reported in the past 28 days.

Figure 3: Deaths and Active Cases in ICU, Requiring Oxygen Supplementation or Hospitalised², by Age Groups



Update on vaccination progress

4. As of 5 October 2021, 83% of our population has completed their full regimen/ received two doses of COVID-19 vaccines, and 85% has received at least one dose.

5. We have administered a total of 9,335,067 doses of COVID-19 vaccines under the national vaccination programme (Pfizer-BioNTech Comirnaty and Moderna). In total, 4,595,196 individuals have received at least one dose of vaccine under the national vaccination programme, and 4,529,653 individuals having completed the full vaccination regimen. To date, we have invited about 600,000 eligible individuals to receive their booster doses. 341,427 individuals have received their booster shots and another 99,000 have booked their appointments. In addition, 205,430 doses of other vaccines recognised in the World Health Organization’s Emergency Use Listing (WHO EUL) have been administered, covering 107,523 individuals.

Locally transmitted COVID-19 cases

6. As of 6 October 2021, 12pm, the Ministry of Health has detected a total of 3,577 new cases of COVID-19 infection in Singapore, comprising 2,932 community cases, 630 dormitory residents cases and 15 imported cases.

a) Active clusters under close monitoring

7. We are closely monitoring the clusters listed below, which have already been ringfenced through tracing, testing and isolation.

Figure 4: Large Clusters with New Cases

Cluster	New Cases	Total ⁴	Remarks
Learning Vision @ Changi Airport	1	14	Transmission amongst staff and students. Of the 14 cases, 2 are staff and 12 are students. New case has already been quarantined.
MWS Christalite Methodist Home	23	76	Transmission amongst staff and residents. Of the 76 cases, 3 are staff and 73 are residents. New cases have already been quarantined.
Man Fatt Lam Elderly Joy Daycare Centre	1	24	Transmission amongst clients and staff. Of the 24 cases, 18 are clients, 1 is a staff, and 4 are household members of cases. New case has already been quarantined.
ASPRI-Westlite Papan Dormitory	29	196	Intra-dormitory transmission amongst residents with no evidence of spread beyond dormitory. New cases have already been quarantined.
Tampines Dormitory	7	181	Intra-dormitory transmission amongst residents with no evidence of spread beyond dormitory. New cases have already been quarantined.
Jurong Penjuru Dormitory 1	5	54	Intra-dormitory transmission amongst residents with no evidence of spread beyond dormitory. New cases have already been quarantined.
9 Defu South Street 1 Dormitory	21	263	Intra-dormitory transmission amongst residents with no evidence of spread beyond dormitory. New cases have already been quarantined.
Pasir Panjang Wholesale Centre	1	317	Transmission amongst workers and trade visitors. Of the 317 cases, 295 are workers at the market, 4 are trade visitors and 18 are household members of cases. New case has already been quarantined.

b) Summary of trends for local cases

8. There are 3562 new cases of locally transmitted COVID-19 infection in Singapore, with 2,932 in the community and 630 in the migrant worker dormitories.

⁴ Includes new cases added today.

Amongst the local cases today are 664 seniors who are above 60 years.

Figure 5: Number of Community Cases by Age

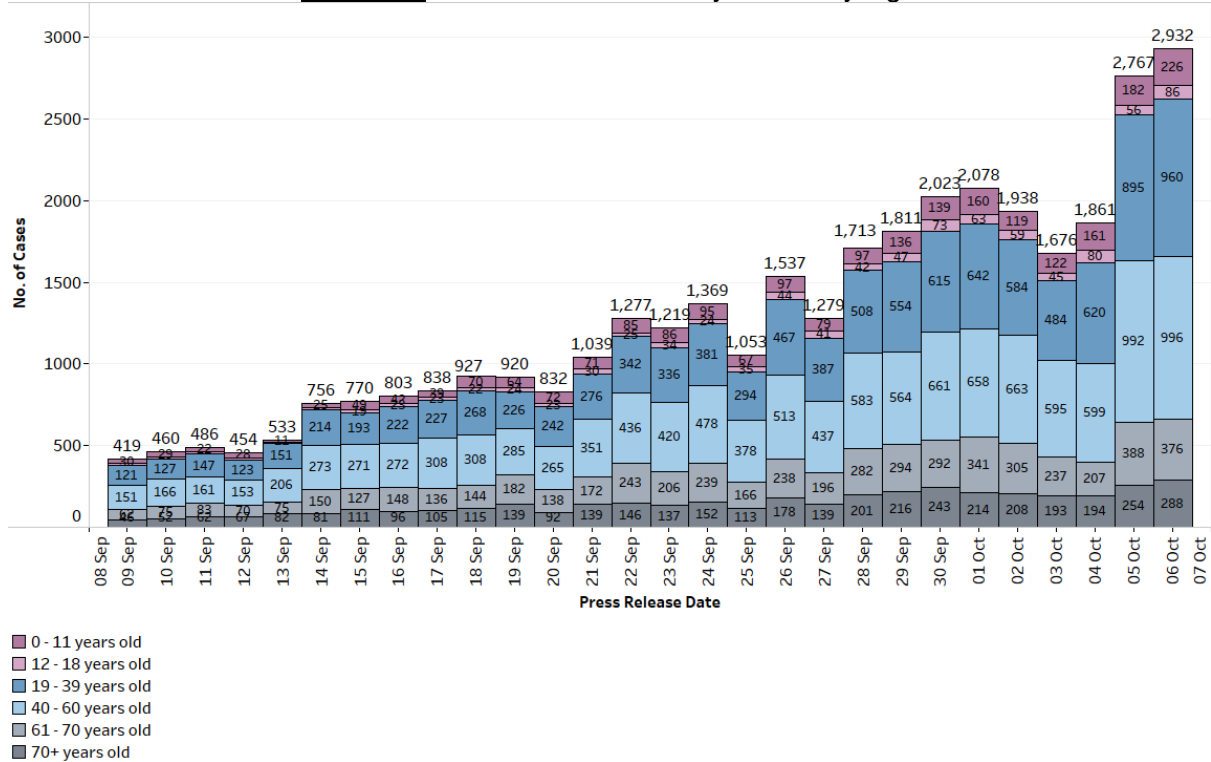
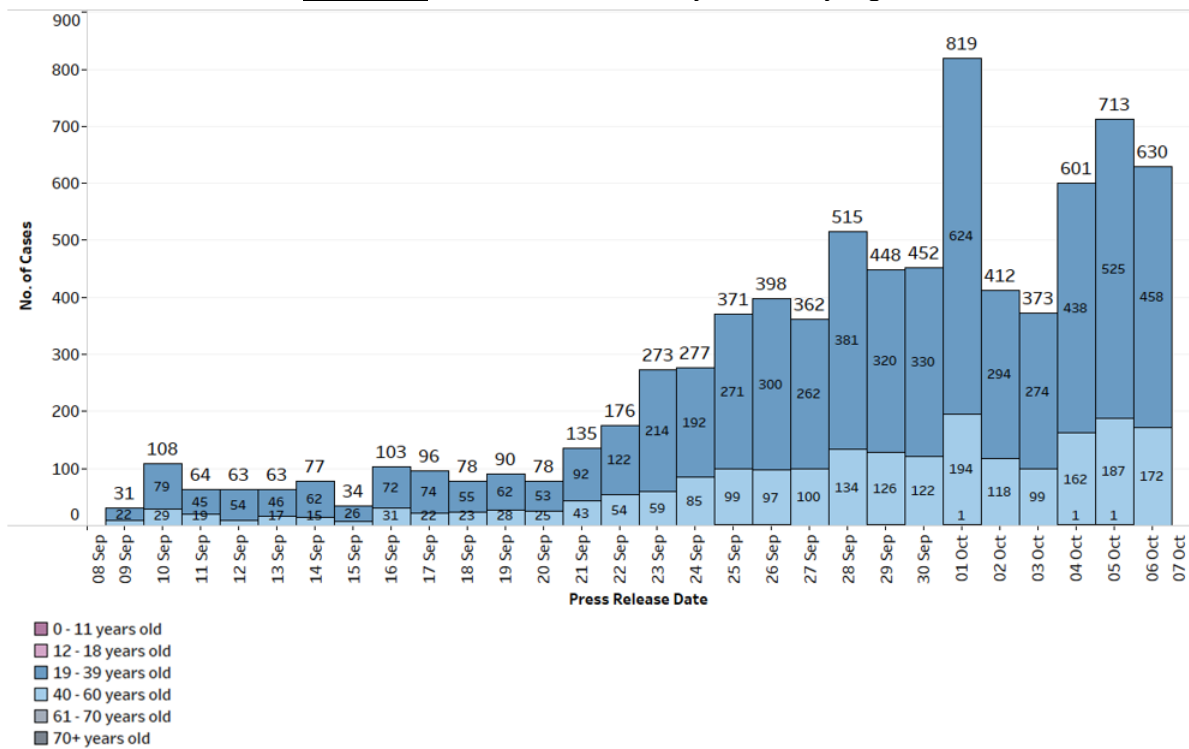


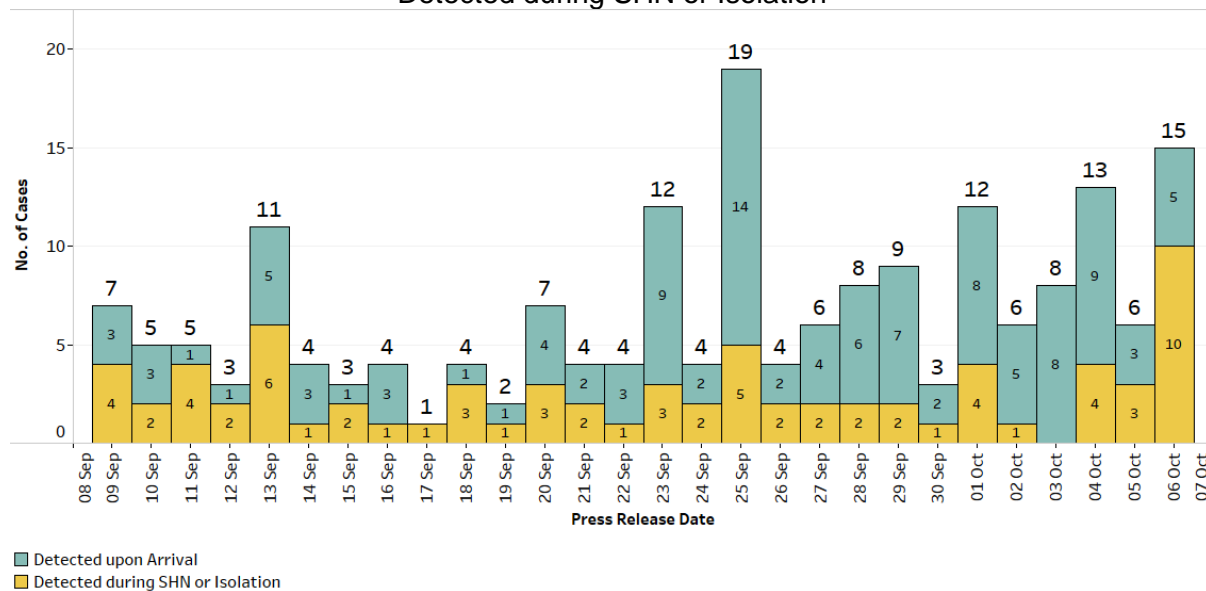
Figure 6: Number of Dormitory Cases by Age



Summary of trends for imported cases

9. There are a total of 15 imported cases, who have already been placed on Stay-Home Notice (SHN) or isolated upon arrival in Singapore. Of these, 5 were detected upon arrival in Singapore, while 10 developed the illness during SHN or isolation.

Figure 7: Number of Imported Cases by Detected Upon Arrival/
Detected during SHN or Isolation



10. Please refer to MOH's daily Situation Report (www.moh.gov.sg/covid-19/situation-report) for details.

MINISTRY OF HEALTH
6 OCTOBER 2021