



FOR IMMEDIATE RELEASE

UPDATE ON LOCAL COVID-19 SITUATION

Summary of local situation

- 1,564 cases are currently warded in hospital. 307 cases require oxygen supplementation and 41 are in the intensive care unit (ICU).
- Over the last 28 days, of the 49,658 infected individuals, 98.4% had no or mild symptoms, 1.3% required oxygen supplementation, 0.1% required ICU care, and 0.2% has died.
- As of 7 October 2021, 83% of our population has completed their full regimen/ received two doses of COVID-19 vaccines, and 85% has received at least one dose.
- As of 8 October 2021, 12pm, the Ministry of Health has detected a total of 3,590 new cases of COVID-19 infection in Singapore, with 2,825 in the community, and 765 in the migrant worker dormitories. There are no imported cases.

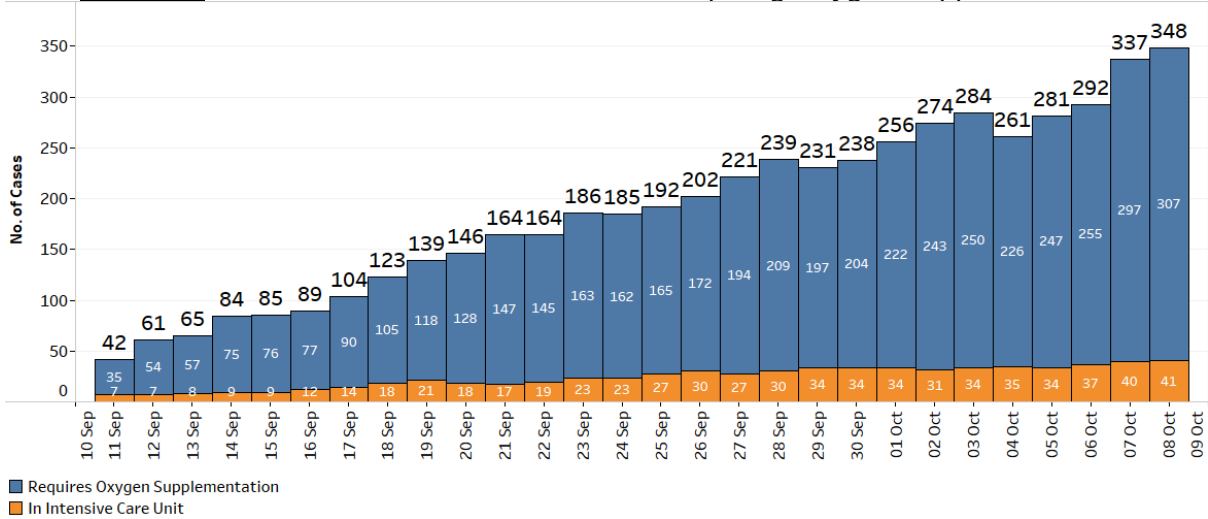
Condition of hospitalised cases

As of 8 October 2021, 12pm, 1,564 COVID-19 cases are currently warded in hospital. Most are well and under observation. There are currently 307 cases requiring oxygen supplementation, and 41 in the ICU. Of those who have fallen very ill, 294 are seniors above 60 years.

2. 6 more cases have passed away from complications due to COVID-19 infection.¹ Of these, 3 were male Singaporeans and 3 were female Singaporeans, aged between 67 and 93 years. Amongst them, 2 had been unvaccinated against COVID-19, 3 had been partially vaccinated and 1 had been vaccinated. 5 of them had various underlying medical conditions, while a partially vaccinated case had no known medical conditions. In total, 142 have passed away from complications due to COVID-19 infection.

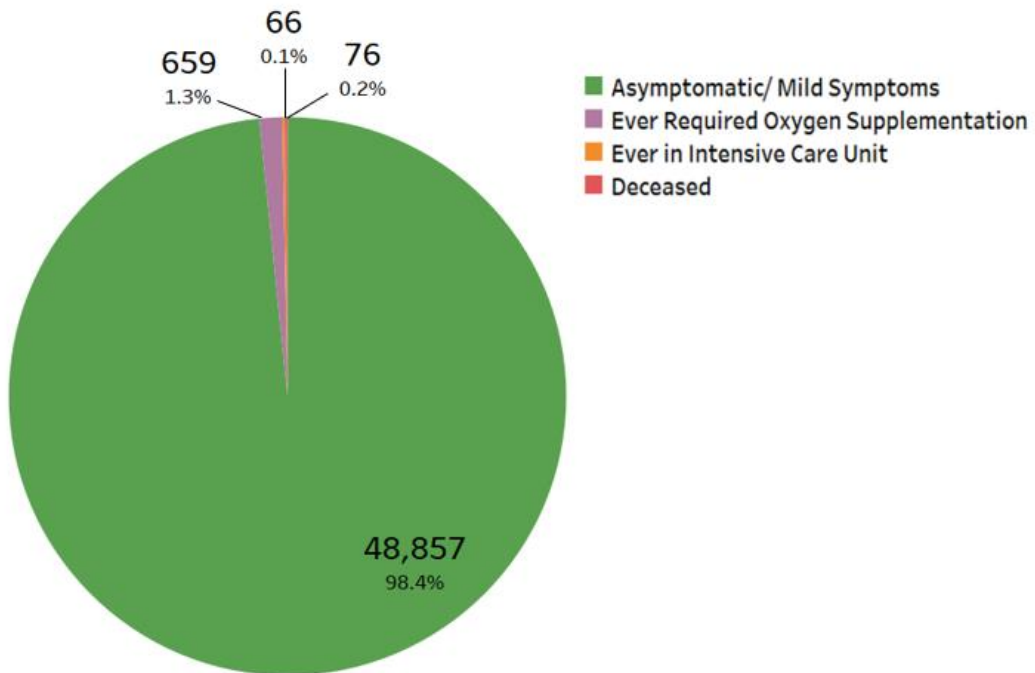
¹ Cases 83277, 97094, 101441, 105226, 105489 and 110247.

Figure 1: Number of Active Cases in ICU or Requiring Oxygen Supplementation²



3. Over the last 28 days, the percentage of local cases who were asymptomatic or had mild symptoms is 98.4%. 659 cases required oxygen supplementation and 66 had been in the ICU. Of these, 49.7% were fully vaccinated and 50.3% were unvaccinated/ partially vaccinated. 76 have died, of whom 31.6% were fully vaccinated and 68.4% were unvaccinated/ partially vaccinated.

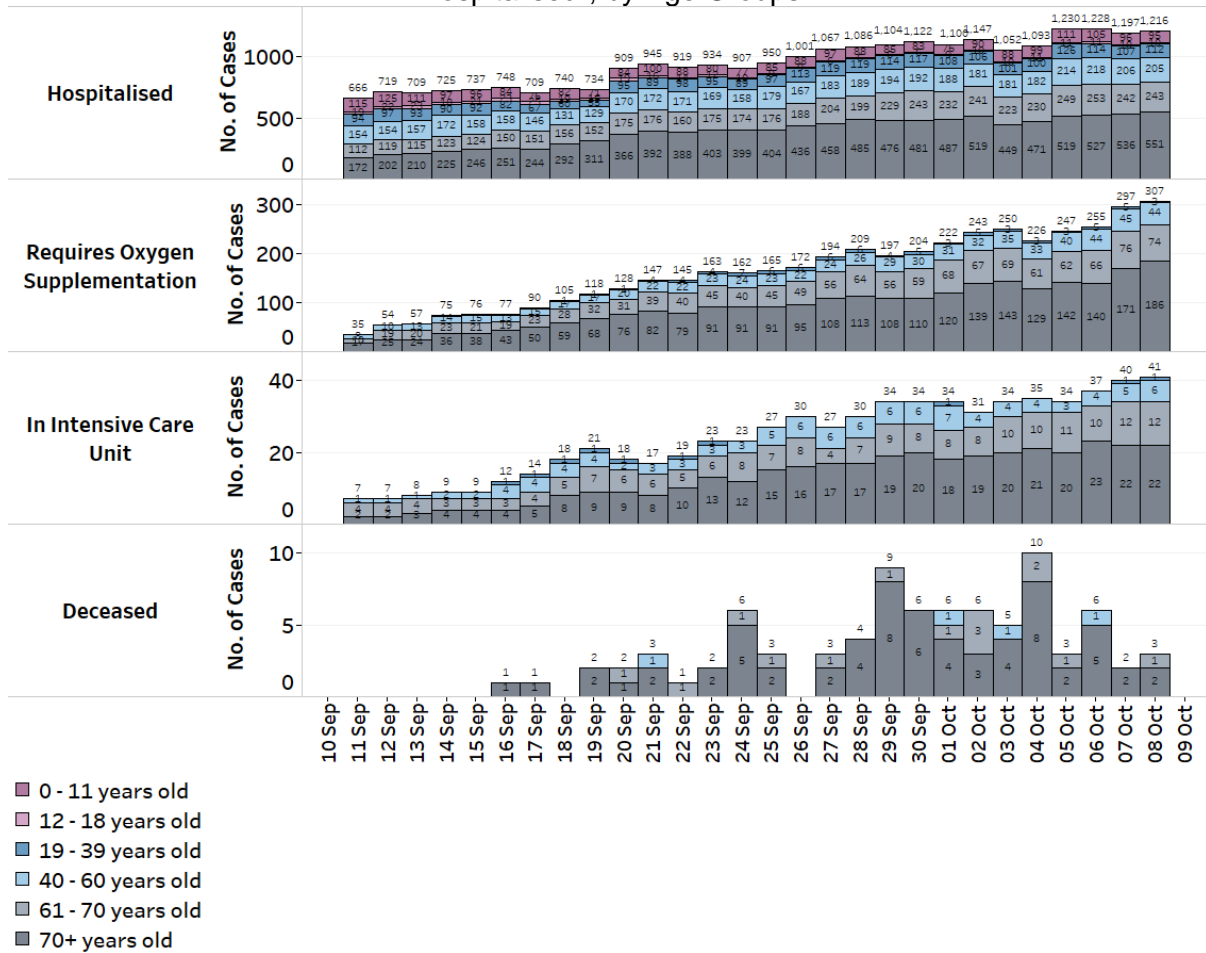
Figure 2: Local Cases in the Last 28 Days by Severity of Condition³



² Includes all cases who are currently hospitalised.

³ Includes only new cases reported in the past 28 days. Based on cases' worst-ever condition; deceased cases previously in ICU are counted under 'Deceased' and not under 'Ever in Intensive Care Unit'.

Figure 3: Deaths and Active Cases in ICU, Requiring Oxygen Supplementation or Hospitalised², by Age Groups



Update on vaccination progress

4. As of 7 October 2021, 83% of our population has completed their full regimen/ received two doses of COVID-19 vaccines, and 85% has received at least one dose.

5. We have administered a total of 9,374,827 doses of COVID-19 vaccines under the national vaccination programme (Pfizer-BioNTech Comirnaty and Moderna). In total, 4,597,008 individuals have received at least one dose of vaccine under the national vaccination programme, and 4,534,827 individuals having completed the full vaccination regimen. To date, we have invited about 600,000 eligible individuals to receive their booster doses. 371,953 individuals have received their booster shots and another 86,000 have booked their appointments. In addition, 208,934 doses of other vaccines recognised in the World Health Organization’s Emergency Use Listing (WHO EUL) have been administered, covering 110,169 individuals.

Locally transmitted COVID-19 cases

6. As of 8 October 2021, 12pm, the Ministry of Health has detected a total of 3,590 new cases of COVID-19 infection in Singapore, comprising 2,825 community cases, and 765 dormitory residents cases. There are no imported cases.

a) Active clusters under close monitoring

7. We are closely monitoring the clusters listed below, which have already been ringfenced through tracing, testing and isolation.

Figure 4: Large Clusters with New Cases

Cluster	New Cases	Total ⁴	Remarks
Pasir Panjang Wholesale Centre	4	334	Transmission amongst workers and trade visitors. Of the 334 cases, 307 are workers at the market, 4 are trade visitors and 23 are household members of cases. New cases have already been quarantined.
MWS Christalite Methodist Home	13	89	Transmission amongst staff and residents. Of the 89 cases, 5 are staff and 84 are residents. New cases have already been quarantined.
Learning Vision @ Changi Airport	1	15	Transmission amongst staff and students. Of the 15 cases, 2 are staff and 13 are students. New case has already been quarantined.
ASPRI-Westlite Papan Dormitory	32	229	Intra-dormitory transmission amongst residents with no evidence of spread beyond dormitory. New cases have already been quarantined.
PPT Lodge 1B Dormitory	12	138	Intra-dormitory transmission amongst residents with no evidence of spread beyond dormitory. New cases have already been quarantined.

b) Summary of trends for local cases

8. There are 3,590 new cases of locally transmitted COVID-19 infection in Singapore, with 2,825 in the community and 765 in the migrant worker dormitories. Amongst the local cases today are 619 seniors who are above 60 years.

⁴ Includes new cases added today.

Figure 5: Number of Community Cases by Age

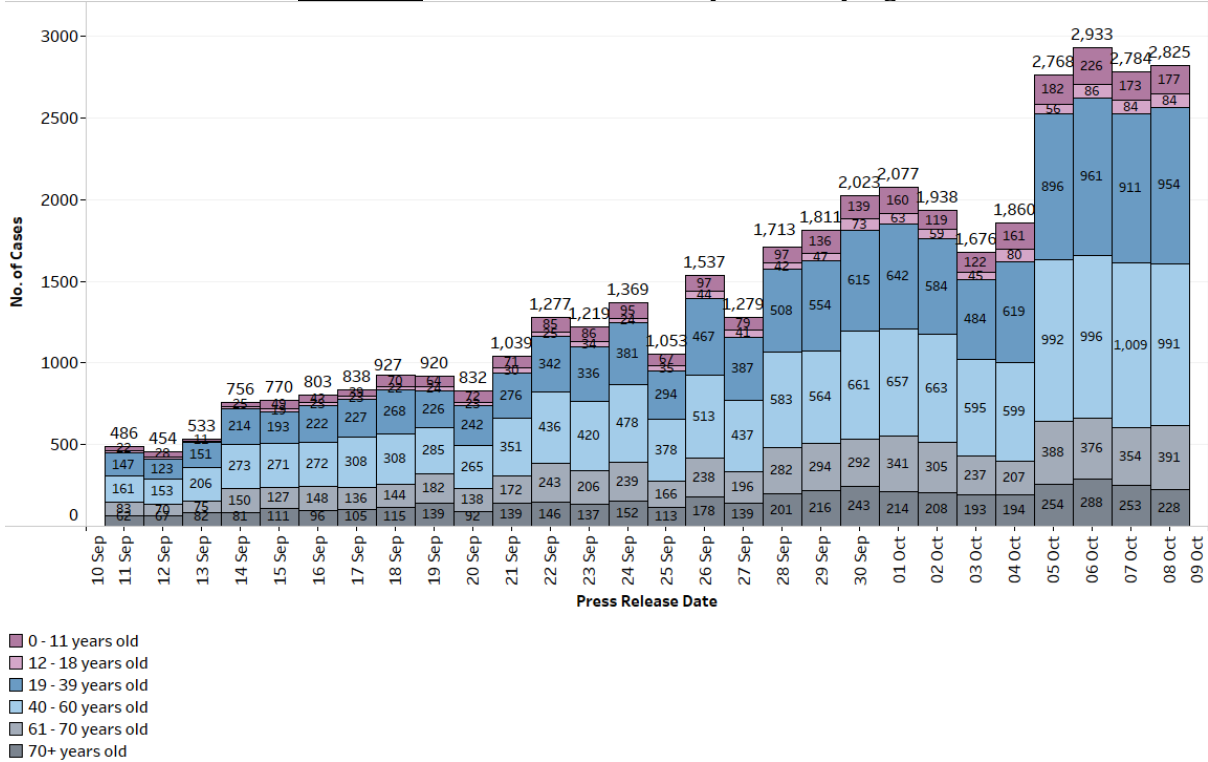
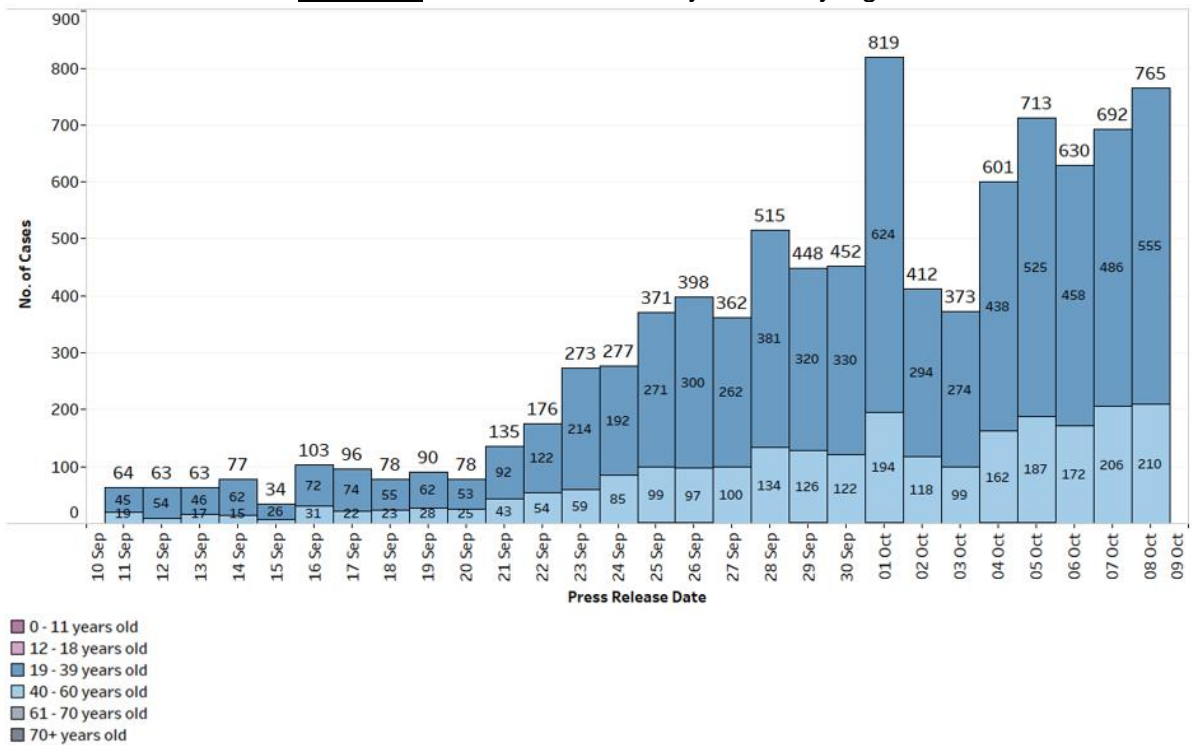


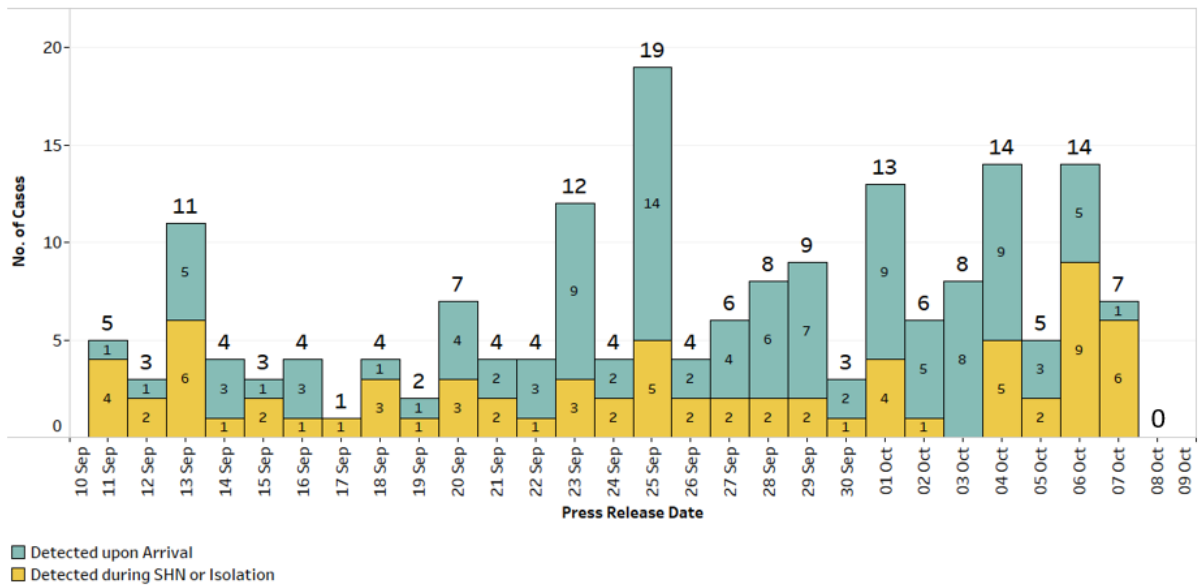
Figure 6: Number of Dormitory Cases by Age



Summary of trends for imported cases

9. There are no imported cases today.

Figure 7: Number of Imported Cases by Detected Upon Arrival/
Detected during SHN or Isolation



10. Please refer to MOH's daily Situation Report (www.moh.gov.sg/covid-19/situation-report) for details.

MINISTRY OF HEALTH
8 OCTOBER 2021