



**FOR IMMEDIATE RELEASE**

## **UPDATE ON LOCAL COVID-19 SITUATION**

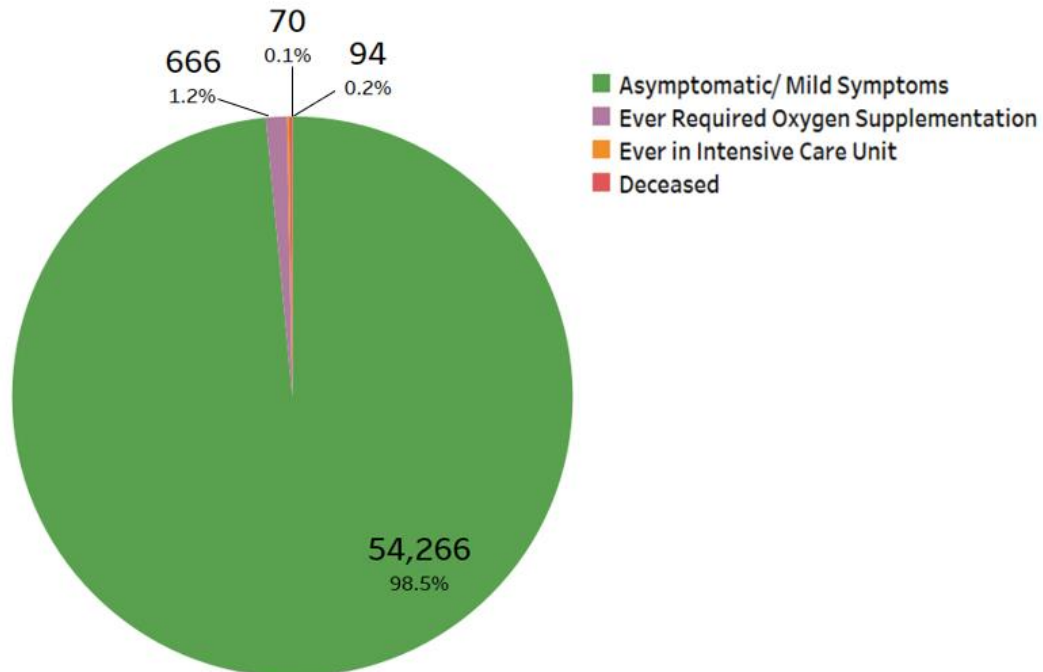
### **Summary of local situation**

- 1,613 cases are currently warded in hospital. 292 cases require oxygen supplementation and 41 are in the intensive care unit (ICU).
- Over the last 28 days, of the 55,096 infected individuals, 98.5% had no or mild symptoms, 1.2% required oxygen supplementation, 0.1% required ICU care, and 0.2% has died.
- As of 9 October 2021, 83% of our population has completed their full regimen/ received two doses of COVID-19 vaccines, and 85% has received at least one dose.
- As of 10 October 2021, 12pm, the Ministry of Health has detected a total of 2,809 new cases of COVID-19 infection in Singapore, with 2,176 in the community, 631 in the migrant worker dormitories and 2 imported cases. The fall in the number of cases today is likely due to fewer swabs being done over the weekend at Public Health Preparedness Clinics (PHPCs) and polyclinics, and is not indicative that the epidemic curve is bending.

## Situation update

1. Over the last 28 days, 98.5% of local infected cases were asymptomatic or had mild symptoms, 1.2% required oxygen supplementation, and 0.1% had been in the ICU. Amongst those who required oxygen supplementation and ICU, 48.8% were fully vaccinated and 51.2% were unvaccinated/ partially vaccinated.

**Figure 1:** Local Cases in the Last 28 Days by Severity of Condition<sup>1</sup>

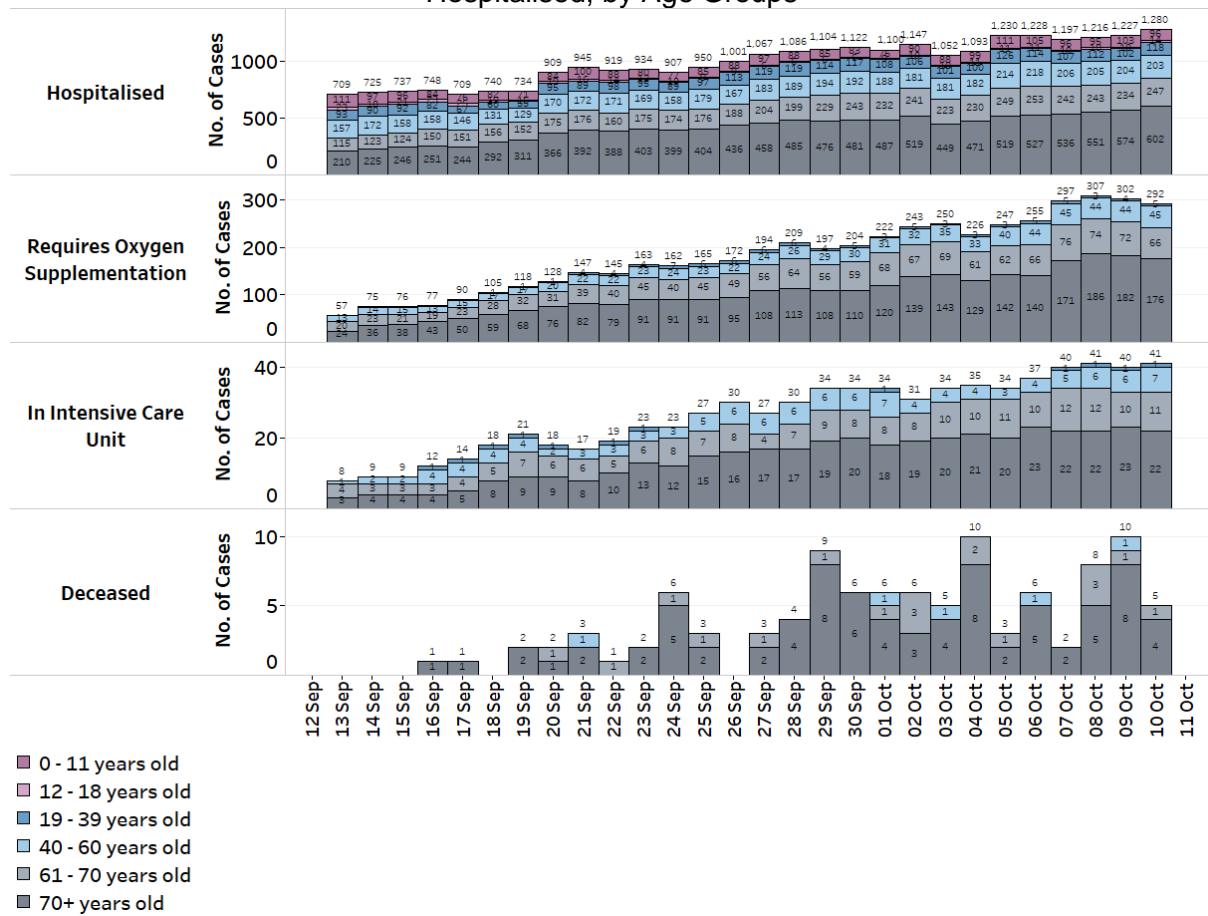


<sup>1</sup> Includes only new cases reported in the past 28 days. Based on cases' worst-ever condition; deceased cases previously in ICU are counted under 'Deceased' and not under 'Ever in Intensive Care Unit'.

2. 9 more cases have passed away from complications due to COVID-19 infection.<sup>2</sup> Of these, 8 were male Singaporeans and 1 was a female Singaporean, aged between 70 and 88 years. Amongst them, 4 had been unvaccinated against COVID-19, 3 had been partially vaccinated and 2 had been vaccinated. All of them had various underlying medical conditions.

3. Amongst those who have passed away over the last 28 days, 29.8% were fully vaccinated and 70.2% were unvaccinated/ partially vaccinated.

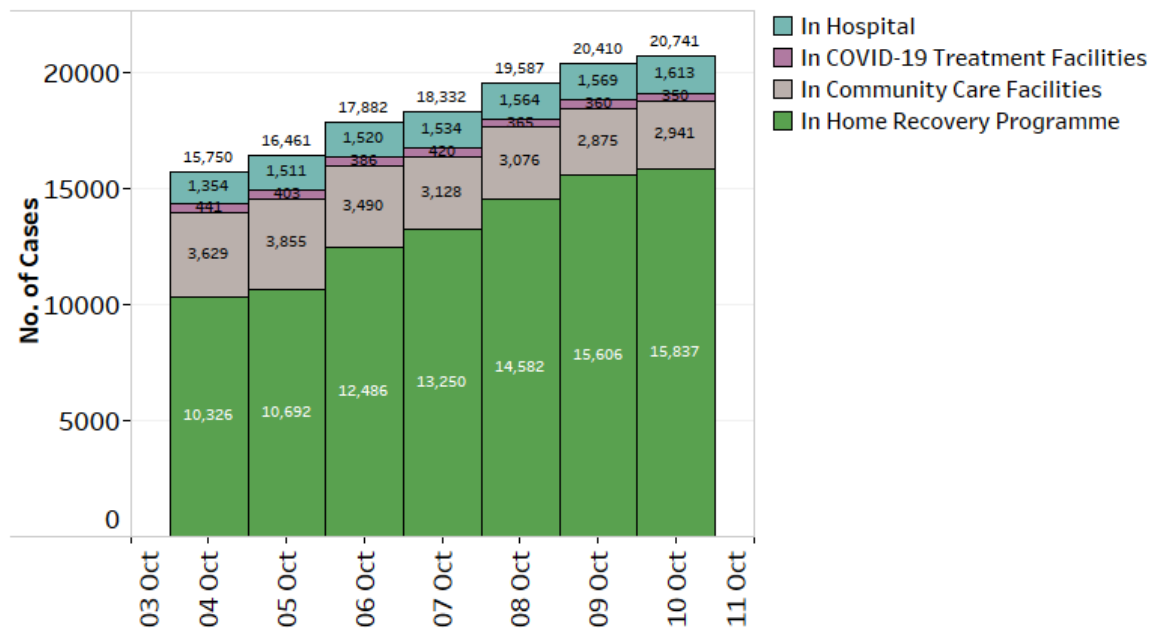
**Figure 2:** Deaths and Active Cases in ICU, Requiring Oxygen Supplementation or Hospitalised, by Age Groups



<sup>2</sup> Cases 82104, 86876, 110372, 116365, 116965, 117726, 117322, 121256 and 128844. .

4. As of 10 October 2021, 12pm, amongst all COVID-19 community cases who have been onboarded or admitted, 15,837 (76.6%) cases are undergoing Home Recovery. 2,941 (14.2%) cases are in Community Care Facilities, 350 (1.7%) cases are in COVID-19 Treatment Facilities, and 1,613 (7.8%) COVID-19 patients are currently warded in hospital, mostly for observation. 292 require oxygen supplementation, and 41 are in the ICU.

**Figure 3:** Breakdown of Number of Active Cases in Hospital, COVID-19 Treatment Facilities, Community Care Facilities, and Home Recovery Programme in the Last 7 Days



### Vaccination progress

5. As of 9 October 2021, 83% of our population has completed their full regimen/ received two doses of COVID-19 vaccines, and 85% has received at least one dose.

6. We have administered a total of 9,426,896 doses of COVID-19 vaccines under the national vaccination programme (Pfizer-BioNTech Comirnaty and Moderna). In total, 4,601,688 individuals have received at least one dose of vaccine under the national vaccination programme, and 4,541,733 individuals having completed the full vaccination regimen. In addition, 212,622 doses of other vaccines recognised in the World Health Organization’s Emergency Use Listing (WHO EUL) have been administered, covering 112,381 individuals.

7. To date, we have invited about 600,000 eligible individuals to receive their booster doses. 411,447 individuals have received their booster shots and another 74,000 have booked their appointments.

## Active clusters under close monitoring

8. We are closely monitoring the clusters listed below, which have already been ringfenced through tracing, testing and isolation.

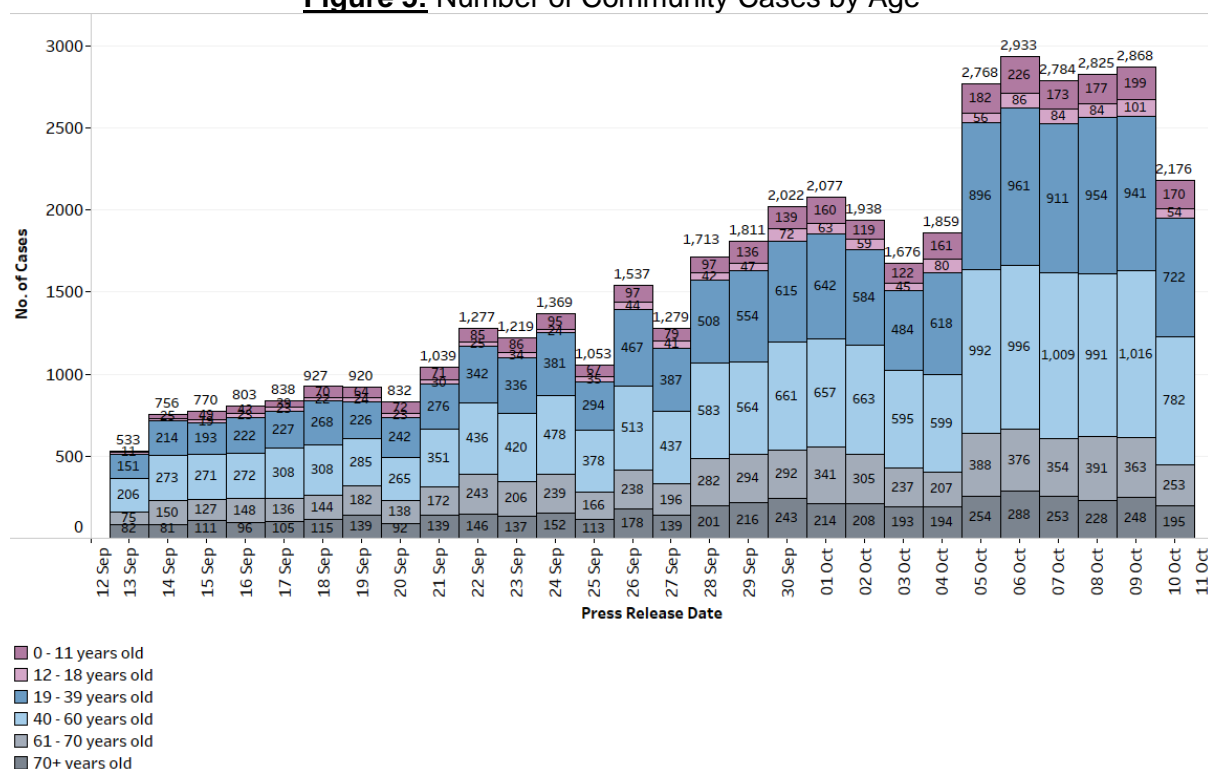
**Figure 4:** Large Clusters with New Cases

Cluster	New Cases	Total <sup>3</sup>	Remarks
United Medicare Centre (Toa Payoh)	1	74	Transmission amongst staff and residents. Of the 74 cases, 13 are staff, 60 are residents, and 1 is a household member of a case.
ASPRI-Westlite Papan Dormitory	4	237	Intra-dormitory transmission amongst residents with no evidence of spread beyond dormitory.

## Summary of trends for local cases

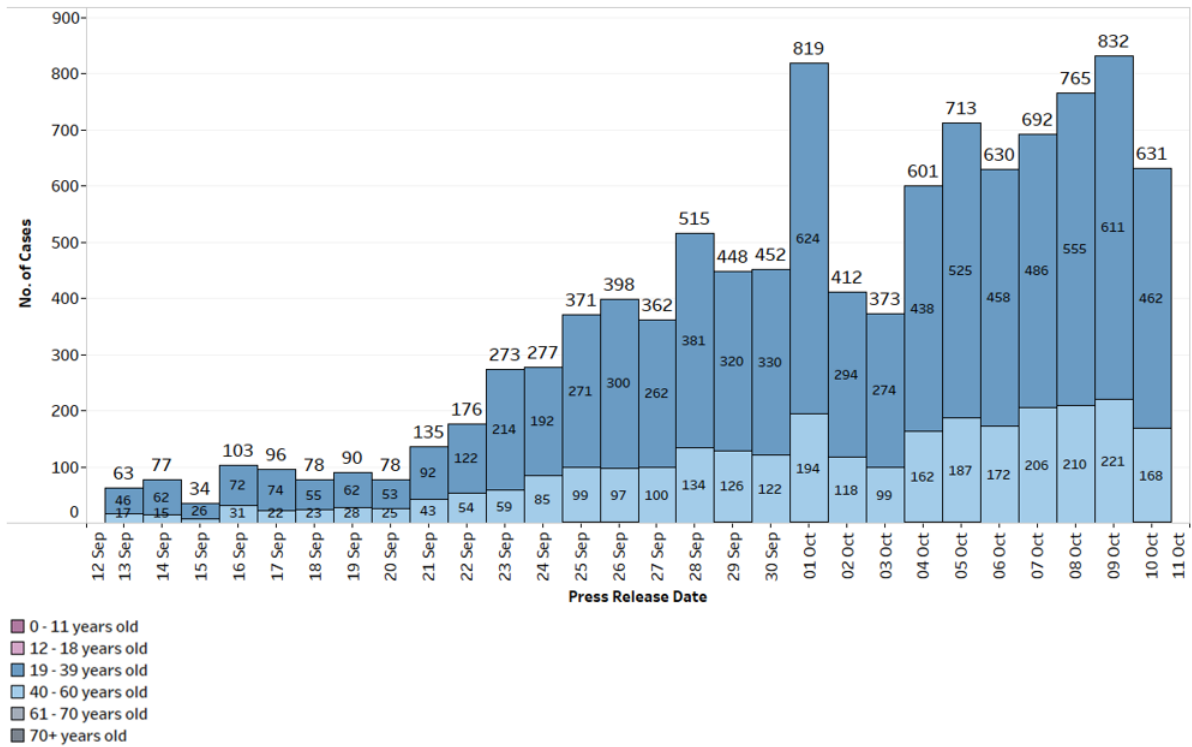
9. As of 10 October 2021, 12pm, the Ministry of Health has detected a total of 2,809 new cases of COVID-19 infection in Singapore, comprising 2,176 community cases, 631 dormitory residents cases and 2 imported cases. Amongst the local cases today are 449 seniors who are above 60 years. The fall in the number of cases today is likely due to fewer swabs being done over the weekend at PHPCs and polyclinics, and is not indicative that the epidemic curve is bending.

**Figure 5:** Number of Community Cases by Age



<sup>3</sup> Includes new cases added today.

**Figure 6:** Number of Dormitory Cases by Age



10. Please refer to MOH's daily Situation Report ([www.moh.gov.sg/covid-19/situation-report](http://www.moh.gov.sg/covid-19/situation-report)) for details.

**MINISTRY OF HEALTH**  
**10 OCTOBER 2021**