



**FOR IMMEDIATE RELEASE**

## **UPDATE ON LOCAL COVID-19 SITUATION**

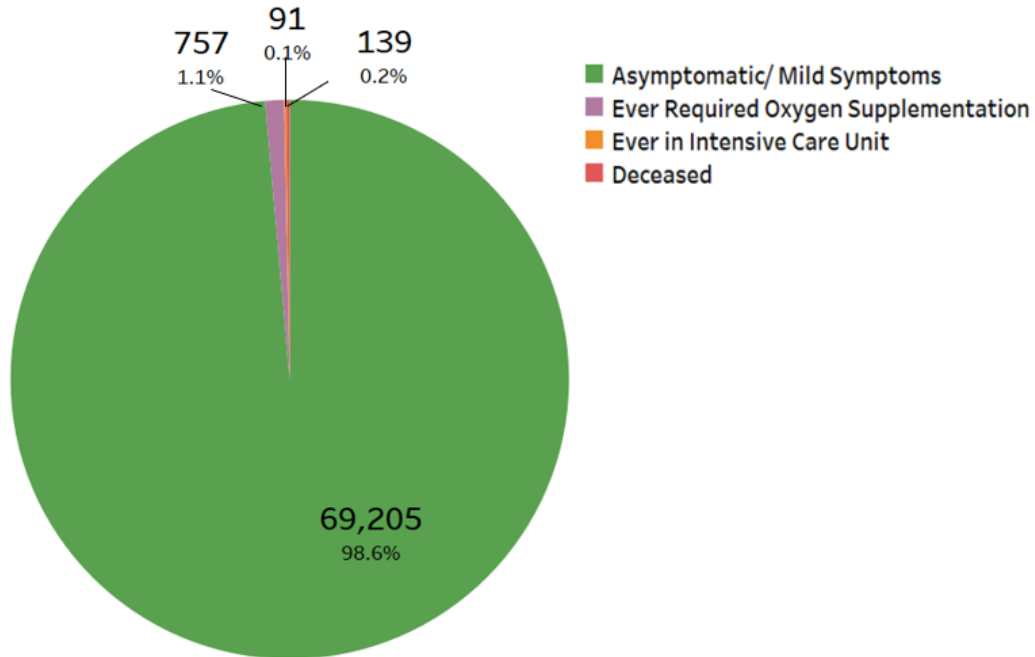
### **Summary of local situation**

- 1,651 cases are currently warded in hospital. 327 cases require oxygen supplementation and 66 are in the intensive care unit (ICU).
- Over the last 28 days, of the 70,192 infected individuals, 98.6% had no or mild symptoms, 1.1% required oxygen supplementation, 0.1% required ICU care, and 0.2% has died.
- As of 16 October 2021, 84% of our population has completed their full regimen/ received two doses of COVID-19 vaccines, and 85% has received at least one dose.
- As of 17 October 2021, 12pm, the Ministry of Health has detected a total of 3,058 new cases of COVID-19 infection in Singapore, with 2,454 in the community, 601 in the migrant worker dormitories and 3 imported cases.

## Situation update

1. Over the last 28 days, 98.6% of local infected cases were asymptomatic or had mild symptoms, 1.1% required oxygen supplementation, and 0.1% had been in the ICU. Amongst those who required oxygen supplementation and ICU, 48.5% were fully vaccinated and 51.5% were unvaccinated/ partially vaccinated.

**Figure 1:** Local Cases in the Last 28 Days by Severity of Condition<sup>1</sup>

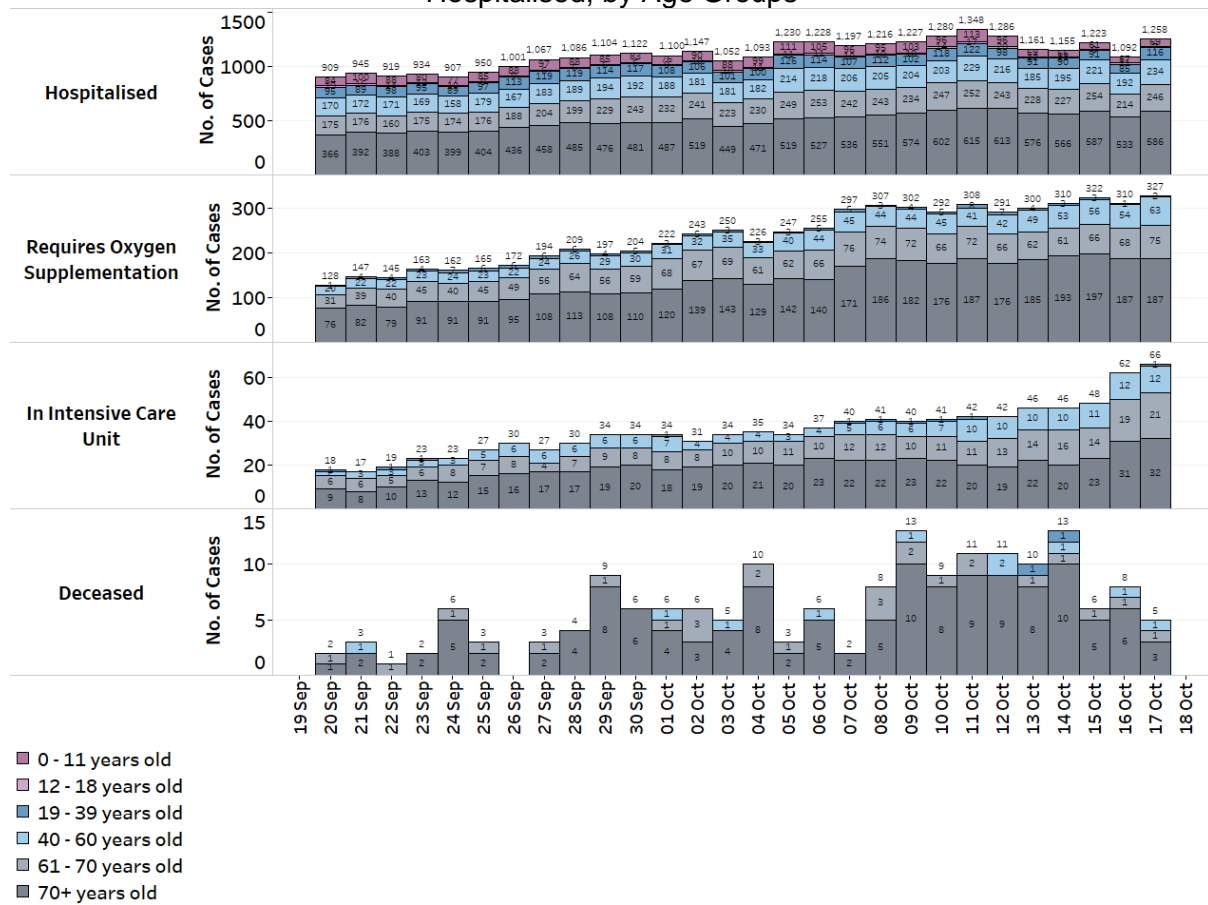


<sup>1</sup> Includes only new cases reported in the past 28 days. Based on cases' worst-ever condition; deceased cases previously in ICU are counted under 'Deceased' and not under 'Ever in Intensive Care Unit'.

2. 9 more cases have passed away from complications due to COVID-19 infection.<sup>2</sup> Of these, 6 were male Singaporeans and 3 were female Singaporeans, aged between 57 and 100 years. Amongst them, 7 had been unvaccinated against COVID-19, and 2 had been vaccinated. 8 of them had various underlying medical conditions, while an unvaccinated case had no known medical conditions.

3. Amongst those who have passed away over the last 28 days, 25.9% were fully vaccinated and 74.1% were unvaccinated/ partially vaccinated.

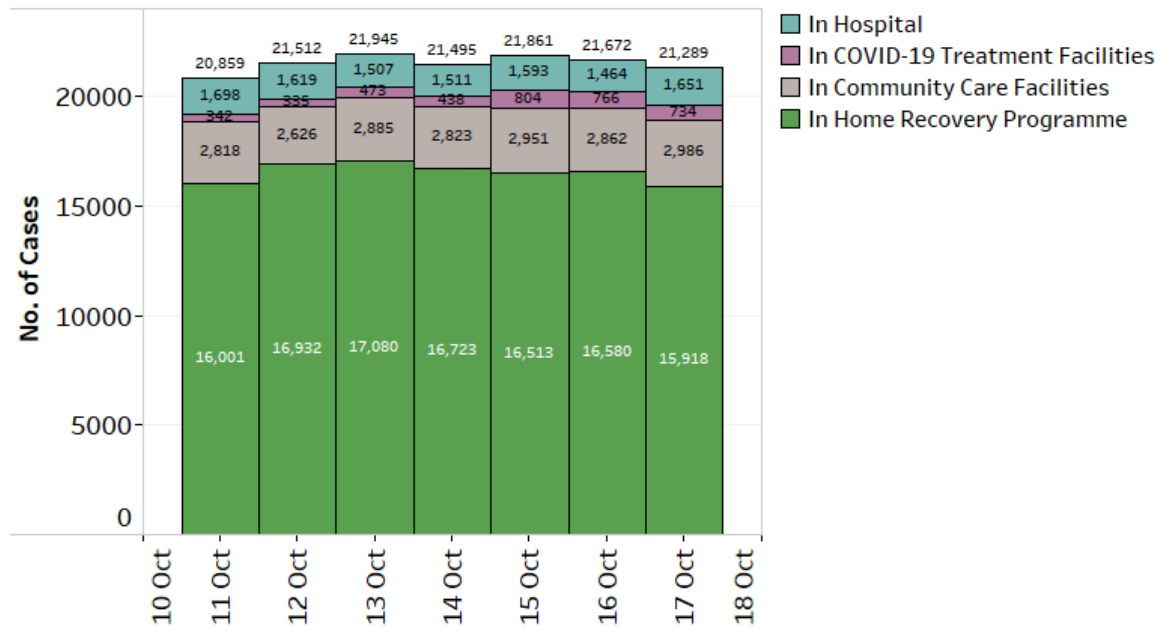
**Figure 2:** Deaths and Active Cases in ICU, Requiring Oxygen Supplementation or Hospitalised, by Age Groups



<sup>2</sup> Cases 89374, 93067, 103696, 118141, 119504, 137441, 140089, 141833 and 144137.

4. As of 17 October 2021, 12pm, amongst all COVID-19 community cases who have been onboarded or admitted, 15,918 (74.8%) cases are undergoing Home Recovery. 2,986 (14.0%) cases are in Community Care Facilities, 734 (3.4%) cases are in COVID-19 Treatment Facilities, and 1,651 (7.8%) COVID-19 patients are currently warded in hospital, mostly for observation. 327 require oxygen supplementation, and 66 are in the ICU.

**Figure 3:** Breakdown of Number of Active Cases in Hospital, COVID-19 Treatment Facilities, Community Care Facilities, and Home Recovery Programme in the Last 7 Days



### Vaccination progress

5. As of 16 October 2021, 84% of our population has completed their full regimen/ received two doses of COVID-19 vaccines, and 85% has received at least one dose.

6. We have administered a total of 9,626,233 doses of COVID-19 vaccines under the national vaccination programme (Pfizer-BioNTech Comirnaty and Moderna). In total, 4,618,780 individuals have received at least one dose of vaccine under the national vaccination programme, and 4,557,917 individuals having completed the full vaccination regimen. In addition, 225,792 doses of other vaccines recognised in the World Health Organization’s Emergency Use Listing (WHO EUL) have been administered, covering 117,738 individuals.

7. To date, we have invited about 780,000 eligible individuals to receive their booster doses. 577,069 individuals have received their booster shots and another 88,000 have booked their appointments.

## Active clusters under close monitoring

8. We are closely monitoring the clusters listed below, which have already been ringfenced through tracing, testing and isolation.

**Figure 4:** Large Clusters with New Cases

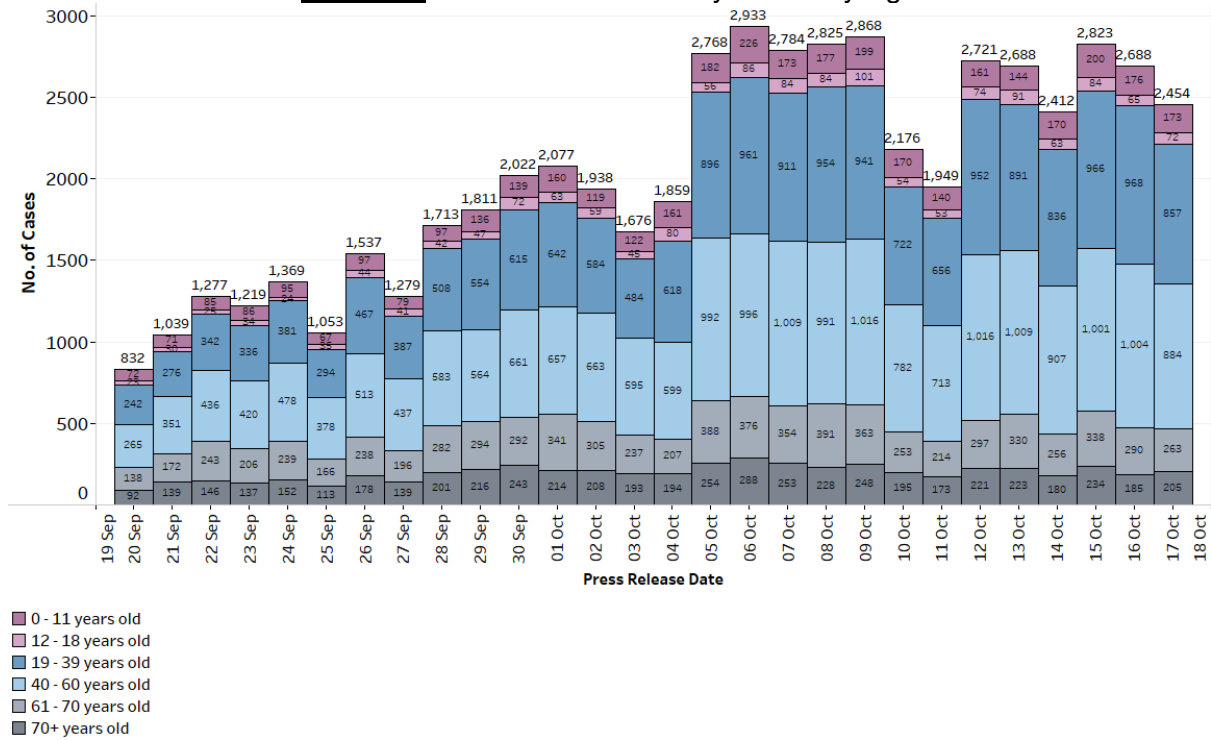
Cluster	New Cases	Total <sup>3</sup>	Remarks
Apex Harmony Lodge	2	12	Transmission amongst staff and residents. Of the 12 cases, 4 are staff and 8 are residents.
ECON Medicare Centre & Nursing Home (10 Buangkok View Block 5)	4	63	Transmission amongst staff and residents. Of the 63 cases, 3 are staff and 60 are residents.
MWS Christalite Methodist Home	2	109	Transmission amongst staff and residents. Of the 109 cases, 15 are staff and 94 are residents.
Learning Vision @ Changi Airport	1	17	Transmission amongst staff and students. Of the 17 cases, 2 are staff, 13 are students and 2 are household members of cases.
MY World Preschool @ Hougang Dewcourt	1	14	Transmission amongst staff and students. Of the 14 cases, 3 are staff, 9 are students and 2 are household contacts of cases.

<sup>3</sup> Includes new cases added today.

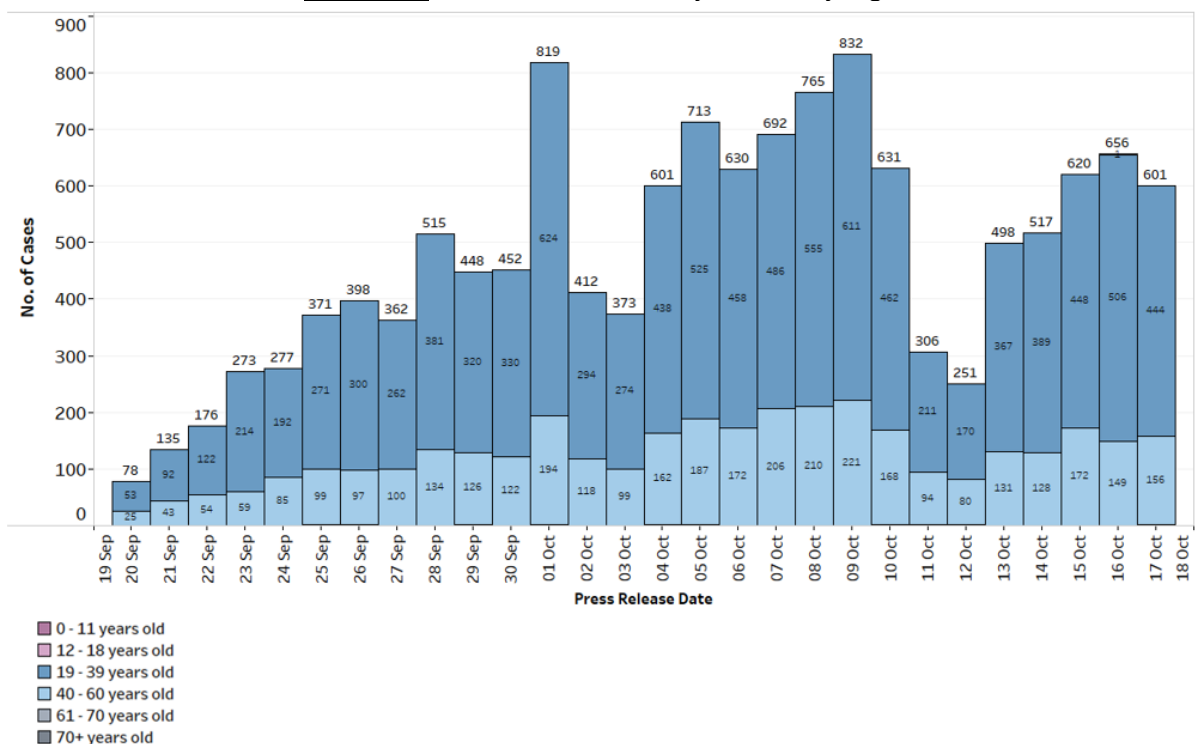
## Summary of trends for local cases

9. As of 17 October 2021, 12pm, the Ministry of Health has detected a total of 3,058 new cases of COVID-19 infection in Singapore, comprising 2,454 community cases, 601 dormitory residents cases and 3 imported cases. Amongst the local cases today are 469 seniors who are above 60 years.

**Figure 5: Number of Community Cases by Age**



**Figure 6: Number of Dormitory Cases by Age**



10. Please refer to MOH's daily Situation Report ([www.moh.gov.sg/covid-19/situation-report](http://www.moh.gov.sg/covid-19/situation-report)) for details.

**MINISTRY OF HEALTH**  
**17 OCTOBER 2021**

---