



**FOR IMMEDIATE RELEASE**

## **UPDATE ON LOCAL COVID-19 SITUATION**

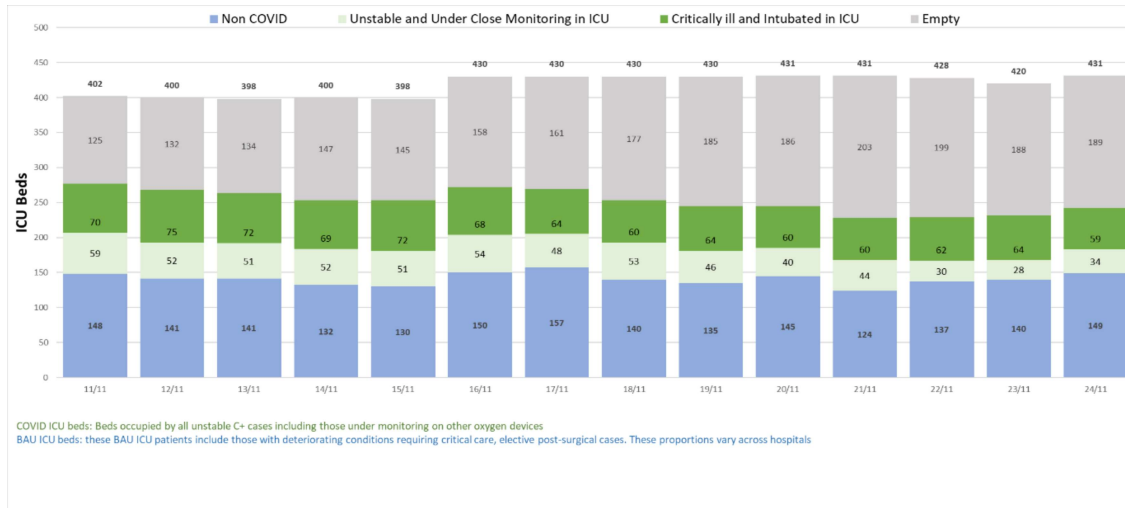
### **Summary of local situation**

- 1,365 cases remain warded in hospital. 203 cases require oxygen supplementation in the general ward, 34 are unstable and under close monitoring in the intensive care unit (ICU), and 59 are critically ill and intubated in the ICU. The current overall ICU utilisation rate is 56.1%.
- Over the last 28 days, of the 72,913 infected individuals, 98.7% had no or mild symptoms, 0.8% required oxygen supplementation in the general ward, 0.2% were in the ICU, and 0.2% has died.
- As of 23 November 2021, 94% of our eligible population has completed their full regimen/ received two doses of COVID-19 vaccines. Among the total population, 85% has completed their full regimen/ received two doses of COVID-19 vaccines, 86% has received at least one dose, and 24% has received their booster shots.
- Over the past day, 2,275 cases were discharged, of whom 366 are seniors aged 60 years and above. 2,079 new cases of COVID-19 infection were detected, with 2,030 in the community, 40 in the migrant worker dormitories and 9 imported cases. The weekly infection growth rate is 0.75.

## Situation at Hospitals

1. As of 24 November 2021, 203 cases require oxygen supplementation in the general ward, 34 are unstable and under close monitoring in the ICU to prevent further deterioration, and 59 are critically ill and intubated in the ICU. The current overall ICU utilisation rate is 56.1%.

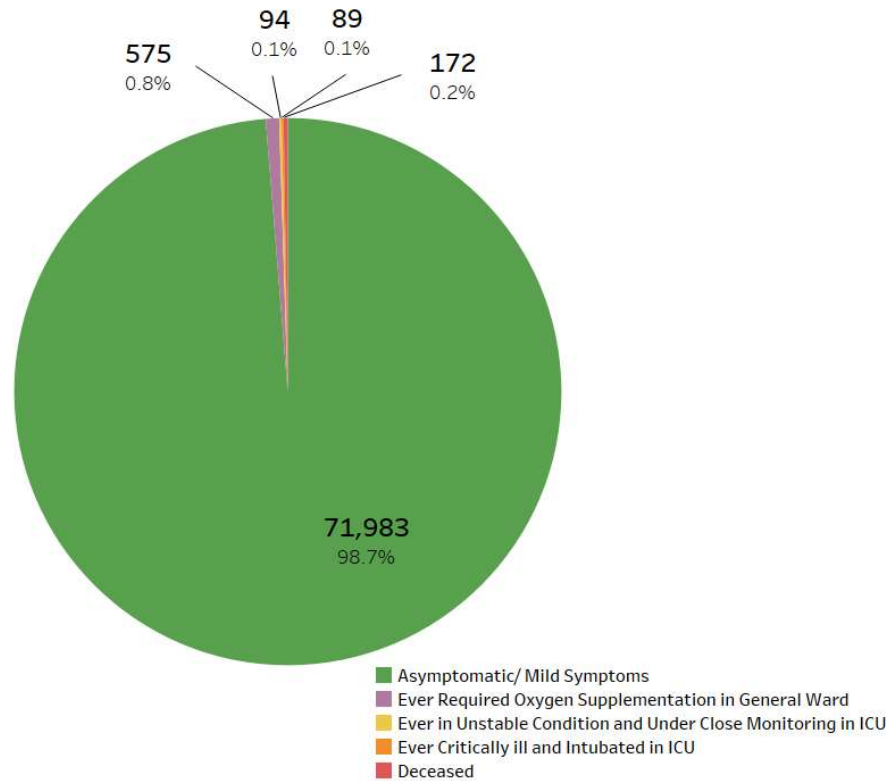
**Figure 1: Daily Adult ICU Bed Utilisation**



## Status of Patients

2. Over the last 28 days, 98.7% of local infected cases were asymptomatic or had mild symptoms, 0.8% required oxygen supplementation in the general ward, 0.1% were unstable and under close monitoring in the ICU to prevent further deterioration, and 0.1% had been critically ill and intubated in the ICU.

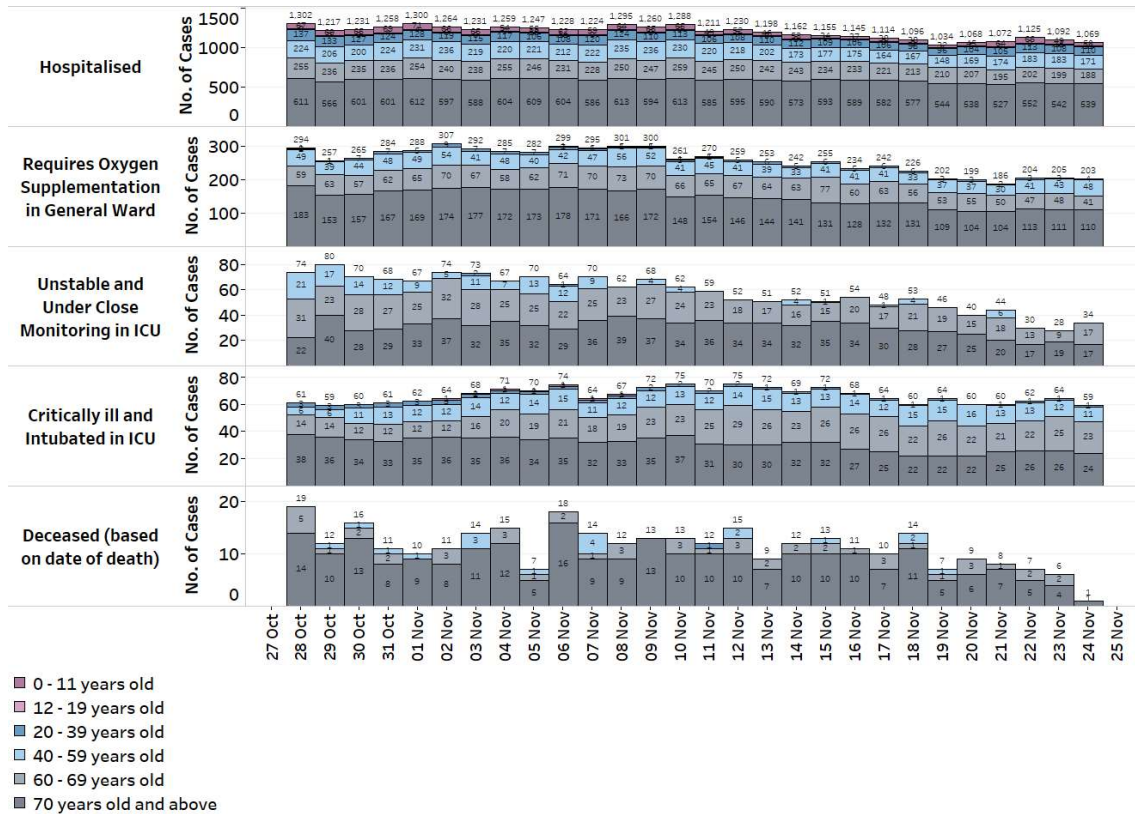
**Figure 2:** Local Cases in the Last 28 Days by Severity of Condition<sup>1</sup>



<sup>1</sup> Includes only new cases reported in the past 28 days. Based on cases' worst-ever condition; deceased cases previously in ICU are counted under 'Deceased' and not under 'Ever Critically ill and Intubated in ICU'.

3. Seniors 60 years old and above, especially if unvaccinated, continue to be more adversely affected by COVID-19:

**Figure 3:** Patients Needing Oxygen Supplementation, ICU Care or Died<sup>2</sup>, by Age Groups



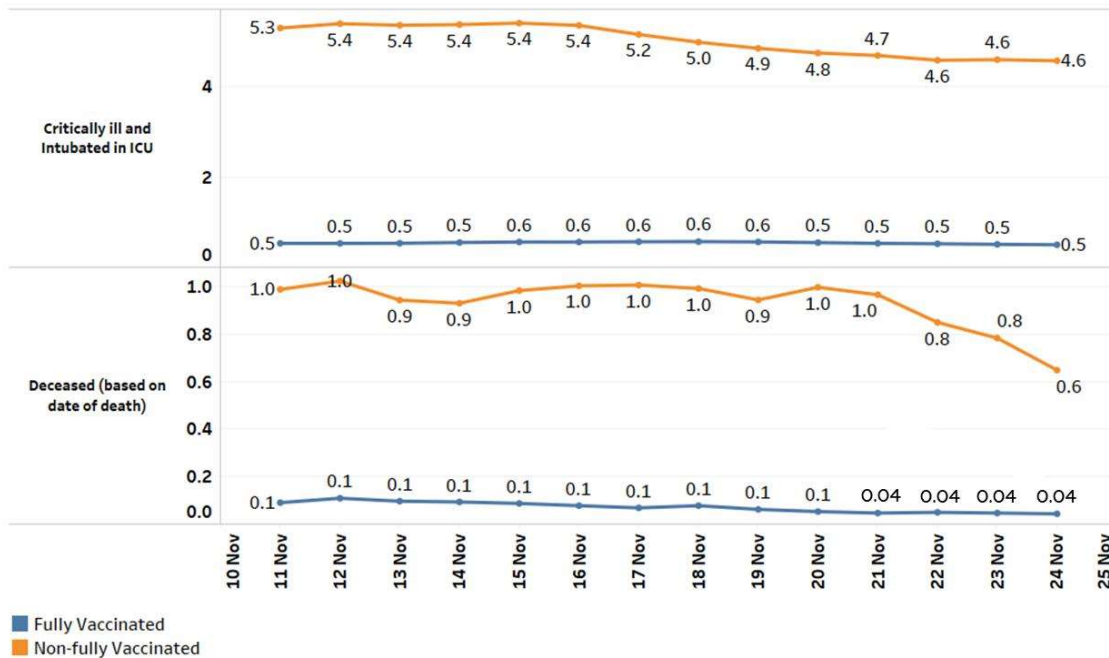
<sup>2</sup> May differ from the deaths reported for the day as the latter includes those who have passed on earlier, but whose cause of death was investigated and confirmed only later, e.g. Coroner's cases.

## Vaccination

4. As of 23 November 2021, 94% of our eligible population (aged 12 years and above) has completed their full regimen/ received two doses of COVID-19 vaccines. Among the total population, 85% has completed their full regimen/ received two doses of COVID-19 vaccines, 86% has received at least one dose, and 24% has received their booster shots.

5. Over the past 7 days, the number of fully vaccinated and non-fully vaccinated cases who are critically ill in the ICU are at 0.5 and 4.6 per 100,000 population respectively. Over the same period, the number of fully vaccinated and non-fully vaccinated cases who died are 0.04 and 0.6 per 100,000 population respectively. Among seniors aged 60 and above, the number of fully vaccinated and non-fully vaccinated cases who are critically ill in the ICU are 1.6 and 41.8 respectively. The number of fully vaccinated and non-fully vaccinated seniors who died are 0.2 and 7.0 respectively.

**Figure 4:** 7-Day Moving Average of Number of Deaths and Active Cases in ICU, per 100,000 Population by Vaccination Status <sup>3</sup>



<sup>3</sup> Non-fully vaccinated comprises persons who are partially vaccinated and completely unvaccinated.

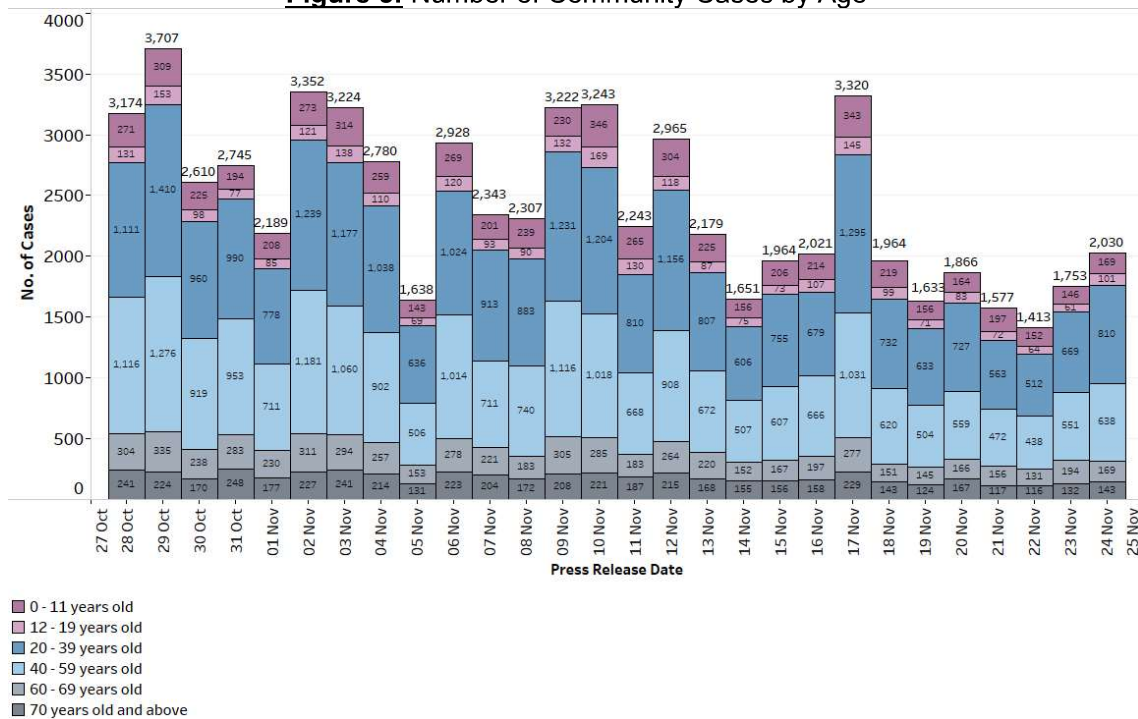
## Inflow and Outflow of Cases

6. Over the past day, 2,275 cases were discharged, of whom 366 are seniors aged 60 years and above.

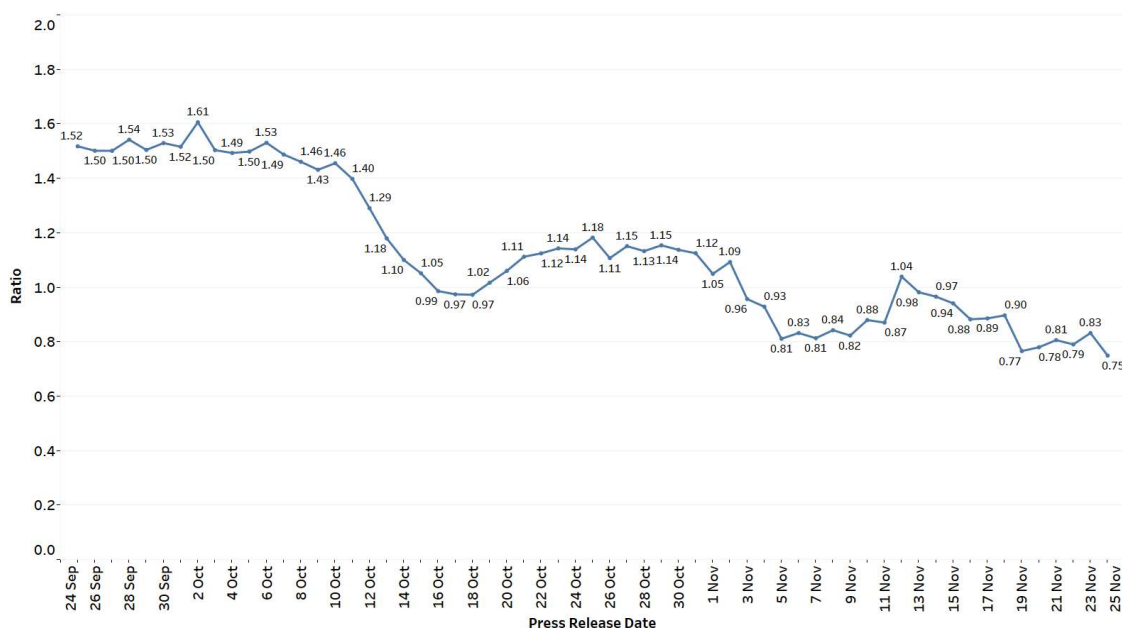
7. As of 24 November 2021, 12pm, the Ministry of Health has detected a total of 2,079 new cases of COVID-19 infection, comprising 2,030 community cases, 40 dormitory resident cases and 9 imported cases. Amongst the community cases today are 312 seniors who are aged 60 years and above. The ratio of community cases for the past week over the week before is 0.75.

8. 6 more cases, aged between 60 and 83 years, have passed away from complications due to COVID-19 infection. All of them, except for an unvaccinated case, had various underlying medical conditions.

**Figure 5:** Number of Community Cases by Age



**Figure 6: Week-on-week Infection Ratio<sup>4</sup>**



9. We are closely monitoring the clusters listed below, which have already been ringfenced through tracing, testing and isolation.

**Figure 7: Large Clusters with New Cases**

Cluster	New Cases	Total <sup>5</sup>	Remarks
Society for the Aged Sick	3	24	Transmission amongst staff and residents. Of the 24 cases, 2 are staff and 22 are residents.
Sunlove Senior Care Centre @ 70 Buangkok View	1	24	Transmission amongst staff and clients. Of the 24 cases, 2 are staff, 17 are clients, and 5 are household members.
Pacific Healthcare Nursing Home (6 Lengkok Bahru)	7	32	Transmission amongst residents. Of the 32 cases, all are residents.
Jenaris Home @ Pelangi Village	7	94	Transmission amongst staff and residents. Of the 94 cases, 2 are staff and 92 are residents.

10. Please refer to MOH's daily Situation Report ([www.moh.gov.sg/covid-19/situation-report](http://www.moh.gov.sg/covid-19/situation-report)) for details.

**MINISTRY OF HEALTH  
24 NOVEMBER 2021**

<sup>4</sup> Ratio of community cases in the past week over the week before.

<sup>5</sup> Includes new cases added today.