



FOR IMMEDIATE RELEASE

UPDATE ON LOCAL COVID-19 SITUATION

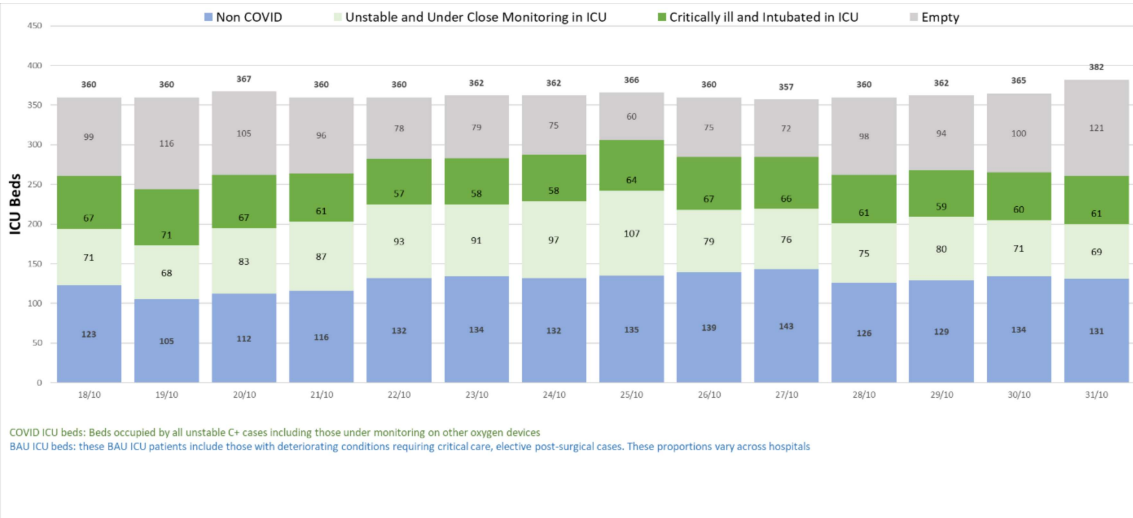
Summary of local situation

- 1,672 cases remain warded in hospital. 284 cases require oxygen supplementation in the general ward, 69 are unstable and under close monitoring in the intensive care unit (ICU), and 61 are critically ill and intubated in the ICU. The current overall ICU utilisation rate is 68.3%.
- Over the last 28 days, of the 94,369 infected individuals, 98.7% had no or mild symptoms, 0.8% required oxygen supplementation in the general ward, 0.3% were in the ICU, and 0.2% has died.
- As of 30 October 2021, 84% of our population has completed their full regimen/ received two doses of COVID-19 vaccines, 85% has received at least one dose, and 15% has received boosters.
- Over the past day, 3,759 cases were discharged, of whom 528 are seniors aged 60 years and above. 3,163 new cases of COVID-19 infection were detected, with 2,745 in the community, 414 in the migrant worker dormitories and 4 imported cases. The weekly infection growth rate is 1.12.

Situation at Hospitals

1. As of 31 October 2021, 284 cases require oxygen supplementation in the general ward, 69 are unstable and under close monitoring in the ICU to prevent further deterioration, and 61 are critically ill and intubated in the ICU. The current overall ICU utilisation rate is 68.3%.

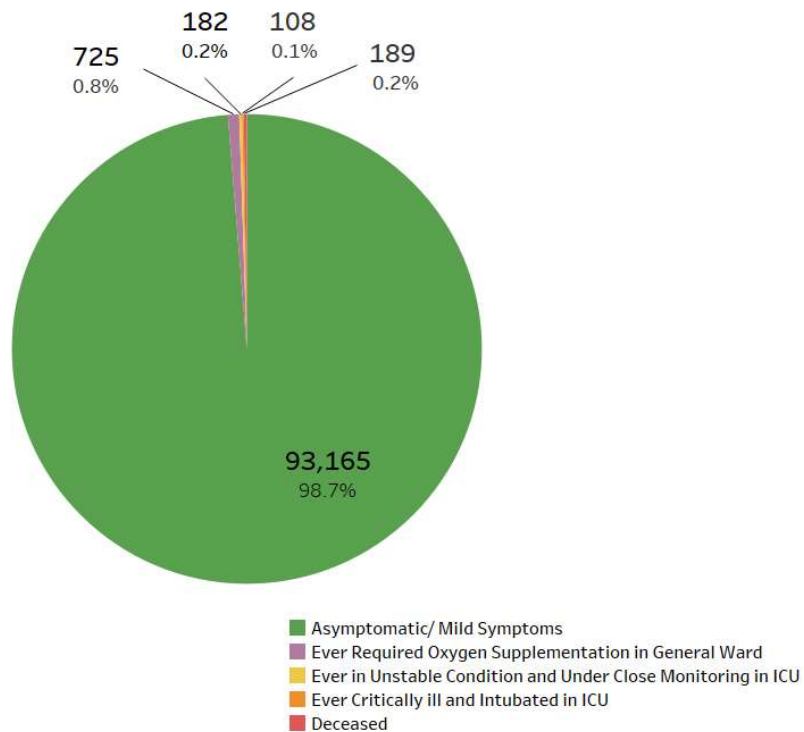
Figure 1: Daily Adult ICU Bed Utilisation



Status of Patients

2. Over the last 28 days, 98.7% of local infected cases were asymptomatic or had mild symptoms, 0.8% required oxygen supplementation in the general ward, 0.2% were unstable and under close monitoring in the ICU to prevent further deterioration, and 0.1% had been critically ill and intubated in the ICU.

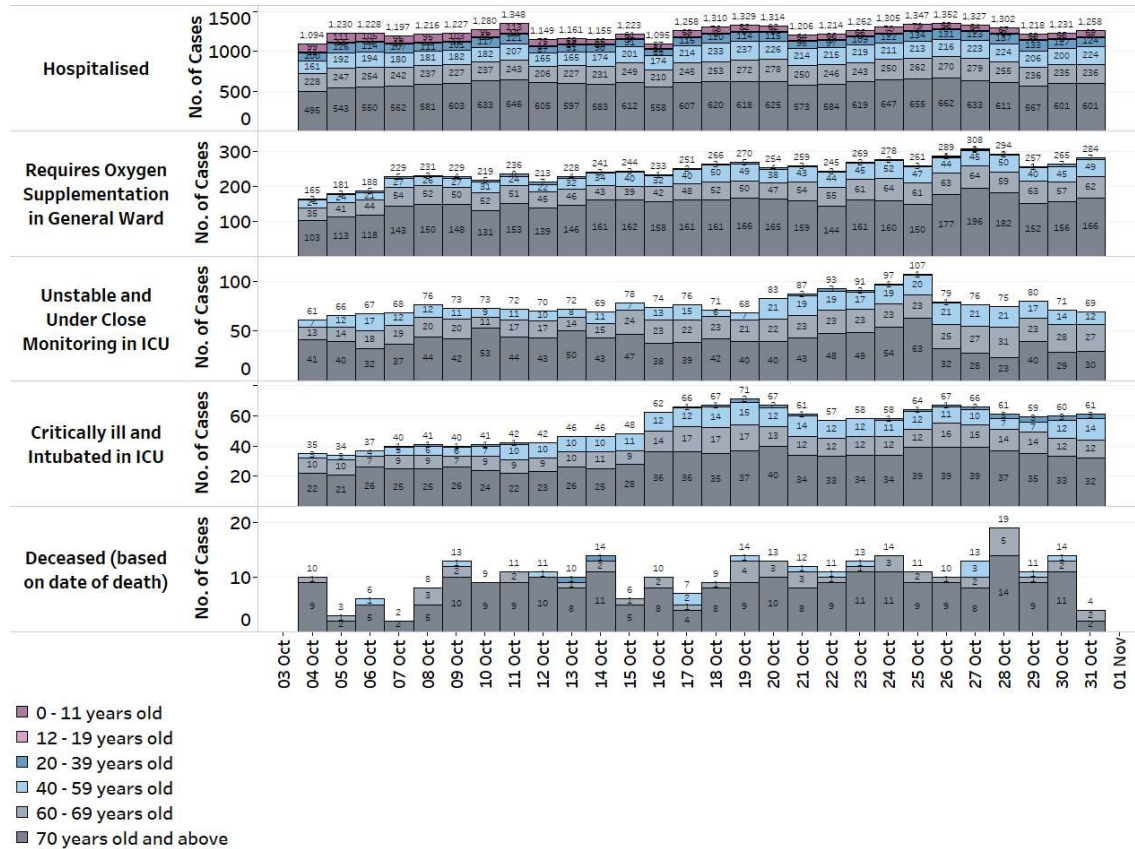
Figure 2: Local Cases in the Last 28 Days by Severity of Condition¹



¹ Includes only new cases reported in the past 28 days. Based on cases' worst-ever condition; deceased cases previously in ICU are counted under 'Deceased' and not under 'Ever Critically ill and Intubated in ICU'.

3. Seniors 60 years old and above, especially if unvaccinated, continue to be more adversely affected by COVID-19:

Figure 3: Patients Needing Oxygen Supplementation, ICU Care or Died², by Age Groups



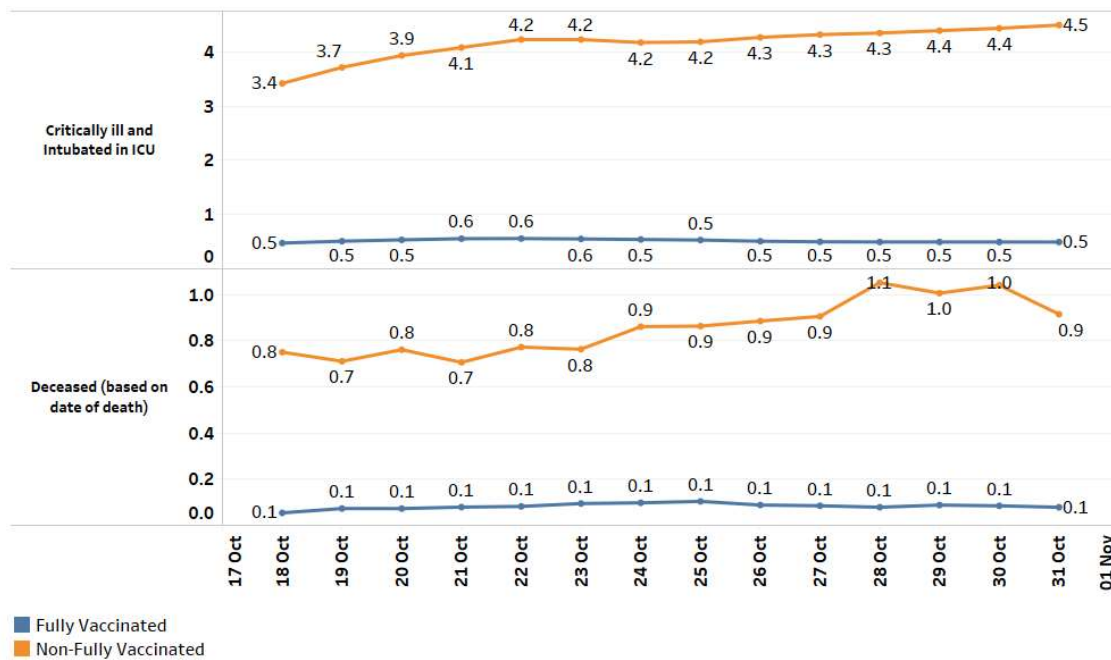
² May differ from the deaths reported for the day as the latter includes those who have passed on earlier, but whose cause of death was investigated and confirmed only later, e.g. Coroner's cases.

Vaccination

4. As of 30 October 2021, 84% of our population has completed their full regimen/ received two doses of COVID-19 vaccines, 85% has received at least one dose, and 15% has received their booster shots.

5. Over the past 7 days, the number of fully vaccinated and non-fully vaccinated cases who are critically ill in the ICU are at 0.5 and 4.5 per 100,000 population respectively. Over the same period, the number of fully vaccinated and non-fully vaccinated cases who died are 0.1 and 0.9 per 100,000 population respectively. Among seniors aged 60 and above, the number of fully vaccinated and non-fully vaccinated cases who are critically ill in the ICU are 2.0 and 35.8 respectively. The number of fully vaccinated and non-fully vaccinated seniors who died are 0.4 and 8.7 respectively.

Figure 4: 7-Day Moving Average of Number of Deaths and Active Cases in ICU or Requiring Oxygen Supplementation, per 100,000 Population by Vaccination Status³



³ Non-fully vaccinated comprises persons who are partially vaccinated and completely unvaccinated.

Inflow and Outflow of Cases

6. Over the past day, 3,759 cases were discharged, of whom 528 are seniors aged 60 and above.

7. As of 31 October 2021, 12pm, the Ministry of Health has detected a total of 3,163 new cases of COVID-19 infection were detected, comprising 2,745 community cases, 414 dormitory resident cases and 4 imported cases. Amongst the community cases today are 531 seniors who are aged 60 and above. The ratio of community cases for the past week over the week before is 1.12.

8. 13 more cases, aged between 57 and 89 years, have passed away from complications due to COVID-19 infection. All of them had various underlying medical conditions, except for 2 unvaccinated/ partially vaccinated individuals who had no known medical conditions.

Figure 5: Number of Community Cases by Age

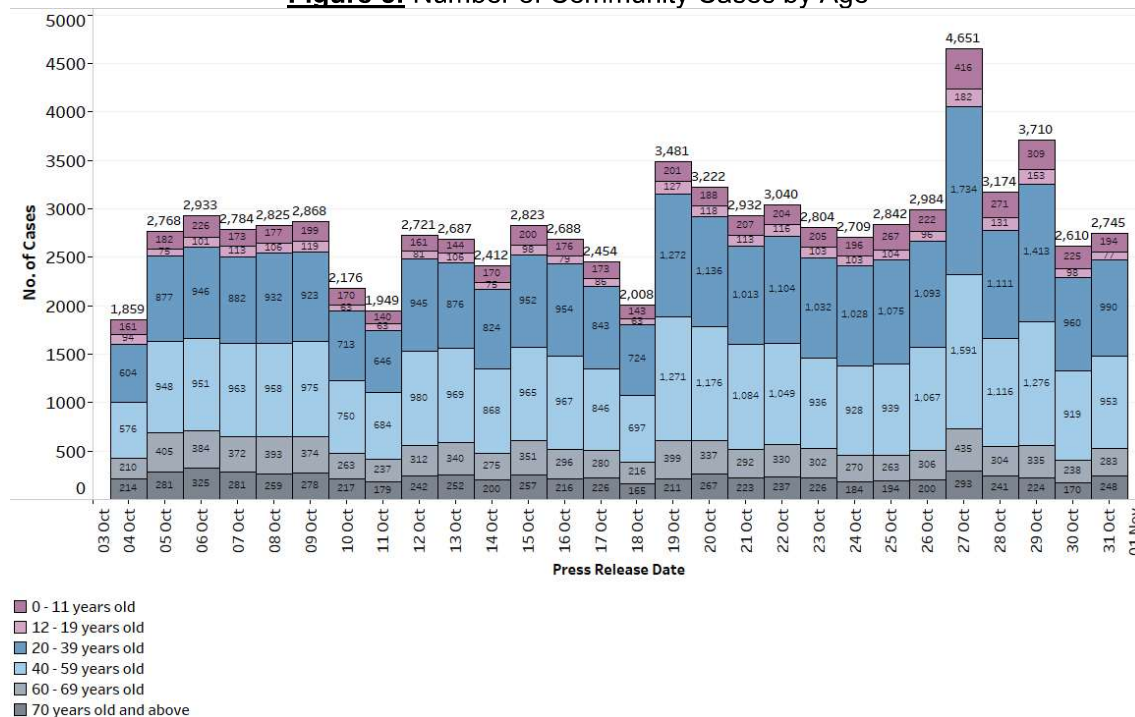
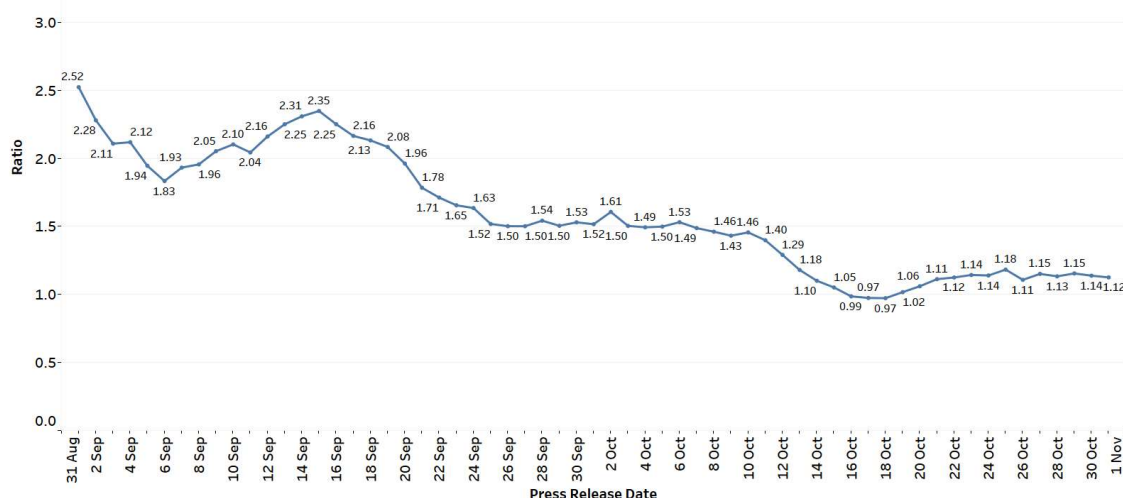


Figure 6: Weekly Infection Growth Rate⁴



9. We are closely monitoring the clusters listed below, which have already been ringfenced through tracing, testing and isolation.

Figure 7: Large Clusters with New Cases

Cluster	New Cases	Total ⁵	Remarks
Orange Valley Nursing Home (Clementi)	1	14	Transmission amongst staff and residents. Of the 14 cases, 1 is a staff and 13 are residents.
ECON Medicare Centre & Nursing Home (10 Buangkok View Block 9)	5	34	Transmission amongst residents. Of the 34 cases, all are residents.
PCF Sparkletots @ Whampoa Block 85	1	20	Transmission amongst students. Of the 20 cases, 13 are students and 7 are household contacts of cases.
Institute of Mental Health	3	266	Transmission amongst staff and patients. Of the 266 cases, 16 are staff and 250 are patients.

10. Please refer to MOH's daily Situation Report (www.moh.gov.sg/covid-19/situation-report) for details.

MINISTRY OF HEALTH
31 OCTOBER 2021

⁴ Ratio of community cases in the past week over the week before.

⁵ Includes new cases added today.