



FOR IMMEDIATE RELEASE

UPDATE ON LOCAL COVID-19 SITUATION

Summary of local situation

- 1,120 cases are currently warded in hospital. There are currently 163 cases of serious illness requiring oxygen supplementation, and 23 in critical condition in the intensive care unit (ICU).
- Over the last 28 days, of the 15,791 infected individuals, 97.9% had no or mild symptoms, 1.8% required oxygen supplementation, 0.2% required ICU care, and 0.1% has died.
- As of 22 September 2021, 82% of our population has completed their full regimen/ received two doses of COVID-19 vaccines, and 84% has received at least one dose.
- As of 23 September 2021, 12pm, the Ministry of Health has detected a total of 1,504 new cases of COVID-19 infection in Singapore, with 1,218 in the community, 273 in the migrant worker dormitories and 13 imported cases.

Condition of hospitalised cases

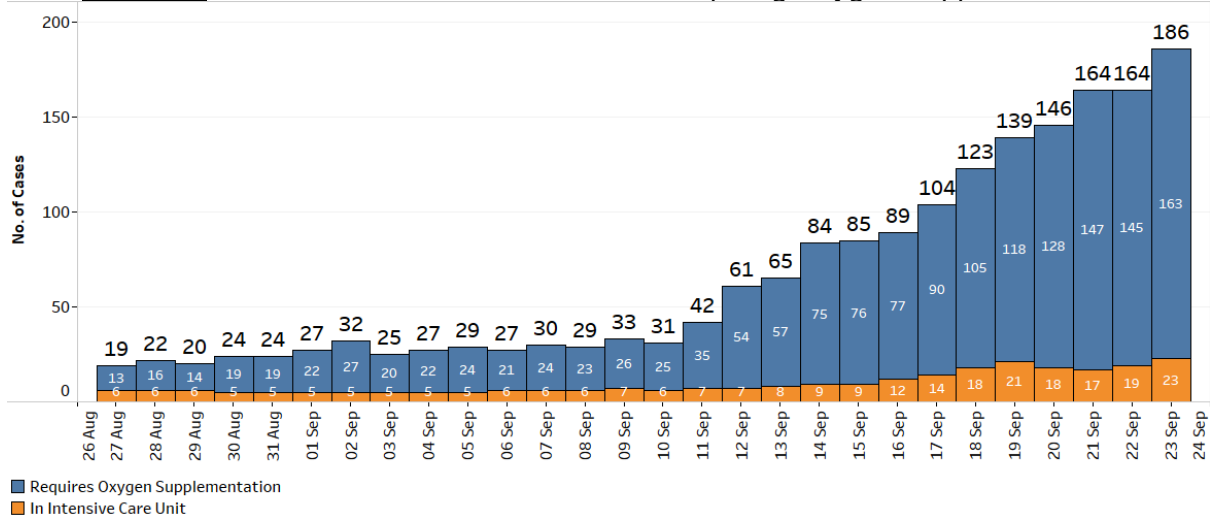
As of 23 September 2021, 12pm, 1,120 COVID-19 cases are currently warded in hospital. Most are well and under observation. There are currently 163 cases of serious illness requiring oxygen supplementation, and 23 in critical condition in the ICU. Of those who have fallen very ill, 155 are seniors above 60 years.

2. Case 78524, a 93 year-old female Singaporean, has passed away from complications due to COVID-19 infection on 23 September 2021. She tested positive for COVID-19 infection on 17 September. She had not been vaccinated against COVID-19, and had a history of heart failure, diabetes mellitus, hypertension and hyperlipidaemia.

3. Case 85278, a 71 year-old female Singaporean, has passed away from complications due to COVID-19 infection on 23 September 2021. She tested positive for COVID-19 infection on 23 September. She had not been vaccinated against COVID-19, and had a history of cancer.

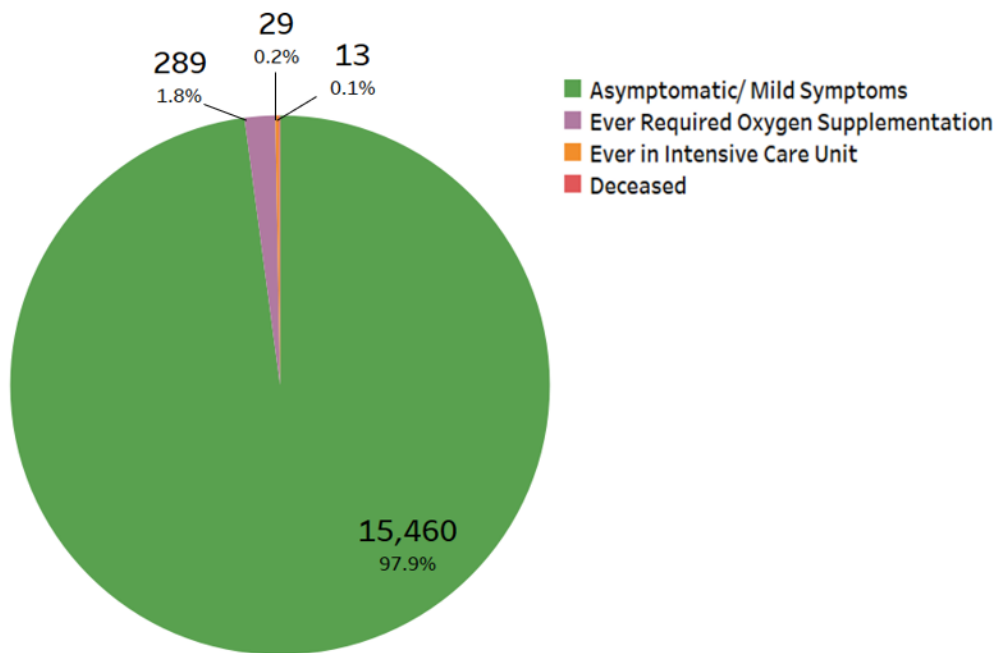
4. In total, 70 have passed away from complications due to COVID-19 infection.

Figure 1: Number of Active Cases in ICU or Requiring Oxygen Supplementation¹



5. Over the last 28 days, the percentage of local cases who were asymptomatic or had mild symptoms is 97.9%. 289 cases required oxygen supplementation and 29 had been in the ICU. Of these, 53.8% were fully vaccinated and 46.2% were unvaccinated/ partially vaccinated. 13 have died, of whom 23.1% were fully vaccinated and 76.9% were unvaccinated/ partially vaccinated.

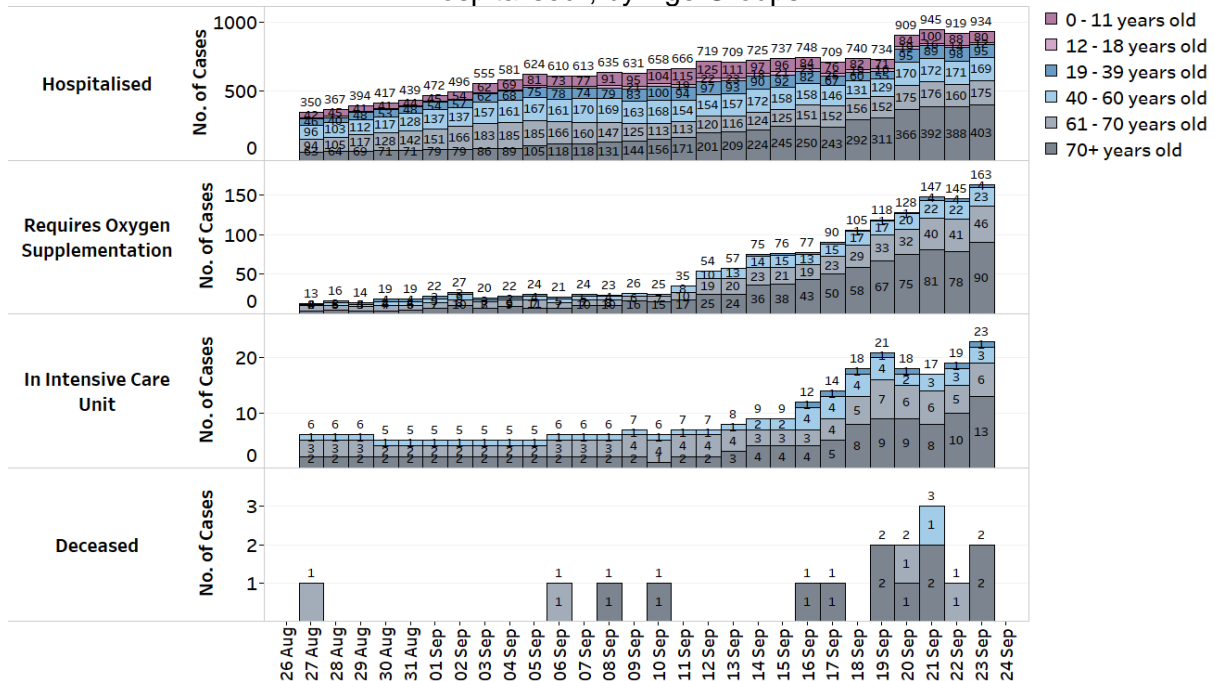
Figure 2: Local Cases in the Last 28 Days by Severity of Condition²



¹ Includes all cases who are currently hospitalised.

² Includes only new cases reported in the past 28 days.

Figure 3: Deaths and Active Cases in ICU, Requiring Oxygen Supplementation or Hospitalised¹, by Age Groups



Update on vaccination progress

6. As of 22 September 2021, 82% of our population has completed their full regimen/ received two doses of COVID-19 vaccines, and 84% has received at least one dose.

7. We have administered a total of 9,012,036 doses of COVID-19 vaccines under the national vaccination programme (Pfizer-BioNTech Comirnaty and Moderna), covering 4,584,600 individuals, with 4,463,450 individuals having completed the full vaccination regimen. In addition, 187,529 doses of other vaccines recognised in the World Health Organization’s Emergency Use Listing (WHO EUL) have been administered, covering 87,257 individuals.

Locally transmitted COVID-19 cases

8. As of 23 September 2021, 12pm, the Ministry of Health has detected a total of 1,504 new cases of COVID-19 infection in Singapore, comprising 1,218 community cases, 273 dormitory residents cases and 13 imported cases.

a) Active clusters under close monitoring

9. We are closely monitoring the clusters listed below, which have already been ringfenced through tracing, testing and isolation.

Figure 4: Large Clusters with New Cases

Cluster	New Cases	Total ³	Remarks
Maple Bear Preschool (Orchard Road)	3	12	Transmission amongst staff and students in the preschool. Of the 12 cases, 8 are students, 3 are staff, and 1 is a household member of a case.
Bukit Batok Road/ Plantation Crescent dormitory	6	23	Intra-dormitory transmission amongst residents with no evidence of spread beyond dormitory. Cases identified through testing operations.
Tampines Dormitory	7	26	Intra-dormitory transmission amongst residents with no evidence of spread beyond dormitory. Cases identified through testing operations.
My Little Campus (Yishun)	6	38	Transmission amongst staff and students in the school. Of the 38 cases, 2 are staff, 27 are students and 9 are household members of cases. New cases have already been quarantined.
SUN-DAC (Choa Chu Kang)	1	20	Transmission amongst clients and staff. Of the 20 cases, 11 are clients, 3 are staff and 6 are household members of cases. New case has already been quarantined.
Windsor Convalescent Home	1	30	Transmission amongst residents and staff. Of the 30 cases, 28 are residents and 2 are staff. New case has already been quarantined.
Woodlands Care Home	6	22	Transmission amongst residents and staff. Of the 22 cases, 21 are residents and 1 is a staff. New cases have already been quarantined.
Blue Stars Dormitory	11	170	Intra-dormitory transmission amongst residents with no evidence of spread beyond dormitory. New cases have already been quarantined.
Avery Lodge	7	168	Intra-dormitory transmission amongst residents with no evidence of spread beyond dormitory. Cases identified through pre-emptive testing. New cases have already been quarantined.
Woodlands Dormitory	4	58	Intra-dormitory transmission amongst residents with no evidence of spread beyond dormitory. New cases have already been quarantined.
Homestay Lodge	5	37	Intra-dormitory transmission amongst residents with no evidence of spread beyond dormitory. New cases have

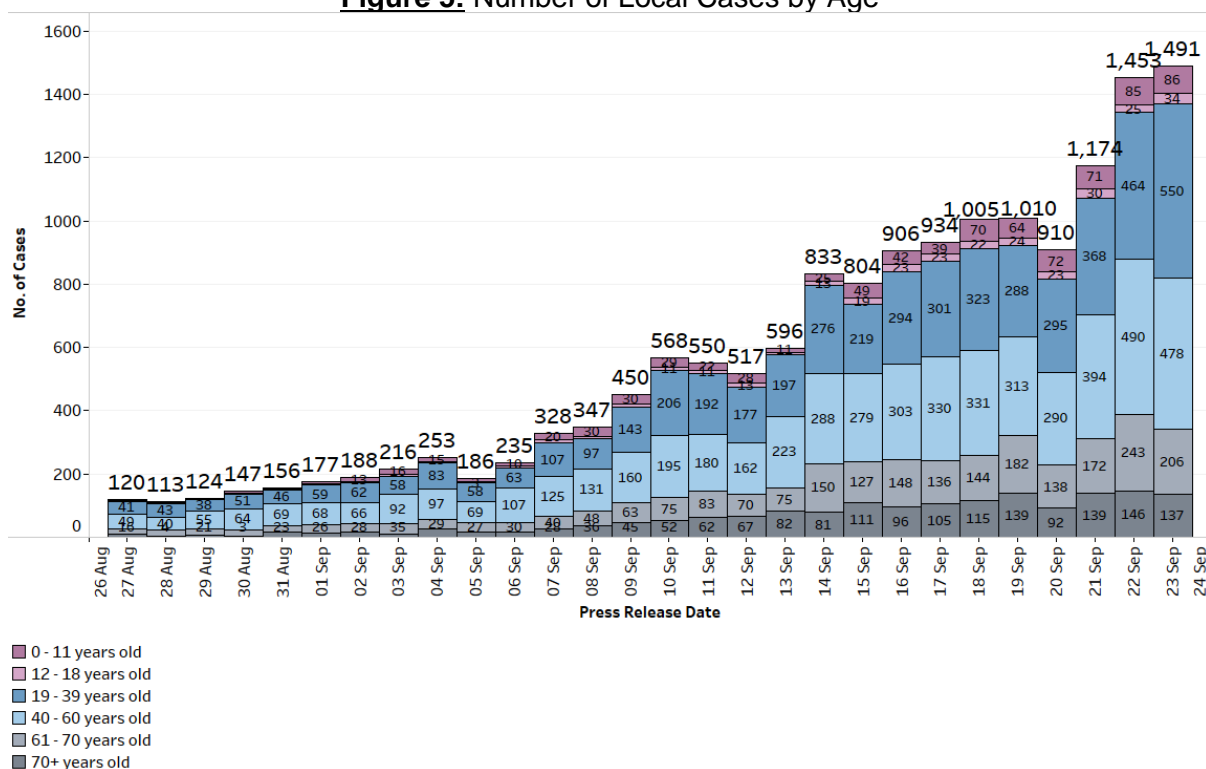
³ Includes new cases added today.

Cluster	New Cases	Total ³	Remarks
			already been quarantined.
11 Tuas Ave 10 dormitory	8	38	Intra-dormitory transmission amongst residents, detected through proactive testing. New cases have already been quarantined.
Pfizer Asia Pacific Pte Ltd	17	55	Workplace transmission, no evidence spread beyond worksite. Of the 55 cases, 52 are staff and 3 are household contacts of cases. New cases have already been quarantined.

b) Summary of trends for local cases

10. There are 1,491 new cases of locally transmitted COVID-19 infection in Singapore, with 1,218 in the community and 273 in the migrant worker dormitories. Amongst the local cases today are 343 seniors who are above 60 years.

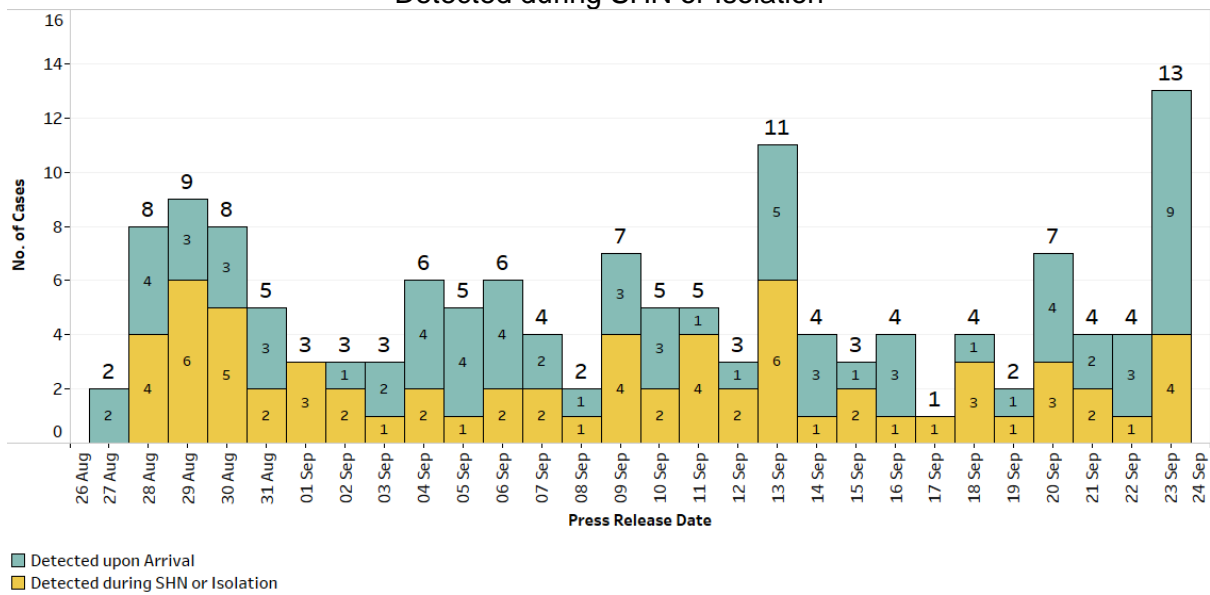
Figure 5: Number of Local Cases by Age



Summary of trends for imported cases

11. There are a total of 13 imported cases, who have already been placed on Stay-Home Notice (SHN) or isolated upon arrival in Singapore. Of these, 9 were detected upon arrival in Singapore, while 4 developed the illness during SHN or isolation.

Figure 6: Number of Imported Cases by Detected Upon Arrival/
Detected during SHN or Isolation



12. Please refer to MOH's daily Situation Report (www.moh.gov.sg/covid-19/situation-report) for details.

MINISTRY OF HEALTH
23 SEPTEMBER 2021