



FOR IMMEDIATE RELEASE

UPDATE ON LOCAL COVID-19 SITUATION

Summary of local situation

- 1,335 cases are currently warded in hospital. There are currently 197 cases of serious illness requiring oxygen supplementation, and 34 in critical condition in the intensive care unit (ICU).
- Over the last 28 days, of the 26,088 infected individuals, 98.1% had no or mild symptoms, 1.6% required oxygen supplementation, 0.2% required ICU care, and 0.1% has died.
- As of 28 September 2021, 82% of our population has completed their full regimen/ received two doses of COVID-19 vaccines, and 85% has received at least one dose.
- As of 29 September 2021, 12pm, the Ministry of Health has detected a total of 2,268 new cases of COVID-19 infection in Singapore, with 1,810 in the community, 448 in the migrant worker dormitories and 10 imported cases.

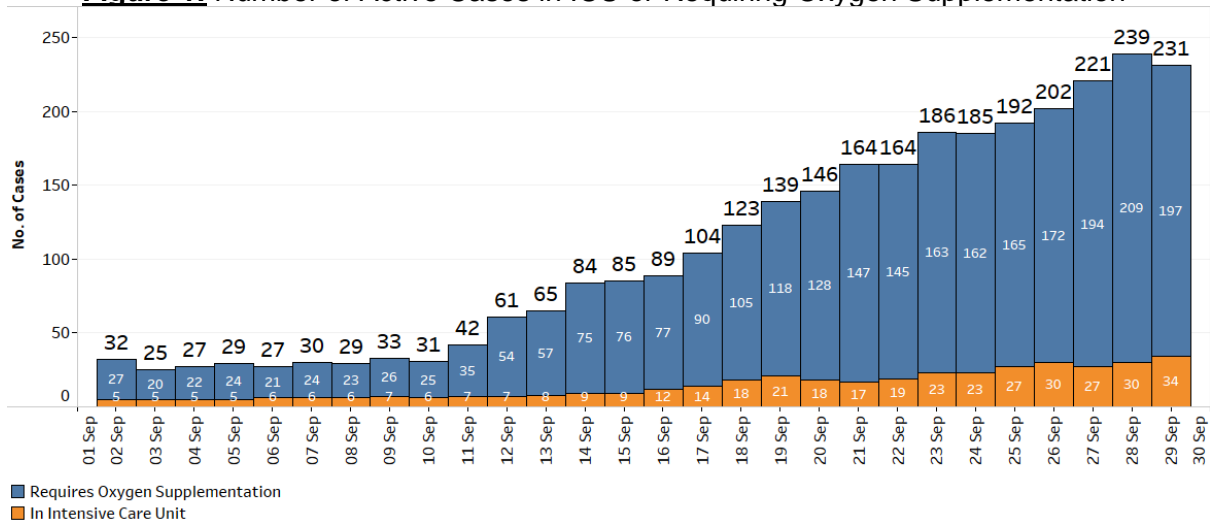
Condition of hospitalised cases

As of 29 September 2021, 12pm, 1,335 COVID-19 cases are currently warded in hospital. Most are well and under observation. There are currently 197 cases of serious illness requiring oxygen supplementation, and 34 in critical condition in the ICU. Of those who have fallen very ill, 192 are seniors above 60 years.

2. 8 more cases have passed away from complications due to COVID-19 infection.¹ Of these, 5 were male Singaporeans and 3 were female Singaporeans, aged between 72 and 90 years old. Amongst them, 6 had been unvaccinated against COVID-19, 1 had been partially vaccinated and 1 had been vaccinated. All of them had various underlying medical conditions. In total, 93 have passed away from complications due to COVID-19 infection.

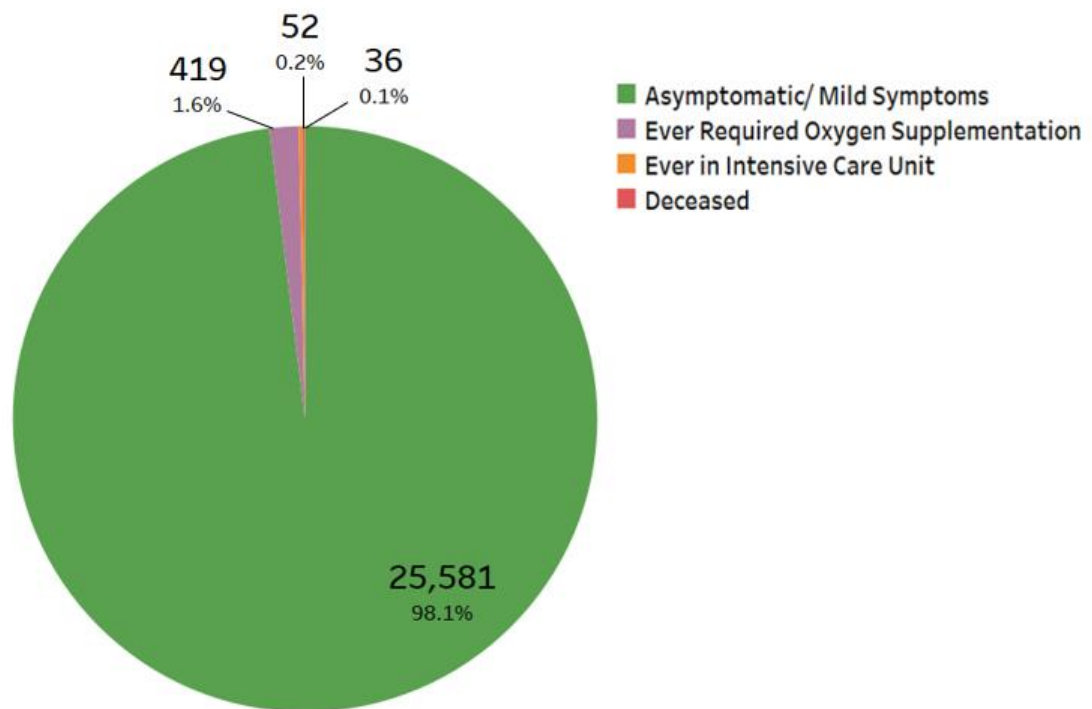
¹ Cases 81843, 81866, 82191, 83965, 84313, 86939, 87276 and 93716.

Figure 1: Number of Active Cases in ICU or Requiring Oxygen Supplementation²



3. Over the last 28 days, the percentage of local cases who were asymptomatic or had mild symptoms is 98.1%. 419 cases required oxygen supplementation and 52 had been in the ICU. Of these, 50.3% were fully vaccinated and 49.7% were unvaccinated/ partially vaccinated. 36 have died, of whom 30.6% were fully vaccinated and 69.4% were unvaccinated/ partially vaccinated.

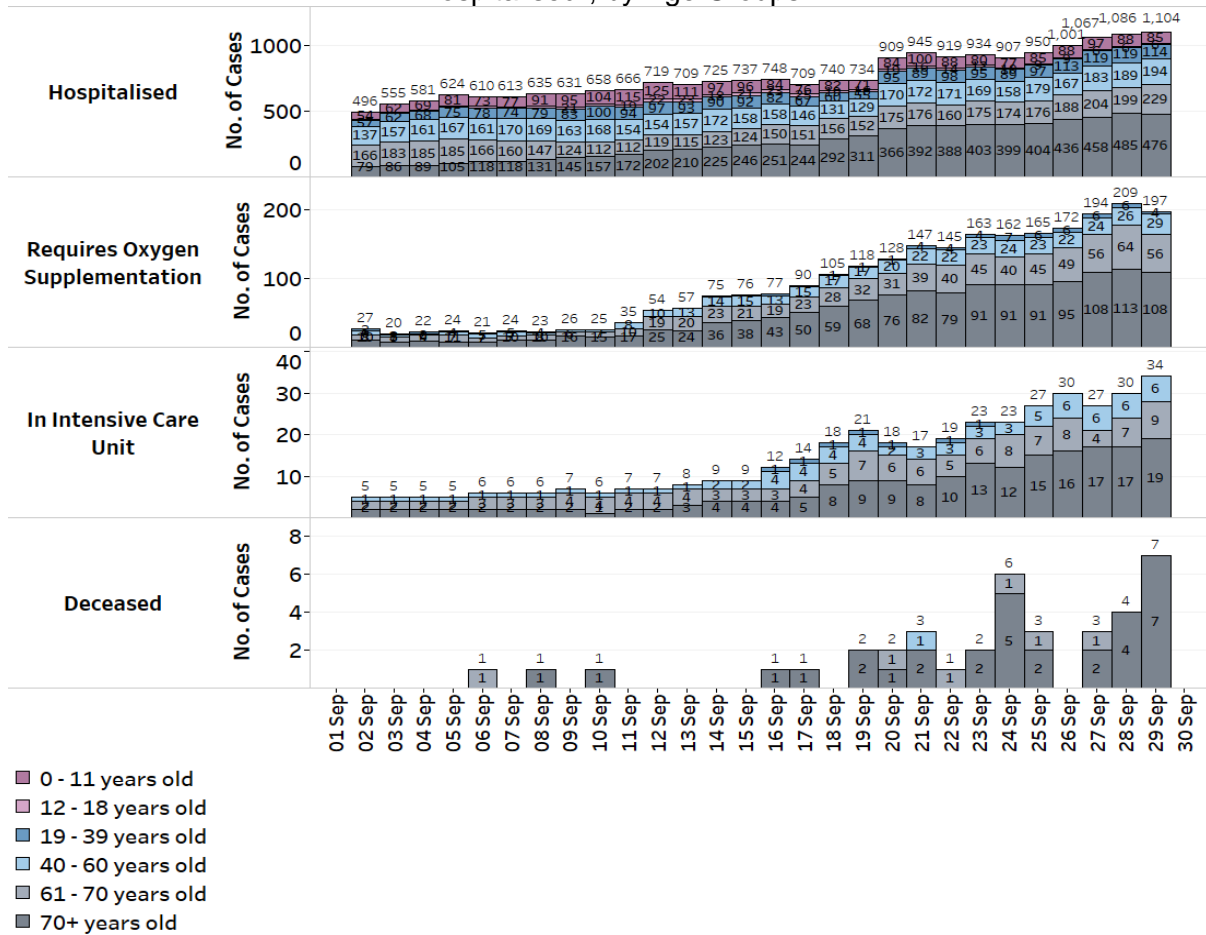
Figure 2: Local Cases in the Last 28 Days by Severity of Condition³



² Includes all cases who are currently hospitalised.

³ Includes only new cases reported in the past 28 days.

Figure 3: Deaths and Active Cases in ICU, Requiring Oxygen Supplementation or Hospitalised², by Age Groups

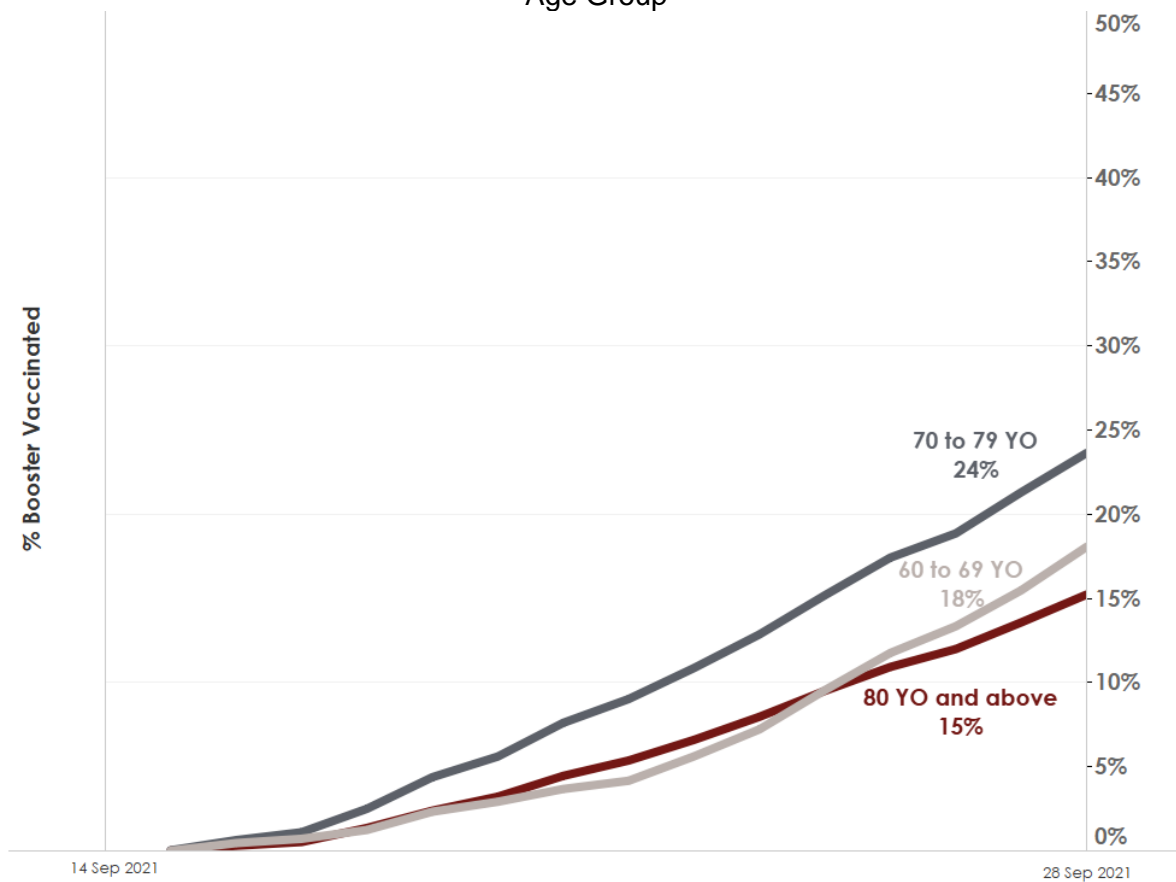


Update on vaccination progress

4. As of 28 September 2021, 82% of our population has completed their full regimen/ received two doses of COVID-19 vaccines, and 85% has received at least one dose.

5. We have administered a total of 9,157,529 doses of COVID-19 vaccines under the national vaccination programme (Pfizer-BioNTech Comirnaty and Moderna), including 196,211 booster doses. To date, we have invited about 500,000 eligible seniors to receive their booster doses. In total, 4,593,717 individuals have received at least one dose of vaccine under the national vaccination programme, and 4,482,167 individuals having completed the full vaccination regimen. In addition, 195,791 doses of other vaccines recognised in the World Health Organization’s Emergency Use Listing (WHO EUL) have been administered, covering 98,772 individuals.

Figure 4: Percentage of Individuals Who Received Booster Dose of COVID-19 Vaccine by Age Group



Locally transmitted COVID-19 cases

6. As of 29 September 2021, 12pm, the Ministry of Health has detected a total of 2,268 new cases of COVID-19 infection in Singapore, comprising 1,810 community cases, 448 dormitory residents cases and 10 imported cases.

a) Active clusters under close monitoring

7. We are closely monitoring the clusters listed below, which have already been ringfenced through tracing, testing and isolation.

Figure 5: Large Clusters with New Cases

Cluster	New Cases	Total ⁴	Remarks
Tuas South Dormitory	7	22	Intra-dormitory transmission amongst residents with no evidence of spread beyond dormitory.
Kian Teck Dormitory	10	60	Intra-dormitory transmission amongst residents with no evidence of spread beyond dormitory.

⁴ Includes new cases added today.

Cluster	New Cases	Total ⁴	Remarks
Kian Teck Hostel	6	49	Intra-dormitory transmission amongst residents with no evidence of spread beyond dormitory.
Man Fatt Lam Elderly Joy Daycare Centre	3	16	Transmission amongst clients and staff. Of the 16 cases, 13 are clients, 1 is a staff, and 2 are household members of cases. Centre has been closed since 25 September.
Pasir Panjang Wholesale Centre	2	127	Transmission amongst workers and trade visitors. Of the 127 cases, 115 are workers at the market, 4 are trade visitors and 8 are household members of cases. New cases have already been quarantined.
My Little Campus (Yishun)	2	50	Transmission amongst staff and students. Of the 50 cases, 3 are staff, 27 are students and 20 are household members of cases. New cases have already been quarantined.
LearnJoy Education Centre	1	19	Transmission amongst staff and students. Of the 19 cases, 2 are staff, 15 are students and 2 are household members of cases. New case has already been quarantined.
Avery Lodge	21	277	Intra-dormitory transmission amongst residents with no evidence of spread beyond dormitory.
Tampines Dormitory	12	104	Intra-dormitory transmission amongst residents with no evidence of spread beyond dormitory.
Blue Stars Dormitory	4	405	Intra-dormitory transmission amongst residents with no evidence of spread beyond dormitory. New cases have already been quarantined.
Woodlands Dormitory	50	314	Intra-dormitory transmission amongst residents with no evidence of spread beyond dormitory.
North Coast Lodge	37	350	Intra-dormitory transmission amongst residents with no evidence of spread beyond dormitory.

b) Summary of trends for local cases

8. There are 2,258 new cases of locally transmitted COVID-19 infection in Singapore, with 1,810 in the community and 448 in the migrant worker dormitories. Amongst the local cases today are 510 seniors who are above 60 years.

Figure 6: Number of Community Cases by Age

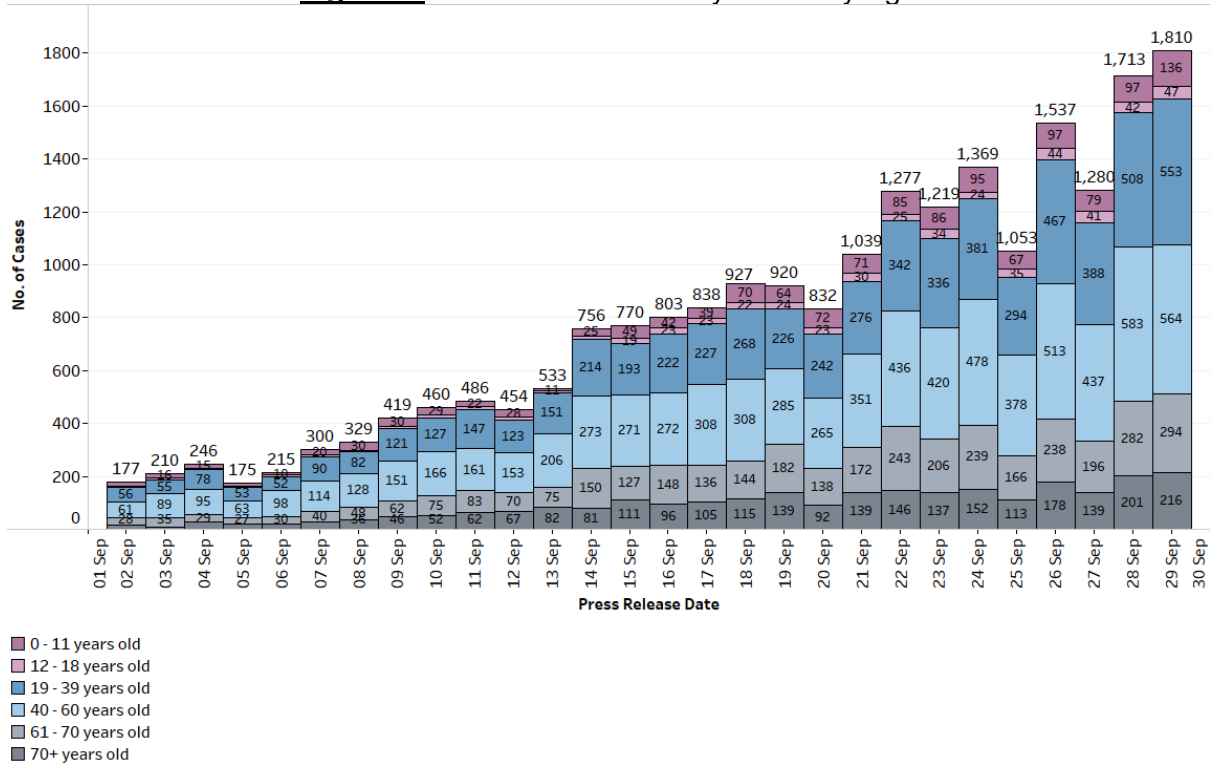
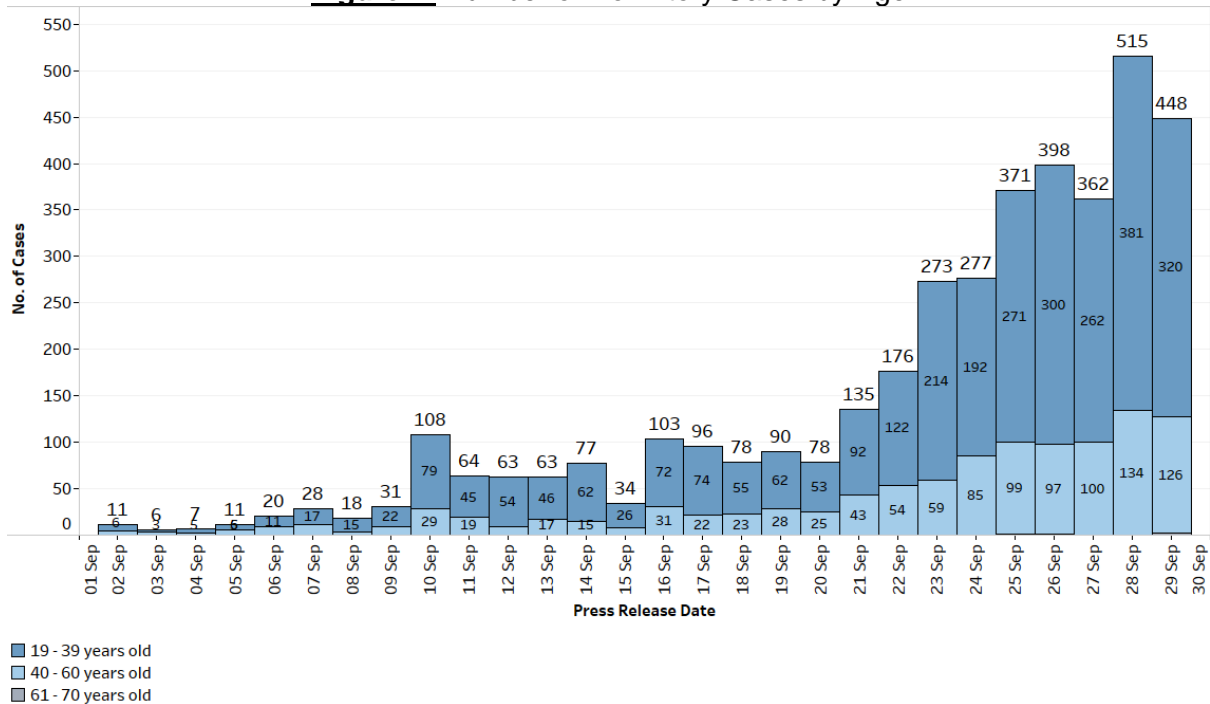


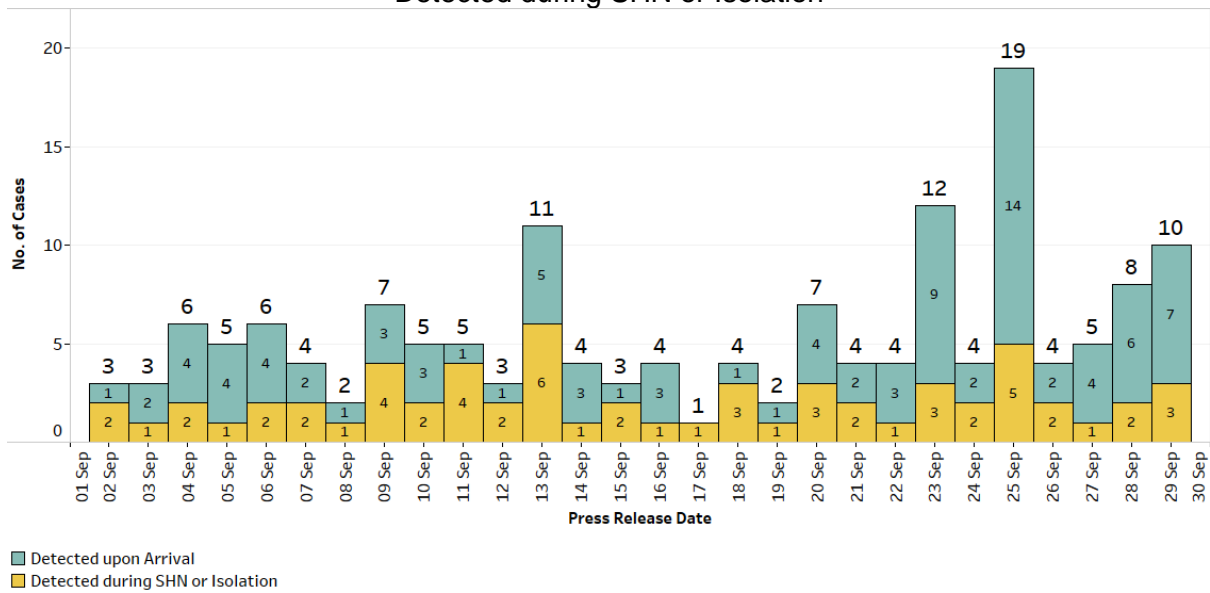
Figure 7: Number of Dormitory Cases by Age



Summary of trends for imported cases

9. There are a total of 10 imported cases, who have already been placed on Stay-Home Notice (SHN) or isolated upon arrival in Singapore. Of these, 7 were detected upon arrival in Singapore, while 3 developed the illness during SHN or isolation.

Figure 8: Number of Imported Cases by Detected Upon Arrival/
Detected during SHN or Isolation



10. Please refer to MOH’s daily Situation Report (www.moh.gov.sg/covid-19/situation-report) for details.

MINISTRY OF HEALTH
29 SEPTEMBER 2021