



FOR IMMEDIATE RELEASE

## UPDATE ON LOCAL COVID-19 SITUATION AND VACCINATION PROGRESS

### Summary of local situation

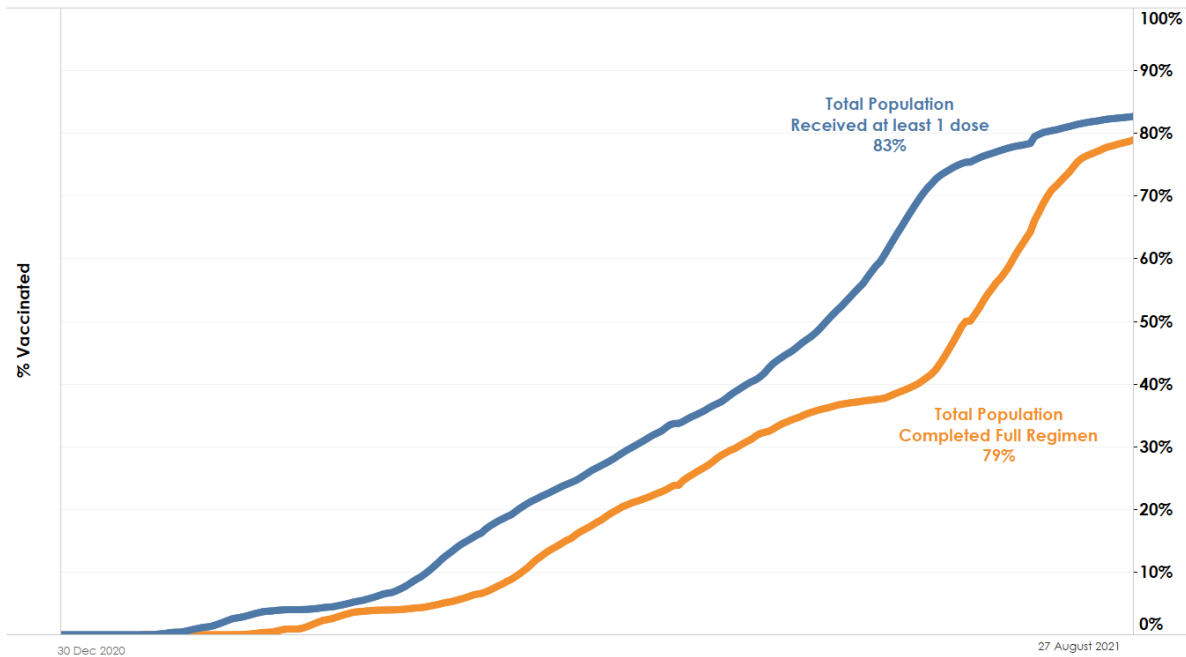
- As of 28 August 2021, 12pm, the Ministry of Health (MOH) has confirmed and verified that there are 113 cases of locally transmitted COVID-19 infection and 8 imported cases.
- 389 cases are currently warded in hospital. Most are well and under observation. There are currently 16 cases of serious illness requiring oxygen supplementation, and 6 in critical condition in the intensive care unit (ICU).
- Over the last 28 days, the percentage of unvaccinated who became severely ill or died is 9.2%, while that for the fully vaccinated is 1.2%.
- As of 27 August 2021, 79% of our population has completed their full regimen/ received two doses of COVID-19 vaccines, and 83% has received at least one dose.

### Update on vaccination progress

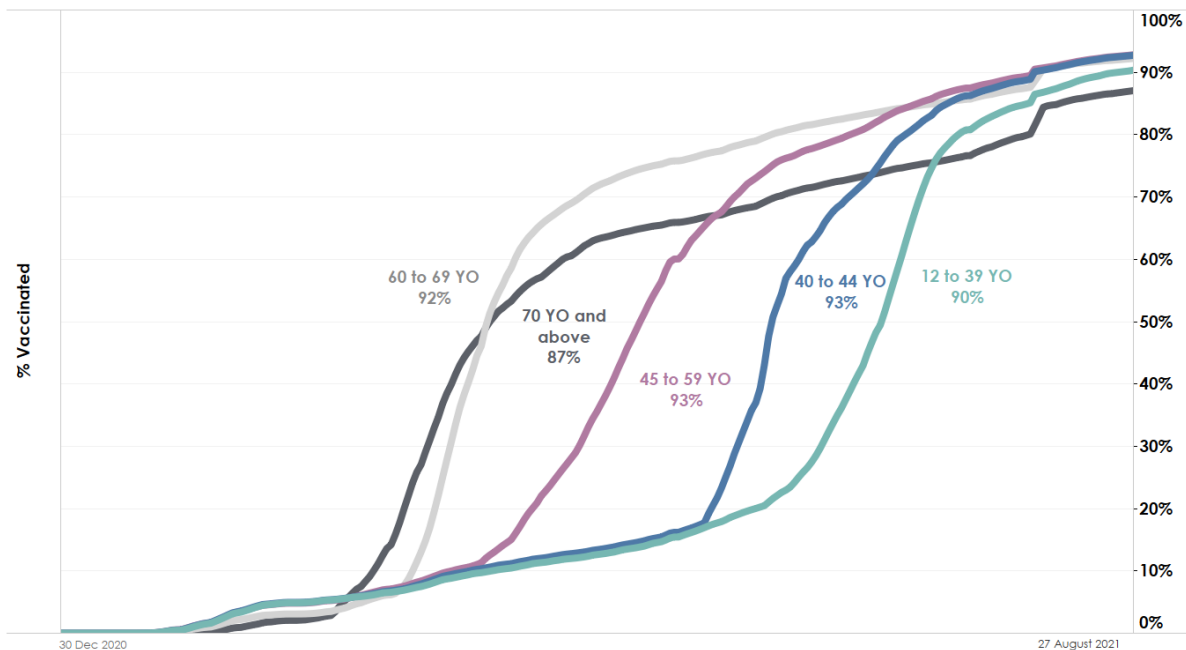
As of 27 August 2021, we have administered a total of 8,667,278 doses of COVID-19 vaccines under the national vaccination programme (Pfizer-BioNTech Comirnaty and Moderna), covering 4,500,430 individuals, with 4,291,659 individuals having completed the full vaccination regimen.

2. In addition, 164,336 doses of other vaccines recognised in the World Health Organization's Emergency Use Listing (WHO EUL) have been administered as of 27 August 2021, covering 85,489 individuals. In total, 79% of our population has completed their full regimen/ received two doses of COVID-19 vaccines, and 83% has received at least one dose.

**Figure 1:** Percentage of Total Population who Received At Least First Dose<sup>1</sup> and Completed Full Regimen<sup>2</sup> of NVP and WHO EUL Vaccines<sup>3</sup>



**Figure 2:** Percentage of Vaccinated Individuals who Received At Least First Dose of NVP and WHO EUL Vaccines by Age Group

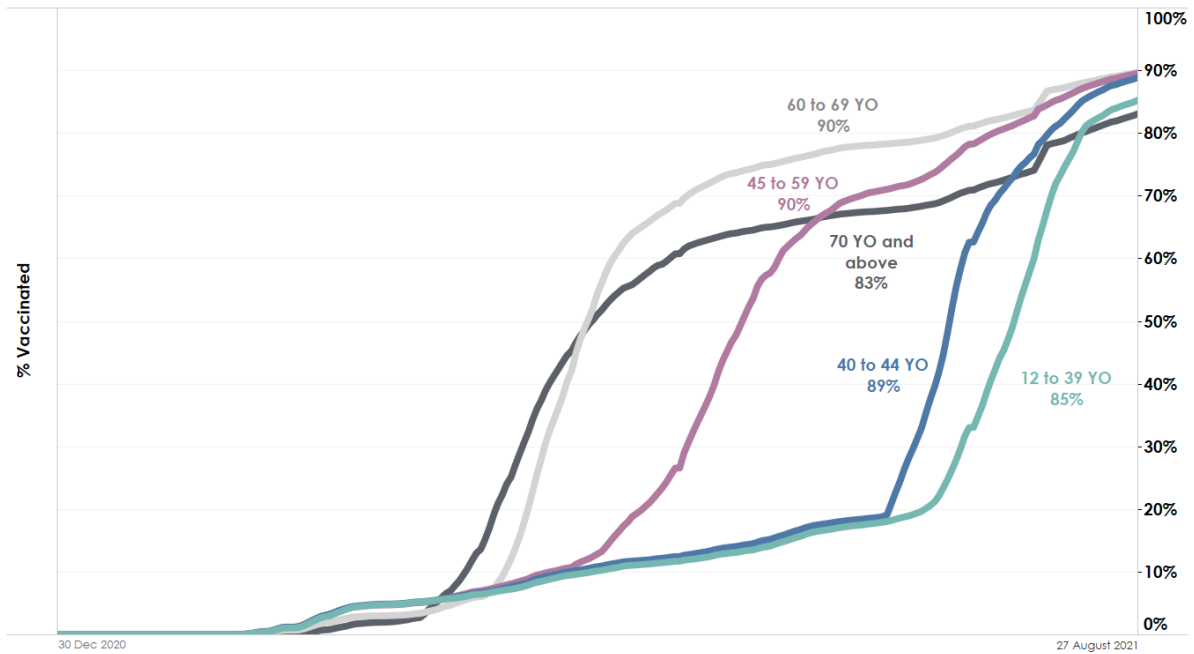


<sup>1</sup> Based on National Immunisation Registry data.

<sup>2</sup> Full regimen refers to individuals who have received both doses of the vaccine or one dose for vaccinated recovered individuals.

<sup>3</sup> Other vaccines recognised in the WHO EUL account for about 2% of the total population who received at least 1 dose and about 1% of total population who completed the full regimen.

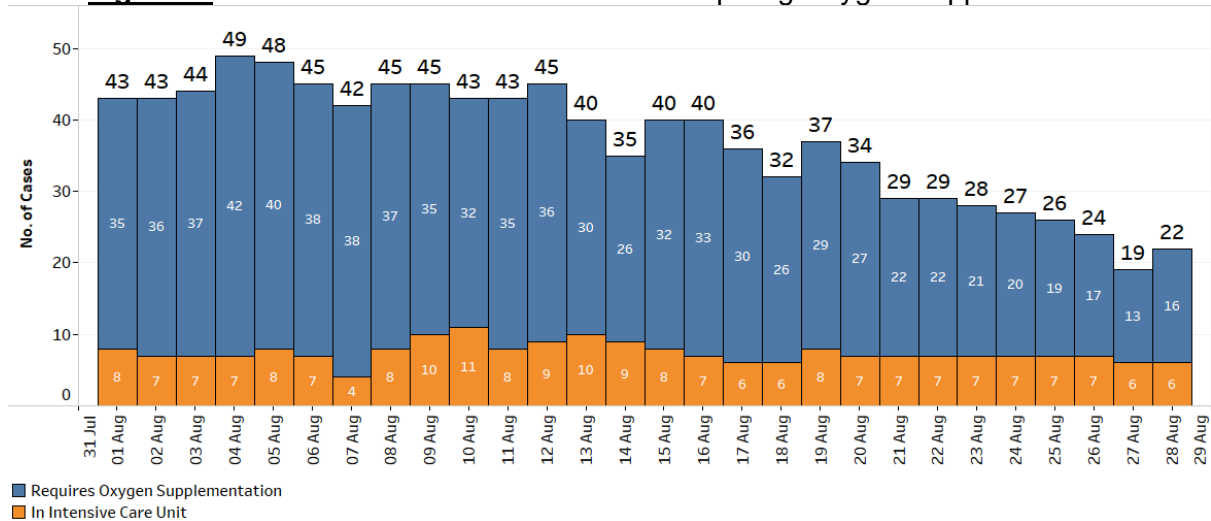
**Figure 3:** Percentage of Individuals who Completed Full Regimen of NVP and WHO EUL Vaccines by Age Group



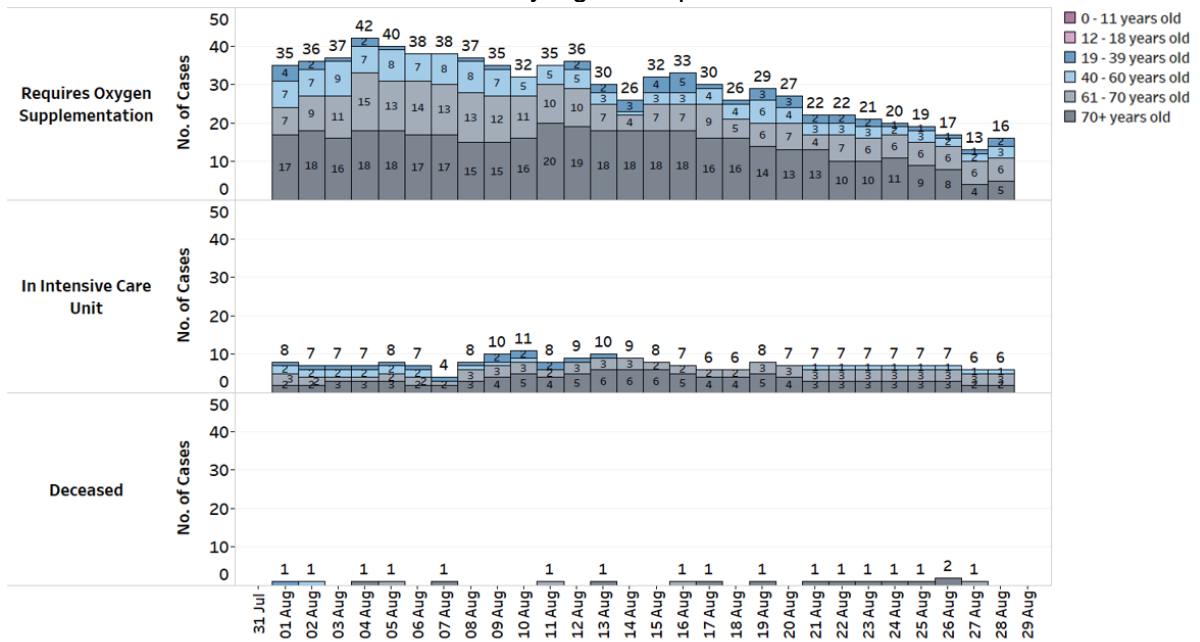
### Condition of hospitalised cases

3. 389 cases are currently warded in hospital. There are currently 16 cases of serious illness requiring oxygen supplementation, and 6 in critical condition in the ICU. Of those who have fallen very ill, 16 are seniors above 60 years, of whom 11 are completely unvaccinated or partially vaccinated.

**Figure 4:** Number of Active Cases in ICU or Requiring Oxygen Supplementation

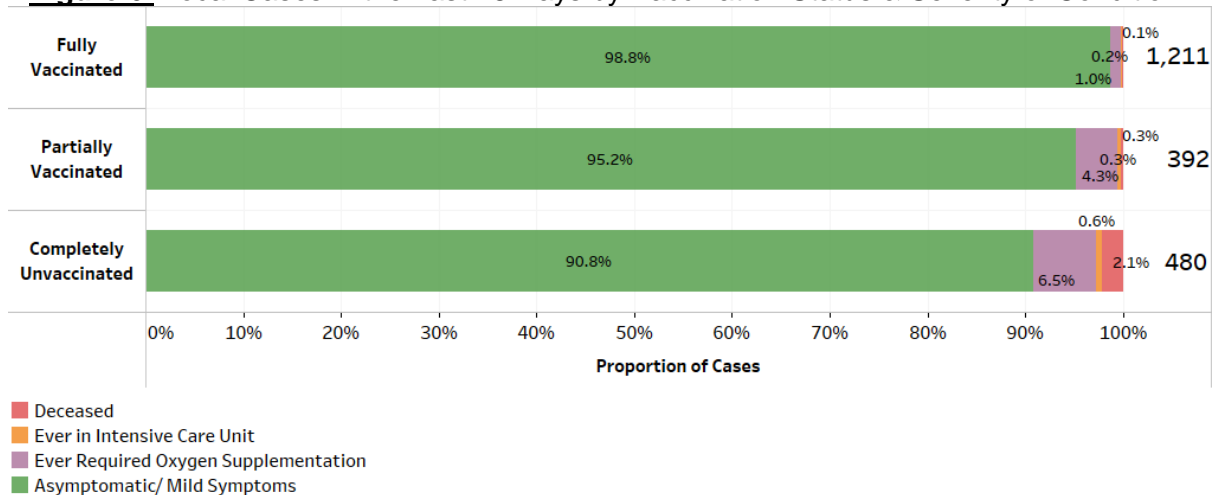


**Figure 5:** Deaths and Active Cases in ICU or Requiring Oxygen Supplementation, by Age Group



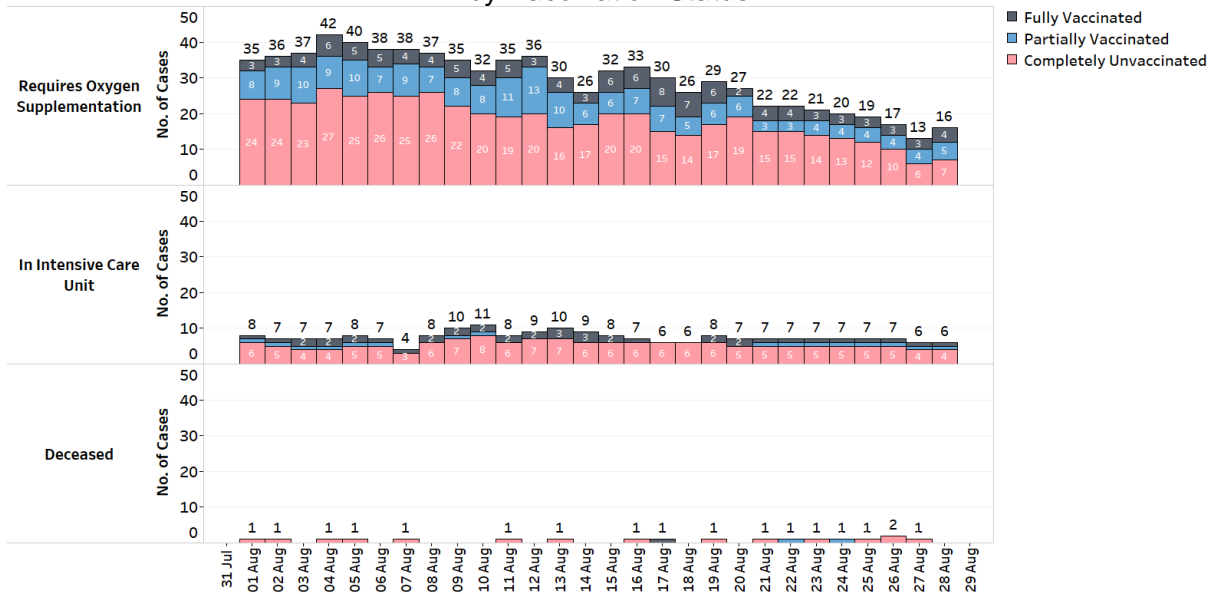
4. There is continuing evidence that almost all fully-vaccinated individuals do not suffer serious disease when infected, unless if they had underlying medical conditions that made them more susceptible. Over the last 28 days, the percentage of unvaccinated who became severely ill or died is 9.2%, while that for the fully vaccinated is 1.2%.

**Figure 6:** Local Cases in the Last 28 Days by Vaccination Status & Severity of Condition<sup>4</sup>



<sup>4</sup> Fully vaccinated - more than 14 days after completing vaccination regimen (both doses of the vaccine or one dose for recovered individuals). Partially vaccinated – received 1 dose of 2-dose vaccine or COVID-positive within 14 days of completing vaccination regimen.

**Figure 7:** Deaths and Active Cases in ICU or Requiring Oxygen Supplementation, by Vaccination Status

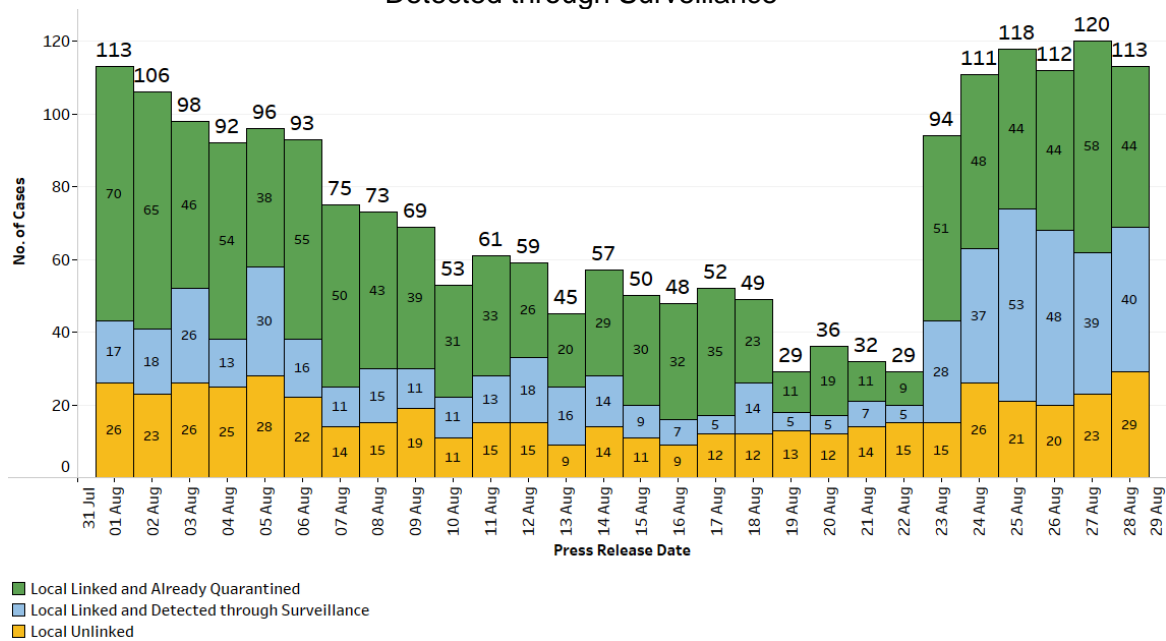


**Locally transmitted COVID-19 cases**

5. There are 113 cases of locally transmitted COVID-19 infection today. 25 of the cases are linked to the Bugis Junction cluster. Of the remaining 88 cases, 32 are linked to previous cases, and have already been placed on quarantine. 27 are linked to previous cases and were detected through surveillance. 29 are currently unlinked.

6. There are 8 imported cases, who have already been placed on Stay-Home Notice (SHN) or isolated upon arrival in Singapore. In total, there are 121 new cases of COVID-19 infection in Singapore today.

**Figure 8:** Number of Local Unlinked Cases and Linked Cases by Already Quarantined/ Detected through Surveillance<sup>5</sup>

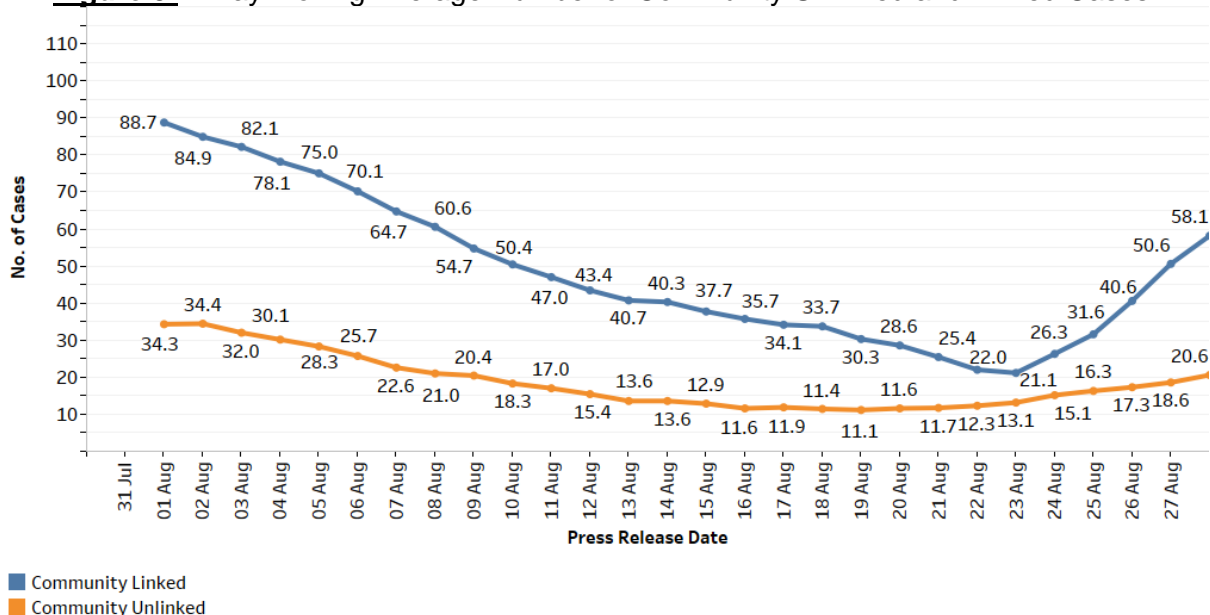


<sup>5</sup> Incorporates re-classifications of earlier reported cases.

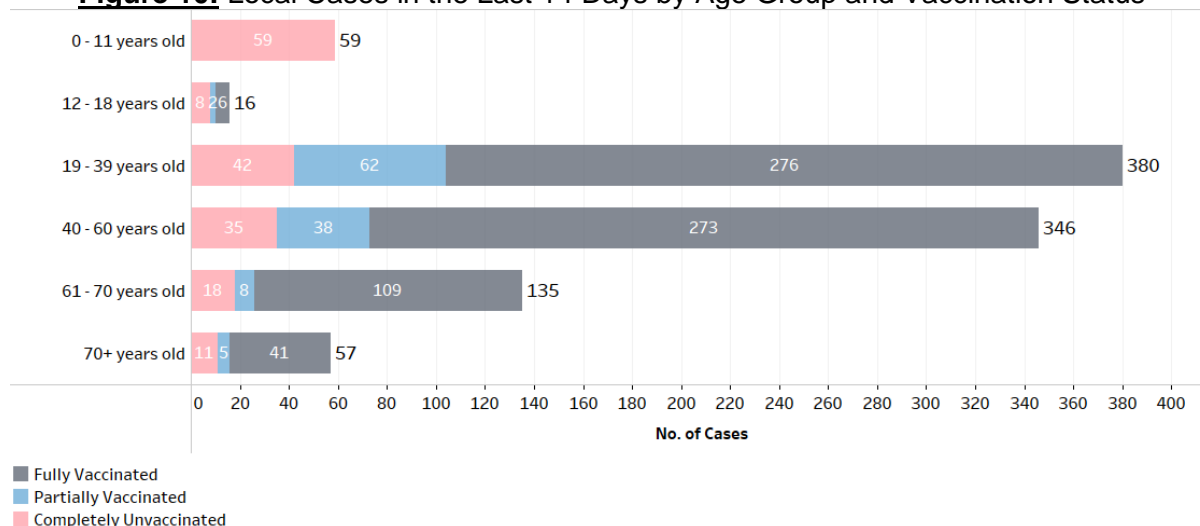
## Summary of trends for local cases

7. Overall, the number of new cases in the community has increased from 260 cases in the week before to 551 cases in the past week. The number of unlinked cases in the community has also increased from 82 cases in the week before to 144 cases in the past week. The 7-day moving average number of all linked community cases and all unlinked community cases are 58.1 and 20.6 respectively.

**Figure 9:** 7 Day Moving Average Number of Community Unlinked and Linked Cases<sup>5</sup>



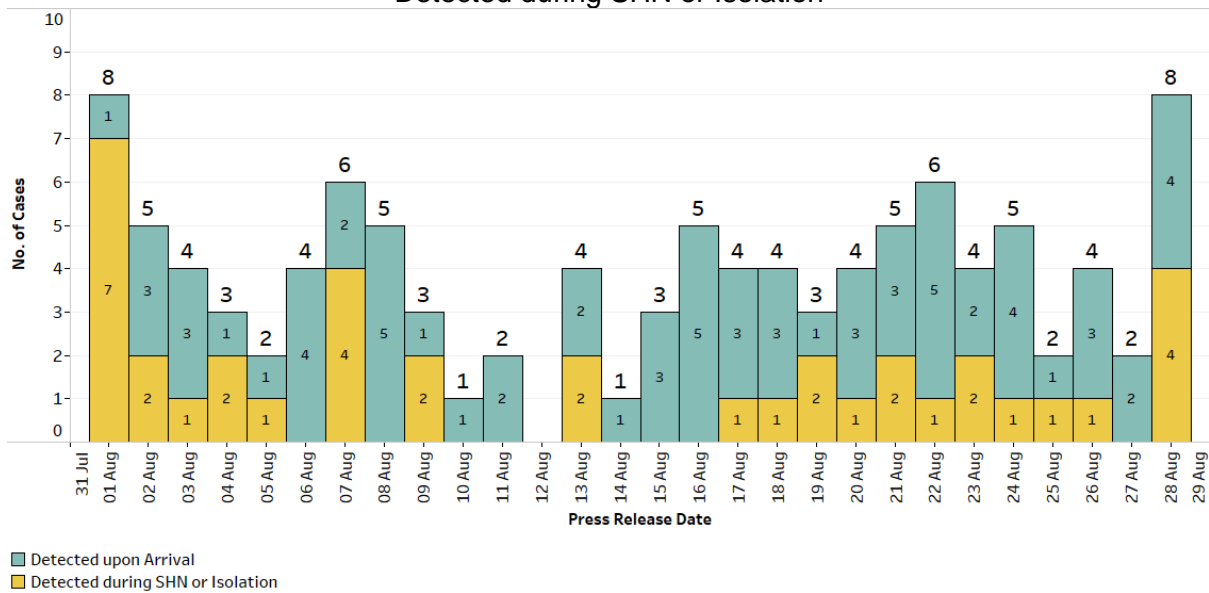
**Figure 10:** Local Cases in the Last 14 Days by Age Group and Vaccination Status



## Summary of trends for imported cases

8. There are a total of 8 imported cases. Of these, 4 were detected upon arrival in Singapore, while 4 developed the illness during SHN or isolation.

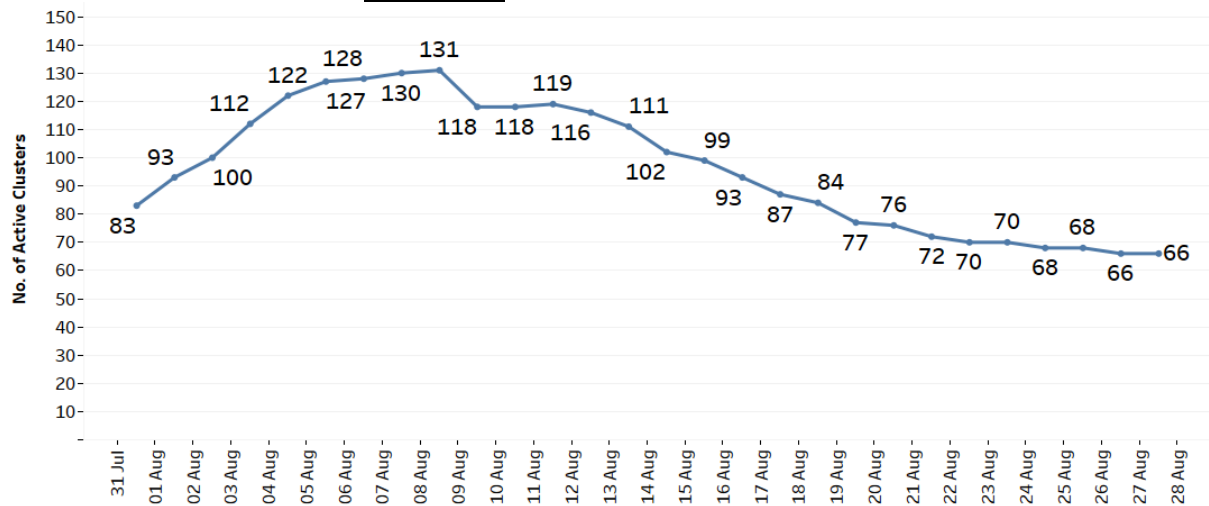
**Figure 11:** Number of Imported Cases by Detected Upon Arrival/  
Detected during SHN or Isolation



**Active clusters under monitoring**

9. There are 2 new clusters today, and 2 clusters have closed. There are currently 66 clusters, ranging between 3 and 1,155 infections.

**Figure 12:** Number of Active Clusters



**Figure 13:** List of Active Clusters

Cluster	New Cases	Total <sup>6</sup>
Jurong East Bus Interchange staff ( <i>new cluster</i> )	11	14
Homestay Lodge ( <i>new cluster</i> )	3	5
Tuas South Lodge	1	5

<sup>6</sup> Includes new cases added today.

Cluster	New Cases	Total <sup>6</sup>
Clementi Bus Interchange staff	1	8
Toa Payoh Bus Interchange staff	3	33
Punggol Bus Interchange staff	4	21
Bugis Junction	25	176
Selarang Halfway House	3	30
North Coast Lodge	8	139
Sengkang Bus Interchange staff	1	24
Westlite Juniper Dormitory	1	72
Bangkit 257 Coffee House (257 Bangkit Road)	1	4
Case 68669	0	4
Bishan Bus Interchange staff	0	24
Case 68238	0	5
Giant (683 Hougang Avenue 8)	0	9
SAFRA Tampines	0	19
Superland Pre-School (Kreta Ayer Community Centre)	0	18
FairPrice (Kallang Bahru)	0	6
My First Skool (54 Chin Swee Road)	0	40
Case 68646	0	4
Case 68647	0	5
Nimble/Knead	0	8
Case 67343	0	42
Case 67220	0	32
Case 68431	0	7
43 Sungei Kadut Loop dormitory	0	14
Chee Song Frozen Foods	0	8
North Bridge Road Market & Food Centre	0	16
Kian Hiap Construction	0	17
Sin Ming 23 Coffee Shop	0	17
Marina Bay Sands Casino	0	66
KTV lounges/clubs	0	253
Case 67302	0	3
Case 68131	0	4
Zuellig Pharma	0	12
Case 66567	0	34
Westlite Mandai Dormitory	0	14
Case 66838	0	4
Jurong Fishery Port/ Hong Lim Market & Food Centre	0	1,155
Case 67045	0	3
Case 67353	0	5
NKF Dialysis Centre (Sakyadhita)	0	9
Case 67982	0	7
Case 67981	0	3



Cluster	New Cases	Total <sup>6</sup>
Samy's Curry Restaurant	0	61
Punggol Primary School	0	17
Elsie's Kitchen	0	6
Jem	0	6
CHIJ Katong Convent	0	10
Case 66449	0	21
Case 67704	0	4
Case 66244	0	8
Case 67738	0	3
Case 67436	0	7
Changi General Hospital	0	4
Case 66764	0	4
Case 67276	0	7
Case 66996	0	3
Case 67051	0	5
Case 66922	0	3
Case 67236	0	3
Institution S2 Selarang Park Complex	0	8
Case 67078	0	3
Seng Leong Steel (Ent) Pte Ltd	0	5
Yishun Community Hospital	0	4

10. Please refer to MOH's daily Situation Report ([www.moh.gov.sg/covid-19/situation-report](http://www.moh.gov.sg/covid-19/situation-report)) for details.

**MINISTRY OF HEALTH**  
**28 AUGUST 2021**

---