



FOR IMMEDIATE RELEASE

UPDATE ON LOCAL COVID-19 SITUATION AND VACCINATION PROGRESS

Summary of local situation

- As of 6 September 2021, 12pm, the Ministry of Health (MOH) has confirmed and verified that there are 235 cases of locally transmitted COVID-19 infection and 6 imported cases.
- 637 cases are currently warded in hospital. Most are well and under observation. There are currently 21 cases of serious illness requiring oxygen supplementation, and 6 in critical condition in the intensive care unit (ICU).
- Over the last 28 days, the percentage of unvaccinated who became severely ill or died is 6.6%, while that for the fully vaccinated is 0.9%.
- As of 5 September 2021, 81% of our population has completed their full regimen/ received two doses of COVID-19 vaccines, and 83% has received at least one dose.

Update on vaccination progress

As of 5 September 2021, we have administered a total of 8,794,457 doses of COVID-19 vaccines under the national vaccination programme (Pfizer-BioNTech Comirnaty and Moderna), covering 4,533,475 individuals, with 4,378,769 individuals having completed the full vaccination regimen.

2. In addition, 170,635 doses of other vaccines recognised in the World Health Organization's Emergency Use Listing (WHO EUL) have been administered as of 5 September 2021, covering 86,101 individuals. In total, 81% of our population has completed their full regimen/ received two doses of COVID-19 vaccines, and 83% has received at least one dose.

Figure 1: Percentage of Total Population who Received At Least First Dose¹ and Completed Full Regimen² of NVP and WHO EUL Vaccines³

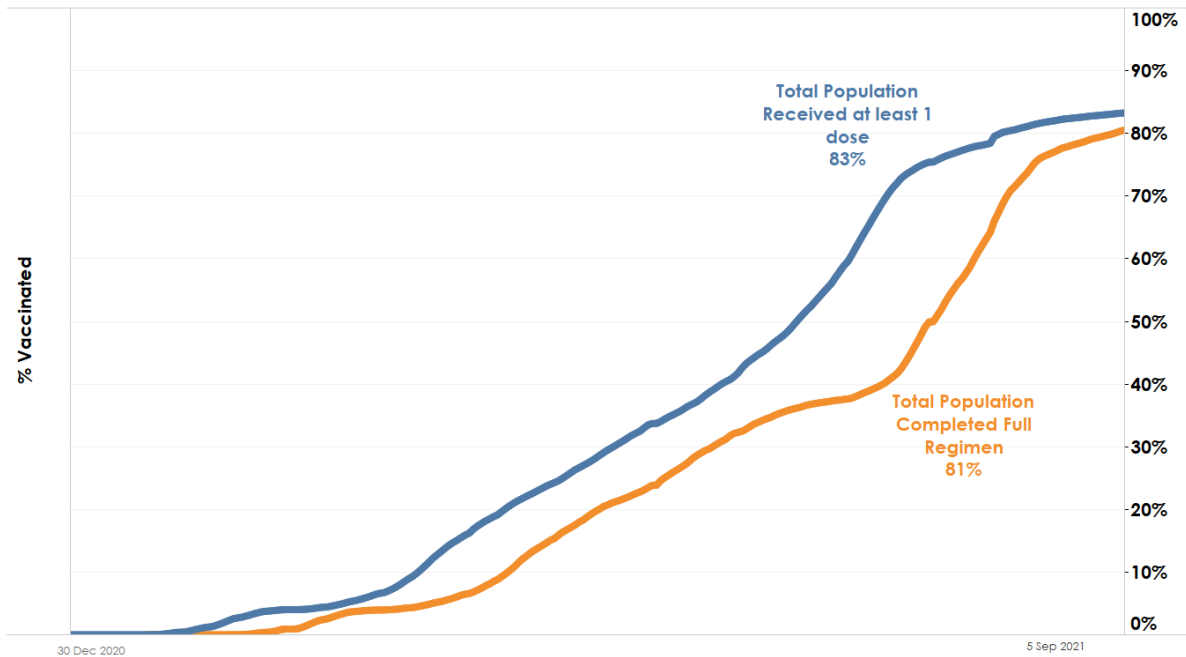
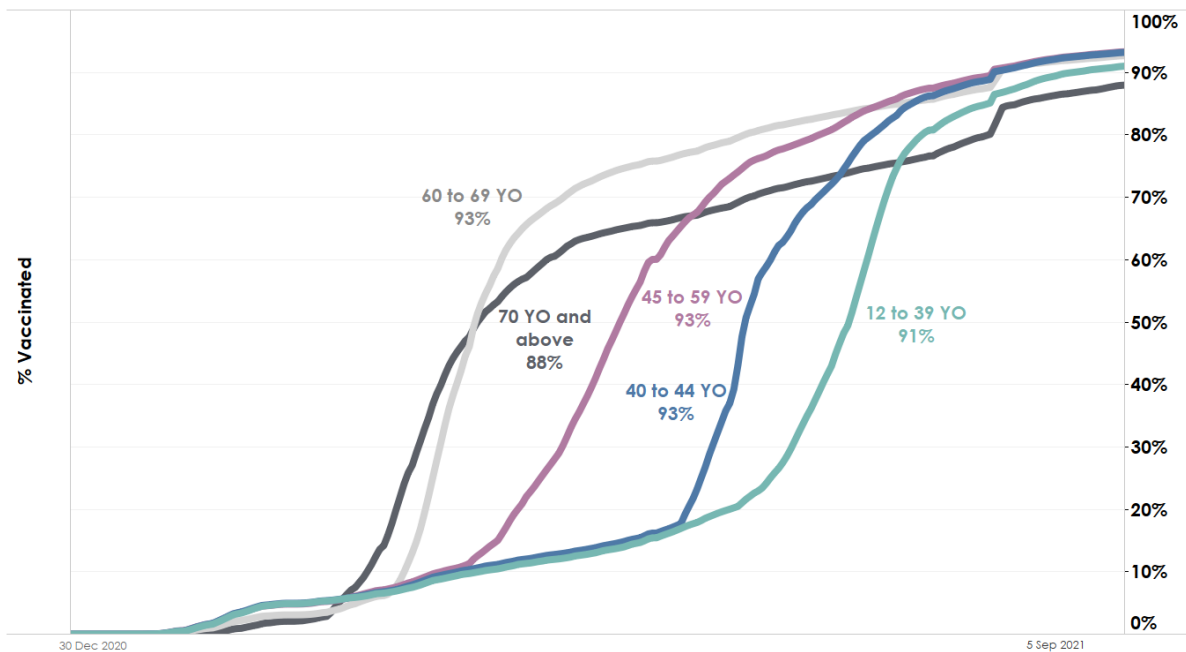


Figure 2: Percentage of Vaccinated Individuals who Received At Least First Dose of NVP and WHO EUL Vaccines by Age Group

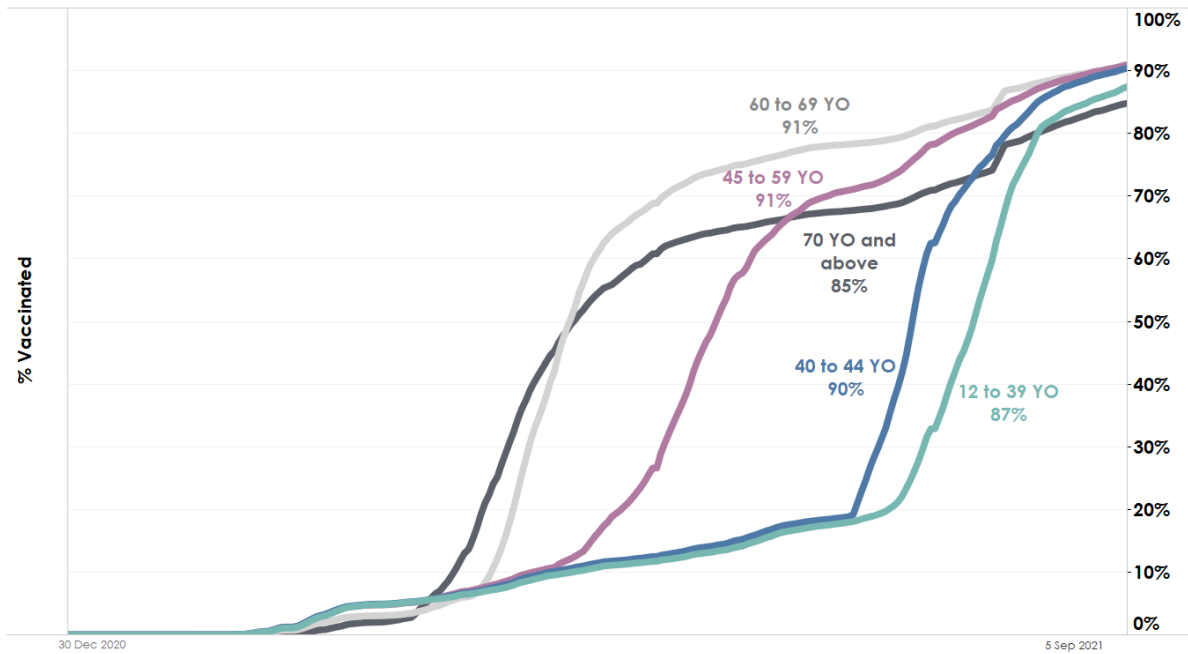


¹ Based on National Immunisation Registry data.

² Full regimen refers to individuals who have received both doses of the vaccine or one dose for vaccinated recovered individuals.

³ Other vaccines recognised in the WHO EUL account for about 2% of the total population who received at least 1 dose and about 1% of total population who completed the full regimen.

Figure 3: Percentage of Individuals who Completed Full Regimen of NVP and WHO EUL Vaccines by Age Group



Condition of hospitalised cases

3. 637 cases are currently warded in hospital. There are currently 21 cases of serious illness requiring oxygen supplementation, and 6 in critical condition in the ICU. Of those who have fallen very ill, 19 are seniors above 60 years, of whom 12 are completely unvaccinated or partially vaccinated.

Figure 4: Number of Active Cases in ICU or Requiring Oxygen Supplementation

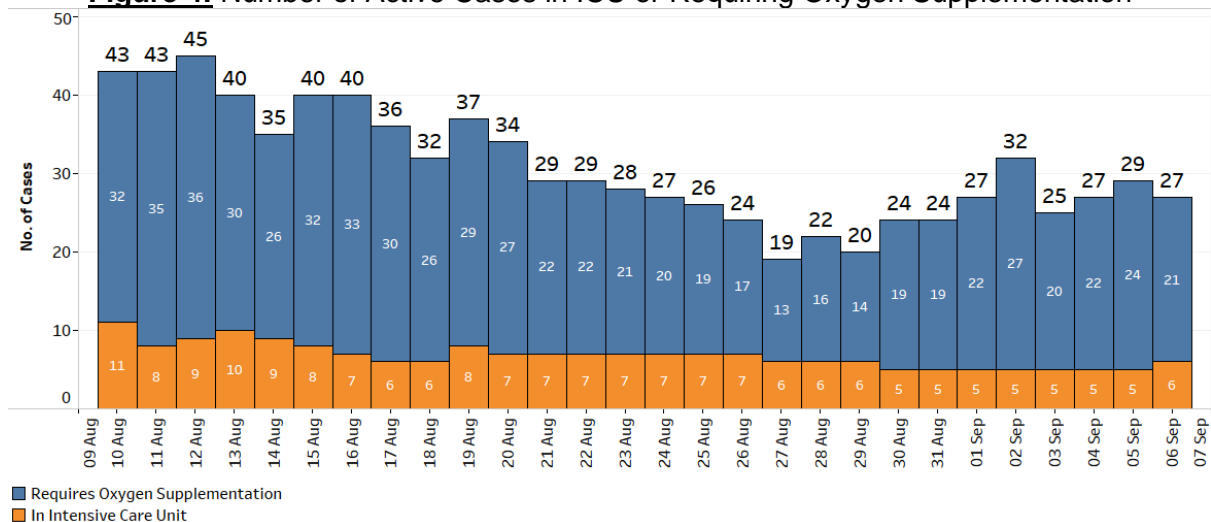
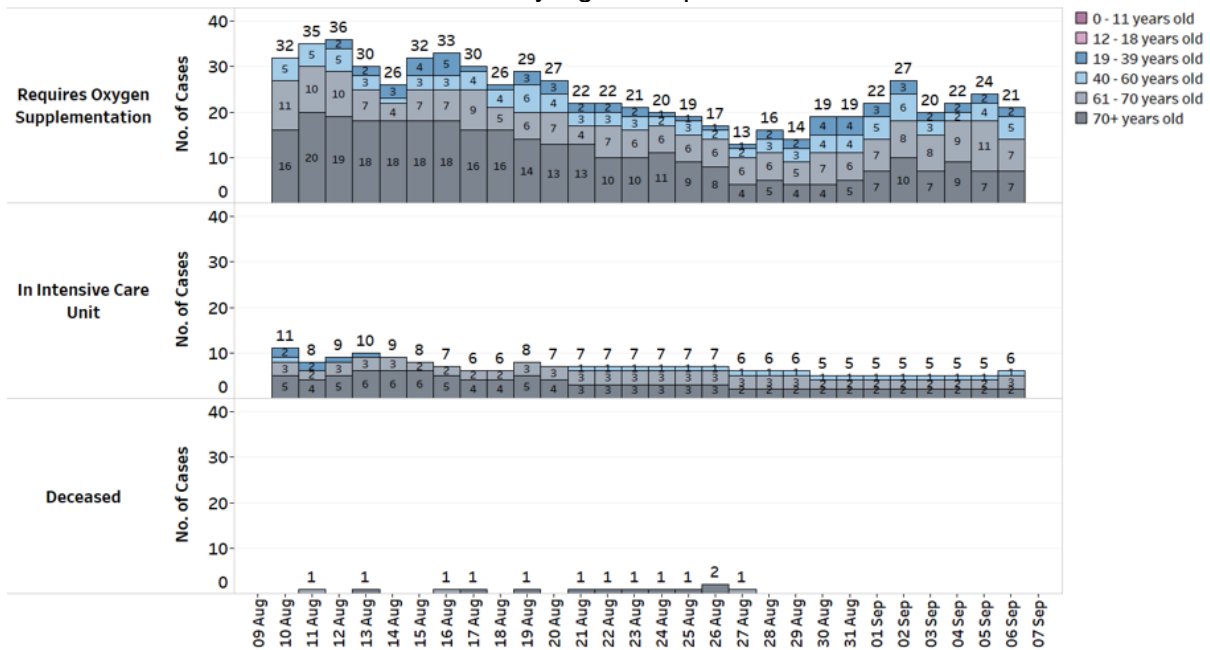
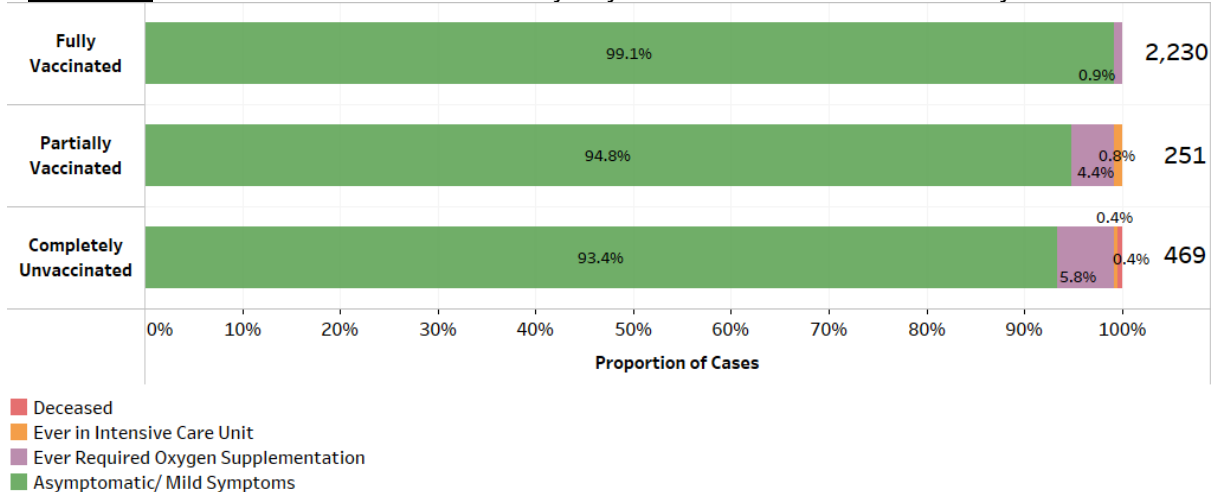


Figure 5: Deaths and Active Cases in ICU or Requiring Oxygen Supplementation, by Age Group



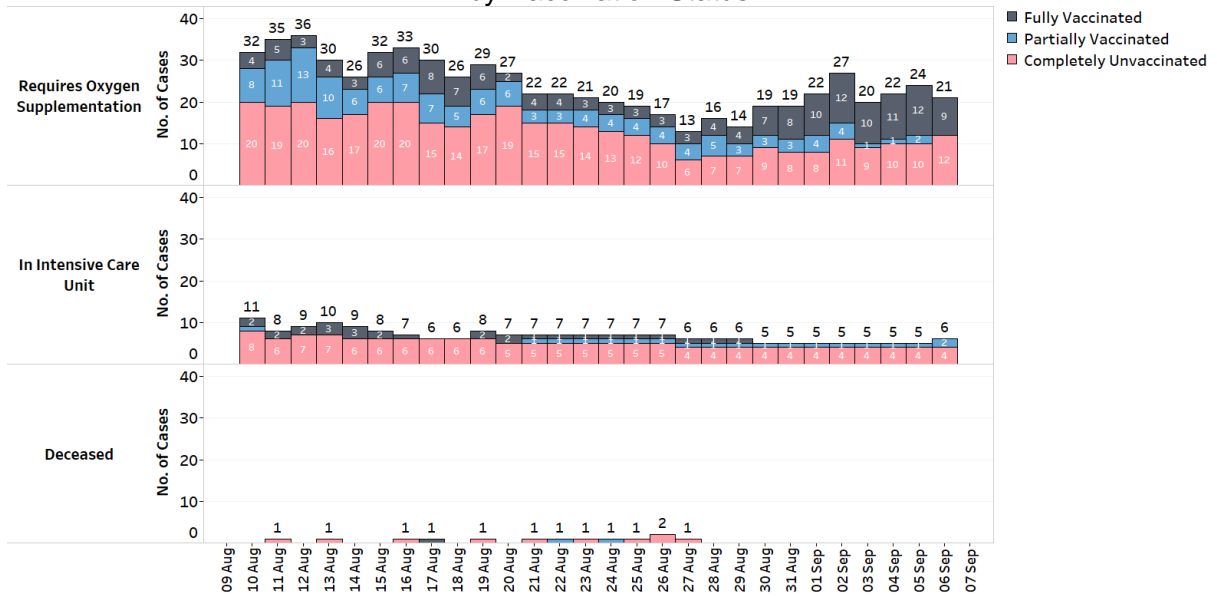
4. There is continuing evidence that almost all fully-vaccinated individuals do not suffer serious disease when infected, unless if they had underlying medical conditions that made them more susceptible. Over the last 28 days, the percentage of unvaccinated who became severely ill or died is 6.6%, while that for the fully vaccinated is 0.9%.

Figure 6: Local Cases in the Last 28 Days by Vaccination Status & Severity of Condition⁴



⁴ Fully vaccinated - more than 14 days after completing vaccination regimen (both doses of the vaccine or one dose for recovered individuals). Partially vaccinated – received 1 dose of 2-dose vaccine or COVID-positive within 14 days of completing vaccination regimen.

Figure 7: Deaths and Active Cases in ICU or Requiring Oxygen Supplementation, by Vaccination Status

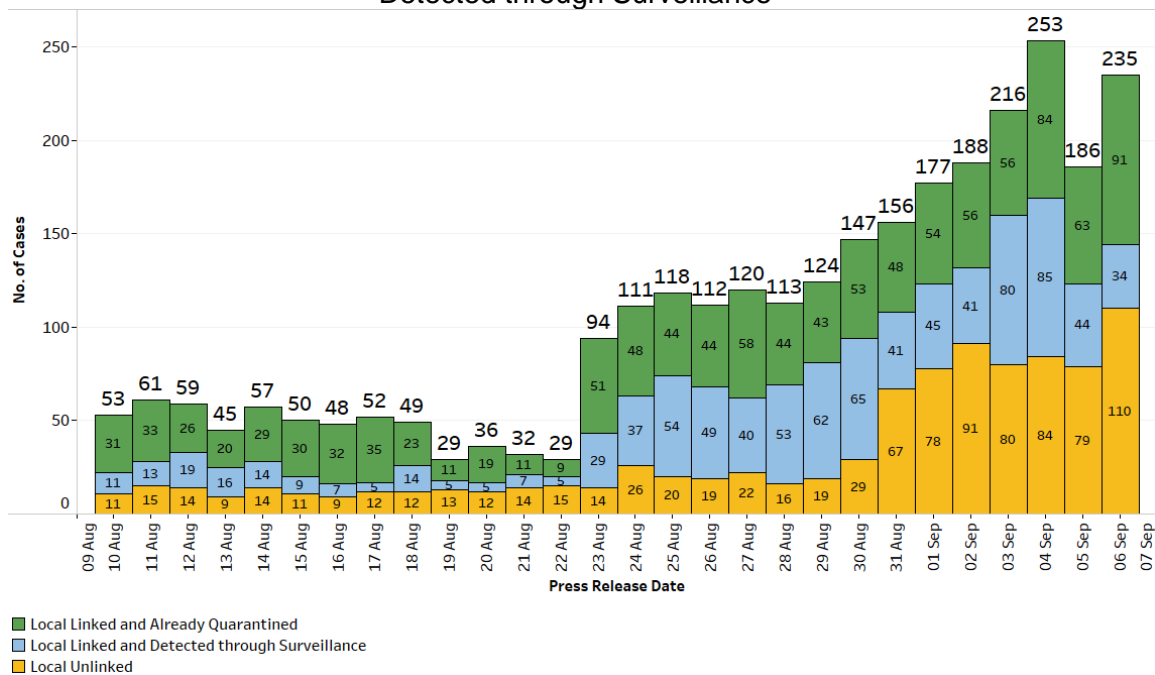


Locally transmitted COVID-19 cases

5. There are 235 cases of locally transmitted COVID-19 infection today. 91 are linked to previous cases, and have already been placed on quarantine. 34 are linked to previous cases and were detected through surveillance. 110 are currently unlinked.

6. There are 6 imported cases, who have already been placed on Stay-Home Notice (SHN) or isolated upon arrival in Singapore. In total, there are 241 new cases of COVID-19 infection in Singapore today.

Figure 8: Number of Local Unlinked Cases and Linked Cases by Already Quarantined/ Detected through Surveillance⁵



⁵ Incorporates re-classifications of earlier reported cases.

Summary of trends for local cases

7. Overall, the number of new cases in the community has increased from 723 cases in the week before to 1,325 cases in the past week. The number of unlinked cases in the community has also increased from 146 cases in the week before to 573 cases in the past week. The 7-day moving average number of all linked community cases and all unlinked community cases are 107.4 and 81.9 respectively.

Figure 9: 7 Day Moving Average Number of Community Unlinked and Linked Cases⁵

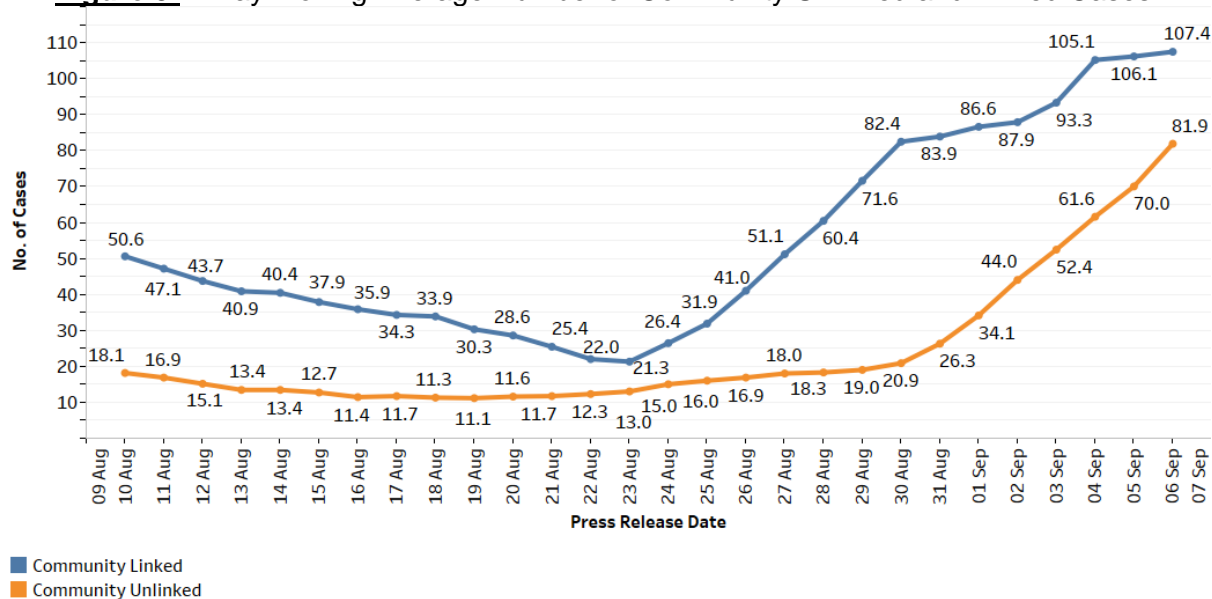
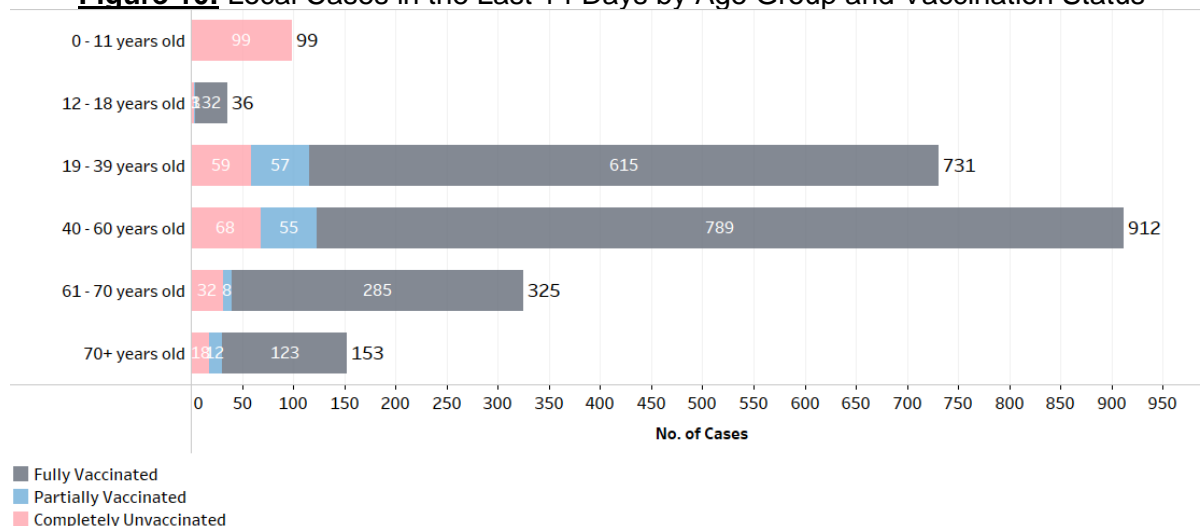


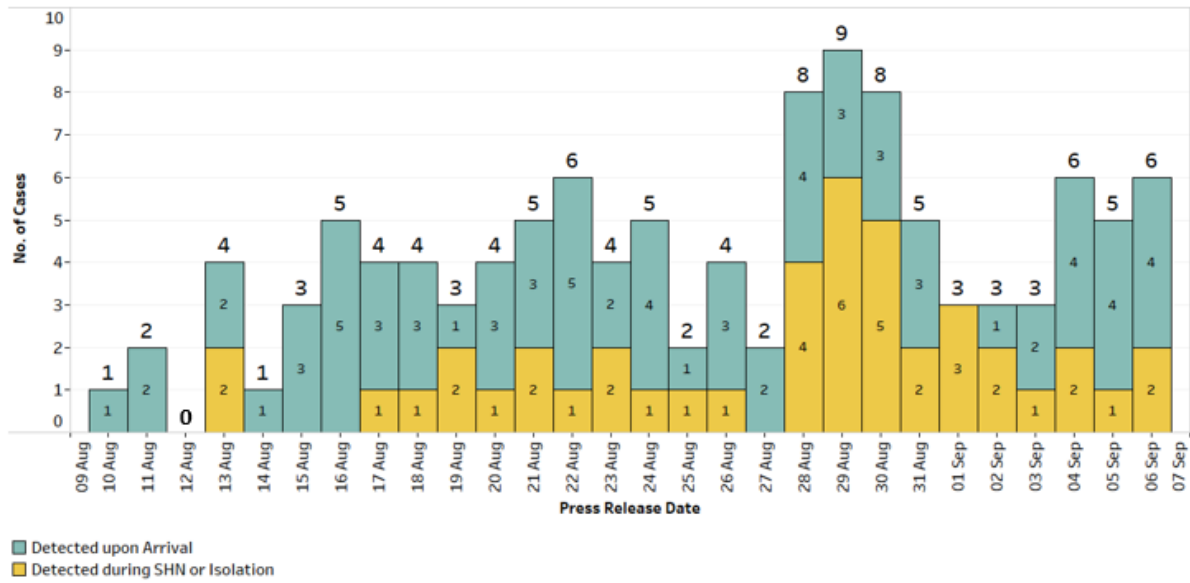
Figure 10: Local Cases in the Last 14 Days by Age Group and Vaccination Status



Summary of trends for imported cases

8. There are a total of 6 imported cases. Of these, 4 were detected upon arrival in Singapore, while 2 developed the illness during SHN or isolation.

Figure 11: Number of Imported Cases by Detected Upon Arrival/
Detected during SHN or Isolation



Active clusters under monitoring

9. There are no new clusters today, and 4 clusters have closed. There are currently 53 clusters, ranging between 3 and 1,155 infections.

Figure 12: Number of Active Clusters

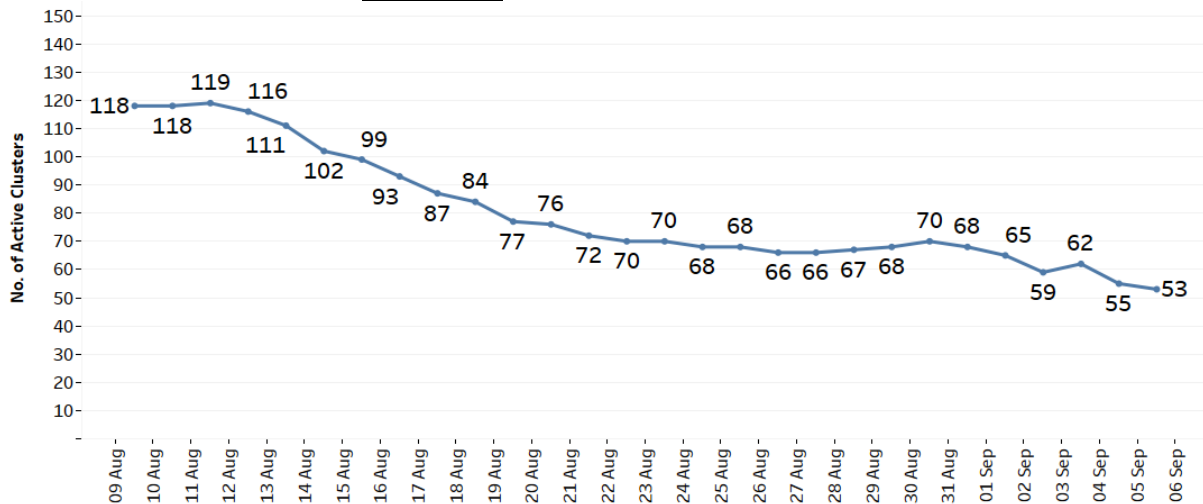


Figure 13: List of Active Clusters

Cluster	New Cases	Total ⁶
Radiance Student Care Centre	2	7
Orient Goldsmiths & Jewellers staff	5	17
Changi General Hospital	5	51

⁶ Includes new cases added today.

Cluster	New Cases	Total ⁶
23 Kian Teck Road dormitory (previously Case 70372)	2	7
Tampines Bus Interchange staff	1	37
Boon Lay Bus Interchange staff	12	126
North Coast Lodge	16	196
Bugis Junction	5	283
Toa Payoh Bus Interchange staff	9	161
Clementi Bus Interchange staff	3	43
Sengkang Bus Interchange staff	1	28
Jurong East Bus Interchange staff	4	40
Sembcorp Marine Tuas Boulevard Yard	4	13
Case 70500	1	4
Punggol Bus Interchange staff	0	37
Bishan Bus Interchange staff	0	32
119 Neythal Road dormitory	0	21
Case 69690	0	15
Institute of Mental Health	0	15
Case 69739	0	8
Homestay Lodge	0	15
Bangkit 257 Coffee House (257 Bangkit Road)	0	5
Selarang Halfway House	0	32
Tuas South Lodge	0	6
Westlite Juniper Dormitory	0	74
Case 68647	0	6
Westlite Kranji Way (previously Case 70714)	0	3
43 Sungei Kadut Loop dormitory	0	19
Case 68669	0	4
Case 68238	0	5
Giant (683 Hougang Avenue 8)	0	9
SAFRA Tampines	0	19
Superland Pre-School (Kreta Ayer Community Centre)	0	18
FairPrice (Kallang Bahru)	0	6
My First Skool (54 Chin Swee Road)	0	40
Case 68646	0	4
Nimble/Knead	0	8
Case 67220	0	32
Case 68431	0	7
Sin Ming 23 Coffee Shop	0	17
KTV lounges/clubs	0	253
Case 67302	0	3
Case 68131	0	4
Zuellig Pharma	0	12
Case 66567	0	34

Cluster	New Cases	Total ⁶
Case 66838	0	4
Jurong Fishery Port/ Hong Lim Market & Food Centre	0	1,155
Case 67045	0	3
Case 67353	0	5
NKF Dialysis Centre (Sakyadhita)	0	9
Case 67982	0	7
Case 67981	0	3
Jem	0	6

10. Please refer to MOH's daily Situation Report (www.moh.gov.sg/covid-19/situation-report) for details.

MINISTRY OF HEALTH
6 SEPTEMBER 2021
