



FOR IMMEDIATE RELEASE

UPDATE ON LOCAL COVID-19 SITUATION

Summary of local situation

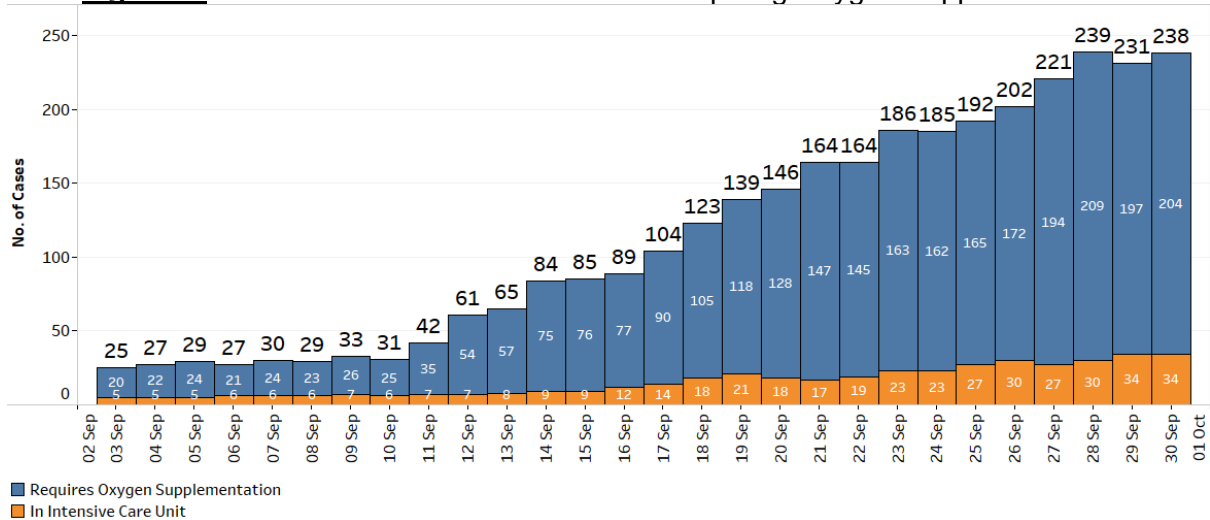
- 1,360 cases are currently warded in hospital. There are currently 204 cases of serious illness requiring oxygen supplementation, and 34 in critical condition in the intensive care unit (ICU).
- Over the last 28 days, of the 28,375 infected individuals, 98.1% had no or mild symptoms, 1.6% required oxygen supplementation, 0.2% required ICU care, and 0.1% has died.
- As of 29 September 2021, 82% of our population has completed their full regimen/ received two doses of COVID-19 vaccines, and 85% has received at least one dose.
- As of 30 September 2021, 12pm, the Ministry of Health has detected a total of 2,478 new cases of COVID-19 infection in Singapore, with 2,022 in the community, 452 in the migrant worker dormitories and 4 imported cases.

Condition of hospitalised cases

As of 30 September 2021, 12pm, 1,360 COVID-19 cases are currently warded in hospital. Most are well and under observation. There are currently 204 cases of serious illness requiring oxygen supplementation, and 34 in critical condition in the ICU. Of those who have fallen very ill, 197 are seniors above 60 years.

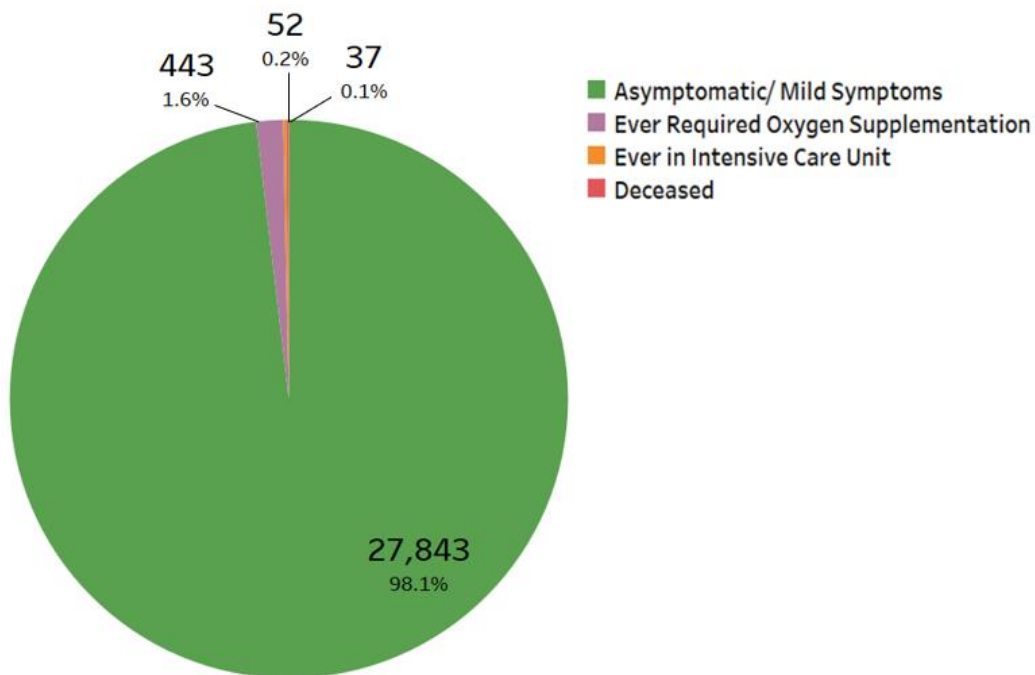
2. 2 more cases have passed away from complications due to COVID-19 infection. Case 85911 was a 79 year-old female Singapore Permanent Resident and Case 90565 was an 87 year-old female Singaporean. Both had not been vaccinated against COVID-19, and had various underlying medical conditions. In total, 95 have passed away from complications due to COVID-19 infection.

Figure 1: Number of Active Cases in ICU or Requiring Oxygen Supplementation¹



3. Over the last 28 days, the percentage of local cases who were asymptomatic or had mild symptoms is 98.1%. 443 cases required oxygen supplementation and 52 had been in the ICU. Of these, 49.9% were fully vaccinated and 50.1% were unvaccinated/ partially vaccinated. 37 have died, of whom 29.7% were fully vaccinated and 70.3% were unvaccinated/ partially vaccinated.

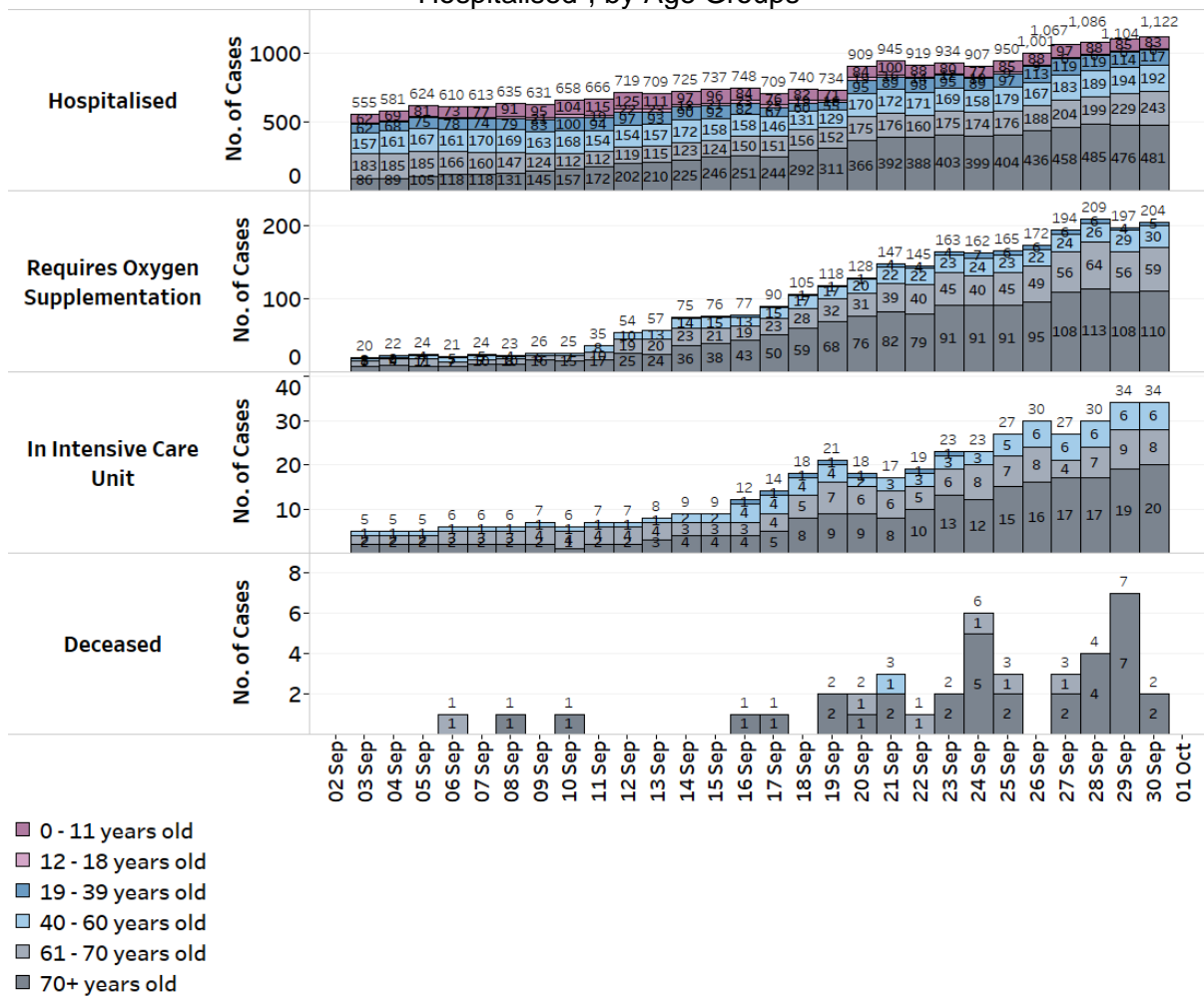
Figure 2: Local Cases in the Last 28 Days by Severity of Condition²



¹ Includes all cases who are currently hospitalised.

² Includes only new cases reported in the past 28 days.

Figure 3: Deaths and Active Cases in ICU, Requiring Oxygen Supplementation or Hospitalised¹, by Age Groups



Update on vaccination progress

4. As of 29 September 2021, 82% of our population has completed their full regimen/ received two doses of COVID-19 vaccines, and 85% has received at least one dose.

5. We have administered a total of 9,183,076 doses of COVID-19 vaccines under the national vaccination programme (Pfizer-BioNTech Comirnaty and Moderna). In total, 4,593,801 individuals have received at least one dose of vaccine under the national vaccination programme, and 4,484,783 individuals having completed the full vaccination regimen. To date, we have invited about 500,000 eligible seniors to receive their booster doses. 215,729 individuals have received their booster shots and another 119,000 have booked their appointments. In addition, 197,155 doses of other vaccines recognised in the World Health Organization’s Emergency Use Listing (WHO EUL) have been administered, covering 100,012 individuals.

Locally transmitted COVID-19 cases

6. As of 30 September 2021, 12pm, the Ministry of Health has detected a total of 2,478 new cases of COVID-19 infection in Singapore, comprising 2,022 community

cases, 452 dormitory residents cases and 4 imported cases.

a) Active clusters under close monitoring

7. We are closely monitoring the clusters listed below, which have already been ringfenced through tracing, testing and isolation.

Figure 4: Large Clusters with New Cases

Cluster	New Cases	Total ³	Remarks
MWS Christalite Methodist Home	20	29	Transmission amongst staff and residents. Of the 29 cases, 1 is a staff and 28 are residents.
Jurong Penjuru Dormitory 1	9	48	Intra-dormitory transmission amongst residents with no evidence of spread beyond dormitory.
Jurong Penjuru Dormitory 2	5	44	Intra-dormitory transmission amongst residents with no evidence of spread beyond dormitory.
ASPRI-Westlite Papan Dormitory	12	97	Intra-dormitory transmission amongst residents with no evidence of spread beyond dormitory.
9 Defu South Street 1 dormitory	13	151	Intra-dormitory transmission amongst residents with no evidence of spread beyond dormitory.
Cochrane Lodge 2 Dormitory	14	62	Intra-dormitory transmission amongst residents with no evidence of spread beyond dormitory.
PPT Lodge 1B Dormitory	11	73	Intra-dormitory transmission amongst residents with no evidence of spread beyond dormitory.
Kian Teck Hostel	13	62	Intra-dormitory transmission amongst residents with no evidence of spread beyond dormitory.
Man Fatt Lam Elderly Joy Daycare Centre	1	17	Transmission amongst clients and staff. Of the 17 cases, 14 are clients, 1 is a staff, and 2 are household members of cases.
Pasir Panjang Wholesale Centre	2	148	Transmission amongst workers and trade visitors. Of the 148 cases, 134 are workers at the market, 4 are trade visitors and 10 are household members of cases. New cases have already been quarantined.
My Little Campus (Yishun)	1	51	Transmission amongst staff and students. Of the 51 cases, 3 are staff, 27 are students and 21 are household members of cases. New case has

³ Includes new cases added today.

Cluster	New Cases	Total ³	Remarks
			already been quarantined.
Avery Lodge	19	369	Intra-dormitory transmission amongst residents with no evidence of spread beyond dormitory.
Blue Stars Dormitory	16	421	Intra-dormitory transmission amongst residents with no evidence of spread beyond dormitory. New cases have already been quarantined.
Woodlands Dormitory	35	348	Intra-dormitory transmission amongst residents with no evidence of spread beyond dormitory. New cases have already been quarantined.
North Coast Lodge	16	365	Intra-dormitory transmission amongst residents with no evidence of spread beyond dormitory. New cases have already been quarantined.

b) Summary of trends for local cases

8. There are 2,474 new cases of locally transmitted COVID-19 infection in Singapore, with 2,022 in the community and 452 in the migrant worker dormitories. Amongst the local cases today are 535 seniors who are above 60 years.

Figure 5: Number of Community Cases by Age

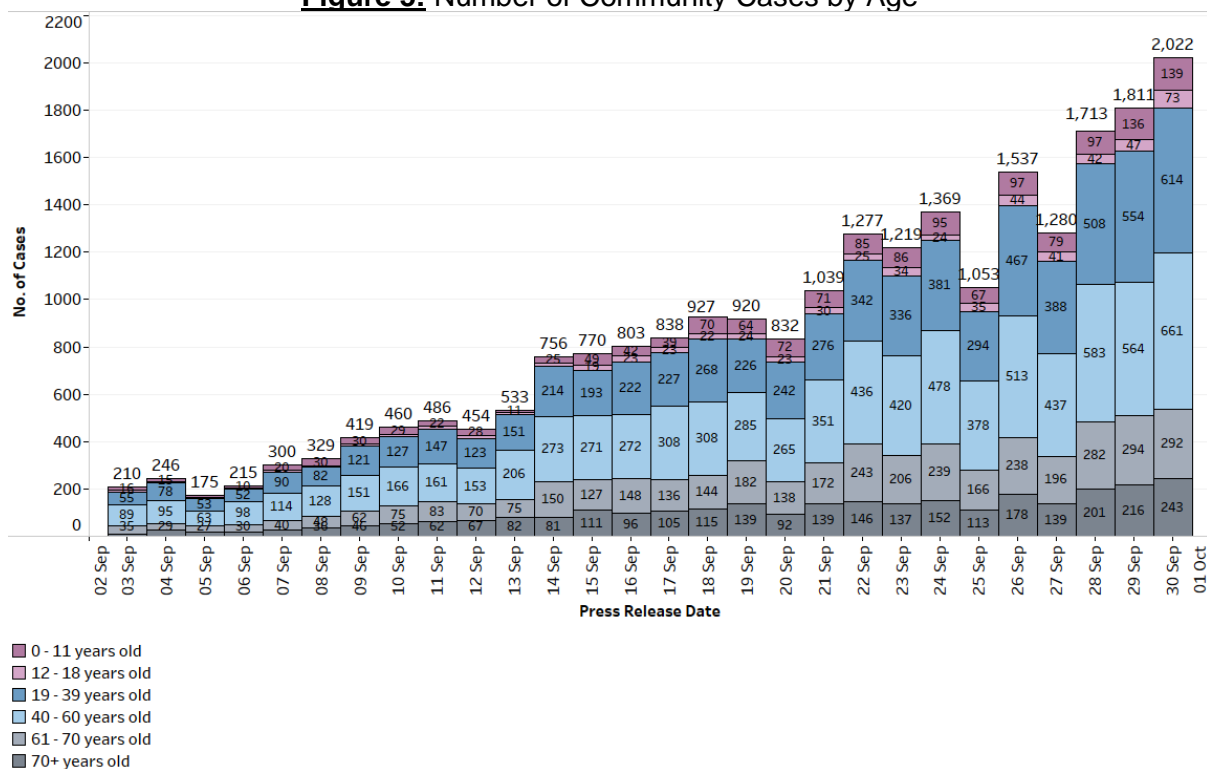
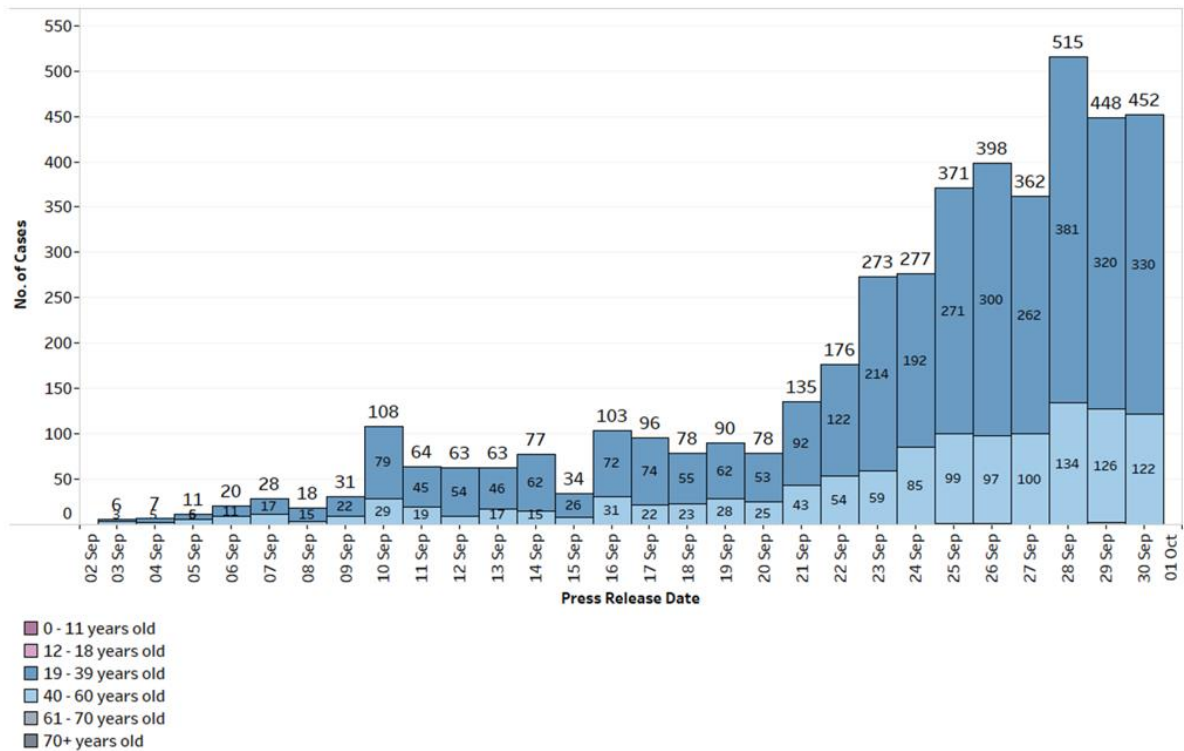


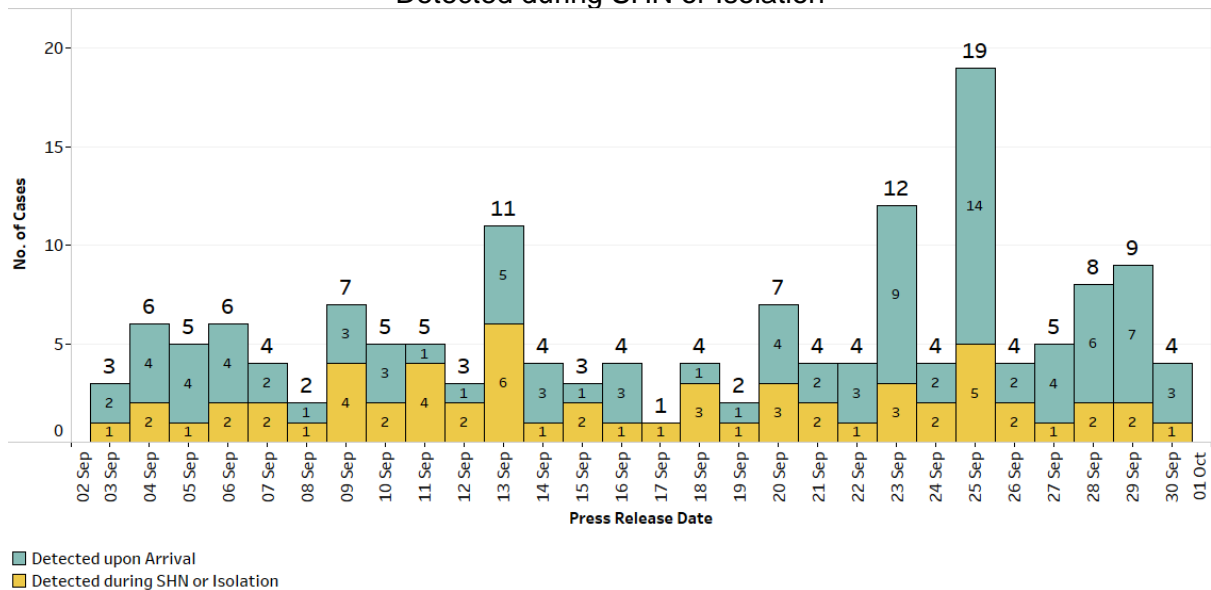
Figure 6: Number of Dormitory Cases by Age



Summary of trends for imported cases

9. There are a total of 4 imported cases, who have already been placed on Stay-Home Notice (SHN) or isolated upon arrival in Singapore. Of these, 3 were detected upon arrival in Singapore, while 1 developed the illness during SHN or isolation.

Figure 7: Number of Imported Cases by Detected Upon Arrival/ Detected during SHN or Isolation



10. Please refer to MOH’s daily Situation Report (www.moh.gov.sg/covid-19)

19/situation-report) for details.

MINISTRY OF HEALTH
30 SEPTEMBER 2021
