



FOR IMMEDIATE RELEASE

UPDATE ON LOCAL COVID-19 SITUATION

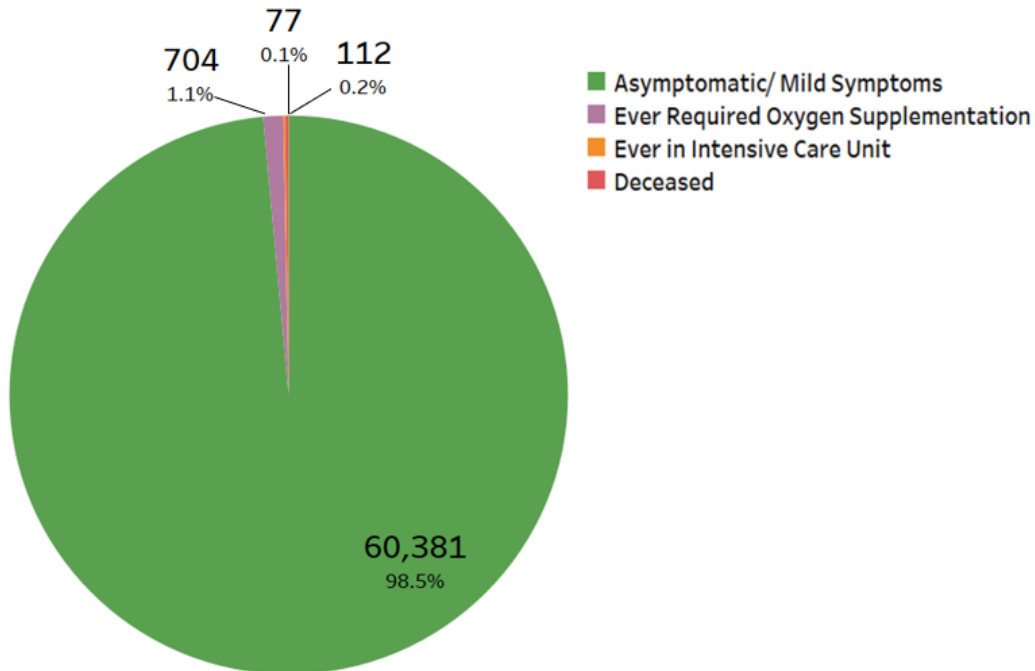
Summary of local situation

- 1,507 cases are currently warded in hospital. 300 cases require oxygen supplementation and 46 are in the intensive care unit (ICU).
- Over the last 28 days, of the 61,274 infected individuals, 98.5% had no or mild symptoms, 1.1% required oxygen supplementation, 0.1% required ICU care, and 0.2% has died.
- As of 12 October 2021, 84% of our population has completed their full regimen/ received two doses of COVID-19 vaccines, and 85% has received at least one dose.
- As of 13 October 2021, 12pm, the Ministry of Health has detected a total of 3,190 new cases of COVID-19 infection in Singapore, with 2,686 in the community, 498 in the migrant worker dormitories and 6 imported cases.

Situation update

1. Over the last 28 days, 98.5% of local infected cases were asymptomatic or had mild symptoms, 1.1% required oxygen supplementation, and 0.1% had been in the ICU. Amongst those who required oxygen supplementation and ICU, 49.6% were fully vaccinated and 50.4% were unvaccinated/ partially vaccinated.

Figure 1: Local Cases in the Last 28 Days by Severity of Condition¹

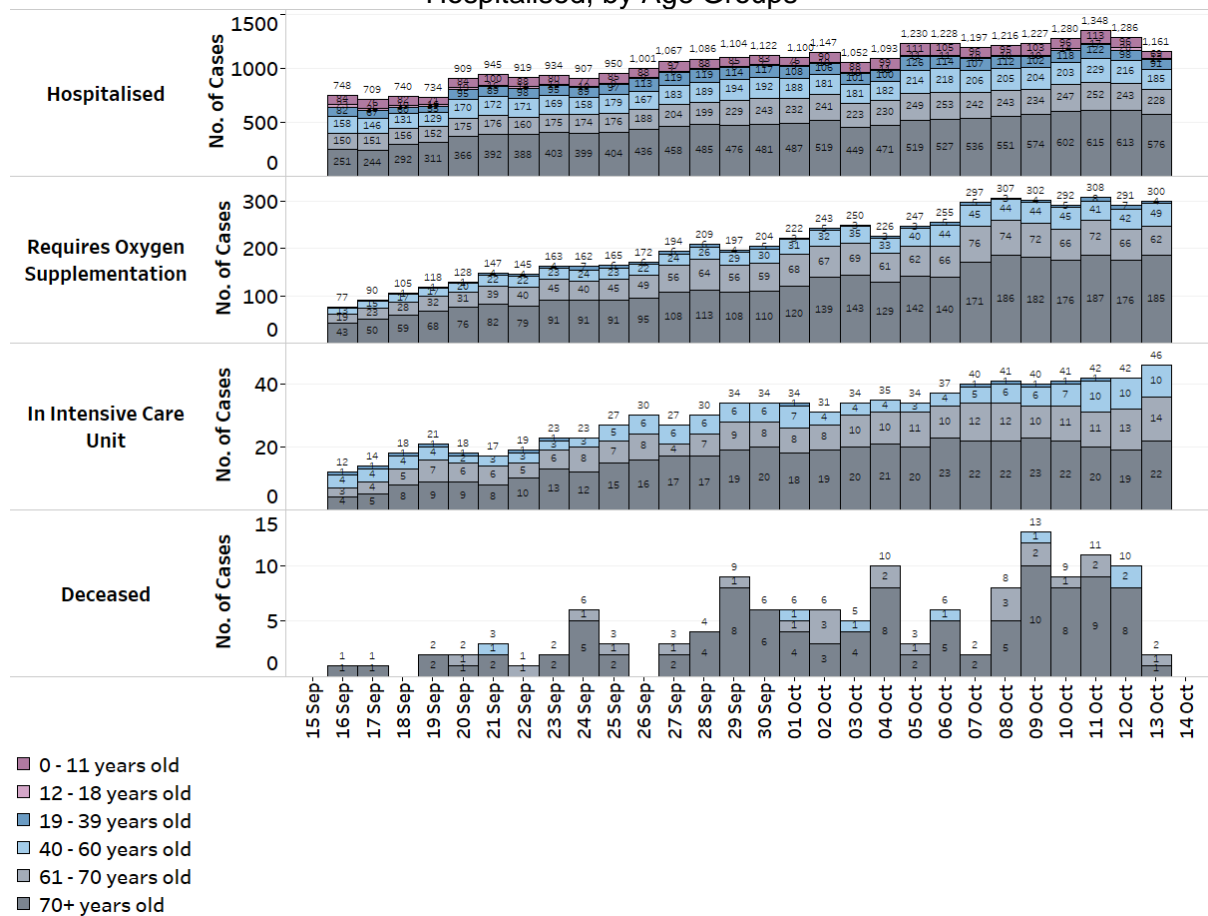


¹ Includes only new cases reported in the past 28 days. Based on cases' worst-ever condition; deceased cases previously in ICU are counted under 'Deceased' and not under 'Ever in Intensive Care Unit'.

2. 9 more cases have passed away from complications due to COVID-19 infection.² Of these, 6 were male Singaporeans and 3 were female Singaporeans, aged between 52 and 98 years. Amongst them, 6 had been unvaccinated against COVID-19, 2 had been partially vaccinated and 1 had been vaccinated. 8 of them had various underlying medical conditions, while an unvaccinated case had no known medical conditions. The 52 year-old case had been partially vaccinated against COVID-19, and had multiple underlying medical conditions.

3. Amongst those who have passed away over the last 28 days, 24.1% were fully vaccinated and 75.9% were unvaccinated/ partially vaccinated.

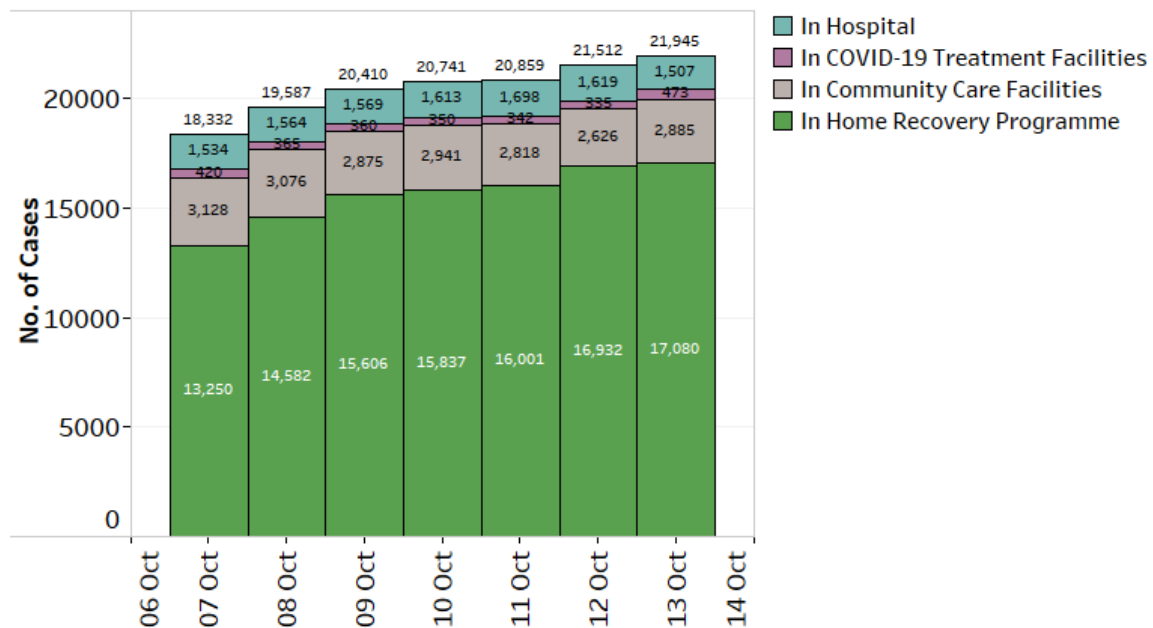
Figure 2: Deaths and Active Cases in ICU, Requiring Oxygen Supplementation or Hospitalised, by Age Groups



² Cases 85490, 104465, 116628, 117027, 125777, 129048, 132264, 132652 and 136349.

4. As of 13 October 2021, 12pm, amongst all COVID-19 community cases who have been onboarded or admitted, 17,080 (77.8%) cases are undergoing Home Recovery. 2,885 (13.1%) cases are in Community Care Facilities, 473 (2.2%) cases are in COVID-19 Treatment Facilities, and 1,507 (6.9%) COVID-19 patients are currently warded in hospital, mostly for observation. 300 require oxygen supplementation, and 46 are in the ICU.

Figure 3: Breakdown of Number of Active Cases in Hospital, COVID-19 Treatment Facilities, Community Care Facilities, and Home Recovery Programme in the Last 7 Days



Vaccination progress

5. As of 12 October 2021, 84% of our population has completed their full regimen/ received two doses of COVID-19 vaccines, and 85% has received at least one dose.

6. We have administered a total of 9,518,022 doses of COVID-19 vaccines under the national vaccination programme (Pfizer-BioNTech Comirnaty and Moderna). In total, 4,609,566 individuals have received at least one dose of vaccine under the national vaccination programme, and 4,548,440 individuals having completed the full vaccination regimen. In addition, 218,153 doses of other vaccines recognised in the World Health Organization’s Emergency Use Listing (WHO EUL) have been administered, covering 114,681 individuals.

7. To date, we have invited about 760,000 eligible individuals to receive their booster doses. 487,673 individuals have received their booster shots and another 117,000 have booked their appointments.

Active clusters under close monitoring

8. We are closely monitoring the cluster listed below, which has already been ringfenced through tracing, testing and isolation.

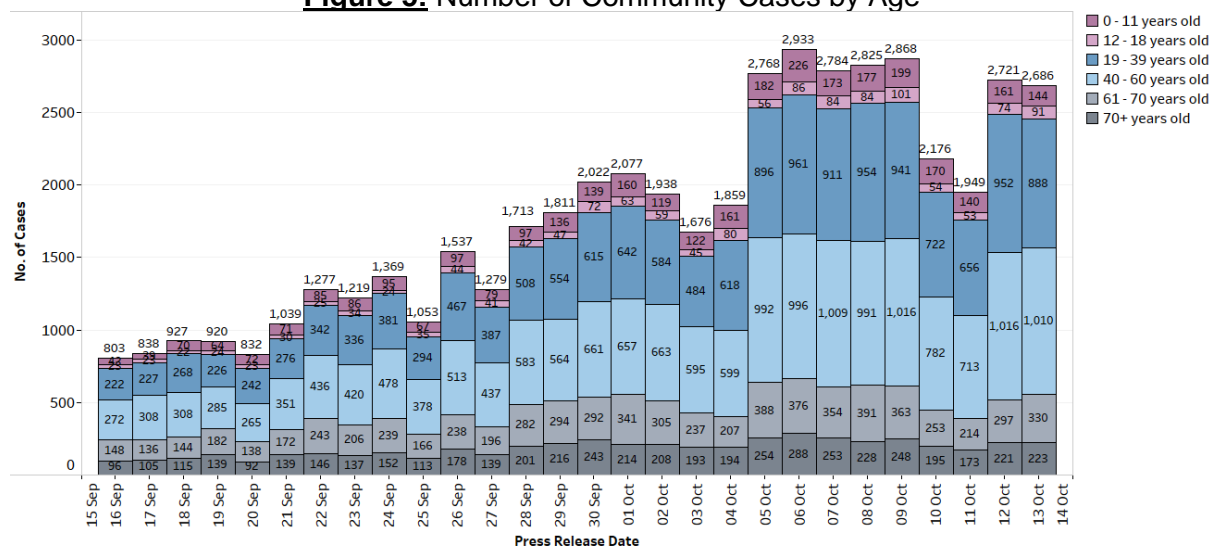
Figure 4: Large Clusters with New Cases

Cluster	New Cases	Total ³	Remarks
Pasir Panjang Wholesale Centre	2	369	Transmission amongst workers and trade visitors. Of the 369 cases, 340 are workers at the market, 4 are trade visitors and 25 are household members of cases.
MWS Christalite Methodist Home	2	95	Transmission amongst staff and residents. Of the 95 cases, 11 are staff and 84 are residents. New cases have already been isolated.

Summary of trends for local cases

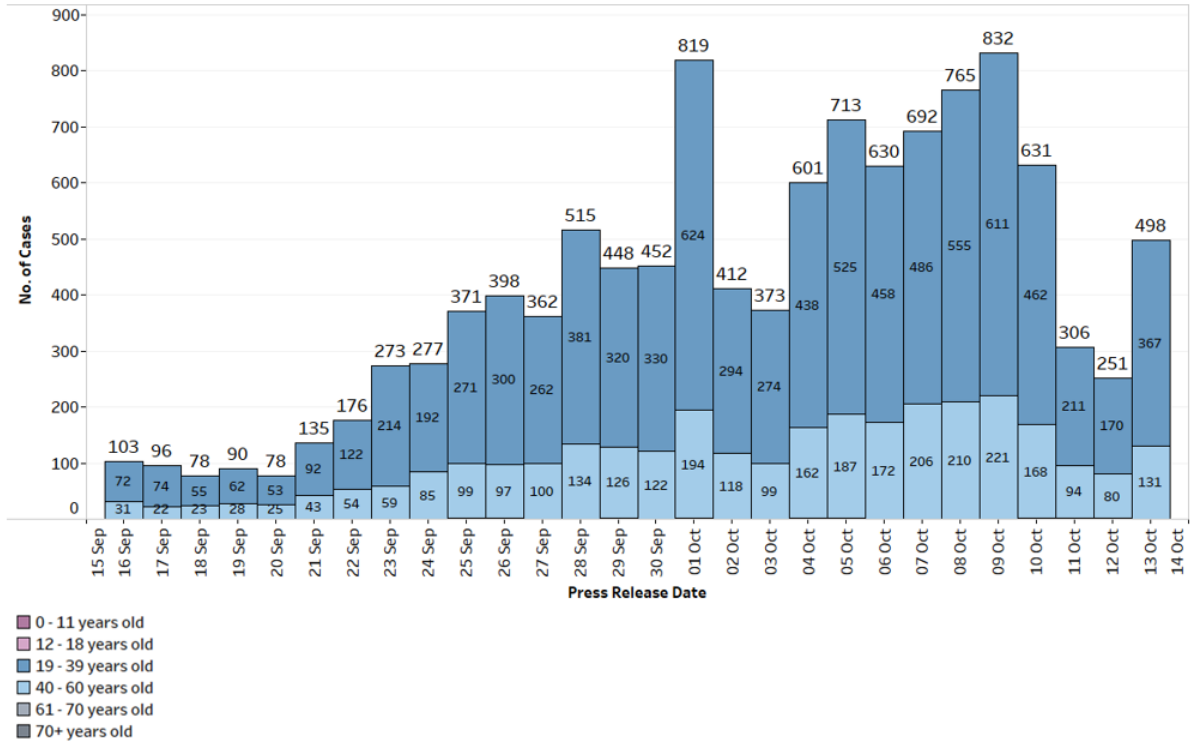
9. As of 13 October 2021, 12pm, the Ministry of Health has detected a total of 3,190 new cases of COVID-19 infection in Singapore, comprising 2,686 community cases, 498 dormitory residents cases and 6 imported cases. Amongst the local cases today are 553 seniors who are above 60 years.

Figure 5: Number of Community Cases by Age



³ Includes new cases added today.

Figure 6: Number of Dormitory Cases by Age



10. Please refer to MOH’s daily Situation Report (www.moh.gov.sg/covid-19/situation-report) for details.

MINISTRY OF HEALTH
13 OCTOBER 2021