



FOR IMMEDIATE RELEASE

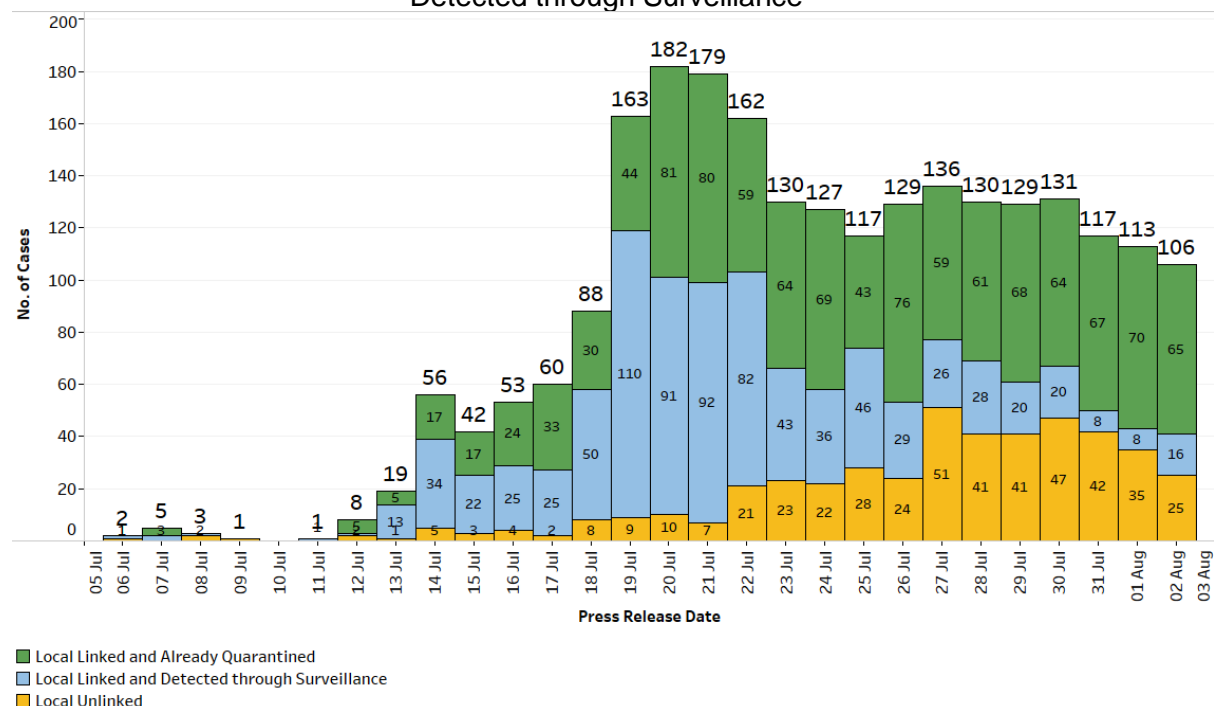
UPDATE ON LOCAL COVID-19 SITUATION

As of 2 August 2021, 12pm, the Ministry of Health (MOH) has confirmed and verified that there are 106 cases of locally transmitted COVID-19 infection. 65 are linked to previous cases, and have already been placed on quarantine. 16 are linked to previous cases and were detected through surveillance. 25 are currently unlinked. Amongst the cases are 7 seniors above 70 years who are unvaccinated or partially vaccinated, and are at risk of serious illness.

2. There are 5 imported cases, who have already been placed on Stay-Home Notice (SHN) or isolated upon arrival in Singapore. 3 were detected upon arrival in Singapore, while 2 developed the illness during SHN or isolation.

3. In total, there are 111 new cases of COVID-19 infection in Singapore today.

Figure 1: Number of Local Unlinked Cases and Linked Cases by Already Quarantined/ Detected through Surveillance¹

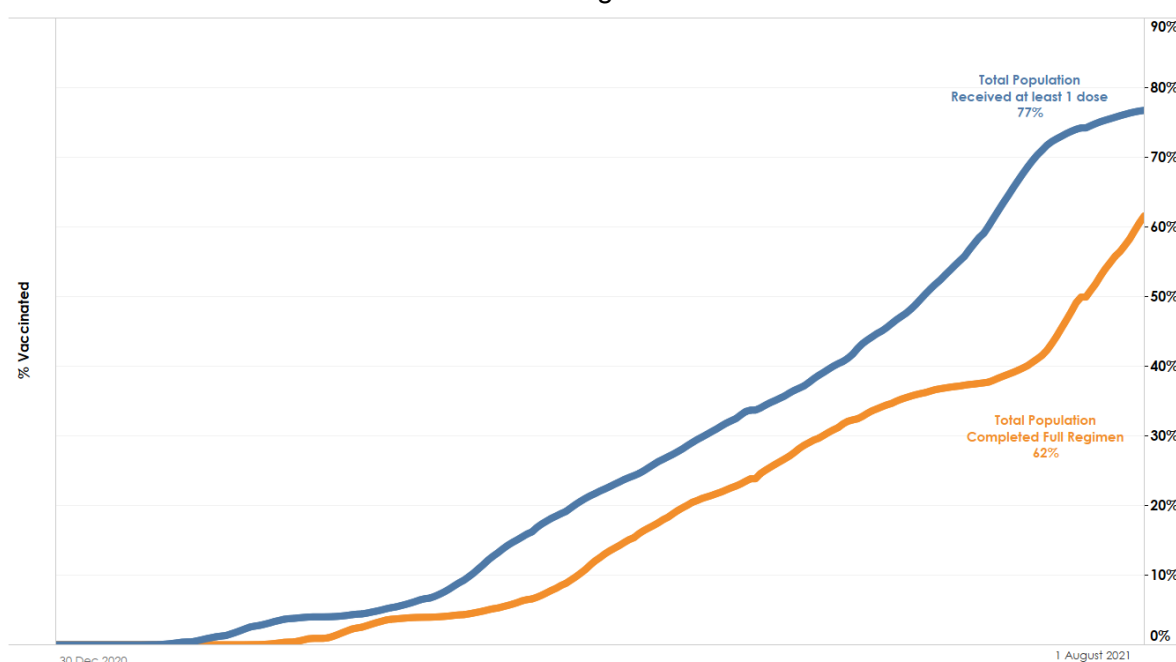


¹ Incorporates re-classifications of earlier reported cases.

Progress of national vaccination programme

4. As of 1 August 2021, 62% of our population has completed their full regimen/ received two doses of COVID-19 vaccines under the national vaccination programme, and 77% has received at least one dose. In total, we have administered a total of 7,638,279 doses of COVID-19 vaccines under the national vaccination programme, covering 4,313,182 individuals, with 3,448,193 individuals having completed the full vaccination regimen. In addition, 107,730 doses of Sinovac vaccines have been administered as of 1 August 2021, covering 74,935 individuals.

Figure 2: Percentage of Total Population who Received At Least First Dose² and Completed Full Regimen³



² Based on National Immunisation Registry data.

³ Full regimen refers to individuals who have received both doses of the vaccine or one dose for vaccinated recovered individuals.

Figure 3: Percentage of Vaccinated Individuals who Received At Least First Dose by Age Group

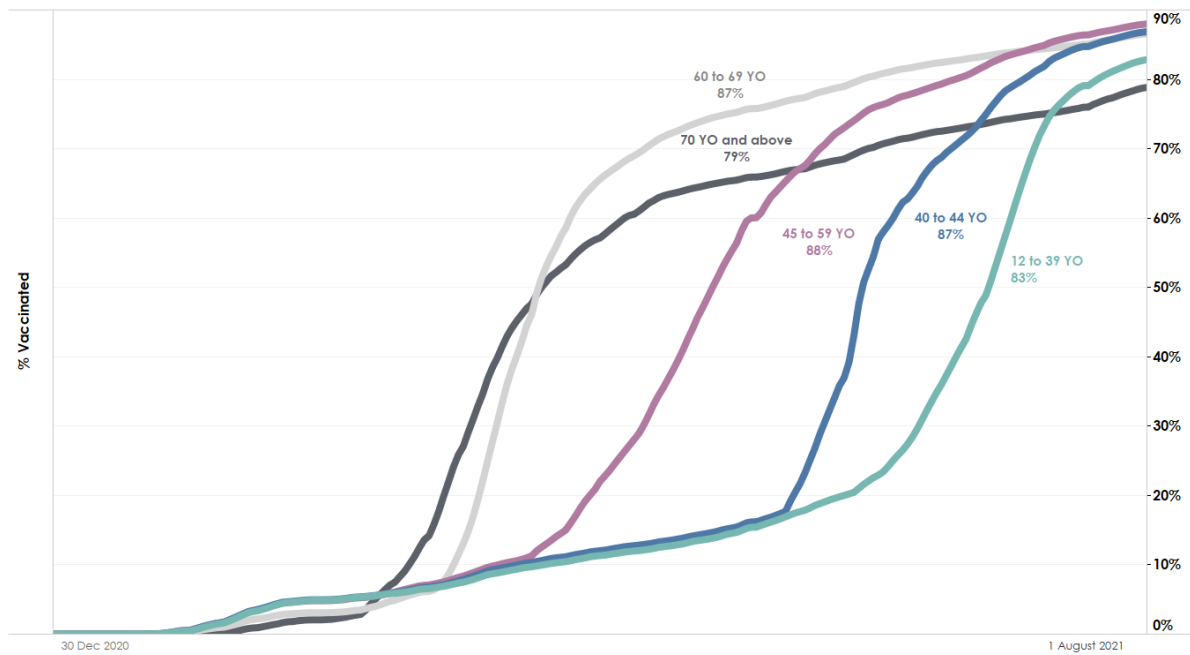


Figure 4: Percentage of Individuals who Completed Full Regimen of COVID-19 Vaccine by Age Group

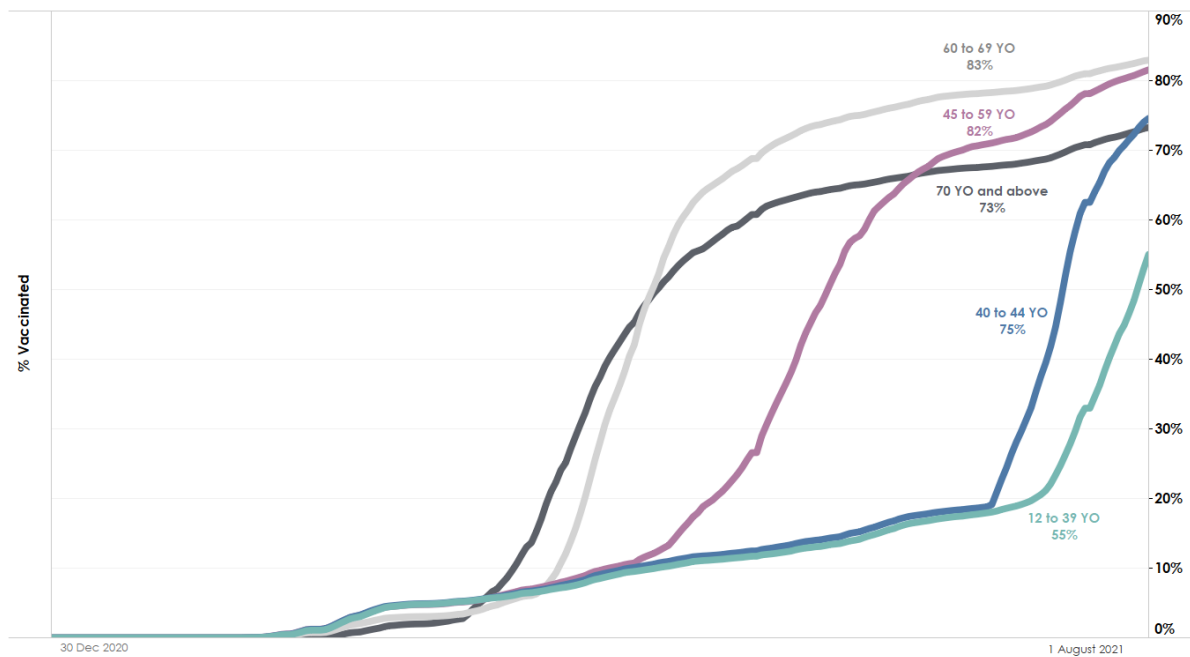
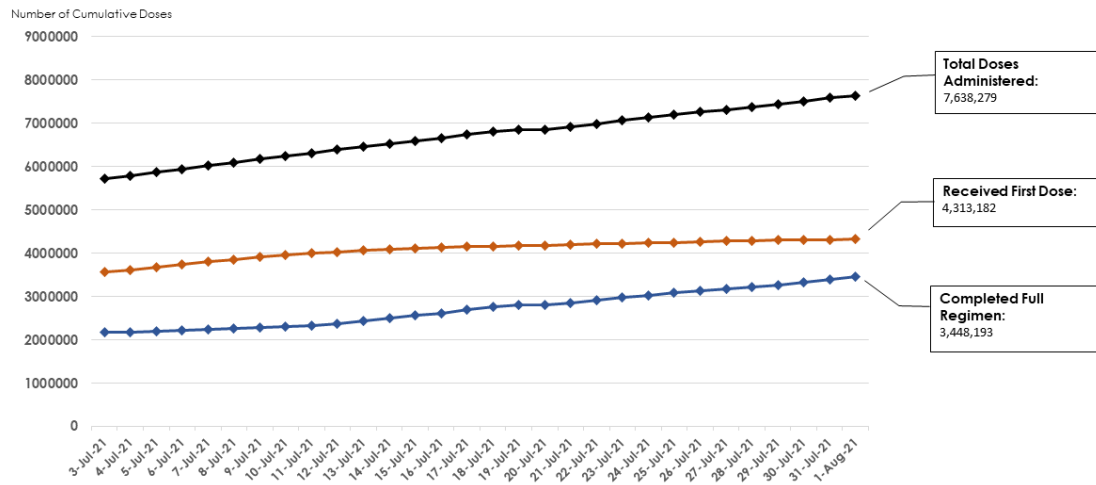


Figure 5: Total number of doses administered



Condition of confirmed cases

5. 602 cases are currently warded in hospital. Most are well and under observation. There are currently 36 cases of serious illness requiring oxygen supplementation, and 7 in critical condition in the intensive care unit (ICU). 4 amongst these 43 cases are fully vaccinated. Of these, 3 require oxygen supplementation while 1 requires ICU care as they have underlying medical conditions. 31 seniors above 60 years, of whom 28 are completely unvaccinated or partially vaccinated, have fallen very ill.

6. Imported Case 67264, a 34 year-old male Ukraine national, has passed away from complications due to COVID-19 infection on 1 August 2021. He was a sea crew who arrived in Singapore on board a vessel on 29 July. He had developed a fever, cough and lethargy on 25 July, and subsequently breathlessness on 31 July. He was conveyed from the vessel to Singapore General Hospital on 1 August, and was confirmed to have COVID-19 infection on the same day. In total, 38 have passed away from complications due to COVID-19 infection.

Figure 6: Number of Active Cases in ICU or Requiring Oxygen Supplementation

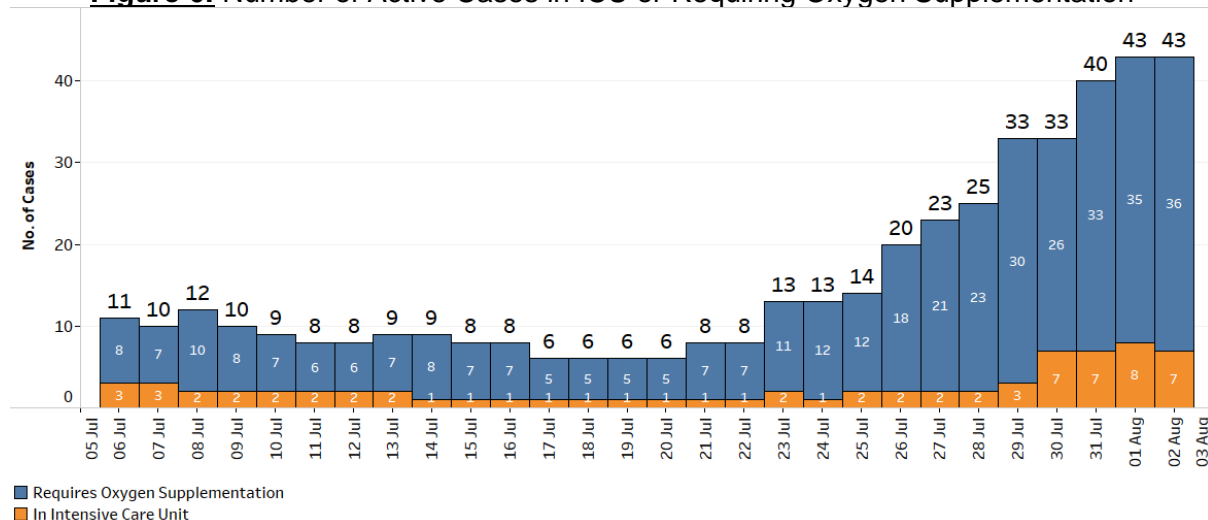
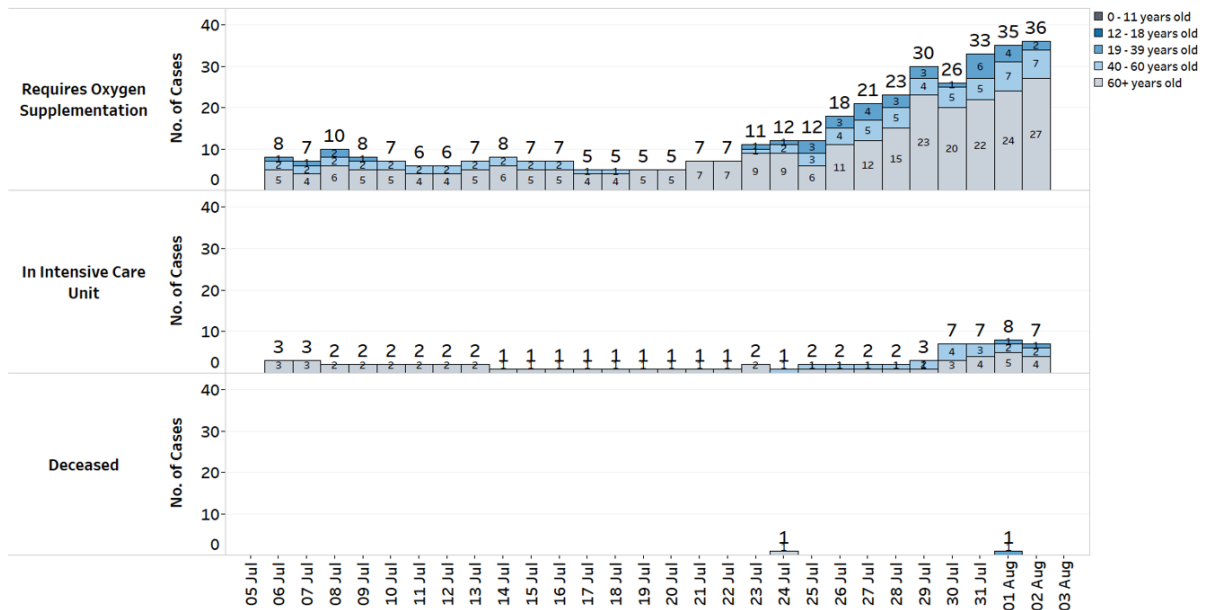
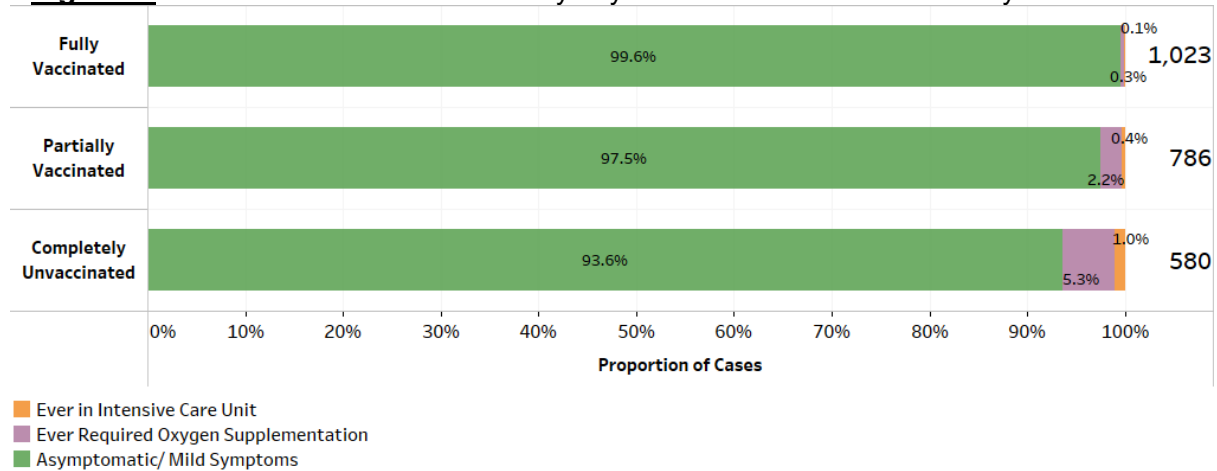


Figure 7: Deaths and Active Cases in ICU or Requiring Oxygen Supplementation, by Age Group



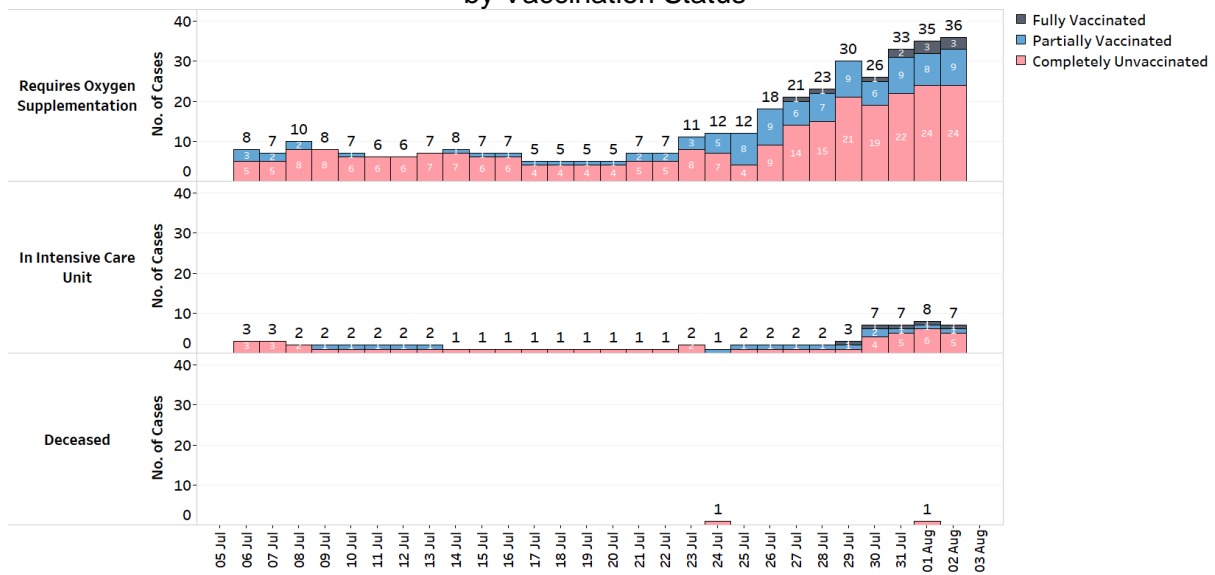
7. There is continuing evidence that vaccination helps to prevent serious disease when one gets infected. Over the last 28 days, 61 local cases required oxygen supplementation, were admitted to ICU or passed away. 37 are unvaccinated, 20 are partially vaccinated and 4 are fully vaccinated.

Figure 8: Local Cases in the Last 28 Days by Vaccination Status & Severity of Condition⁴



⁴ Fully vaccinated - more than 14 days after completing vaccination regimen (both doses of the vaccine or one dose for recovered individuals). Partially vaccinated – received 1 dose of 2-dose vaccine or COVID-positive within 14 days of completing vaccination regimen.

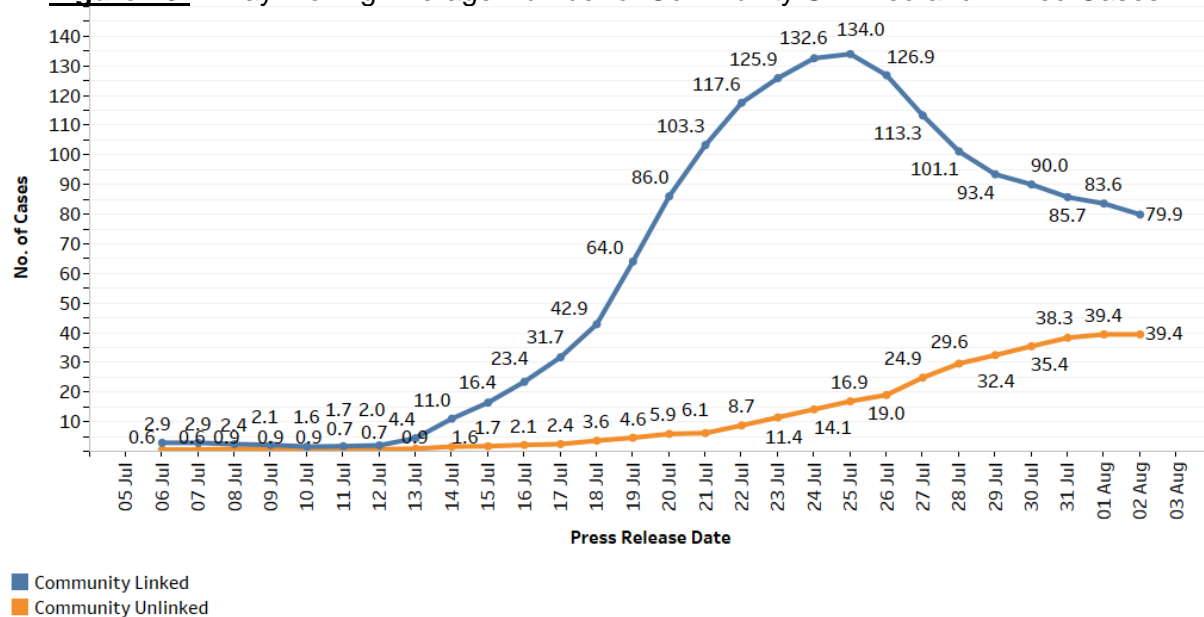
Figure 9: Deaths and Active Cases in ICU or Requiring Oxygen Supplementation, by Vaccination Status⁴



Summary of trends for local cases

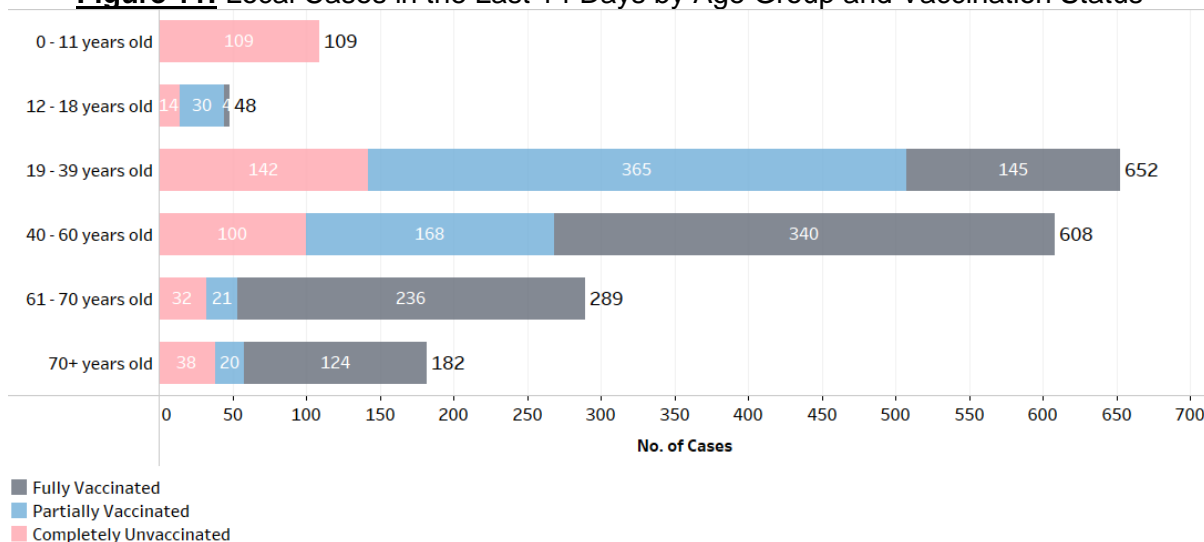
8. Overall, the number of new cases in the community has decreased from 1,021 cases in the week before to 835 cases in the past week. We are likely to continue to see high number of cases in the coming days as we step up efforts to detect them to contain their spread in the community. The number of unlinked cases in the community has increased from 133 cases in the week before to 276 cases in the past week. The 7-day moving average number of all linked community cases and all unlinked community cases are 79.9 and 39.4 respectively.

Figure 10: 7 Day Moving Average Number of Community Unlinked and Linked Cases⁵



⁵ Incorporates re-classifications of earlier reported cases.

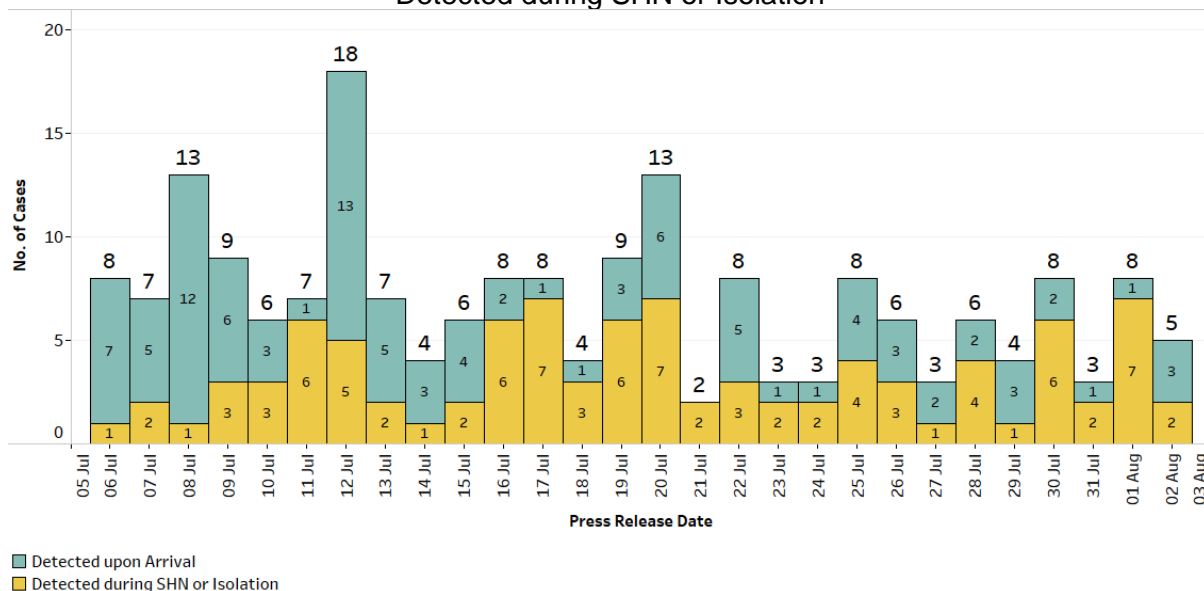
Figure 11: Local Cases in the Last 14 Days by Age Group and Vaccination Status



Summary of trends for imported cases

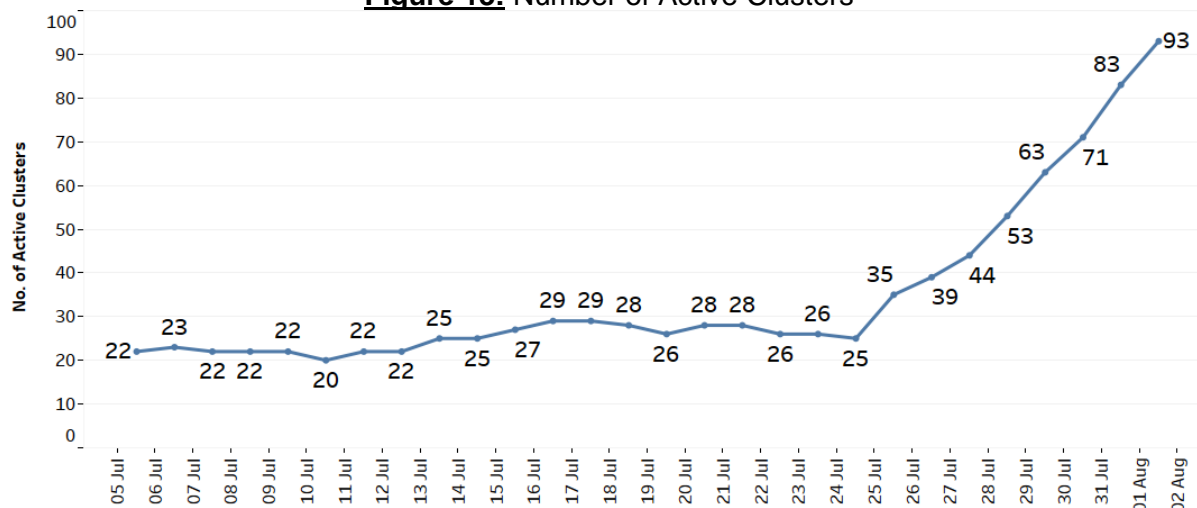
9. There are a total of 5 imported cases today. 3 were detected upon arrival in Singapore, while 2 developed the illness during SHN or isolation.

Figure 12: Number of Imported Cases by Detected Upon Arrival/
Detected during SHN or Isolation



Active clusters under monitoring

10. There are 10 new clusters today. In total, there are currently 93 active clusters, ranging between 3 and 1,072 infections.

Figure 13: Number of Active Clusters**Figure 14: List of Active Clusters**

Cluster	New Cases	Total ⁶
Case 66567 (<i>new cluster</i>)	12	17
Case 66764 (<i>new cluster</i>)	1	3
Case 66868 (<i>new cluster</i>)	1	3
Case 66888 (<i>new cluster</i>)	1	3
Case 66913 (<i>new cluster</i>)	2	3
Case 67004 (<i>new cluster</i>)	2	4
Case 67041 (<i>new cluster</i>)	4	5
Case 67085 (<i>new cluster</i>)	2	3
Case 67204 (<i>new cluster</i>)	1	3
Case 67297 (<i>new cluster</i>)	2	3
Jurong Fishery Port/ Hong Lim Market & Food Centre*	24	1,072
Samy's Curry Restaurant	3	54
Westlite Mandai Dormitory	3	8
Case 65952	2	5
Case 66929	1	5
Home's Favourite Pte Ltd	1	12
Case 65929	1	5
Yishun Community Hospital	0	4
Case 66391	0	3
Case 66713	0	3
Case 66784	0	4
Case 66804	0	4
Case 66844	0	3
Case 67048	0	6
Case 67226	0	3
Case 66774	0	5

⁶ Includes new cases added today.

Cluster	New Cases	Total ⁶
Case 66807	0	5
Case 66449	0	9
Punggol Primary School	0	14
Case 66851	0	5
Case 65999	0	4
Seng Leong Steel (Ent) Pte Ltd	0	4
Case 65751	0	8
Case 66623	0	3
Case 65793	0	3
Case 66240	0	4
Case 66754	0	4
Institution S2 Selarang Park Complex	0	6
Case 66790	0	3
Case 66995	0	3
Case 66473	0	4
Zuellig Pharma	0	7
KTV lounges/clubs	0	251
Marina Bay Sands Casino	0	56
Case 66464	0	7
Case 66370	0	4
Westlite Juniper Dormitory	0	15
Case 64697	0	77
Case 66293	0	3
Case 65882	0	4
Case 66142	0	3
Case 66450	0	3
Case 66458	0	4
Case 66482	0	4
Case 66915	0	6
Case 66538	0	4
Case 66517	0	3
Case 66487	0	4
Case 66468	0	3
Case 66462	0	3
Case 66215	0	4
Case 66106	0	3
Case 66377	0	5
Case 66435	0	6
Case 65893	0	6
Case 66542	0	3
Case 66413	0	4
Case 64752	0	8

Cluster	New Cases	Total ⁶
PSC Express Pte Ltd	0	5
Case 66259	0	4
Case 65360	0	10
Case 65695	0	3
Case 65721	0	4
Case 65972	0	3
Case 66007	0	4
Apex Medical Centre (Jurong)	0	3
Case 65754	0	3
Case 65979	0	3
Case 65132	0	3
Case 66168	0	3
Case 65846	0	3
Case 65791	0	4
Case 65342	0	3
Case 65484	0	5
Case 65365	0	3
Case 64735	0	6
Case 65231	0	4
Case 64599	0	6
Case 64782	0	3
Case 64850	0	3
Khoi Grill & Hotpot	0	8
Case 64642	0	3
Case 64388	0	3

* Please refer to Annex A for the affected markets and food centres.

11. Please refer to MOH's daily Situation Report (www.moh.gov.sg/covid-19/situation-report) for details.

MINISTRY OF HEALTH
2 AUGUST 2021

List of Markets & Food Centres Linked to Jurong Fishery Port Cluster

Clusters:

1. Clementi 448 Market and Food Centre
2. Haig Road Market & Food Centre

With 3 or more cases:

1. Admiralty Wet Market
2. Albert Centre Market & Food Centre
3. Ang Mo Kio Central Market & Food Centre
4. 216 Bedok Food Centre and Market
5. Boon Lay Place Food Village
6. Bukit Timah Wet Market
7. Fajar Market
8. 105 Hougang Avenue 1 Market
9. 505 Jurong West Street 52 Market
10. Mayflower Wet Market and Food Centre
11. Taman Jurong Market
12. Teban Garden Market
13. Teck Ghee Market & Food Centre
14. Tekka Centre
15. Tiong Bahru Market
16. Yuhua Market & Hawker Centre

With fewer than 3 cases:

1. Bangkit Market
2. 630 Bedok Reservoir Road Market and Food Centre
3. Bukit Panjang Wet Market
4. Circuit Road Market and Food Centre (80 Circuit Road)
5. 353 Clementi Market
6. 497 Jurong West Street 41 Market
7. Kim Keat Palm Market & Food Centre
8. 84 Marine Parade Central Market and Food Centre
9. Mei Ling Market & Food Centre
10. 58 New Upper Changi Road Market and Food Centre
11. 118 Rivervale Drive Market
12. 146 Teck Whye Avenue Market
13. 622 Yew Tee Market