



FOR IMMEDIATE RELEASE

UPDATE ON LOCAL COVID-19 SITUATION

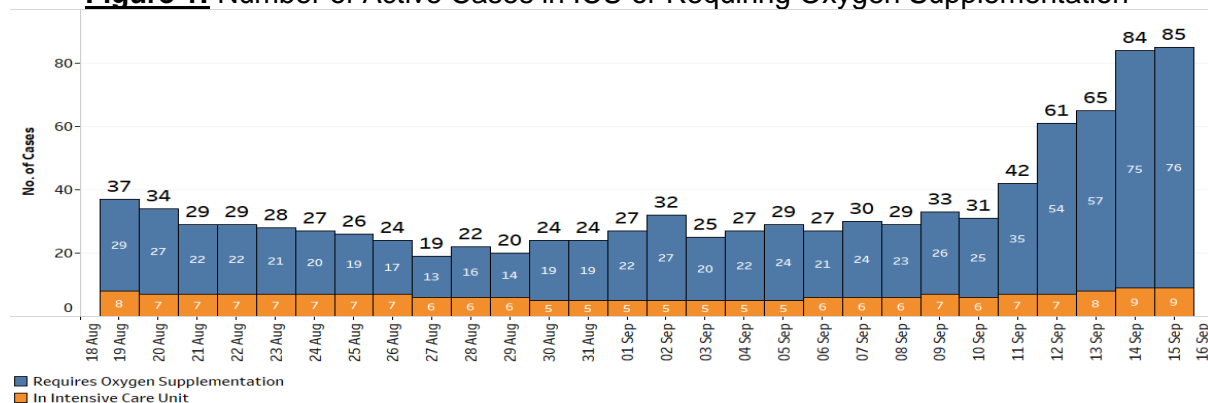
Summary of local situation

- 822 cases are currently warded in hospital. There are currently 76 cases of serious illness requiring oxygen supplementation, and 9 in critical condition in the intensive care unit (ICU).
- Over the last 28 days, the percentage of unvaccinated who became severely ill or died is 5.7%, while that for the fully vaccinated is 1.1%.
- As of 14 September 2021, 81% of our population has completed their full regimen/ received two doses of COVID-19 vaccines, and 84% has received at least one dose.
- As of 15 September 2021, 12pm, the Ministry of Health has detected a total of 807 new cases of COVID-19 infection in Singapore, with 770 in the community, 34 in the migrant worker dormitories and 3 imported cases.

Condition of hospitalised cases

As of 15 September 2021, 12pm, 822 COVID-19 cases are currently warded in hospital. Most are well and under observation. There are currently 76 cases of serious illness requiring oxygen supplementation, and 9 in critical condition in the ICU. Of those who have fallen very ill, 66 are seniors above 60 years.

Figure 1: Number of Active Cases in ICU or Requiring Oxygen Supplementation¹



¹ Includes all cases who are currently hospitalised.

2. Over the last 28 days, the percentage of local cases who were asymptomatic or had mild symptoms is 98.2%. Of the 124 cases who required oxygen supplementation, 59 were not fully vaccinated and 65 were fully vaccinated. Of the 9 who had been in the ICU, 5 were not fully vaccinated and 4 were fully vaccinated. Of the 4 who died, none was fully vaccinated².

Figure 2: Local Cases in the Last 28 Days by Severity of Condition³

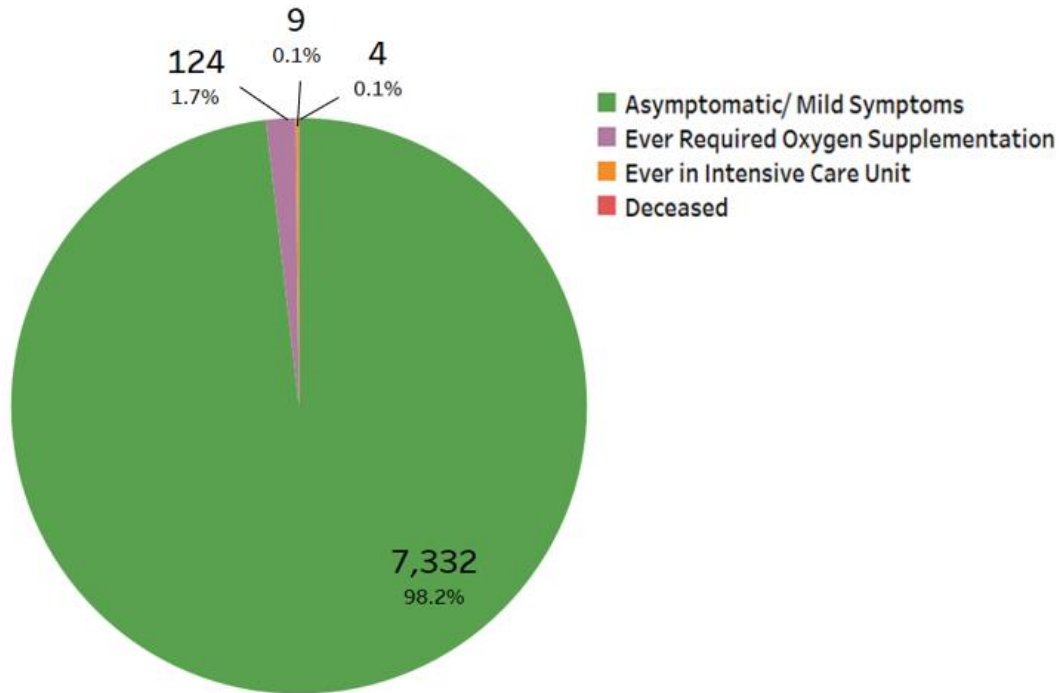
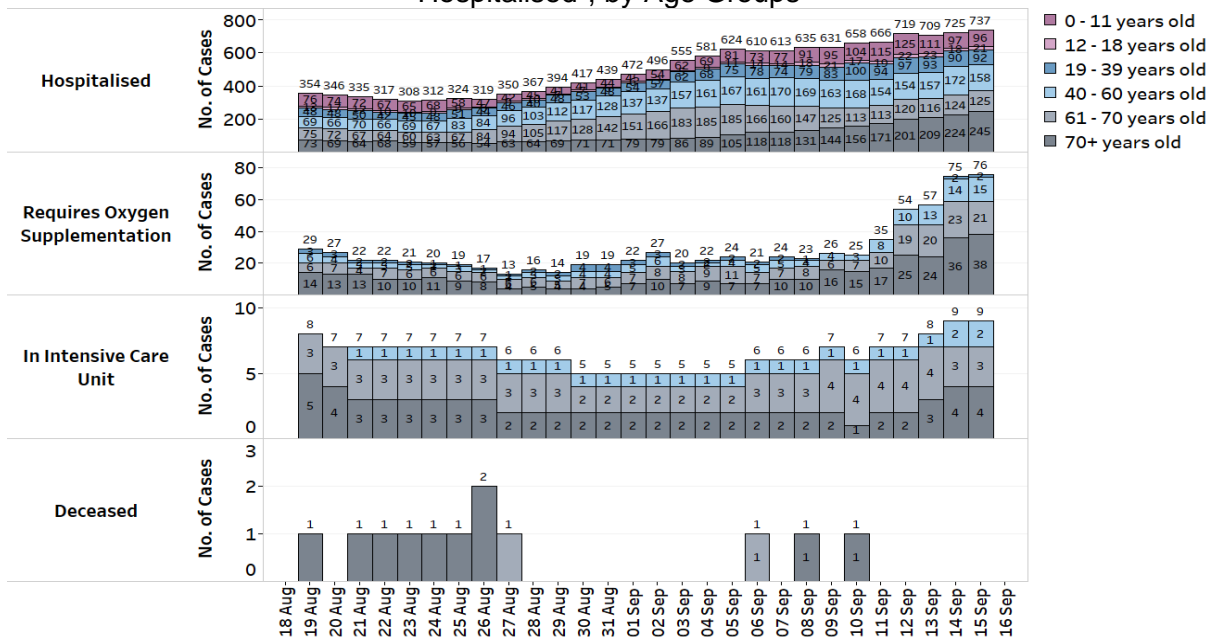


Figure 3: Deaths and Active Cases in ICU, Requiring Oxygen Supplementation or Hospitalised¹, by Age Groups



² Fully vaccinated - more than 14 days after completing vaccination regimen (both doses of the vaccine or one dose for recovered individuals).

³ Includes only new cases reported in the past 28 days.

Update on vaccination progress

3. As of 14 September 2021, 81% of our population has completed their full regimen/ received two doses of COVID-19 vaccines, and 84% has received at least one dose.

4. We have administered a total of 8,881,071 doses of COVID-19 vaccines under the national vaccination programme (Pfizer-BioNTech Comirnaty and Moderna), covering 4,561,574 individuals, with 4,432,411 individuals having completed the full vaccination regimen. In addition, 179,086 doses of other vaccines recognised in the World Health Organization's Emergency Use Listing (WHO EUL) have been administered, covering 86,731 individuals.

Locally transmitted COVID-19 cases

5. As of 15 September 2021, 12pm, the Ministry of Health has detected a total of 807 new cases of COVID-19 infection in Singapore, comprising 770 community cases, 34 dormitory residents cases and 3 imported cases.

a) Active clusters under close monitoring

6. We are closely monitoring the clusters listed below, which have already been ringfenced through tracing, testing and isolation.

Figure 4: Large Clusters with New Cases

Cluster	New Cases	Total ⁴	Remarks
Orange Valley Nursing Home (Simei)	3	13	All 13 cases are residents. Residents and staff on the affected levels are being tested. All other residents and staff will also undergo testing.
Jamiyah Nursing Home	13	13	Transmission amongst staff and residents. Of the 13 cases, 10 are residents and 3 are staff. Residents and staff on the affected level are being tested. All other staff and residents will also undergo testing.
7 Senoko South Road dormitory	9	26	Ongoing intra-dormitory transmission amongst residents, detected through proactive testing. Residents have been placed on quarantine, and are being tested.
Madrasah Irsyad Zuhri Al-Islamiah	1	11	Transmission amongst students in the same class with further spread to household contacts of cases.
11 Tuas Ave 10 dormitory	1	23	Intra-dormitory transmission amongst

⁴ Includes new cases added today.

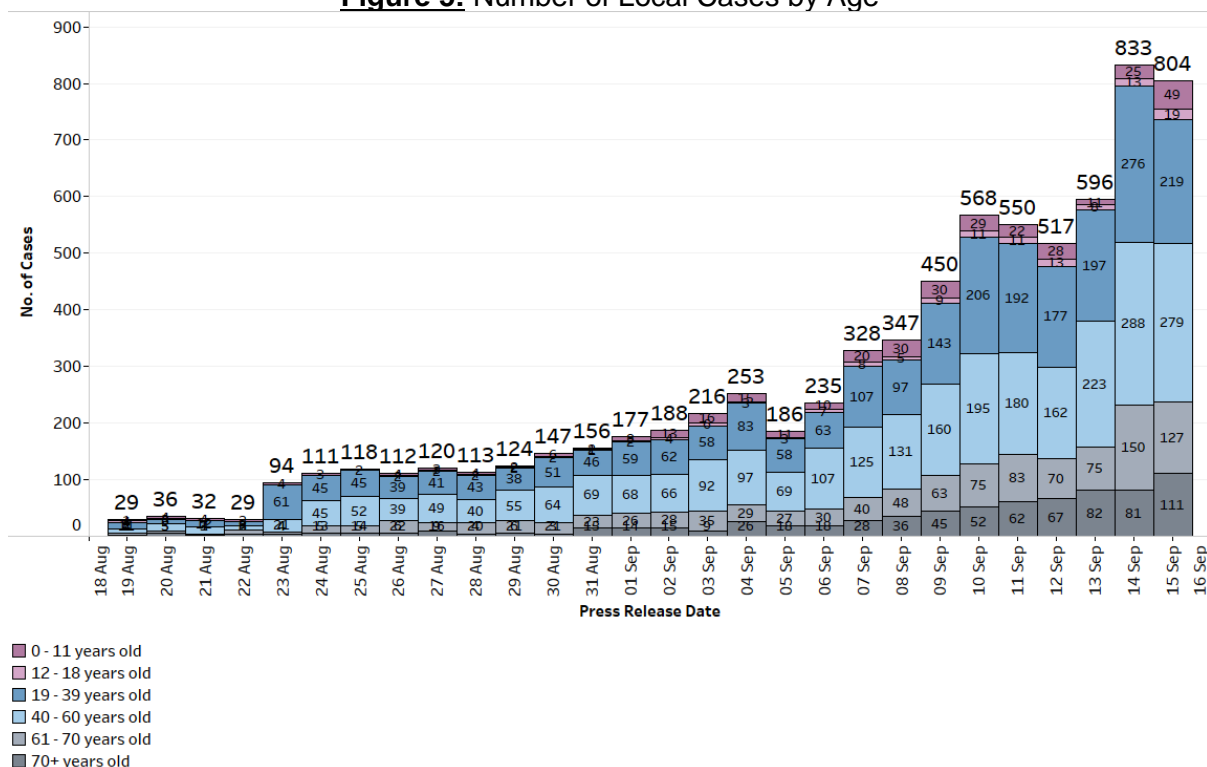
Cluster	New Cases	Total ⁴	Remarks
			residents, detected through proactive testing.
All Saints Home (Jurong East)	1	12	Transmission amongst staff and residents. Of the 12 cases, 10 are residents and 2 are staff. All staff on the affected level have been tested.
Ren Ci @ Bukit Batok Street 52	3	32	Transmission amongst staff and residents. Of the 32 cases, 23 are residents and 9 are staff. All residents and staff are being tested.
Avery Lodge Dormitory	5	87	Intra-dormitory transmission amongst residents, detected through proactive testing. Residents have been placed on Movement Restriction Order, and are being tested.
DHL Supply Chain Advanced Regional Centre (1 Greenwich Drive)	7	71	Workplace transmission with further spread to household contacts of cases. Of the 71 cases, 63 are staff and 8 are household contacts of cases.
Chinatown Complex	11	197	Ongoing workplace transmission, including 154 stallholders and assistants, 7 working as cleaners/ Safe Distancing Ambassador, and 36 household contacts of workers.
Hu Lee Impex (Chin Bee Avenue)	1	70	Workplace transmission with further spread to household contacts of cases. These include 55 staff (including 31 vegetable packers) and 15 household contacts of cases.
PCF Sparkletots Braddell Heights (335 Serangoon Avenue 3)	3	27	Transmission amongst students in the same class, with further spread to household contact of cases. All new cases have been quarantined earlier.
30 Sunview Way construction site	5	175	Workplace transmission, no evidence of spread beyond worksite. All new cases have been quarantined earlier.
Sembcorp Marine Tuas Boulevard Yard	3	102	Most cases are residents of 38 Kian Teck Drive dormitory. All new cases have been quarantined earlier.
Bugis Junction	1	318	Intra-mall transmission amongst staff and visitors, with further transmission to close contacts of staff and visitors.
Toa Payoh Bus Interchange staff	3	231	Workplace transmission amongst bus captains and interchange staff, no evidence of spread to commuters

Cluster	New Cases	Total ⁴	Remarks
Tampines Bus Interchange staff	5	102	Workplace transmission amongst bus captains and interchange staff, no evidence of spread to commuters
Boon Lay Bus Interchange staff	5	218	Workplace transmission amongst bus captains and interchange staff, no evidence of spread to commuters
Bishan Bus Interchange staff	1	41	Workplace transmission amongst bus captains and interchange staff, no evidence of spread to commuters
Clementi Bus Interchange staff	2	65	Workplace transmission amongst bus captains and interchange staff, no evidence of spread to commuters

b) Summary of trends for local cases

7. There are 804 new cases of locally transmitted COVID-19 infection in Singapore, with 770 in the community and 34 in the migrant worker dormitories. Amongst the local cases today are 238 seniors who are above 60 years.

Figure 5: Number of Local Cases by Age

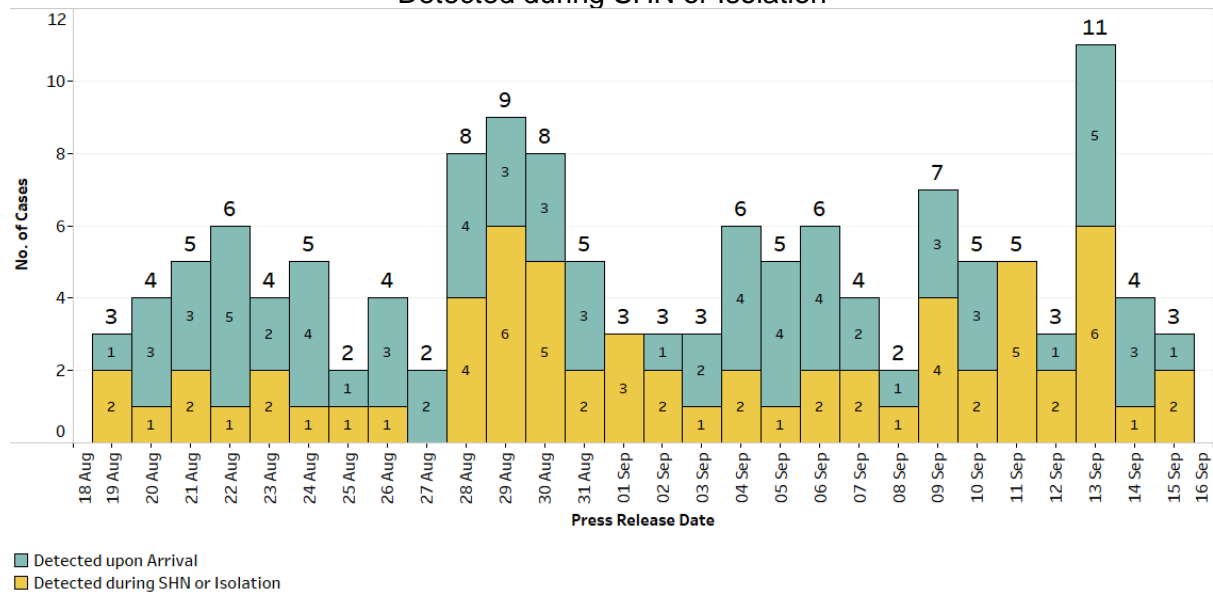


Summary of trends for imported cases

8. There are a total of 3 imported cases, who have already been placed on Stay-

Home Notice (SHN) or isolated upon arrival in Singapore. Of these, 1 was detected upon arrival in Singapore, while 2 developed the illness during SHN or isolation.

Figure 6: Number of Imported Cases by Detected Upon Arrival/
Detected during SHN or Isolation



9. Please refer to MOH’s daily Situation Report (www.moh.gov.sg/covid-19/situation-report) for details.

MINISTRY OF HEALTH
15 SEPTEMBER 2021