



FOR IMMEDIATE RELEASE

7 NEW CASES OF LOCALLY TRANSMITTED COVID-19 INFECTION

As of 4 June 2021, 12pm, the Ministry of Health (MOH) has confirmed and verified that there are 7 new cases of locally transmitted COVID-19 infection. 6 are linked to previous cases, amongst whom 5 have already been placed on quarantine, and 1 was detected through surveillance. The remaining case is currently unlinked.¹ The cases are in the community, and there are no new cases in the dormitories. There are 6 imported cases, who have already been placed on Stay-Home Notice (SHN) upon arrival in Singapore. Amongst the new cases today, 8 are asymptomatic, and were detected from our proactive screening and surveillance, while 5 were symptomatic.

Summary of new cases

		Breakdown by		Breakdown by	
	Number of cases	Already in quarantine/ isolation before detection	Detected from surveillance	Symptomatic	Asymptomatic
Cases in the community	7	5	2	4	3
Cases residing in dormitories	0	0	0	0	0
Imported cases	6	6	0	1	5
Total	13				

2. Overall, the number of new cases in the community has increased from 137 cases in the week before to 139 cases in the past week. The number of unlinked cases in the community has also increased from 21 cases in the week before to 23 cases in the past week. We will continue to closely monitor these numbers, as well as the cases detected through our surveillance programme.

3. Amongst the 188 confirmed cases reported from 29 May to 4 June, 74 cases have tested positive for their serology tests, 99 have tested negative, and 15 serology

¹ This is updated from the afternoon press release as 1 more case has been linked to previous cases following epidemiological investigations.

test results are pending.

Case Details

a) Cases in the community: 7

There are 7 cases in the community today, of whom 6 are linked to previous cases and 1 is currently unlinked.

Currently unlinked case

Detected through surveillance:

Case 64029 is a 19 year-old male Singaporean who is a student at Hwa Chong Institution and was last in school on 18 May. He developed a fever, sore throat and body aches on 2 June and sought medical treatment at a General Practitioner (GP) clinic on 3 June, where he underwent both an antigen rapid test (ART) and a polymerase chain reaction (PCR) test, and was immediately isolated when his ART result came back positive. His PCR test result also came back positive for COVID-19 infection on the same day. His serology test result is pending.

Hong Ye Group cleaners cluster

Already quarantined:

Case 64026 is an 8 year-old male Singaporean who is a student at Fuhua Primary School, and was last in school on 18 May. He is a family member and household contact of Cases 63953² and 63970³, and was placed on quarantine on 1 June. He was tested for COVID-19 on 2 June during quarantine, and developed a cough and fever on the same day. His test result came back positive for COVID-19 on 3 June. His serology result is negative.

Detected through surveillance:

Case 64032 is a 38 year-old male Singaporean who works as a driver at Wongso Limousine Services, and is deployed by Certis Cisco to convey persons placed on quarantine to government quarantine facilities. At work, he dons full personal protective equipment (PPE), including N95 mask, face shield, gown and gloves. He had transported 2 cases in his vehicle on 23 May who were later confirmed to have COVID-19 infection and were linked to the Hong Ye Group cleaners cluster. He developed a fever on 1 June and sought medical treatment at a hospital on 3 June, where he was tested for COVID-19. His test result came back positive for COVID-19 infection on the same day. His serology test result is pending.

² Case 63953 is a 4 year-old male Singaporean who is a student at The Spark Playhouse (406 Hougang Avenue 10). He was confirmed to have COVID-19 infection on 1 June.

³ Case 63970 is a 9 year-old male Singaporean who is a student at Fuhua Primary School. He was confirmed to have COVID-19 infection on 1 June.

Case 63892 cluster⁴

Already quarantined:

Case 64027 is a 34 year-old male Malaysia national who works as a car groomer at Kok Wang Car Grooming. He is a household contact of Cases 63892 and 64028, and was placed on quarantine on 30 May. He was tested for COVID-19 infection on 31 May, and his test result was negative. He is asymptomatic, and was detected when he was tested again on 3 June and his test result came back positive for COVID-19 infection on the same day. His serology test result is negative.

Case 64028 is a 64 year-old female Singaporean who works as a cleaner at Phoenix Entertainment KTV Music Lounge, and had last gone to work on 15 May. She is a household contact of Cases 63892 and 64027, and was placed on quarantine on 30 May. She was tested for COVID-19 infection on 31 May during quarantine, and her test result was negative. She is asymptomatic, and was detected when she was tested again on 2 June. Her test result came back positive for COVID-19 infection on 3 June. Her serology test result is negative for the N antigen, which suggests the presence of early infection. Case 64028 received her first dose of COVID-19 vaccine on 21 April and the second dose on 12 May.

Case 63922 cluster⁵

Already quarantined:

Case 64024 is a 31 year-old male Singaporean who works as a technical officer at Fugro Singapore Land Pte Ltd. He is a family member and household contact of Cases 63922, 63927⁶ and 64025, and was placed on quarantine on 31 May. He is asymptomatic, and was detected when he was tested for COVID-19 on 2 June during quarantine. His test result came back positive for COVID-19 infection on 3 June. His earlier tests from Routine Rostered Testing (RRT) – the last being on 28 May – were all negative for COVID-19 infection. His serology test result is negative for the N antigen, which suggests the presence of early infection. Case 64024 received his first dose of COVID-19 vaccine on 4 May.

Case 64025 is a 31 year-old female Singaporean who works as an administrative staff at Citibank, and was last at work on 28 May. She is a family member and household contact of Cases 63922, 63927 and 64024, and was placed on quarantine on 31 May. She was tested for COVID-19 on 2 June during quarantine, and developed a cough on 3 June. Her test result came back positive for COVID-19 infection on 3 June. Her serology test result is negative.

⁴ Case 63892 is a 68 year-old male Singaporean who works as a manager at Phoenix Entertainment Karaoke TV Music Lounge Pte Ltd. He was confirmed to have COVID-19 infection on 30 May.

⁵ Case 63922 is a 56 year-old female Singaporean who is a homemaker. She was confirmed to have COVID-19 infection on 31 May.

⁶ Case 63927 is a 30 year-old male Singaporean who works as a technician at ST Engineering Innosparks. He was confirmed to have COVID-19 infection on 31 May.

b) Cases residing in dormitories: 0

There are no cases residing in dormitories today.

c) Imported cases: 6

Amongst the 6 imported cases, 2 (Cases 64037 and 64043) are Singaporeans and 4 (Cases 64033, 64036, 64038 and 64041) are Singapore Permanent Residents who returned from India and the UAE.

They had all already been placed on SHN upon arrival in Singapore and were tested while serving SHN.

4. Please refer to the Annexes and MOH's daily Situation Report (www.moh.gov.sg/covid-19/situation-report) for details.

5. Epidemiological investigations are in progress. In the meantime, all the identified close contacts of the cases have been isolated and placed on quarantine, and will be tested at the start and end of their quarantine period so that we can detect asymptomatic cases. We will also conduct serological tests for the close contacts to determine if the cases could have been infected by them.

Update on condition of confirmed cases

6. 23 more cases of COVID-19 infection have been discharged from hospitals or community isolation facilities. In all, 61,580 have fully recovered from the infection and have been discharged from hospitals or community care facilities.

7. There are currently 229 confirmed cases who are still in hospital. Of these, most are stable or improving, and 2 are in critical condition in the intensive care unit. 316 are isolated and cared for at community facilities. These are those who have mild symptoms, or are clinically well but still test positive for COVID-19. 33 have passed away from complications due to COVID-19 infection.

MINISTRY OF HEALTH
4 JUNE 2021

Summary of Local COVID-19 Situation

Figure 1: Number of Community Unlinked and Linked Cases⁷

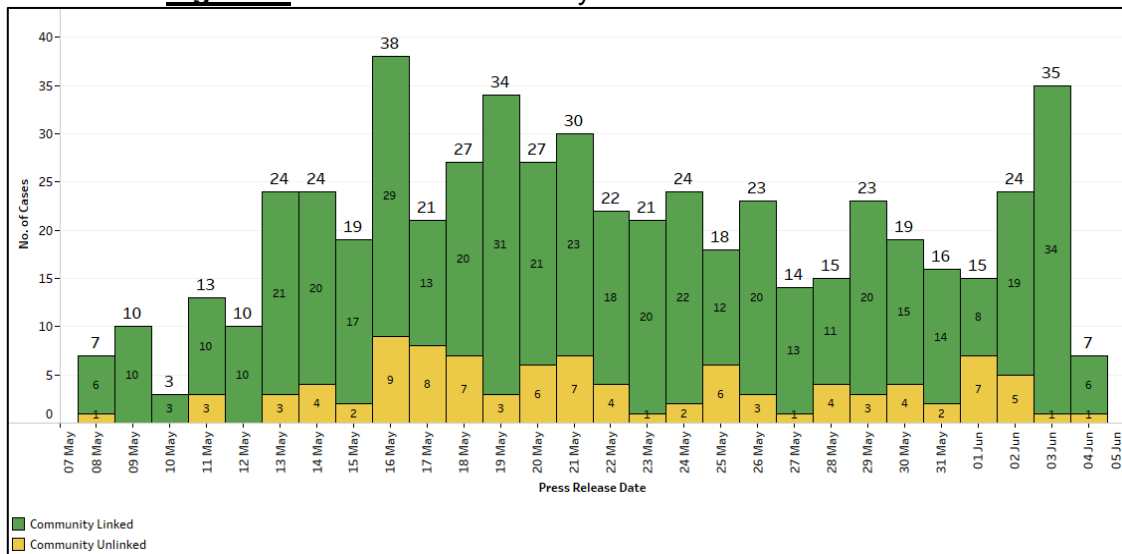
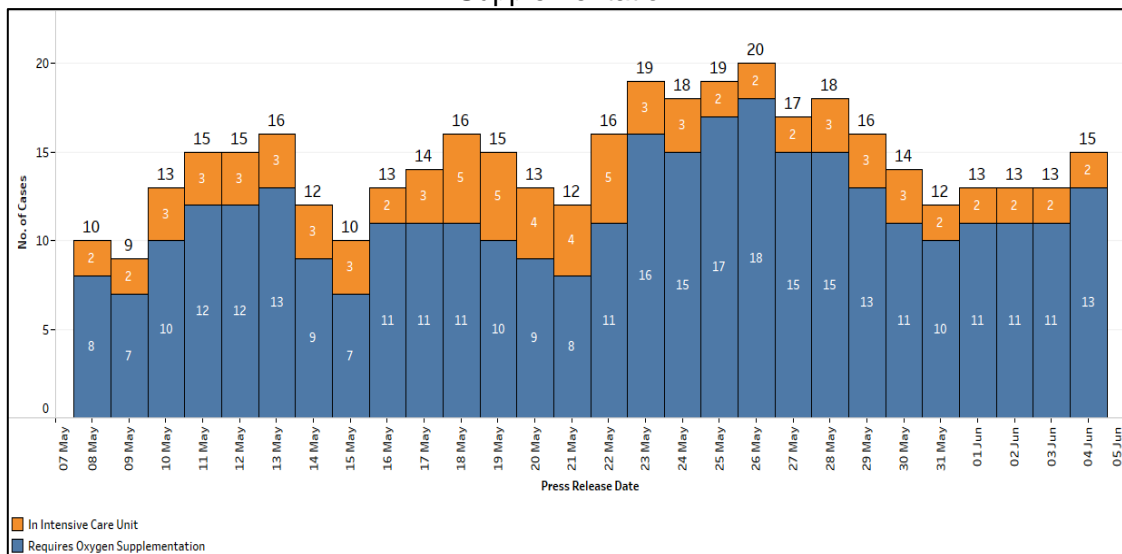


Figure 2: Number of Active Cases in Intensive Care Unit or Requiring Oxygen Supplementation



⁷ Incorporates re-classifications of earlier reported cases.

Open Clusters

Epidemiological investigations and contact tracing have uncovered links between cases.

- i. 3 of the confirmed cases (Cases 63892, 64027 and 64028) are linked to the Case 63892 cluster with the most recent cases (Cases 64027 and 64028) linked to the cluster on 3 June. Case 63892 is a 68 year-old male Singaporean who works as a manager at Phoenix Entertainment Karaoke TV Music Lounge Pte Ltd. He was confirmed to have COVID-19 infection on 30 May.
- ii. 4 of the confirmed cases (Cases 63922, 63927, 64024 and 64205) are linked to the Case 63922 cluster with the most recent cases (Cases 64024 and 64205) linked to the cluster on 3 June. Case 63922 is a 56 year-old female Singaporean who is a homemaker. She was confirmed to have COVID-19 infection on 31 May.
- iii. 27 of the confirmed cases (Cases 63507, 63677, 63740, 63760, 63761, 63765, 63798, 63799, 63802, 63830, 63831, 63832, 63836, 63837, 63839, 63842, 63843, 63898, 63905, 63906, 63907, 63929, 63952, 63953, 63970, 64026 and 64032) are linked to the Hong Ye Group cleaners cluster with the most recent cases (Cases 64026 and 64032) linked to the cluster on 3 June. Case 63507 is a 31 year-old male Singaporean who is employed by Hong Ye Group Pte Ltd as a cleaner at Changi Business Park. He was confirmed to have COVID-19 infection on 19 May.
- iv. 13 of the confirmed cases (Cases 63286, 63292, 63392, 63455, 63456, 63517, 63601, 63609, 63757, 63862, 63863, 63864 and 63999) are linked to the 506 Hougang Avenue 8 cluster with the most recent case (Case 63999) linked to the cluster on 1 June. Case 63286 is a 57 year-old female Malaysia national who is currently unemployed. She was confirmed to have COVID-19 infection on 15 May.
- v. 3 of the confirmed cases (Cases 63973, 63975 and 63978) are linked to the Case 63973 cluster with the most recent cases (Cases 63975 and 63978) linked to the cluster on 2 June. Case 63973 is an 80 year-old female Singaporean who is a retiree. She was confirmed to have COVID-19 infection on 1 June.
- vi. 4 of the confirmed cases (Cases 63964, 63981, 64010 and 64011) are linked to the Case 63964 cluster with the most recent cases (Cases 63981, 64010 and 64011) linked to the cluster on 2 June. Case 63964 is a 61 year-old female Singaporean who works at NTUC FairPrice (Clementi Avenue 3). She was confirmed to have COVID-19 infection on 1 June.
- vii. 27 of the confirmed cases (Cases 63924, 63949, 63950, 63961, 63962, 63974, 63976, 63977, 63979, 63980, 63982, 63983, 63984, 63985, 63986, 63987, 63988, 63989, 63990, 63991, 63992, 63993, 63994, 63995, 63996, 63997 and 64001) are linked to the MINDSville@Napiri cluster with the most recent cases (Cases 63974, 63976, 63977, 63979, 63980, 63982, 63983, 63984, 63985, 63986, 63987, 63988, 63989, 63990, 63991, 63992, 63993, 63994, 63995, 63996, 63997 and 64001) linked to the cluster on 2 June. Case 63924 is a 37 year-old female Singaporean who is a resident at MINDSville@Napiri. She was confirmed to have COVID-19 infection on 31 May.
- viii. 7 of the confirmed cases (Cases 63887, 63908, 63920, 63928, 63940, 63947 and 63998) are linked to the Case 63887 cluster with the most recent case (Case 63998) linked to the cluster on 2 June. Case 63887 is a 65 year-old female Singaporean who is a homemaker. She was confirmed to have COVID-19 infection on 30 May.

- ix. 11 of the confirmed cases (Cases 63853, 63854, 63874, 63883, 63884, 63885, 63886, 63896, 63903, 63958 and 64009) are linked to the NTUC Foodfare (308 Anchorvale Road) cluster with the most recent case (Case 64009) linked to the cluster on 3 June. Case 63853 is a 33 year-old male Malaysia national who works as a kitchen assistant at Hua Zai Eating House Pte Ltd. He was confirmed to have COVID-19 infection on 29 May.
- x. 5 of the confirmed cases (Cases 63714, 63747, 63794, 63909 and 64022) are linked to the Case 63714 cluster with the most recent case (Case 64022) linked to the cluster on 3 June. Case 63714 is a 74 year-old male Singaporean who is a retiree. He was confirmed to have COVID-19 infection on 24 May.
- xi. 4 of the confirmed cases (Cases 63941, 63963, 63966 and 64000) are linked to the Case 63941 cluster with the most recent case (Case 64000) linked to the cluster on 2 June. Case 63941 is a 36 year-old female Vietnam national who is a homemaker. She was confirmed to have COVID-19 infection on 1 June
- xii. 21 of the confirmed cases (Cases 63534, 63535, 63569, 63603, 63624, 63629, 63668, 63669, 63676, 63682, 63694, 63713, 63717, 63726, 63732, 63791, 63793, 63796, 63834, 63871 and 64016) are linked to the McDonald's delivery riders cluster with the most recent case (Case 64016) linked to the cluster on 2 June. Case 63534 is a 27 year-old male Malaysia national who works as a delivery rider for IVIC Logistic Pte Ltd and McDonald's (Bedok Reservoir). He was confirmed to have COVID-19 infection on 20 May.
- xiii. 15 of the confirmed cases (Cases 63160, 63253, 63294, 63300, 63426, 63427, 63428, 63491, 63522, 63526, 63680, 63731, 63751, 63826 and 63943) are linked to the Changi Prison Complex cluster, with the most recent case (Case 63943) linked to the cluster on 1 June. Case 63160 is a 39 year-old male China national who is employed by SATS Food Services Pte Ltd as a chef at Changi Prison Complex. He was confirmed to have COVID-19 infection on 13 May.
- xiv. 10 of the confirmed cases (Cases 63806, 63827, 63847, 63848, 63875, 63876, 63951, 63954, 63955 and 63968) are linked to the Case 63806 cluster with the most recent cases (Cases 63951, 63954 and 63955) linked to the cluster on 1 June, and Case 63968 linked to the cluster on 2 June. Case 63806 is a 49 year-old male Singapore Permanent Resident who works as a manager at Success Consultancy Pte Ltd. He was confirmed to have COVID-19 infection on 28 May.
- xv. 7 of the confirmed cases (Cases 63725, 63742, 63775, 63777, 63846, 63881 and 63960) are linked to the Chevy's Bar and Bistro cluster with the most recent case (Case 63960) linked to the cluster on 1 June. Case 63725 is a 58 year-old female Singaporean who works at Chevy's Bar and Bistro. She was confirmed to have COVID-19 infection on 25 May.
- xvi. 3 of the confirmed cases (Cases 63399, 63900 and 63917) are linked to the Case 63399 cluster with the most recent case (Case 63917) linked to the cluster on 31 May. Case 63399 is a 35 year-old male Malaysia national who is a kitchen crew at Kota Zheng Zong Bak Kut Teh (Serangoon Gardens). He was confirmed to have COVID-19 infection on 17 May.
- xvii. 3 of the confirmed cases (Cases 63743, 63859 and 63938) are linked to the Case 63743 cluster with the most recent case (Case 63938) linked to the cluster on 1 June. Case 63743 is a 24 year-old male Malaysia national who works at McDonald's (The Woodgrove). He was confirmed to have COVID-19 infection on 26 May.

- xviii. 4 of the confirmed cases (Cases 63721, 63748, 63752 and 63933) are linked to the Tektronix cluster with the most recent case (Case 63933) linked to the cluster on 31 May. Case 63721 is a 50 year-old male Singaporean who works as an engineer at Tektronix Southeast Asia Pte Ltd. He was confirmed to have COVID-19 infection on 24 May.
- xix. 7 of the confirmed cases (Case 63660, 63661, 63701, 63702, 63703, 63904 and 63923) are linked to Case 63660 cluster with the most recent case (Case 63923) linked to the cluster on 31 May. Case 63660 is a 31 year-old male Singaporean who works as a property agent with ERA Realty Network Pte Ltd. He was confirmed to have COVID-19 infection on 23 May.
- xx. 3 of the confirmed cases (Cases 63844, 63890 and 63899) are linked to Case 63844 cluster with the most recent cases (Case 63890 and 63899) linked to the cluster on 30 May. Case 63844 is a 49 year-old female Singaporean who works as executive at Eng Soon Chair & Table Hire Service. She was confirmed to have COVID-19 infection on 28 May.
- xxi. 6 of the confirmed cases (Cases 63708, 63709, 63746, 63756, 63894 and 63895) are linked to the Case 63708 cluster with the most recent cases (Cases 63894 and 63895) linked to the cluster on 30 May. Case 63708 is a 15 year-old male Singaporean who is a student at Westwood Secondary School. He was confirmed to have COVID-19 infection on 24 May.
- xxii. 63 of the confirmed cases (Cases 62933, 63037, 63273, 63275, 63276, 63277, 63304, 63306, 63318, 63357, 63363, 63381, 63393, 63406, 63408, 63417, 63448, 63453, 63462, 63463, 63469, 63470, 63471, 63472, 63488, 63508, 63509, 63510, 63520, 63524, 63559, 63560, 63570, 63571, 63577, 63578, 63588, 63591, 63593, 63597, 63598, 63600, 63606, 63607, 63620, 63652, 63653, 63664, 63665, 63675, 63678, 63704, 63707, 63722, 63724, 63728, 63729, 63733, 63734, 63735, 63829, 63849 and 63882) are linked to the JEM/ Westgate cluster with the most recent case (Case 63882) linked to the cluster on 30 May. Case 62933 is a 53 year-old female Singaporean who works as a cleaner at Park Avenue Rochester. She was confirmed to have COVID-19 infection on 7 May.
- xxiii. 5 of the confirmed cases (Cases 63446, 63656, 63773, 63866 and 63867) are linked to the Case 63446 cluster with the most recent cases (Cases 63866 and 63867) linked to the cluster on 29 May. Case 63446 is a 28 year-old male Singaporean who works as an engineer at Patec Pte Ltd. He was confirmed to have COVID-19 infection on 18 May.
- xxiv. 6 of the confirmed cases (Cases 63319, 63434, 63435, 63436, 63860 and 63861) are linked to the Case 63319 cluster, with the most recent cases (Cases 63860 and 63861) linked to the cluster on 29 May. Case 63319 is a 77 year-old female Singaporean who is a homemaker. She was confirmed to have COVID-19 infection on 15 May.
- xxv. 3 of the confirmed cases (Cases 63466, 63618 and 63804) are linked to the Case 63466 cluster with the most recent case (Case 63804) linked to the cluster on 27 May. Case 63466 is a 59 year-old female Singaporean who works at Mary Fashion and Trading. She was confirmed to have COVID-19 infection on 19 May.
- xxvi. 7 of the confirmed cases (Cases 63335, 63460, 63523, 63579, 63758, 63759 and 63762) are linked to the Pacific Law Corporation cluster with the most recent cases (Case 63758, 63759 and 63762) linked to the cluster on 26 May. Case 63335 is a 57 year-old female Singaporean who works as an administrative personnel at Pacific Law Corporation. She was confirmed to have COVID-19 infection on 16 May.

- xxvii. 4 of the confirmed cases (Cases 63515, 63612, 63654 and 63741) are linked to the Case 63515 cluster with the most recent case (Case 63741) linked to the cluster on 25 May. Case 63515 is a 34 year-old male Singaporean who works as a technician at Singapore Refining Company Pte Ltd. He was confirmed to have COVID-19 infection on 20 May.
- xxviii. 5 of the confirmed cases (Case 63622, 63696, 63697, 63698, and 63723) are linked to the Harvest @ Woodlands dormitory cluster with the most recent case (Case 63723) linked to the cluster on 24 May. Case 63622 is a 46 year-old male Malaysia national who works as a construction worker at H&W Communications Pte Ltd. He was confirmed to have COVID-19 infection on 22 May.
- xxix. 32 of the confirmed cases (Cases 63131, 63184, 63185, 63186, 63187, 63188, 63251, 63259, 63268, 63279, 63281, 63282, 63285, 63288, 63296, 63297, 63298, 63325, 63337, 63353, 63386, 63390, 63391, 63400, 63422, 63424, 63438, 63481, 63663, 63667, 63706 and 63736) are linked to the Learning Point cluster, with the most recent case (Case 63736) linked to the cluster on 25 May. Case 63131 is a 50 year-old female Singaporean who works as a tutor at Learning Point. She was confirmed to have COVID-19 infection on 12 May.
- xxx. 8 of the confirmed cases (Cases 63236, 63349, 63370, 63421, 63506, 63621, 63641 and 63727) are linked to the Case 63236 cluster, with the most recent case (Case 63727) linked to the cluster on 25 May. Case 63236 is a 53 year-old male Singaporean who works as a personal chauffeur. He was confirmed to have COVID-19 infection on 14 May.
- xxxi. 7 of the confirmed cases (Cases 63317, 63320, 63350, 63439, 63610, 63679 and 63739) are linked to the Marina Bay Sands Casino dealer cluster, with the most recent case (Case 63739) linked to the cluster on 25 May. Case 63317 is a 36 year-old male Malaysia national who works as a dealer at Marina Bay Sands Casino. He was confirmed to have COVID-19 infection on 16 May.
- xxxii. 3 of the confirmed cases (Cases 63543, 63551 and 63700) are linked to Case 63543 cluster with the most recent case (Case 63700) linked to the cluster on 24 May. Case 63543 is a 40 year-old male Singaporean who works as an operations personnel at The Meatery SG. He was confirmed to have COVID-19 infection on 21 May.
- xxxiii. 6 of the confirmed cases (Cases 63479, 63485, 63533, 63592, 63627 and 63699) are linked to the Case 63479 cluster with the most recent case (Case 63699) linked to the cluster on 23 May. Case 63479 is a 49 year-old female Singapore Permanent Resident who is a homemaker. She was confirmed to have COVID-19 infection on 20 May.
- xxxiv. 48 of the confirmed cases (Cases 62541, 62557, 62561, 62567, 62568, 62573, 62574, 62582, 62599, 62615, 62635, 62643, 62648, 62680, 62687, 62697, 62713, 62714, 62715, 62717, 62721, 62722, 62723, 62724, 62731, 62732, 62754, 62781, 62784, 62786, 62787, 62790, 62791, 62794, 62795, 62801, 62803, 62807, 62808, 62816, 63007, 63008, 63009, 63104, 63168, 63248, 63617 and 63630) are linked to the Tan Tock Seng Hospital cluster, with the most recent case (Case 63630) linked to the cluster on 23 May. Case 62541 is a 46 year-old female who is a nurse at Tan Tock Seng Hospital, and was deployed at Ward 9D, a general ward. She was confirmed to have COVID-19 infection on 27 April.
- xxxv. 4 of the confirmed cases (Case 63376, 63476, 63537 and 63681) are linked to Case 63376 cluster with the most recent case (Case 63681) linked to the cluster on 24 May. Case 63376 is a 46 year-old female Singaporean who is an investment banker at DBS. She was confirmed to have COVID-19 infection on 17 May.

- xxxvi. 108 of the confirmed cases (Cases 62873, 62940, 62941, 62942, 62945, 62971, 62972, 62998, 63005, 63015, 63026, 63047, 63055, 63059, 63060, 63061, 63070, 63071, 63072, 63074, 63084, 63091, 63094, 63095, 63096, 63097, 63098, 63100, 63109, 63115, 63117, 63118, 63119, 63120, 63122, 63125, 63126, 63128, 63129, 63132, 63135, 63136, 63138, 63139, 63140, 63141, 63146, 63148, 63149, 63150, 63165, 63167, 63169, 63177, 63178, 63179, 63180, 63181, 63191, 63192, 63194, 63195, 63219, 63221, 63235, 63238, 63239, 63240, 63242, 63243, 63252, 63255, 63256, 63257, 63269, 63270, 63291, 63305, 63316, 63324, 63343, 63344, 63346, 63347, 63351, 63382, 63387, 63389, 63416, 63423, 63431, 63444, 63445, 63447, 63452, 63458, 63459, 63464, 63473, 63474, 63518, 63519, 63528, 63553, 63586, 63605, 63615 and 63616) are linked to the Changi Airport Terminal 3 cluster, with the most recent cases (Cases 63605, 63615 and 63616) linked to the cluster on 22 May. Case 62873 is an 88 year-old male Singaporean who is employed by Ramky Cleantech Services Pte Ltd as a cleaner deployed at Changi Airport Terminal 3. He was confirmed to have COVID-19 infection on 5 May.
- xxxvii. 3 of the confirmed cases (Cases 63290, 63383 and 63384) are linked to the Case 63290 cluster, with the most recent cases (Cases 63383 and 63384) linked to the cluster on 17 May. Case 63290 is a 64 year-old female Singapore Permanent Resident who is currently unemployed. She was confirmed to have COVID-19 infection on 15 May.
- xxxviii. 3 of the confirmed cases (Cases 63414, 63584 and 63585) are linked to the Case 63414 cluster with the most recent cases (Cases 63584 and 63585) linked to the cluster on 21 May. Case 63414 is a 40 year-old male Singaporean who works as a vending machine loader at Warburg Pte Ltd, and a food delivery rider for Deliveroo and Grab. He was confirmed to have COVID-19 infection on 18 May.
- xxxix. 3 of the confirmed cases (Cases 63513, 63516 and 63572) are linked to the Case 63516 cluster with the most recent case (Case 63572) linked to the cluster on 21 May. Case 63516 is a 28 year-old female Singaporean who is a homemaker. She was confirmed to have COVID-19 infection on 20 May.
- xl. 3 of the confirmed cases (Cases 63487, 63574 and 63581) are linked to the Case 63487 cluster with the most recent cases (Cases 63574 and 63581) linked to the cluster on 21 May. Case 63487 is a 19 year-old female Malaysia national who is a student at Singapore Polytechnic. She was confirmed to have COVID-19 infection on 19 May.
- xli. 9 of the confirmed cases (Cases 63271, 63278, 63412, 63425, 63442, 63461, 63468, 63477 and 63511) are linked to the Jin Tai Tong Food Industries cluster, with the most recent case (Case 63511) linked to the cluster on 20 May. Case 63271 is a 55 year-old male Singaporean who works as a warehouse assistant at Jin Tai Mart. He was confirmed to have COVID-19 infection on 15 May.
- xlii. 3 of the confirmed cases (Cases 63336, 63388 and 63440) are linked to the Case 63336 cluster, with the most recent case (Case 63440) linked to the cluster on 18 May. Case 63336 is a 22 year-old female Singaporean who works at Invade Industry Pte Ltd. She was confirmed to have COVID-19 infection on 16 May.
- xliii. 4 of the confirmed cases (Cases 63166, 63241, 63280 and 63365) are linked to the WOK HEY cluster, with the most recent case (Case 63365) linked to the cluster on 17 May. Case 63166 is a 22 year-old male Singaporean who works as a cook at WOK HEY (White Sands). He was confirmed to have COVID-19 infection on 13 May.
- xliv. 3 of the confirmed cases (Cases 62969, 63083 and 63092) are linked to the Grab cluster, with the most recent case (Case 63092) linked to the cluster on 11 May. Case 62969 is a

38 year-old male Singaporean who works as a private hire car driver with Grab. He was confirmed to have COVID-19 infection on 8 May.

- xlv. 7 of the confirmed cases (Cases 62113, 62348, 62349, 62350, 62365, 62485 and 63078) are linked to the MT ALLI cluster, with the most recent case (Case 63078) linked to the cluster on 10 May. Case 62113 is a 39 year-old Indonesian national who is a sea crew on board bunker tanker MT ALLI, and was confirmed to have COVID-19 infection on 16 April.
- xlvi. 5 of the confirmed cases (Cases 62824, 62877, 62906, 62938 and 62939) are linked to the Pasir Panjang Terminal cluster, with the most recent cases (Case 62938 and 62939) linked to the cluster on 7 May. Case 62824 is a 59 year-old male Singaporean who is employed by GKE Express Logistics Pte Ltd as a trailer truck driver at Brani Terminal and Pasir Panjang Terminal. He was confirmed to have COVID-19 infection on 4 May.

Summary of Cases in the Community

	Case Number	Date of Confirmation	Onset date	Age (years)	Gender	Nationality	Exposure	Key Places Visited after Symptoms Onset/ Swab (for asymptomatic cases)	Links/ Cluster
#	64024	3 Jun	Asymptomatic	31	M	SC	Local linked		Case 63922 cluster
#	64025	3 Jun	3 Jun	31	F	SC	Local linked		Case 63922 cluster
#	64026	3 Jun	2 Jun	8	M	SC	Local linked		Hong Ye Group cleaners cluster
#	64027	3 Jun	Asymptomatic	34	M	Malaysia	Local linked		Case 63892 cluster
#	64028	3 Jun	Asymptomatic	64	F	SC	Local linked		Case 63892 cluster
*	64029	3 Jun	2 Jun	19	M	SC	Local unlinked		
*	64032	3 Jun	1 Jun	38	M	SC	Local linked		Hong Ye Group cleaners cluster

Cases marked (#) had already been quarantined earlier.

Cases marked (*) were detected as a result of our proactive screening and surveillance.

Summary of Imported Cases

	Case Number	Date of Confirmation	Onset date	Age (years)	Gender	Nationality	Travel History	Exposure	Links	Cluster
~	64033	3 Jun	Asymptomatic	19	F	PR	India	Imported	Contact of Cases 63944 and 63946	
~	64036	4 Jun (Serology Positive)	3 Jun	24	F	PR	UAE	Imported	Contact of Case 63959	
~	64037	4 Jun	Asymptomatic	61	M	SC	India	Imported		
~	64038	4 Jun	Asymptomatic	42	M	PR	India	Imported		
~	64041	4 Jun	Asymptomatic	46	M	PR	India	Imported		
~	64043	4 Jun	Asymptomatic	34	M	SC	India	Imported		

Cases marked (~) had already been placed on Stay-Home Notice upon arrival in Singapore.

Public Places Visited by Cases in the Community during Infectious Period⁸

Date	Time	Location (Address)
21 May	0930h to 2130h	Holland Piazza (3 Lorong Liput) <ul style="list-style-type: none"> Tiger Sugar
21 May	0800h to 0850h	Yuhua Community Club (90 Boon Lay Way)
21 May	0800h to 2200h	Westgate (3 Gateway Drive)
21 May	0845h to 0915h	Quan Shui Wet Market (156 Bukit Batok Street 11)
21 May	0915h to 0950h	Le Quest Mall (4 Bukit Batok Street 41) <ul style="list-style-type: none"> FairPrice Finest
21 May	1030h to 1100h	Sri Murugan Hill Temple (931 Upper Bukit Timah Road)
21 May	1100h to 1600h	Punggol Plaza (168 Punggol Field)
21 May	1100h to 2100h	Indobowl and Royz et Vous (37 & 39 Sultan Gate)
21 May	1105h to 1155h	Al Forno (East Coast) Pte Ltd (400 East Coast Road)
21 May	1415h to 1500h	POSB Bukit Batok Central Branch (636 Bukit Batok Central)
21 May	1445h to 2100h	Westgate (3 Gateway Drive) <ul style="list-style-type: none"> Pizza Hut
21 May	1515h to 1600h	JEM (50 Jurong Gateway Road) <ul style="list-style-type: none"> FairPrice Xtra
21 May	1600h to 1635h	Da Jin Factory Building (362 Upper Paya Lebar Road)
21 May	1720h to 1750h	PLQ Mall (10 Paya Lebar Road)
21 May	1720h to 1755h	NTP+ (151 Lorong Chuan) <ul style="list-style-type: none"> The Social Alley, Singapore
21 May	1810h to 1940h	Parkway Parade (80 Marine Parade Road)
21 May	1820h to 1900h	Keat Hong Shopping Centre (253 Choa Chu Kang Avenue 1) <ul style="list-style-type: none"> KFC
21 May	1905h to 1940h	VivoCity (1 HarbourFront Walk) <ul style="list-style-type: none"> DAISO
21 May	1940h to 2010h	VivoCity (1 HarbourFront Walk) <ul style="list-style-type: none"> Toys"R"Us
21 May	2010h to 2110h	Bukit Batok Golf Range (2 Bukit Batok West Avenue 7)
21 May	2100h to 2130h	Boon Lay Shopping Centre (221 Boon Lay Place) <ul style="list-style-type: none"> NTUC FairPrice

⁸ Excludes residence, workplaces, healthcare facilities and public transport. This list will be updated on a rolling 14-days basis, i.e. one incubation period, and as epidemiological investigations progress.

Date	Time	Location (Address)
22 May	0000h to 0400h	The Woodgrove (30 Woodlands Avenue 1) • McDonald's
22 May	0740h to 2000h	West Mall (1 Bukit Batok Central Link) • Subway
22 May	0830h to 0930h	Fu Nan Traditional Chinese Medicine Centre (152 Bukit Batok Street 11)
22 May	1220h to 1300h	Hup Choon Eating House (1 Binjai Park)
22 May	1230h to 1300h	NTUC FairPrice (1 Jalan Bukit Merah)
22 May	1240h to 1310h	NTUC FairPrice (1 Jalan Bukit Merah)
22 May	1320h to 1530h	NTUC FairPrice (301 Yishun Avenue 2)
22 May	1435h to 1510h	Sunshine Place (475 Choa Chu Kang Avenue 3) • Giant Supermarket
22 May	1500h to 2100h	Westgate (3 Gateway Drive) • Pizza Hut
22 May	1320h to 1530h	NTUC FairPrice (301 Yishun Avenue 2)
22 May	1515h to 1620h	Joo Chiat Complex (1 Joo Chiat Road)
22 May	1520h to 1625h	Mustafa Centre (145 Syed Alwi Road)
22 May	1530h to 1630h	Bukit Timah Plaza (1 Jalan Anak Bukit) • FairPrice Finest
22 May	1605h to 1700h	KINEX (11 Tanjong Katong Road) • Eccellente by HAO Mart
22 May	1620h to 1655h	Le Quest Mall (4 Bukit Batok Street 41) • FairPrice Finest
22 May	1705h to 1740h	Lucky Plaza (304 Orchard Road)
22 May	1710h to 1800h	Hafary Pte Ltd (560 Balestier Road)
22 May	1730h to 1800h	Bukit Timah Plaza (1 Jalan Anak Bukit) • FairPrice Finest
22 May	1900h to 2015h	Lemongrass (476 Upper Serangoon View)
23 May	0815h to 0920h	Sheng Siong Supermarket (108 McNair Road)
23 May	1100h to 1225h	Jurong Point (1 Jurong West Central 2)
23 May	1100h to 2100h	Indobowl and Royz et Vous (37 & 39 Sultan Gate)
23 May	1320h to 1530h	NTUC FairPrice (301 Yishun Avenue 2)
23 May	1430h to 1535h	NTUC FairPrice (301 Yishun Avenue 2)
23 May	1755h to 1830h	Changi City Point (5 Changi Business Park Central 1)
23 May	1955h to 2030h	NEX (23 Serangoon Central) • FairPrice Xtra

Date	Time	Location (Address)
24 May	0600h to 1500h	The Woodgrove (30 Woodlands Avenue 1) • McDonald's
24 to 28 May	0600h to 1900h	Food Hub (455 Sengkang West Avenue)
24 to 29 May	1000h to 2200h	Hougang Green Shopping Mall (21 Hougang Street 51) • Fu Fa Food Court
24 May	1155h to 1625h	Ramada (16 Ah Hood Road)
24 May	1230h to 1300h	D'FoodStop@ABC (2 Jalan Bukit Merah)
24 May	1235h to 1310h	NTUC FairPrice (30 Bendemeer Road)
24 May	1320h to 1530h	NTUC FairPrice (301 Yishun Avenue 2)
24 May	1535h to 1640h	Funan (107 North Bridge Road) • Popsical
24 May	1745h to 1845h	Yew Tee Community Club (20 Choa Chu Kang Street 52)
24 May	2025h to 2100h	Causeway Point (1 Woodlands Square)
25 May	0920h to 1000h	Sheng Siong Supermarket (108 McNair Road)
25 May	1230h to 1430h	Beauty World Centre (144 Upper Bukit Timah Road) • Beauty World Thai Massage
25 May	1500h to 1550h	Tradehub 21 (18 Boon Lay Way) • Rodalink Jurong East Bicycle Megastore
25 May	1535h to 1630h	Sheng Siong Supermarket (455 Sengkang West Avenue)
25 May	1800h to 1900h	Al Barakah Health and Beauty Mart (302 Woodlands Street 31)
26 to 27 May	0900h to 1700h	Sri Murugan Trading Pte Ltd (308 Anchorvale Road)
26 May	0900h to 2100h	NTUC Foodfare (308 Anchorvale Road)
26 May	0905h to 1200h	McDonald's (293 Yishun Street 22)
26 May	1130h to 2100h	Tiong Bahru Plaza (298 Tiong Bahru Road) • 328 Katong Laksa
26 May	1355h to 1700h	VivoCity (1 HarbourFront Walk)
26 May	1320h to 1530h	NTUC FairPrice (301 Yishun Avenue 2)
26 May	1400h to 1430h	New Trendy Salon LLP (84 Redhill Lane)
26 May	1430h to 1500h	One Commonwealth (1 Commonwealth Lane) • Passion Bike
26 May	1430h to 1535h	NTUC FairPrice (301 Yishun Avenue 2)
26 May	1710h to 1740h	Giant (256 Bangkit Road)
26 May	1850h to 2025h	Decathlon – Singapore Lab (230 Stadium Boulevard)
26 May	2100h to 2130h	Wenxintang Spa (316B Ang Mo Kio Street 31)

Date	Time	Location (Address)
26 May	2115h to 2220h	People's Park Centre (101 Upper Cross Street)
27 May	0000h to 0730h	NTUC Foodfare (308 Anchorvale Road)
27 to 31 May	0000h to 2359h	Tuas Amenity Centre (71 Pioneer Road)
27 to 28 May	0600h to 2100h	NTUC Foodfare (308 Anchorvale Road)
27 to 28 May	0630h to 2200h	Hougang Green Shopping Mall (21 Hougang Street 51) <ul style="list-style-type: none"> • Fu Fa Food Court
27 May	0750h to 0820h	Sheng Siong Supermarket (417 Fernvale Link)
27 May	0900h to 2100h	NTUC Foodfare (308 Anchorvale Road)
27 May	0905h to 1030h	Bukit Merah Community Centre (4000 Jalan Bukit Merah)
27 May	0915h to 1400h	LeVel 33 (8 Marina Boulevard)
27 May	0945h to 1100h	Jurong Port Pass/ Permit Office (37 Jurong Port Road)
27 May	1100h to 2230h	Chop Joo Hiong Eating House (237 Serangoon Avenue 3)
27 May	1125h to 2035h	Tiong Bahru Plaza (298 Tiong Bahru Road) <ul style="list-style-type: none"> • 328 Katong Laksa
27 May	1240h to 1345h	NTUC FairPrice (50 Havelock Road)
27 May	1400h to 2200h	Atatzcut Singapore (348 Bedok Road)
27 May	1605h to 1810h	Health Management Centre (809 French Road)
27 May	1700h to 1730h	Sheng Siong Supermarket (200 Woodlands Industrial Park E7)
27 May	1725h to 1825h	GP Motoring (282 Macpherson Road)
27 May	1755h to 2030h	Lucky Plaza (304 Orchard Road)
27 May	2230h to 2300h	Atatzcutz Singapore (348 Bedok Road)
28 May	0800h to 1800h	Orchard Hotel Singapore (442 Orchard Road)
28 May	0900h to 2100h	NTUC Foodfare (308 Anchorvale Road)
28 May	1010h to 1155h	Carole Unisex Salon (620 Hougang Avenue 8)
28 May	1100h to 2200h	Hougang Green Shopping Mall (21 Hougang Street 51) <ul style="list-style-type: none"> • Pizza Hut
28 to 31 May	1200h to 1900h	Atatzcutz Singapore (348 Bedok Road)
28 May	1300h to 1340h	Masjid Jamek Queenstown (946 Margaret Drive)
28 May	1615h to 1650h	Sheng Siong Supermarket (455 Sengkang West Avenue)
28 May	1930h to 0000h	NTUC Foodfare (308 Anchorvale Road)
28 May	1955h to 2055h	Seletar Mall (33 Sengkang West Avenue) <ul style="list-style-type: none"> • NTUC FairPrice

Date	Time	Location (Address)
29 May	0000h to 0730h	NTUC Foodfare (308 Anchorvale Road)
29 May	0110h to 0530h	Marina Bay Sands Casino (10 Bayfront Avenue)
29 May	0600h to 1300h	NTUC Foodfare (308 Anchorvale Road)
29 May	0630h to 1300h	Hougang Green Shopping Mall (21 Hougang Street 51) <ul style="list-style-type: none"> Fu Fa Food Court
29 May	0900h to 1300h	NTUC Foodfare (308 Anchorvale Road)
29 May	1020h to 1100h	The Seletar Mall (33 Sengkang West Avenue)
29 May	1315h to 1500h	Chien Chi Tow Healthcare (78 Redhill Lane)
29 May	1555h to 1645h	Peninsula Plaza Singapore (111 North Bridge Road)
29 May	1815h to 1915h	Thong Sheng Motors Trading (7 Pioneer Road North)
29 May	1820h to 2000h	VivoCity (1 HarbourFront Walk) <ul style="list-style-type: none"> FairPrice Xtra
29 May	1840h to 1950h	ESR BizPark@Chai Chee (750A Chai Chee Road) <ul style="list-style-type: none"> Decathlon
29 to 30 May	1930h to 0000h	NTUC Foodfare (308 Anchorvale Road)
29 May	2000h to 2035h	Prime Supermarket (763 Jurong West Street 75)
29 May	2030h to 2055h	Plaza Singapura (68 Orchard Road) <ul style="list-style-type: none"> Cold Storage
29 May	2030h to 2115h	Plaza Singapura (68 Orchard Road)
30 May	1100h to 2200h	Hougang Green Shopping Mall (21 Hougang Street 51) <ul style="list-style-type: none"> Pizza Hut
30 May	1125h to 1200h	Ang Mo Supermarket (642 Hougang Avenue 8)
30 May	1200h to 1300h	Bugis Street (3 New Bugis Street)
30 May	1800h to 1900h	Hong Yang Health Products & Foot Reflexology Centre (38 Beo Crescent)
30 to 31 May	2005h to 0005h	Marina Bay Sands Casino (10 Bayfront Avenue)
1 Jun	1000h to 1230h	JIC Inspection Services (53 Pioneer Road)
1 Jun	1100h to 1230h	VICOM Inspection Centre (511 Bukit Batok Street 2)
1 Jun	1955h to 2030h	Seletar Mall (33 Sengkang West Avenue) <ul style="list-style-type: none"> NTUC FairPrice

Note: Public places marked with (*) were visited by cases linked to the Tan Tock Seng Hospital cluster during their likely infectious period.

Those who had been identified as close contacts of confirmed cases would already have been notified by MOH.

As a precautionary measure, persons who had been at these locations during the specified timings should monitor their health closely for 14 days from their date of visit. They should see a doctor promptly if they develop symptoms of acute respiratory infection (such as cough, sore throat and runny nose), as well as fever and loss of taste or smell, and inform the doctor of their exposure history.

Individuals may access the SafeEntry Location Matching Self-Check service via the TraceTogether App or at <https://wereyouthere.safeentry.gov.sg> to check whether they were at these locations during the specified timings, based on their own SafeEntry records.

There is no need to avoid places where confirmed cases of COVID-19 have been. The National Environment Agency will engage the management of affected premises to provide guidance on cleaning and disinfection.