



FOR IMMEDIATE RELEASE

UPDATE ON LOCAL COVID-19 SITUATION

Summary of local situation

- 664 cases are currently warded in hospital. There are currently 26 cases of serious illness requiring oxygen supplementation, and 7 in critical condition in the intensive care unit (ICU).
- Over the last 28 days, the percentage of unvaccinated who became severely ill or died is 5.2%, while that for the fully vaccinated is 0.8%.
- As of 8 September 2021, 81% of our population has completed their full regimen/ received two doses of COVID-19 vaccines, and 83% has received at least one dose.
- As of 9 September 2021, 12pm, the Ministry of Health (MOH) has detected a total of 457 new cases of COVID-19 infection in Singapore today.

Condition of hospitalised cases

As of 9 September 2021, 12pm, 664 COVID-19 cases are currently warded in hospital. Most are well and under observation. There are currently 26 cases of serious illness requiring oxygen supplementation, and 7 in critical condition in the ICU. Of those who have fallen very ill, 28 are seniors above 60 years.

2. Case 65636, a 62 year-old male Singaporean, has passed away from complications due to COVID-19 infection on 6 September 2021. He had been conveyed to Singapore General Hospital for an unrelated medical condition on 20 July and tested positive for COVID-19 infection on 21 July. He had not been vaccinated against COVID-19, and had a history of cancer and bronchiectasis. In total, 57 have passed away from complications due to COVID-19 infection.

Figure 1: Number of Active Cases in ICU or Requiring Oxygen Supplementation

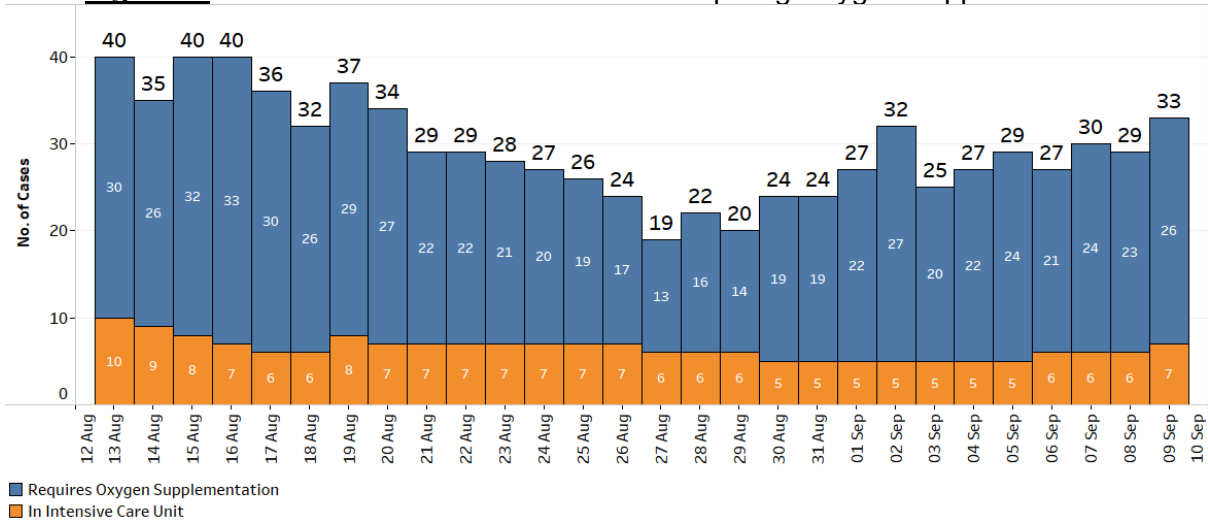
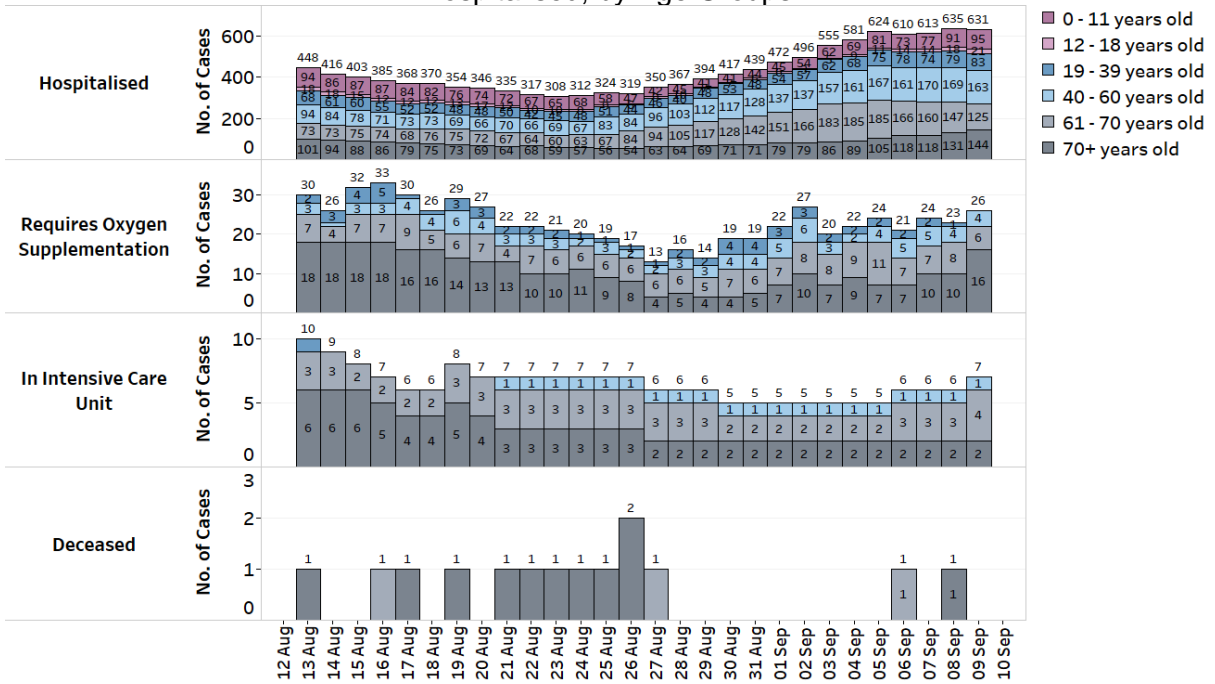
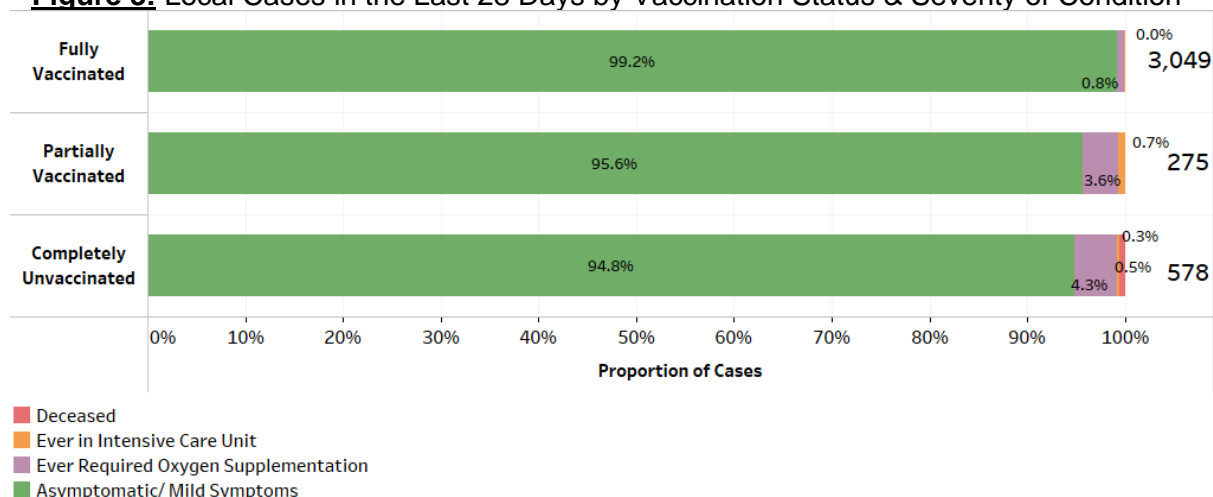


Figure 2: Deaths and Active Cases in ICU, Requiring Oxygen Supplementation or Hospitalised, by Age Groups



3. Over the last 28 days, the percentage of unvaccinated who became severely ill or died is 5.2%, while that for the fully vaccinated is 0.8%.

Figure 3: Local Cases in the Last 28 Days by Vaccination Status & Severity of Condition¹



Update on vaccination progress

4. As of 8 September 2021, 81% of our population has completed their full regimen/ received two doses of COVID-19 vaccines, and 83% has received at least one dose.

5. We have administered a total of 8,823,534 doses of COVID-19 vaccines under the national vaccination programme (Pfizer-BioNTech Comirnaty and Moderna), covering 4,544,155 individuals, with 4,396,578 individuals having completed the full vaccination regimen. In addition, 175,027 doses of other vaccines recognised in the World Health Organization’s Emergency Use Listing (WHO EUL) have been administered, covering 86,379 individuals.

Locally transmitted COVID-19 cases

6. As of 9 September 2021, 12pm, there are 457 cases of COVID-19 infection, comprising 450 local cases and 7 imported cases.

a) Active clusters under close monitoring

7. We are closely monitoring the clusters listed below, which have already been ringfenced through tracing, testing and isolation.

Figure 4: Large Clusters with New Cases

Cluster	New Cases	Total ²	Remarks
Hu Lee Impex	9	22	Primarily workplace transmission, no evidence of spread beyond workplace and household contacts of cases

¹ Fully vaccinated - more than 14 days after completing vaccination regimen (both doses of the vaccine or one dose for recovered individuals).

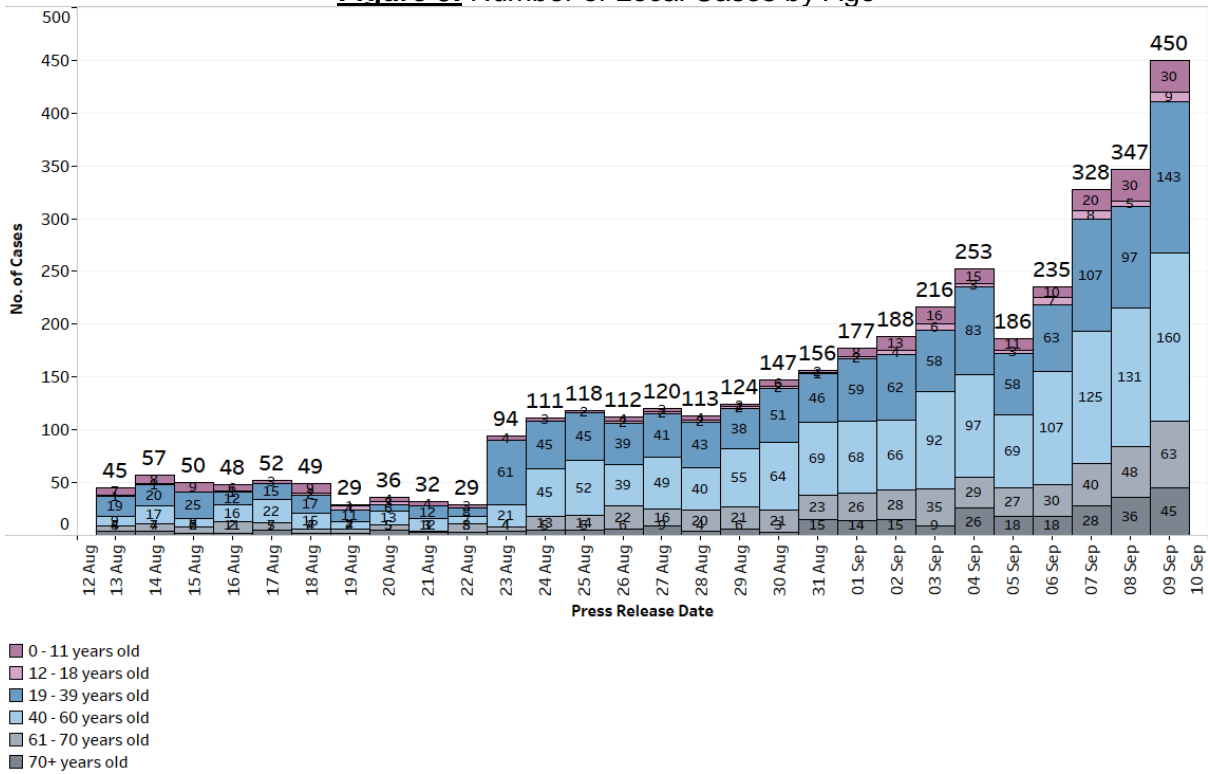
² Includes new cases added today.

Cluster	New Cases	Total ²	Remarks
Sembcorp Marine Tuas Boulevard Yard	14	32	Most cases are residents of 38 Kian Teck Drive dormitory; new cases have all been quarantined earlier
Changi General Hospital	2	61	Transmission limited to facility management staff, no transmission to healthcare workers and patients; cases declining
Bugis Junction	8	305	Intra-mall transmission amongst staff and visitors; all new cases quarantined earlier
Toa Payoh Bus Interchange staff	6	190	Workplace transmission amongst bus captains and interchange staff, no evidence of spread to commuters
Tampines Bus Interchange staff	1	45	Workplace transmission amongst bus captains and interchange staff, no evidence of spread to commuters
Boon Lay Bus Interchange staff	6	152	Workplace transmission amongst bus captains and interchange staff, no evidence of spread to commuters
Punggol Bus Interchange staff	2	41	Workplace transmission amongst bus captains and interchange staff, no evidence of spread to commuters
Jurong East Bus Interchange staff	1	43	Workplace transmission amongst bus captains and interchange staff, no evidence of spread to commuters
North Coast Lodge	1	200	Intra-dormitory transmission; new cases have all been quarantined earlier; cases declining
30 Sunview Way construction site	2	37	Workplace transmission, no evidence of spread beyond worksite; cases detected from proactive testing

b) Summary of trends for local cases

8. There are 450 local cases with COVID-19 infection today. Amongst the local cases today are 108 seniors who are above 60 years.

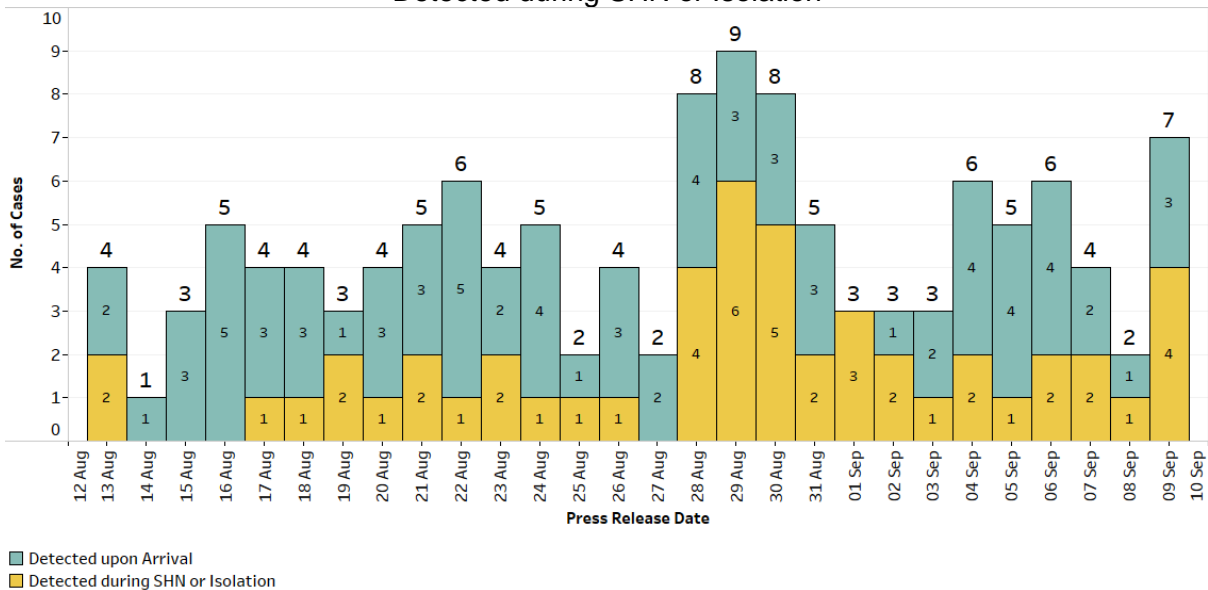
Figure 5: Number of Local Cases by Age



Summary of trends for imported cases

9. There are a total of 7 imported cases, who have already been placed on Stay-Home Notice (SHN) or isolated upon arrival in Singapore. Of these, 3 were detected upon arrival in Singapore, while 4 developed the illness during SHN or isolation.

Figure 6: Number of Imported Cases by Detected Upon Arrival/ Detected during SHN or Isolation



10. Please refer to MOH's daily Situation Report (www.moh.gov.sg/covid-19/situation-report) for details.