



FOR IMMEDIATE RELEASE

UPDATE ON LOCAL COVID-19 SITUATION

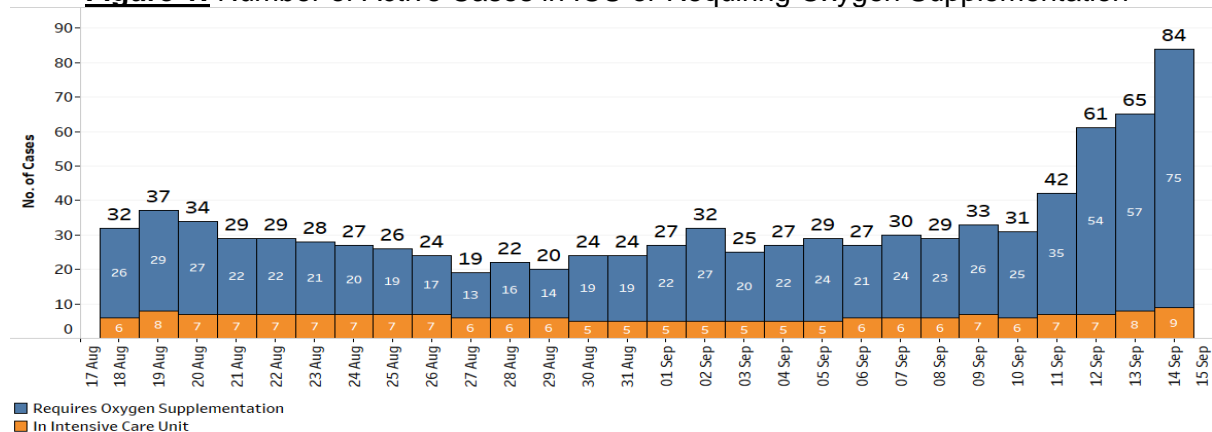
Summary of local situation

- 809 cases are currently warded in hospital. There are currently 75 cases of serious illness requiring oxygen supplementation, and 9 in critical condition in the intensive care unit (ICU).
- Over the last 28 days, the percentage of unvaccinated who became severely ill or died is 6.1%, while that for the fully vaccinated is 1.1%.
- As of 13 September 2021, 81% of our population has completed their full regimen/ received two doses of COVID-19 vaccines, and 84% has received at least one dose.
- As of 14 September 2021, 12pm, the Ministry of Health has detected a total of 837 new cases of COVID-19 infection in Singapore, with 755 in the community, 77 in the migrant worker dormitories and 5 imported cases.

Condition of hospitalised cases

As of 14 September 2021, 12pm, 809 COVID-19 cases are currently warded in hospital. Most are well and under observation. There are currently 75 cases of serious illness requiring oxygen supplementation, and 9 in critical condition in the ICU. Of those who have fallen very ill, 66 are seniors above 60 years.

Figure 1: Number of Active Cases in ICU or Requiring Oxygen Supplementation¹



¹ Includes all cases who are currently hospitalised.

2. Over the last 28 days, the percentage of local cases who were asymptomatic or had mild symptoms is 98.1%. Of the 114 cases who required oxygen supplementation, 56 were not fully vaccinated and 58 were fully vaccinated. Of the 8 who had been in the ICU, 5 were not fully vaccinated and 3 were fully vaccinated. Of the 4 who died, none were fully vaccinated².

Figure 2: Local Cases in the Last 28 Days by Severity of Condition³

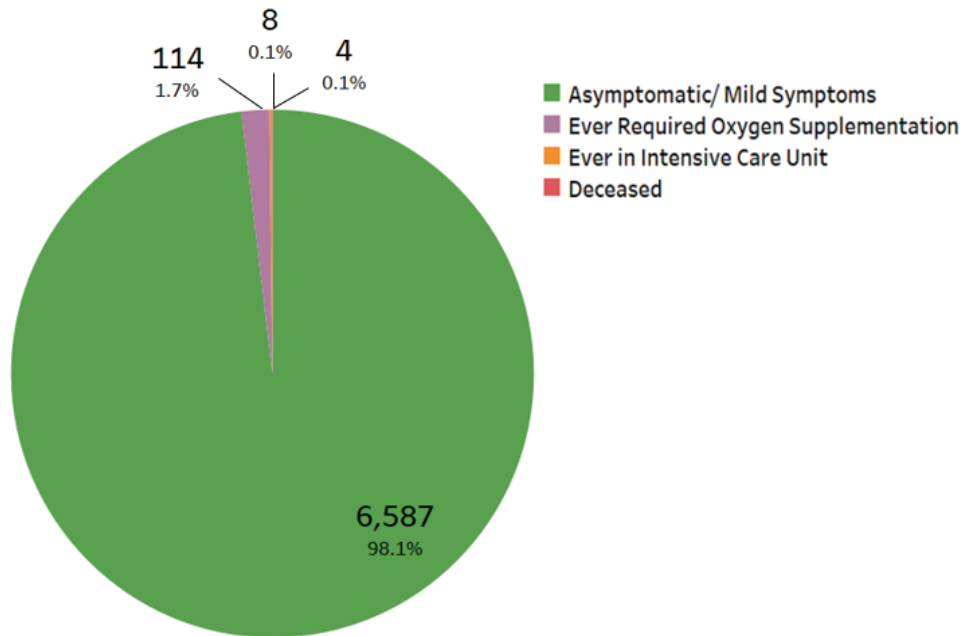
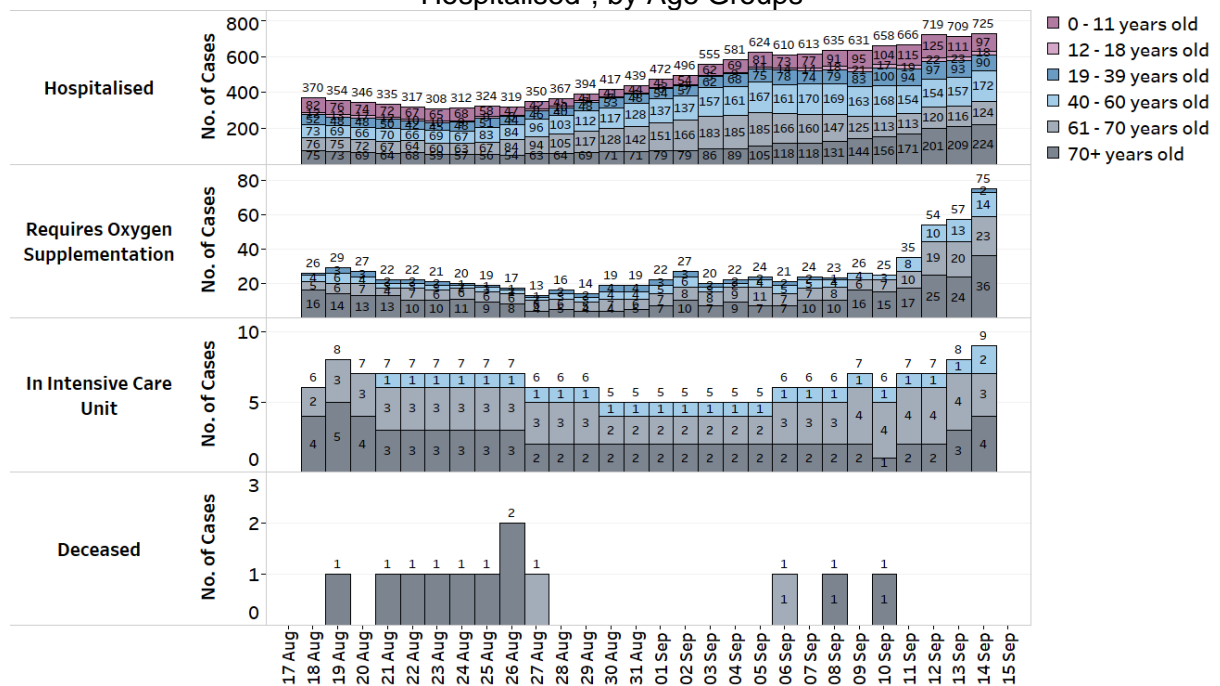


Figure 3: Deaths and Active Cases in ICU, Requiring Oxygen Supplementation or Hospitalised¹, by Age Groups



² Fully vaccinated - more than 14 days after completing vaccination regimen (both doses of the vaccine or one dose for recovered individuals).

³ Includes only new cases reported in the past 28 days.

Update on vaccination progress

3. As of 13 September 2021, 81% of our population has completed their full regimen/ received two doses of COVID-19 vaccines, and 84% has received at least one dose.

4. We have administered a total of 8,874,365 doses of COVID-19 vaccines under the national vaccination programme (Pfizer-BioNTech Comirnaty and Moderna), covering 4,558,863 individuals, with 4,428,658 individuals having completed the full vaccination regimen. In addition, 178,337 doses of other vaccines recognised in the World Health Organization's Emergency Use Listing (WHO EUL) have been administered, covering 86,659 individuals.

Locally transmitted COVID-19 cases

5. As of 14 September 2021, 12pm, the Ministry of Health has detected a total of 837 new cases of COVID-19 infection in Singapore, comprising 755 community cases, 77 dormitory residents cases and 5 imported cases.

a) Active clusters under close monitoring

6. We are closely monitoring the clusters listed below, which have already been ringfenced through tracing, testing and isolation.

Figure 4: Large Clusters with New Cases

Cluster	New Cases	Total ⁴	Remarks
11 Tuas Ave 10 dormitory	20	21	Ongoing intra-dormitory transmission amongst residents, detected through proactive testing. Of the new cases, 19 have been quarantined earlier. All residents will be tested.
All Saints Home (Jurong East)	1	10	Transmission amongst staff and residents. Of the 10 cases, 9 are residents and 1 is a staff. All staff on the affected level have been tested.
Ren Ci @ Bukit Batok Street 52	1	29	Transmission amongst staff and residents. Of the 29 cases, 20 are residents and 9 are staff. All residents and staff of the nursing home are being tested.
Avery Lodge Dormitory	16	82	Ongoing intra-dormitory transmission amongst residents, detected through proactive testing. Residents have been placed on Movement Restriction Order, and are being tested.

⁴ Includes new cases added today.

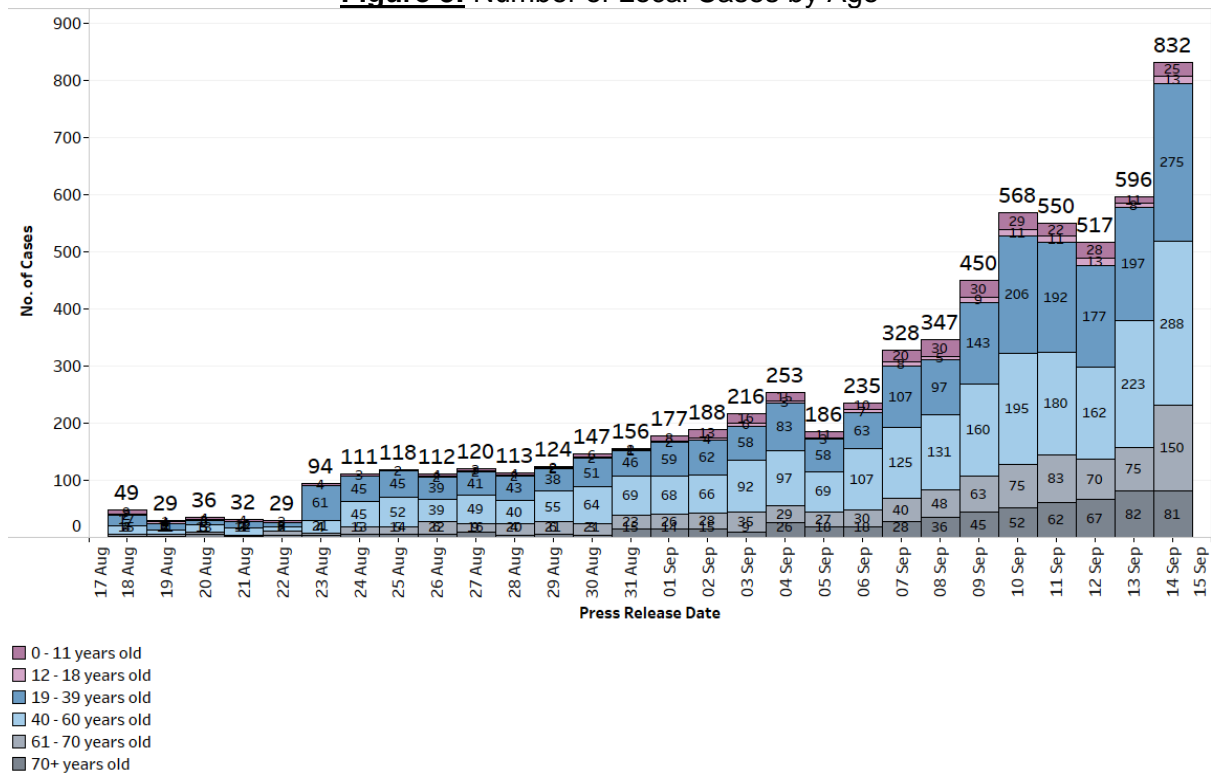
Cluster	New Cases	Total ⁴	Remarks
DHL Supply Chain Advanced Regional Centre (1 Greenwich Drive)	12	58	Workplace transmission with further spread to household contacts of cases. Of the 58 cases, 50 are staff and 8 are household contacts of cases.
Chinatown Complex	15	126	Ongoing workplace transmission, including 89 stallholders and assistants, 5 cases working as cleaners/ Safe Distancing Ambassador, and 32 household contacts of workers. Chinatown Complex has been closed to the public since 12 September, 1500h.
Hu Lee Impex (Chin Bee Avenue)	2	67	Workplace transmission with further spread to household contacts of cases. These include 52 staff (including 30 vegetable packers) and 15 household contacts of cases.
PCF Sparkletots Braddell Heights (335 Serangoon Avenue 3)	1	24	Transmission amongst students in the same class, with further spread to household contact of cases; new case has been quarantined earlier
30 Sunview Way construction site	11	170	Workplace transmission, no evidence of spread beyond worksite; 8 of the new cases have been quarantined earlier
Sembcorp Marine Tuas Boulevard Yard	12	100	Most cases are residents of 38 Kian Teck Drive dormitory
Bugis Junction	1	317	Intra-mall transmission amongst staff and visitors, with further transmission to close contacts of staff and visitors
Toa Payoh Bus Interchange staff	2	227	Workplace transmission amongst bus captains and interchange staff, no evidence of spread to commuters
Tampines Bus Interchange staff	3	85	Workplace transmission amongst bus captains and interchange staff, no evidence of spread to commuters
Boon Lay Bus Interchange staff	4	208	Workplace transmission amongst bus captains and interchange staff, no evidence of spread to commuters

b) Summary of trends for local cases

7. There are 832 new cases of locally transmitted COVID-19 infection in Singapore, with 755 in the community and 77 in the migrant worker dormitories.

Amongst the local cases today are 231 seniors who are above 60 years.

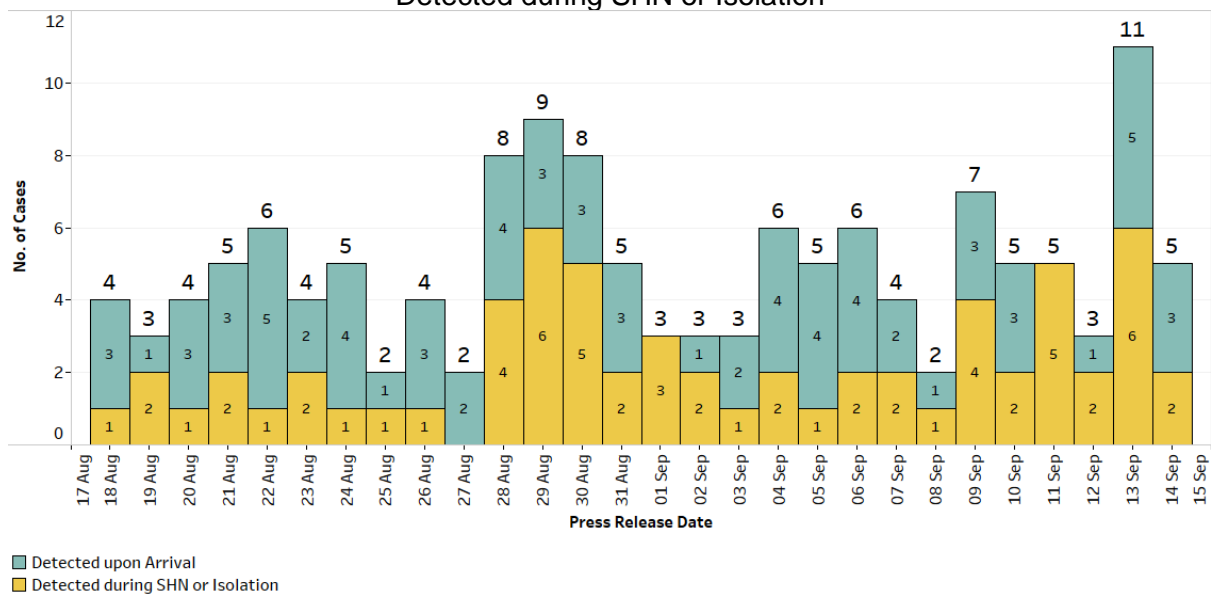
Figure 5: Number of Local Cases by Age



Summary of trends for imported cases

8. There are a total of 5 imported cases, who have already been placed on Stay-Home Notice (SHN) or isolated upon arrival in Singapore. Of these, 3 were detected upon arrival in Singapore, while 2 developed the illness during SHN or isolation.

Figure 6: Number of Imported Cases by Detected Upon Arrival/ Detected during SHN or Isolation



9. Please refer to MOH's daily Situation Report (www.moh.gov.sg/covid-19)

19/situation-report) for details.

MINISTRY OF HEALTH
14 SEPTEMBER 2021
