



FOR IMMEDIATE RELEASE

UPDATE ON LOCAL COVID-19 SITUATION

Summary of local situation

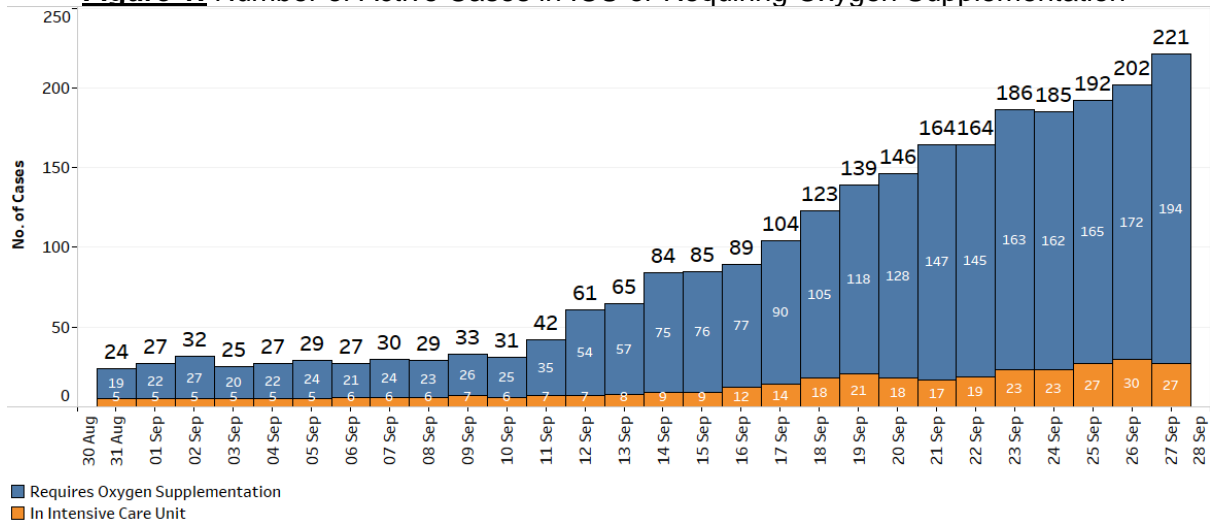
- 1,288 cases are currently warded in hospital. There are currently 194 cases of serious illness requiring oxygen supplementation, and 27 in critical condition in the intensive care unit (ICU).
- Over the last 28 days, of the 21,935 infected individuals, 98.0% had no or mild symptoms, 1.7% required oxygen supplementation, 0.2% required ICU care, and 0.1% has died.
- As of 26 September 2021, 82% of our population has completed their full regimen/ received two doses of COVID-19 vaccines, and 85% has received at least one dose.
- As of 27 September 2021, 12pm, the Ministry of Health has detected a total of 1,647 new cases of COVID-19 infection in Singapore, with 1,280 in the community, 362 in the migrant worker dormitories and 5 imported cases.

Condition of hospitalised cases

As of 27 September 2021, 12pm, 1,288 COVID-19 cases are currently warded in hospital. Most are well and under observation. There are currently 194 cases of serious illness requiring oxygen supplementation, and 27 in critical condition in the ICU. Of those who have fallen very ill, 185 are seniors above 60 years.

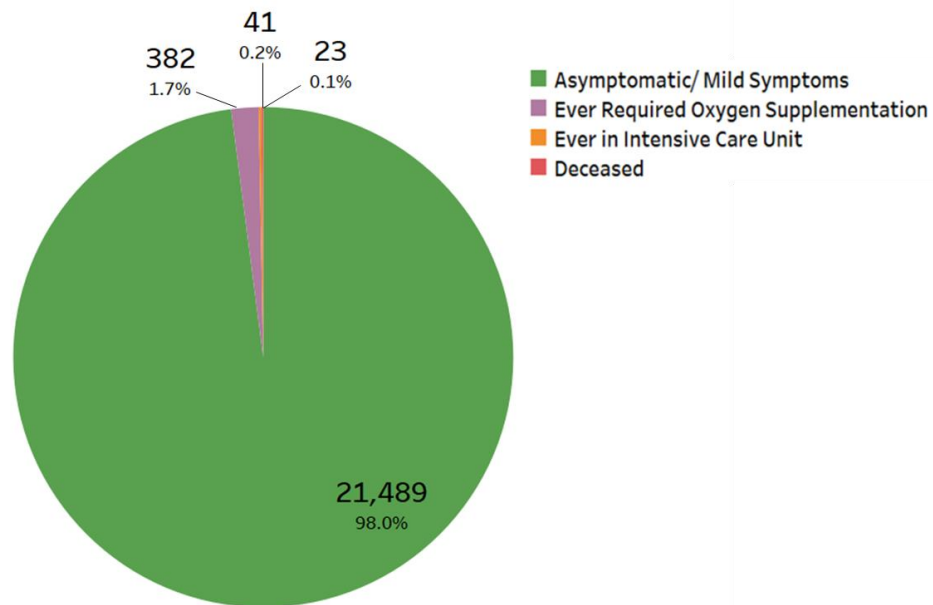
2. 2 more cases have passed away from complications due to COVID-19 infection. Case 74761 was an 80-year-old female Singaporean and Case 88258 was a 74-year-old male Singaporean. Both of them had been vaccinated against COVID-19, but had various underlying medical conditions. In total, 80 have passed away from complications due to COVID-19 infection.

Figure 1: Number of Active Cases in ICU or Requiring Oxygen Supplementation¹



3. Over the last 28 days, the percentage of local cases who were asymptomatic or had mild symptoms is 98.0%. 382 cases required oxygen supplementation and 41 had been in the ICU. Of these, 51.3% were fully vaccinated and 48.7% were unvaccinated/ partially vaccinated. 23 have died, of whom 34.8% were fully vaccinated and 65.2% were unvaccinated/ partially vaccinated.

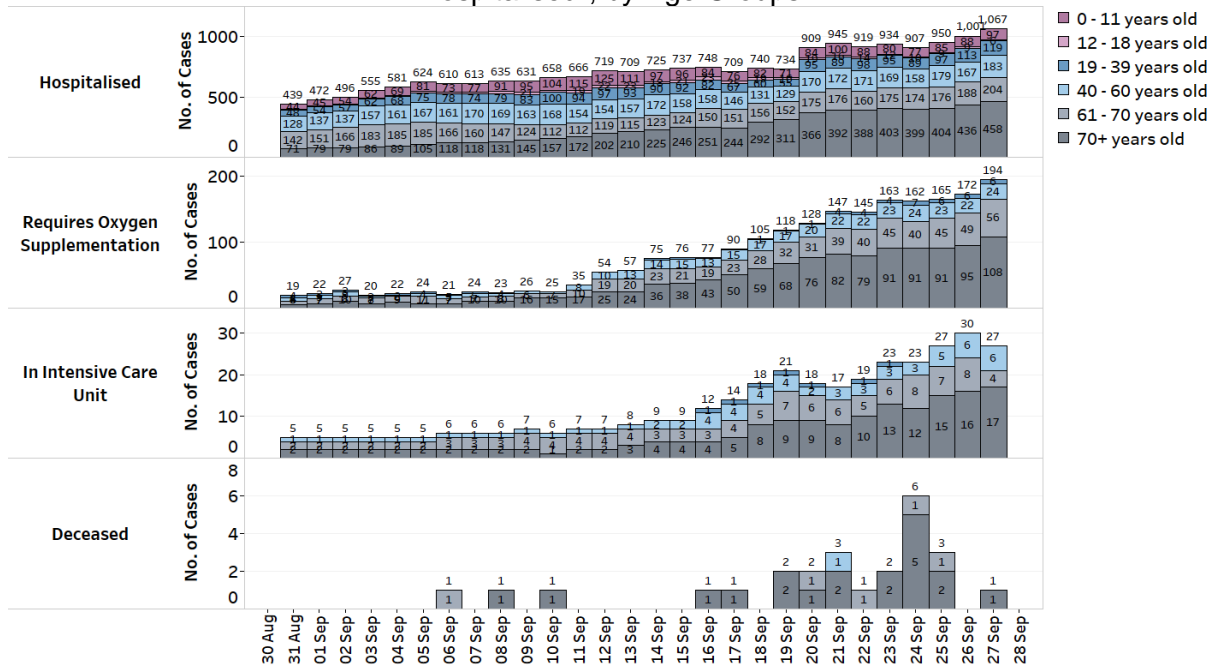
Figure 2: Local Cases in the Last 28 Days by Severity of Condition²



¹ Includes all cases who are currently hospitalised.

² Includes only new cases reported in the past 28 days.

Figure 3: Deaths and Active Cases in ICU, Requiring Oxygen Supplementation or Hospitalised¹, by Age Groups



Update on vaccination progress

4. As of 26 September 2021, 82% of our population has completed their full regimen/ received two doses of COVID-19 vaccines, and 85% has received at least one dose.

5. We have administered a total of 9,066,237 doses of COVID-19 vaccines under the national vaccination programme (Pfizer-BioNTech Comirnaty and Moderna), covering 4,590,002 individuals, with 4,469,610 individuals having completed the full vaccination regimen. In addition, 190,738 doses of other vaccines recognised in the World Health Organization’s Emergency Use Listing (WHO EUL) have been administered, covering 87,701 individuals.

Locally transmitted COVID-19 cases

6. As of 27 September 2021, 12pm, the Ministry of Health has detected a total of 1,647 new cases of COVID-19 infection in Singapore, comprising 1,280 community cases, 362 dormitory residents cases and 5 imported cases.

a) Active clusters under close monitoring

7. We are closely monitoring the clusters listed below, which have already been ringfenced through tracing, testing and isolation.

Figure 4: Large Clusters with New Cases

Cluster	New Cases	Total ³	Remarks
Pasir Panjang Wholesale Centre	1	82	Transmission amongst workers and trade visitors. Of the 82 cases, 76 are workers at the market, 3 are trade visitors and 3 are household members of cases. New case has already been quarantined.
LearnJoy Education Centre	1	18	Transmission amongst staff and students. Of the 18 cases, 2 are a staff, 15 are students and 1 is a household member of a case. New case has already been quarantined.
My Little Campus (Yishun)	3	47	Transmission amongst staff and students. Of the 47 cases, 3 are staff, 27 are students and 17 are household members of cases. New cases have already been quarantined.
SUN-DAC (Choa Chu Kang)	1	25	Transmission amongst clients and staff. Of the 25 cases, 12 are clients, 3 are staff and 10 are household members of cases. New case has already been quarantined.
Ren Ci @ Bukit Batok Street 52	1	39	Transmission amongst staff and residents. Of the 39 cases, 27 are residents, 10 are staff and 2 are household contacts of cases.
Tampines Dormitory	7	61	Intra-dormitory transmission amongst residents with no evidence of spread beyond dormitory. New cases have already been quarantined.
Blue Stars Dormitory	18	381	Intra-dormitory transmission amongst residents with no evidence of spread beyond dormitory. New cases have already been quarantined.
Woodlands Dormitory	12	176	Intra-dormitory transmission amongst residents with no evidence of spread beyond dormitory. New cases have already been quarantined.
Bukit Batok Road/ Plantation Crescent dormitory	5	35	Intra-dormitory transmission amongst residents with no evidence of spread beyond dormitory. New cases have already been quarantined.

b) Summary of trends for local cases

8. There are 1,642 new cases of locally transmitted COVID-19 infection in Singapore, with 1,280 in the community and 362 in the migrant worker dormitories.

³ Includes new cases added today.

Amongst the local cases today are 335 seniors who are above 60 years.

Figure 5: Number of Community Cases by Age

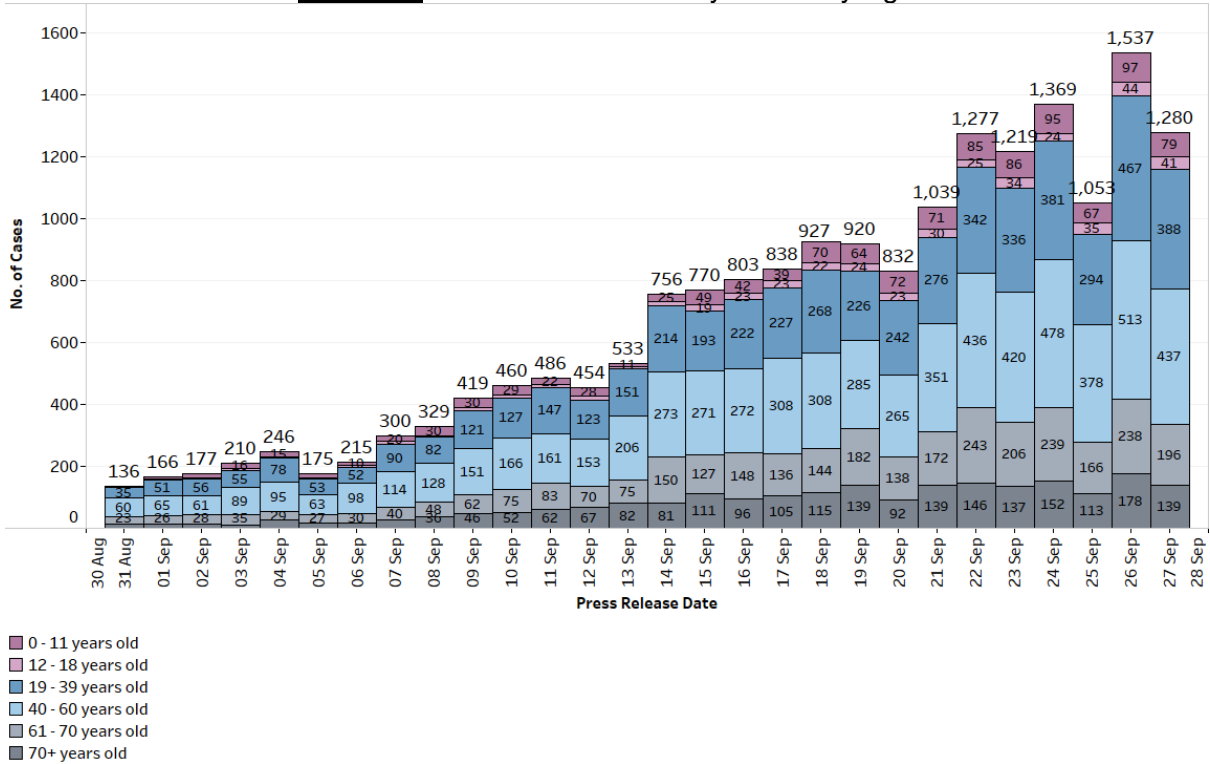
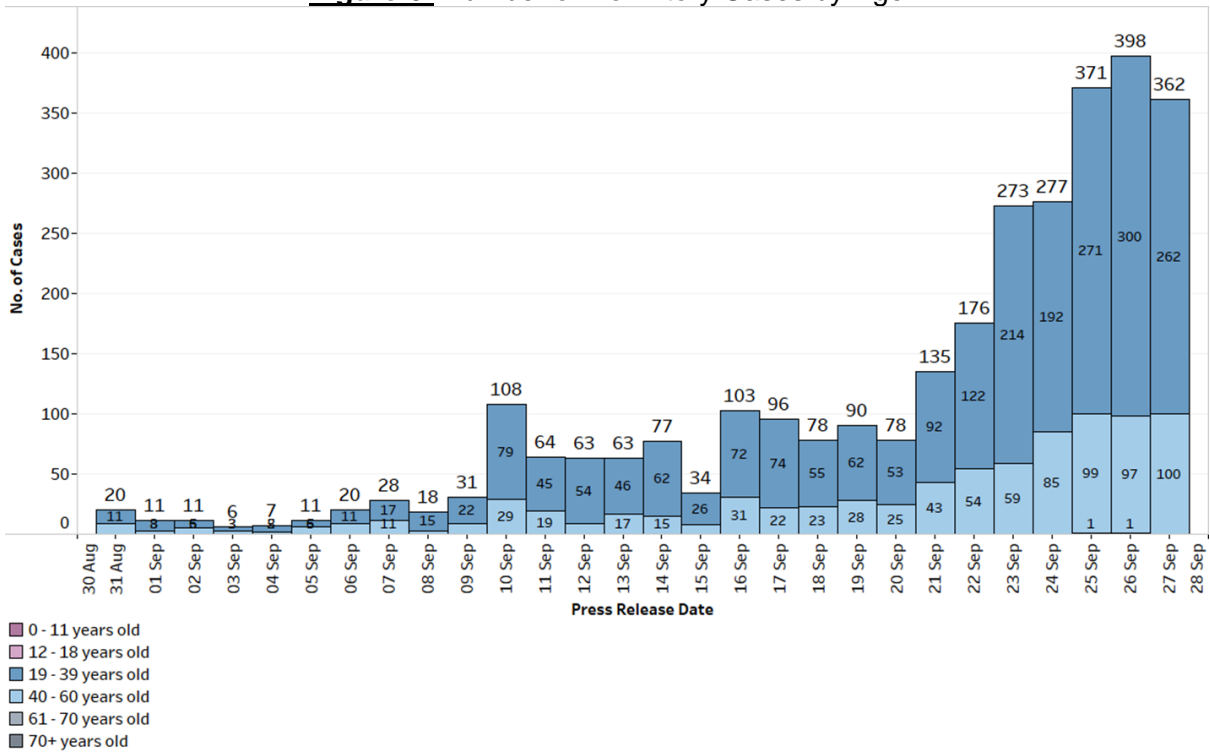


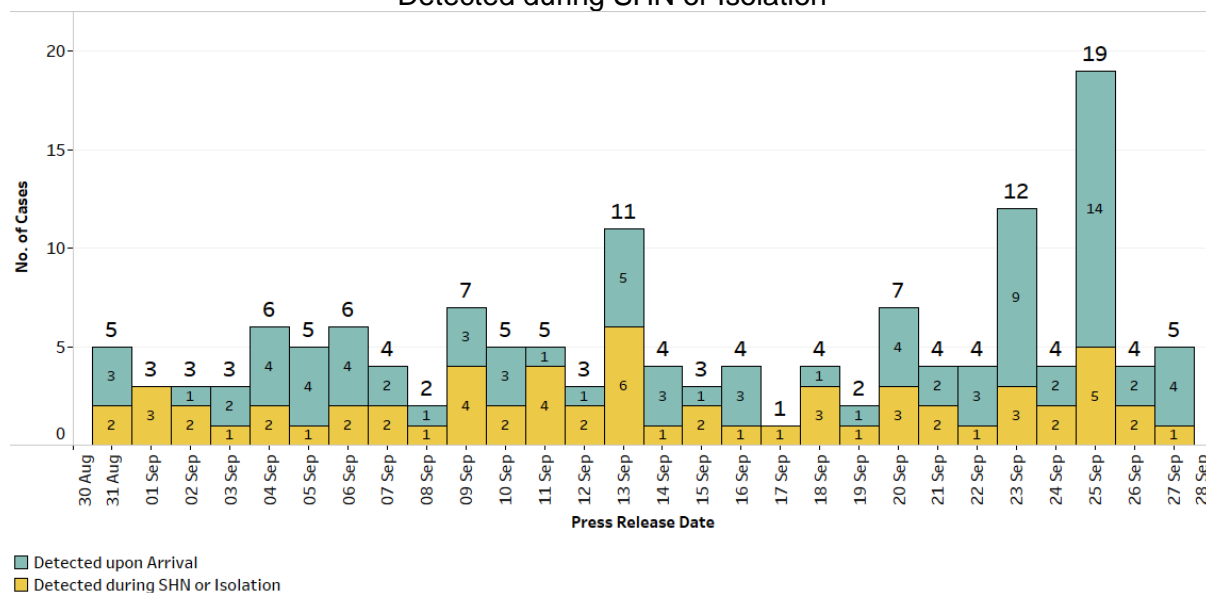
Figure 6: Number of Dormitory Cases by Age



Summary of trends for imported cases

9. There are a total of 5 imported cases, who have already been placed on Stay-Home Notice (SHN) or isolated upon arrival in Singapore. Of these, 4 were detected upon arrival in Singapore, while 1 developed the illness during SHN or isolation.

Figure 7: Number of Imported Cases by Detected Upon Arrival/
Detected during SHN or Isolation



10. Please refer to MOH’s daily Situation Report (www.moh.gov.sg/covid-19/situation-report) for details.

MINISTRY OF HEALTH
27 SEPTEMBER 2021