



FOR IMMEDIATE RELEASE

UPDATE ON LOCAL COVID-19 SITUATION

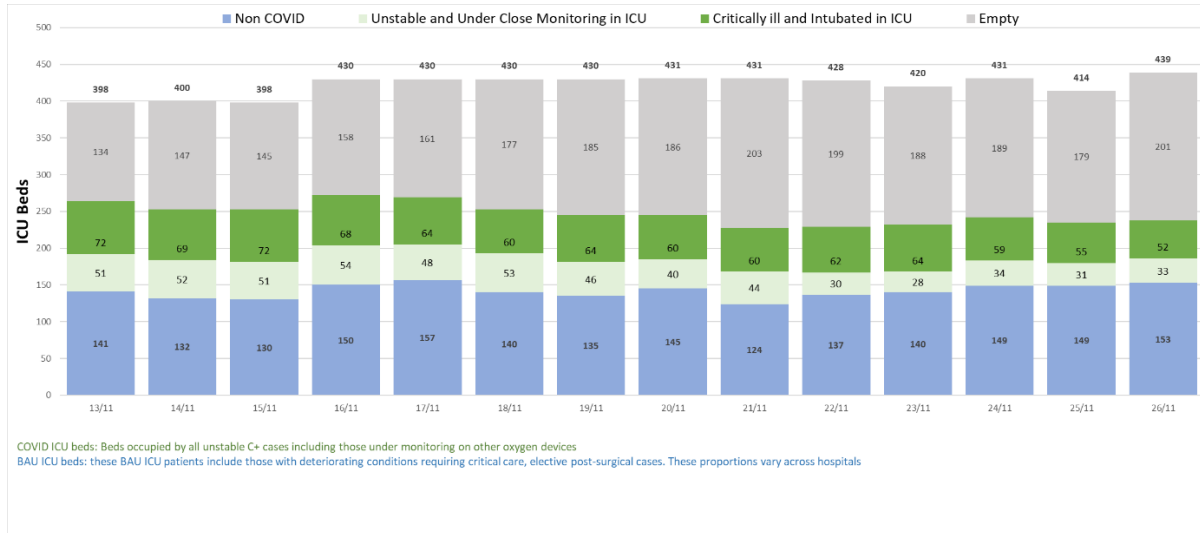
Summary of local situation

- 1,233 cases remain warded in hospital. 214 cases require oxygen supplementation in the general ward, 33 are unstable and under close monitoring in the intensive care unit (ICU), and 52 are critically ill and intubated in the ICU. The current overall ICU utilisation rate is 54.2%.
- Over the last 28 days, of the 67,589 infected individuals, 98.7% had no or mild symptoms, 0.8% required oxygen supplementation in the general ward, 0.2% were in the ICU, and 0.2% has died.
- As of 25 November 2021, 94% of our eligible population has completed their full regimen/ received two doses of COVID-19 vaccines. Among the total population, 85% has completed their full regimen/ received two doses of COVID-19 vaccines, 86% has received at least one dose, and 24% has received their booster shots.
- Over the past day, 2,233 cases were discharged, of whom 301 are seniors aged 60 years and above. 1,090 new cases of COVID-19 infection were detected, with 1,064 in the community, 22 in the migrant worker dormitories and 4 imported cases. The weekly infection growth rate is 0.74.

Situation at Hospitals

1. As of 26 November 2021, 214 cases require oxygen supplementation in the general ward, 33 are unstable and under close monitoring in the ICU to prevent further deterioration, and 52 are critically ill and intubated in the ICU. The current overall ICU utilisation rate is 54.2%.

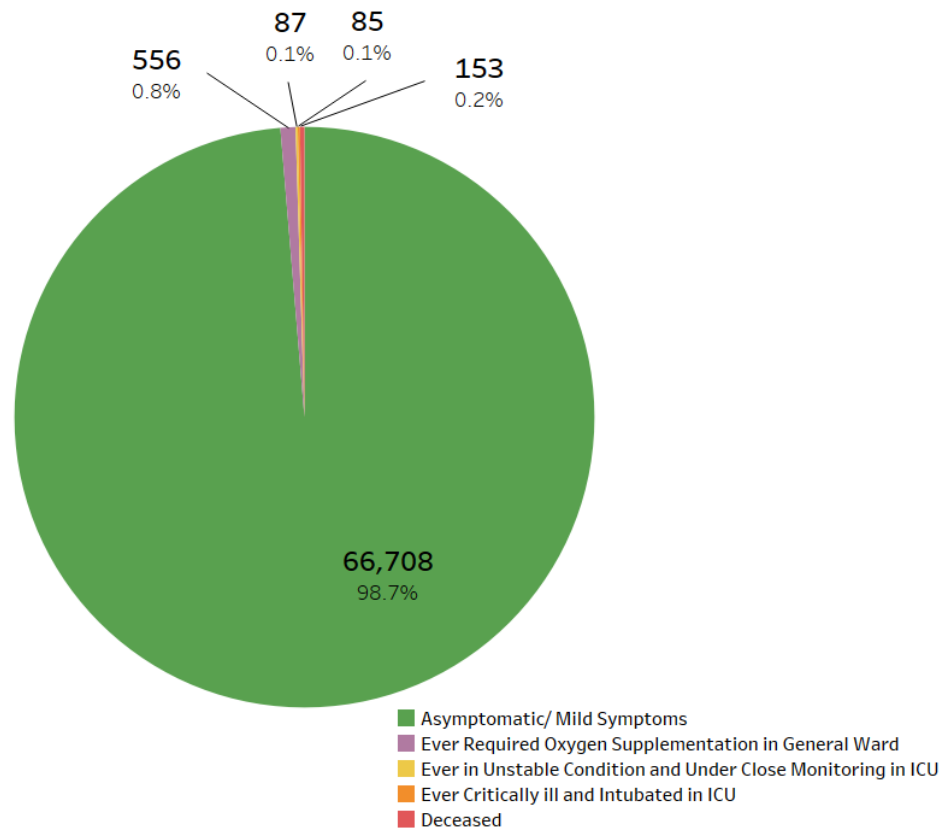
Figure 1: Daily Adult ICU Bed Utilisation



Status of Patients

2. Over the last 28 days, 98.7% of local infected cases were asymptomatic or had mild symptoms, 0.8% required oxygen supplementation in the general ward, 0.1% were unstable and under close monitoring in the ICU to prevent further deterioration, and 0.1% had been critically ill and intubated in the ICU.

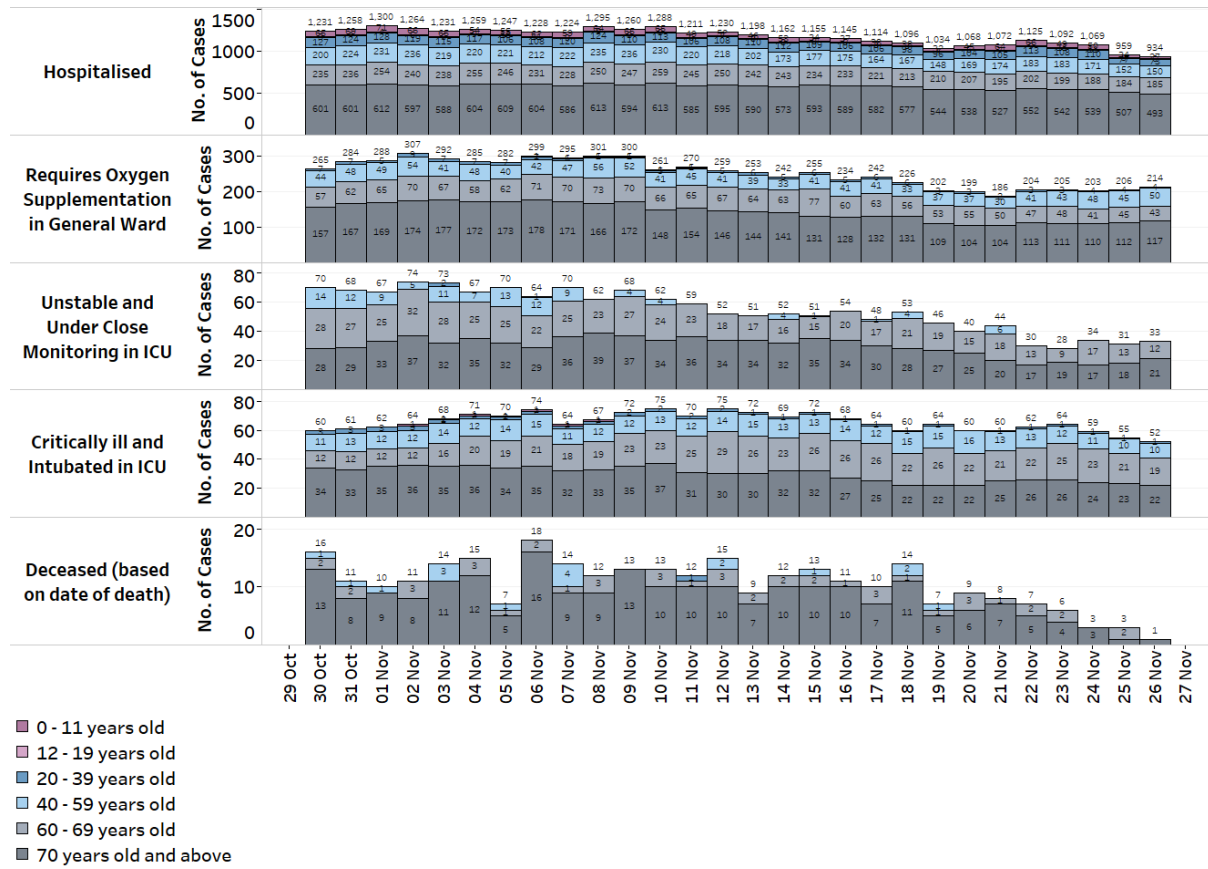
Figure 2: Local Cases in the Last 28 Days by Severity of Condition¹



¹ Includes only new cases reported in the past 28 days. Based on cases' worst-ever condition; deceased cases previously in ICU are counted under 'Deceased' and not under 'Ever Critically ill and Intubated in ICU'.

3. Seniors 60 years old and above, especially if unvaccinated, continue to be more adversely affected by COVID-19:

Figure 3: Patients Needing Oxygen Supplementation, ICU Care or Died², by Age Groups



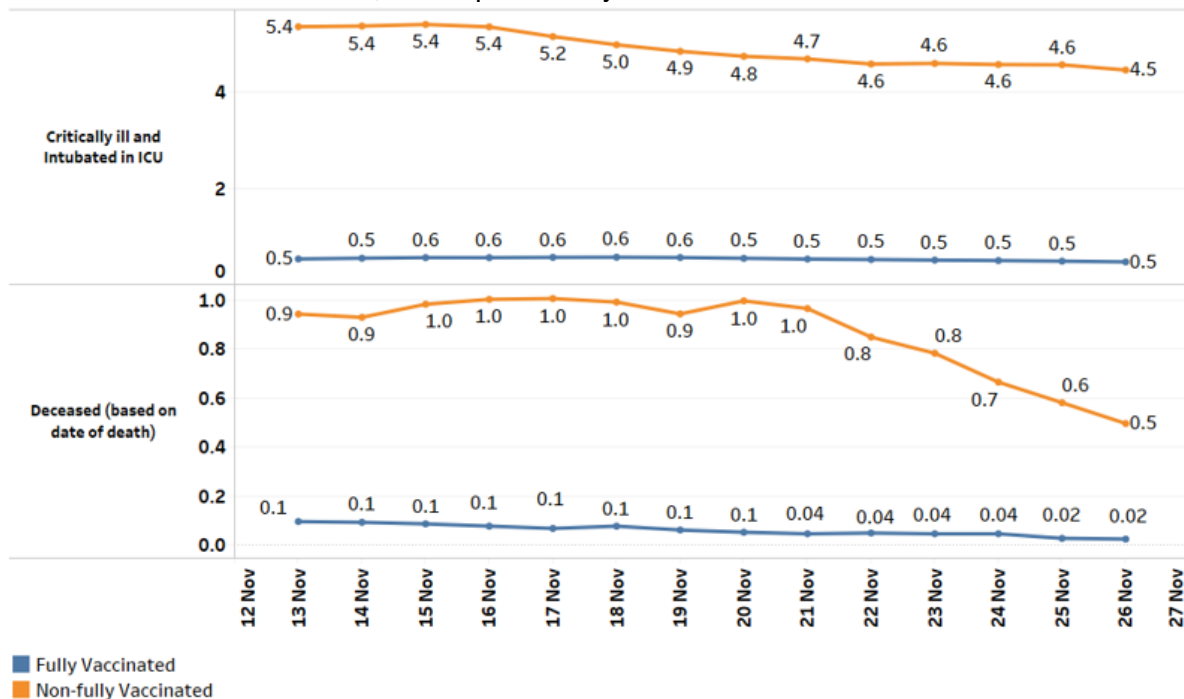
² May differ from the deaths reported for the day as the latter includes those who have passed on earlier, but whose cause of death was investigated and confirmed only later, e.g. Coroner's cases.

Vaccination

4. As of 25 November 2021, 94% of our eligible population (aged 12 years and above) has completed their full regimen/ received two doses of COVID-19 vaccines. Among the total population, 85% has completed their full regimen/ received two doses of COVID-19 vaccines, 86% has received at least one dose, and 24% has received their booster shots.

5. Over the past 7 days, the number of fully vaccinated and non-fully vaccinated cases who are critically ill in the ICU are at 0.5 and 4.5 per 100,000 population respectively. Over the same period, the number of fully vaccinated and non-fully vaccinated cases who died are 0.02 and 0.5 per 100,000 population respectively. Among seniors aged 60 and above, the number of fully vaccinated and non-fully vaccinated cases who are critically ill in the ICU are 1.6 and 41.8 respectively. The number of fully vaccinated and non-fully vaccinated seniors who died are 0.1 and 5.5 respectively.

Figure 4: 7-Day Moving Average of Number of Deaths and Active Cases in ICU, per 100,000 Population by Vaccination Status³



³ Non-fully vaccinated comprises persons who are partially vaccinated and completely unvaccinated.

Inflow and Outflow of Cases

6. Over the past day, 2,233 cases were discharged, of whom 301 are seniors aged 60 years and above.

7. As of 26 November 2021, 12pm, the Ministry of Health has detected a total of 1,090 new cases of COVID-19 infection, comprising 1,064 community cases, 22 dormitory resident cases and 4 imported cases. Amongst the community cases today are 185 seniors who are aged 60 years and above. The ratio of community cases for the past week over the week before is 0.74.

8. 3 more cases, aged between 69 and 83 years, have passed away from complications due to COVID-19 infection. All of them had various underlying medical conditions.

Figure 5: Number of Community Cases by Age

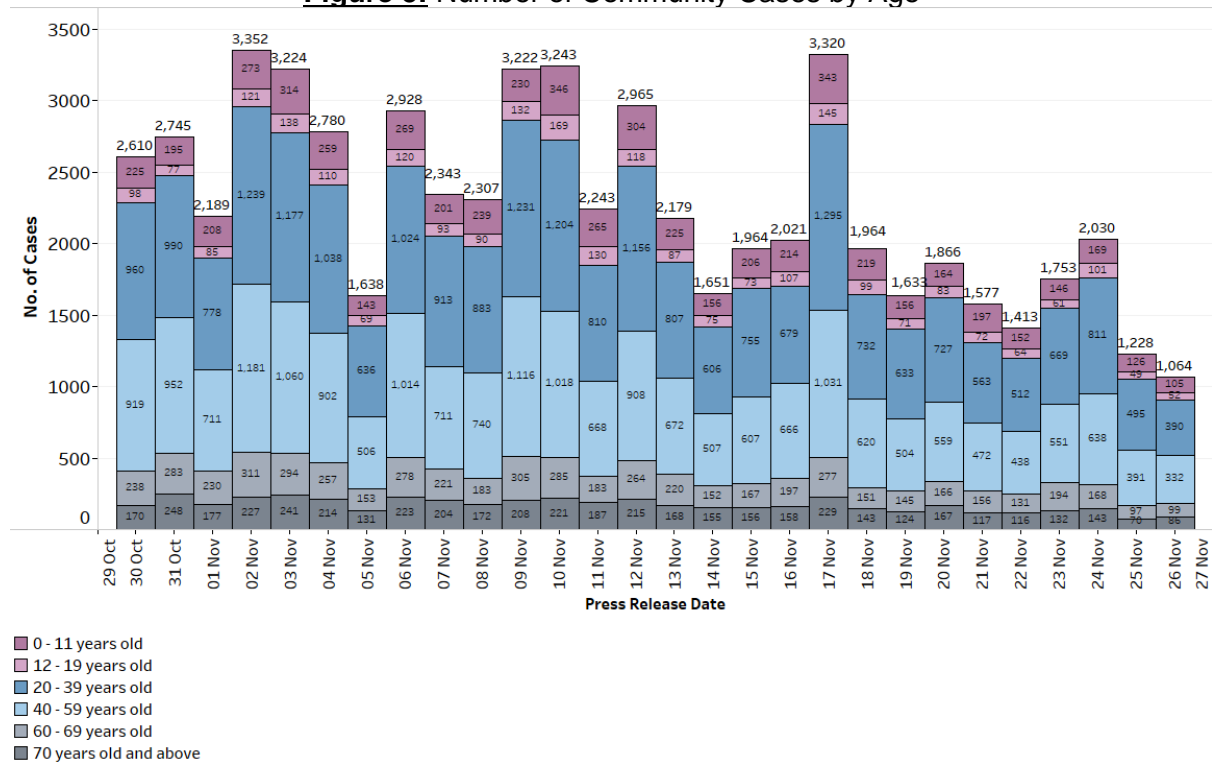
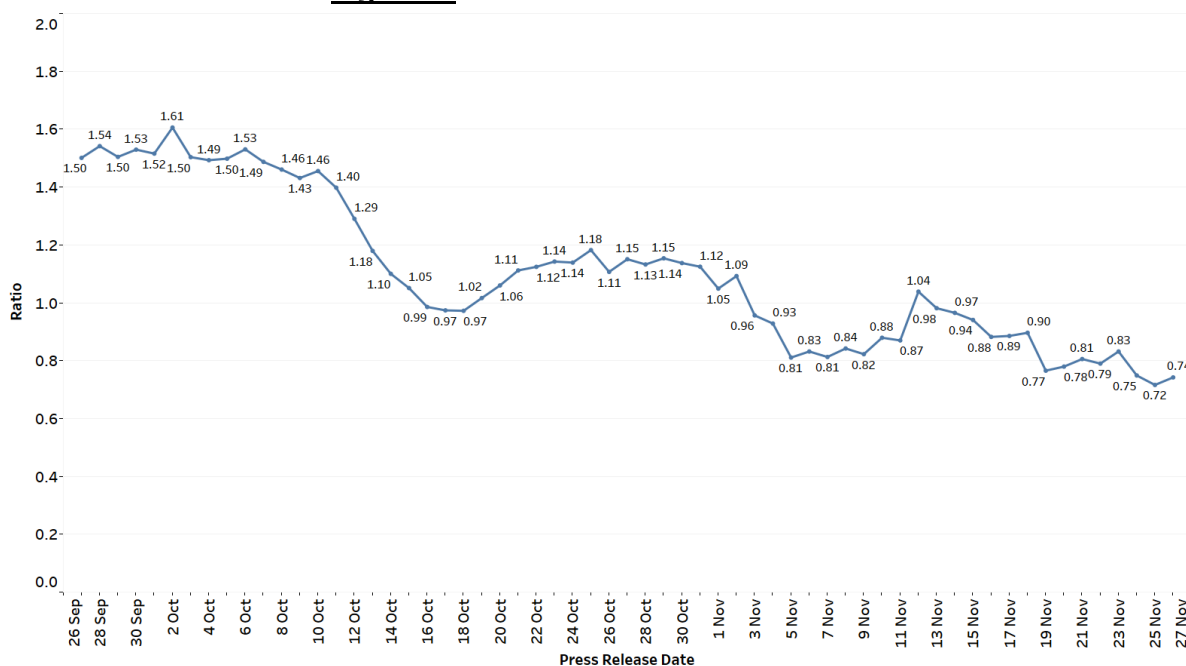


Figure 6: Week-on-week Infection Ratio⁴



9. We are closely monitoring the clusters listed below, which have already been ringfenced through tracing, testing and isolation.

Figure 7: Large Clusters with New Cases

Cluster	New Cases	Total ⁵	Remarks
Society for the Aged Sick	1	28	Transmission amongst staff and residents. Of the 28 cases, 3 are staff and 25 are residents.
Pacific Healthcare Nursing Home (6 Lengkok Bahru)	1	34	Transmission amongst staff and residents. Of the 34 cases, 1 is a staff and 33 are residents.
ECON Healthcare Nursing Home (Chai Chee)	1	37	Transmission amongst staff and residents. Of the 37 cases, 1 is a staff and 36 are residents.
Jenaris Home @ Pelangi Village	8	104	Transmission amongst staff and residents. Of the 104 cases, 2 are staff and 102 are residents.
Sunlove Senior Care Centre @ 70 Buangkok View	1	25	Transmission amongst staff and clients. Of the 25 cases, 2 are staff, 17 are clients, and 6 are household members.

10. Please refer to MOH's daily Situation Report (www.moh.gov.sg/covid-19/situation-report) for details.

⁴ Ratio of community cases in the past week over the week before.

⁵ Includes new cases added today.

MINISTRY OF HEALTH
26 NOVEMBER 2021
