



FOR IMMEDIATE RELEASE

UPDATE ON LOCAL COVID-19 SITUATION

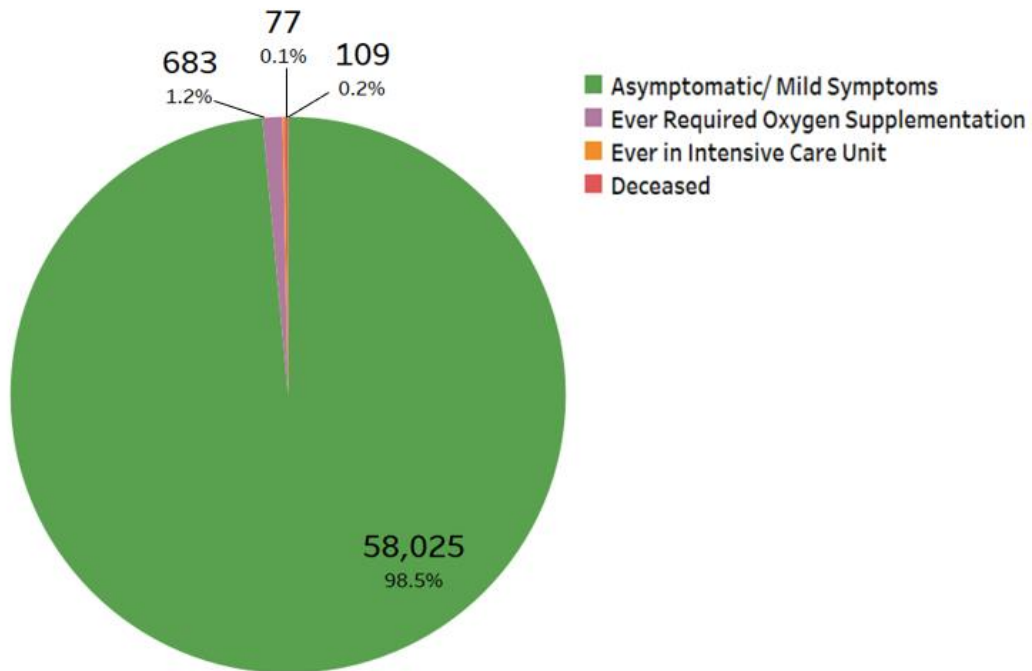
Summary of local situation

- 1,619 cases are currently warded in hospital. 291 cases require oxygen supplementation and 42 are in the intensive care unit (ICU).
- Over the last 28 days, of the 58,894 infected individuals, 98.5% had no or mild symptoms, 1.2% required oxygen supplementation, 0.1% required ICU care, and 0.2% has died.
- As of 11 October 2021, 83% of our population has completed their full regimen/ received two doses of COVID-19 vaccines, and 85% has received at least one dose.
- As of 12 October 2021, 12pm, the Ministry of Health has detected a total of 2,976 new cases of COVID-19 infection in Singapore, with 2,721 in the community, 251 in the migrant worker dormitories and 4 imported cases.

Situation update

1. Over the last 28 days, 98.5% of local infected cases were asymptomatic or had mild symptoms, 1.2% required oxygen supplementation, and 0.1% had been in the ICU. Amongst those who required oxygen supplementation and ICU, 49.9% were fully vaccinated and 50.1% were unvaccinated/ partially vaccinated.

Figure 1: Local Cases in the Last 28 Days by Severity of Condition¹

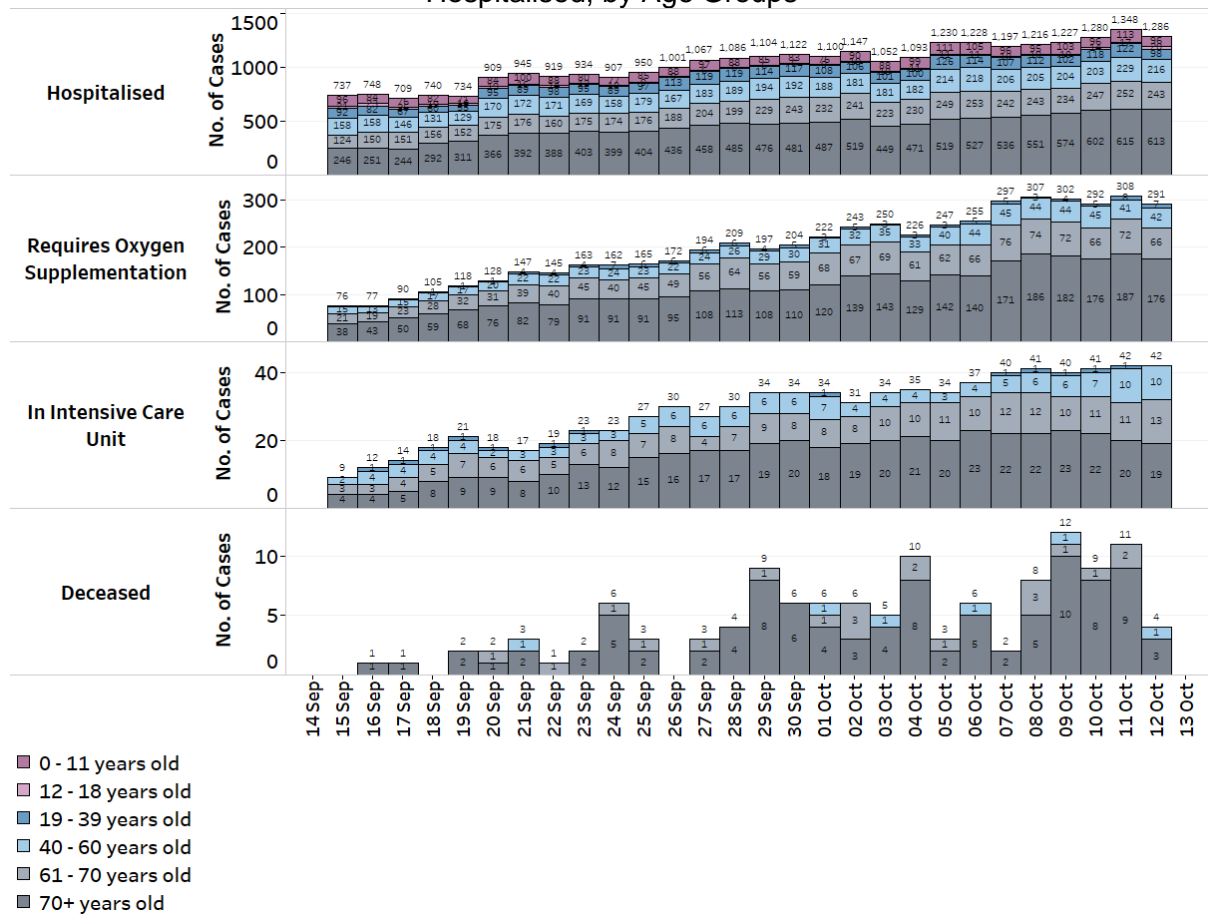


¹ Includes only new cases reported in the past 28 days. Based on cases' worst-ever condition; deceased cases previously in ICU are counted under 'Deceased' and not under 'Ever in Intensive Care Unit'.

2. 11 more cases have passed away from complications due to COVID-19 infection.² Of these, 5 were male Singaporeans and 6 were female Singaporeans, aged between 66 and 98 years. Amongst them, 3 had been unvaccinated against COVID-19, 6 had been partially vaccinated and 2 had been vaccinated. All of them had various underlying medical conditions.

3. Amongst those who have passed away over the last 28 days, 26.6% were fully vaccinated and 73.4% were unvaccinated/ partially vaccinated.

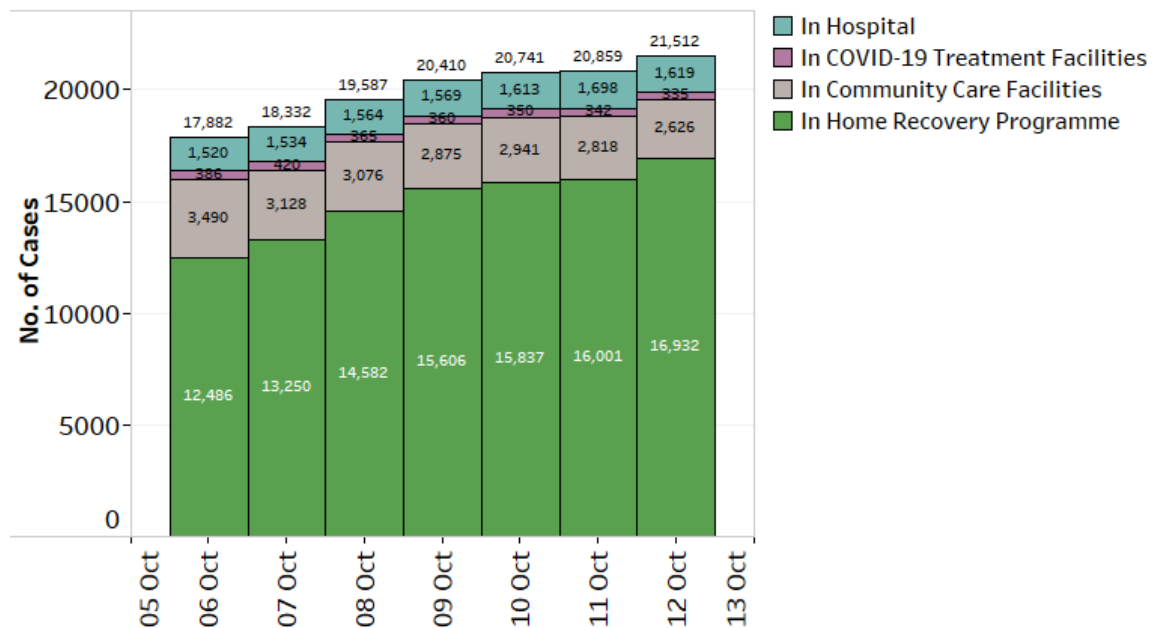
Figure 2: Deaths and Active Cases in ICU, Requiring Oxygen Supplementation or Hospitalised, by Age Groups



² Cases 75832, 85526, 86772, 101610, 102320, 105172, 107109, 113768, 118238, 129333 and 132224.

4. As of 12 October 2021, 12pm, amongst all COVID-19 community cases who have been onboarded or admitted, 16,932 (78.7%) cases are undergoing Home Recovery. 2,626 (12.2%) cases are in Community Care Facilities, 335 (1.6%) cases are in COVID-19 Treatment Facilities, and 1,619 (7.5%) COVID-19 patients are currently warded in hospital, mostly for observation. 291 require oxygen supplementation, and 42 are in the ICU.

Figure 3: Breakdown of Number of Active Cases in Hospital, COVID-19 Treatment Facilities, Community Care Facilities, and Home Recovery Programme in the Last 7 Days



Vaccination progress

5. As of 11 October 2021, 83% of our population has completed their full regimen/ received two doses of COVID-19 vaccines, and 85% has received at least one dose.

6. We have administered a total of 9,490,422 doses of COVID-19 vaccines under the national vaccination programme (Pfizer-BioNTech Comirnaty and Moderna). In total, 4,606,968 individuals have received at least one dose of vaccine under the national vaccination programme, and 4,546,215 individuals having completed the full vaccination regimen. In addition, 215,702 doses of other vaccines recognised in the World Health Organization’s Emergency Use Listing (WHO EUL) have been administered, covering 113,562 individuals.

7. To date, we have invited about 760,000 eligible individuals to receive their booster doses. 465,204 individuals have received their booster shots and another 127,000 have booked their appointments.

Active clusters under close monitoring

8. We are closely monitoring the cluster listed below, which has already been ringfenced through tracing, testing and isolation.

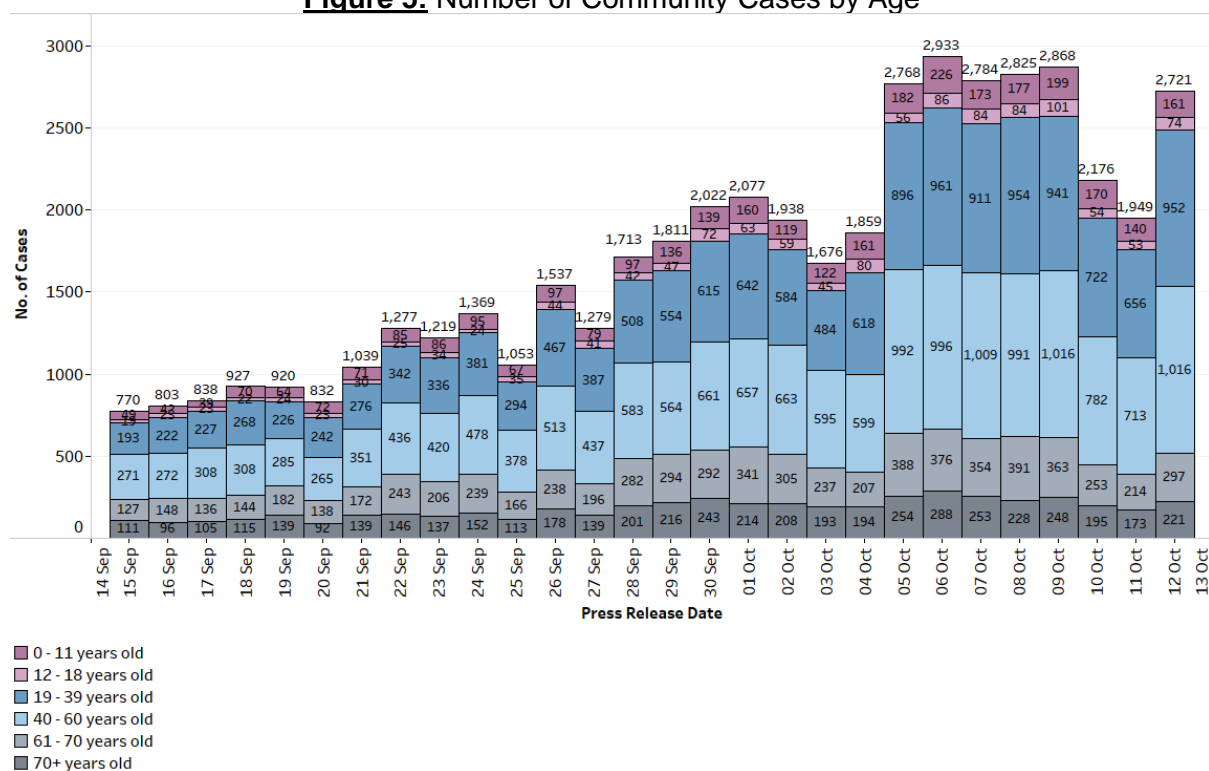
Figure 4: Large Clusters with New Cases

Cluster	New Cases	Total ³	Remarks
United Medicare Centre (Toa Payoh)	6	99	Transmission amongst staff and residents. Of the 99 cases, 13 are staff, 85 are residents, and 1 is a household member of a case.

Summary of trends for local cases

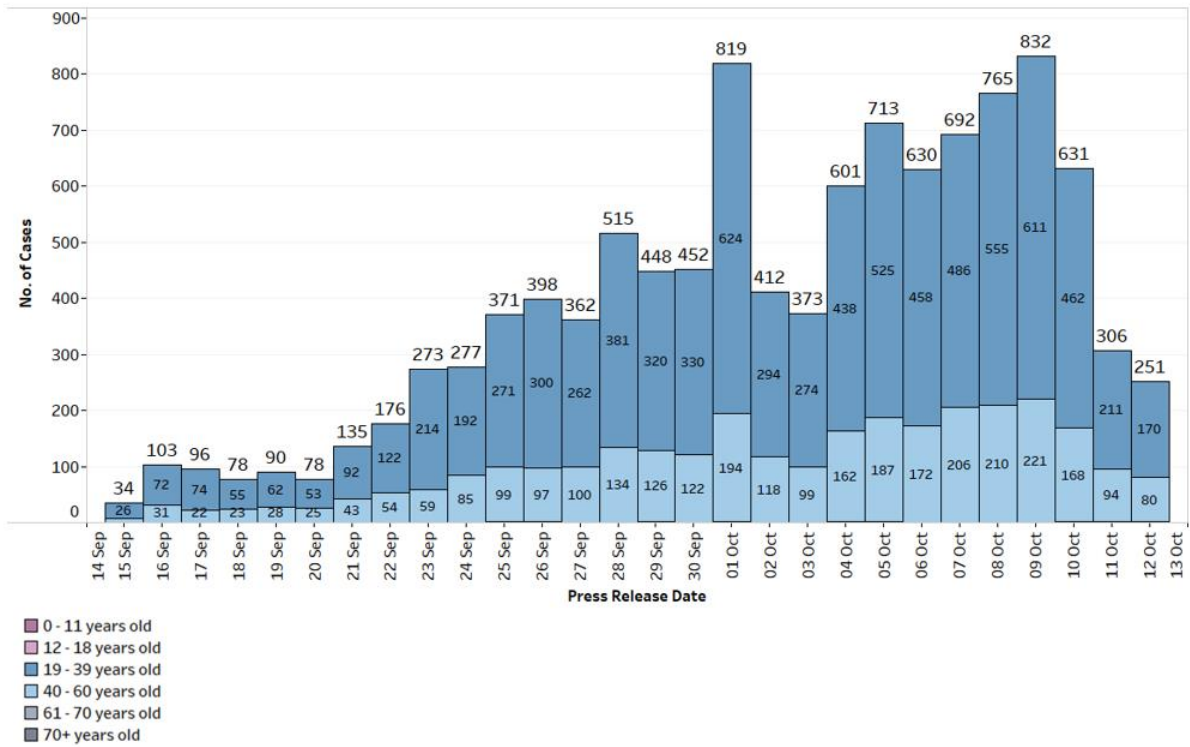
9. As of 12 October 2021, 12pm, the Ministry of Health has detected a total of 2,976 new cases of COVID-19 infection in Singapore, comprising 2,721 community cases, 251 dormitory residents cases and 4 imported cases. Amongst the local cases today are 519 seniors who are above 60 years.

Figure 5: Number of Community Cases by Age



³ Includes new cases added today.

Figure 6: Number of Dormitory Cases by Age



10. Please refer to MOH’s daily Situation Report (www.moh.gov.sg/covid-19/situation-report) for details.

MINISTRY OF HEALTH
12 OCTOBER 2021