



FOR IMMEDIATE RELEASE

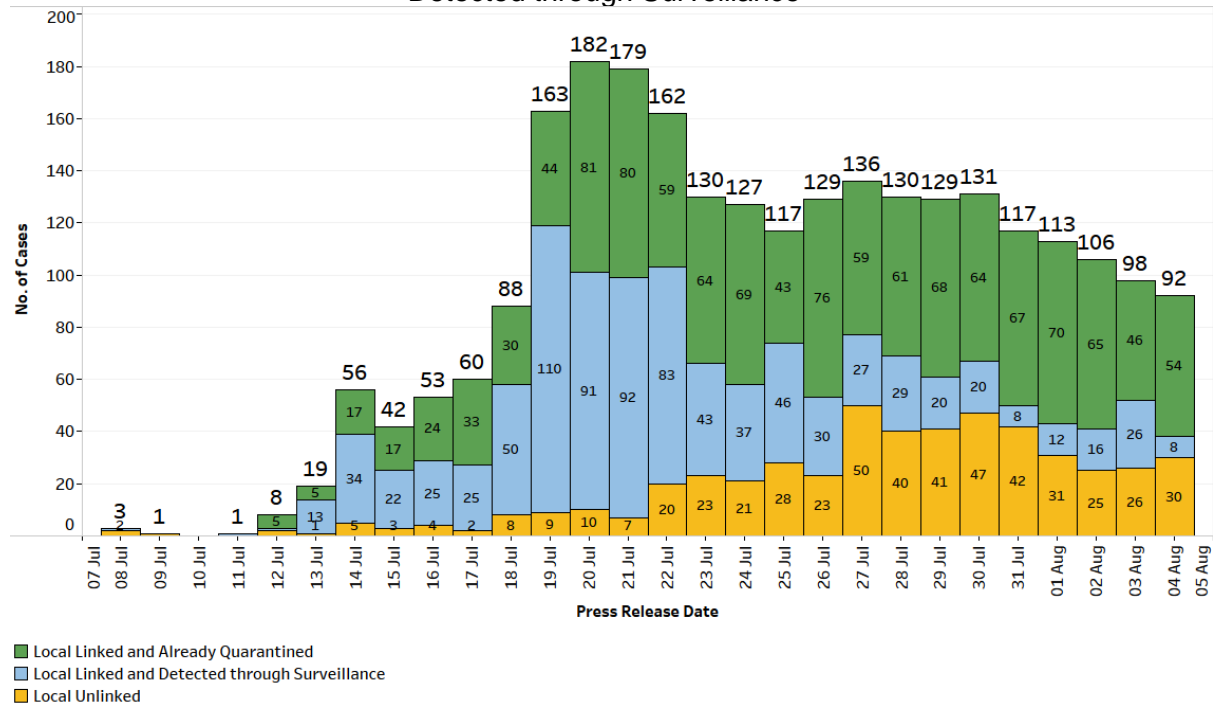
UPDATE ON LOCAL COVID-19 SITUATION

As of 4 August 2021, 12pm, the Ministry of Health (MOH) has confirmed and verified that there are 92 cases of locally transmitted COVID-19 infection. 54 are linked to previous cases, and have already been placed on quarantine. 8 are linked to previous cases and were detected through surveillance. 30 are currently unlinked. Amongst the cases is 1 senior above 70 years who is unvaccinated, and is at risk of serious illness.

2. There are 3 imported cases, who have already been placed on Stay-Home Notice (SHN) or isolated upon arrival in Singapore. 1 was detected upon arrival in Singapore, while 2 developed the illness during SHN or isolation.

3. In total, there are 95 new cases of COVID-19 infection in Singapore today.

**Figure 1:** Number of Local Unlinked Cases and Linked Cases by Already Quarantined/ Detected through Surveillance <sup>1</sup>

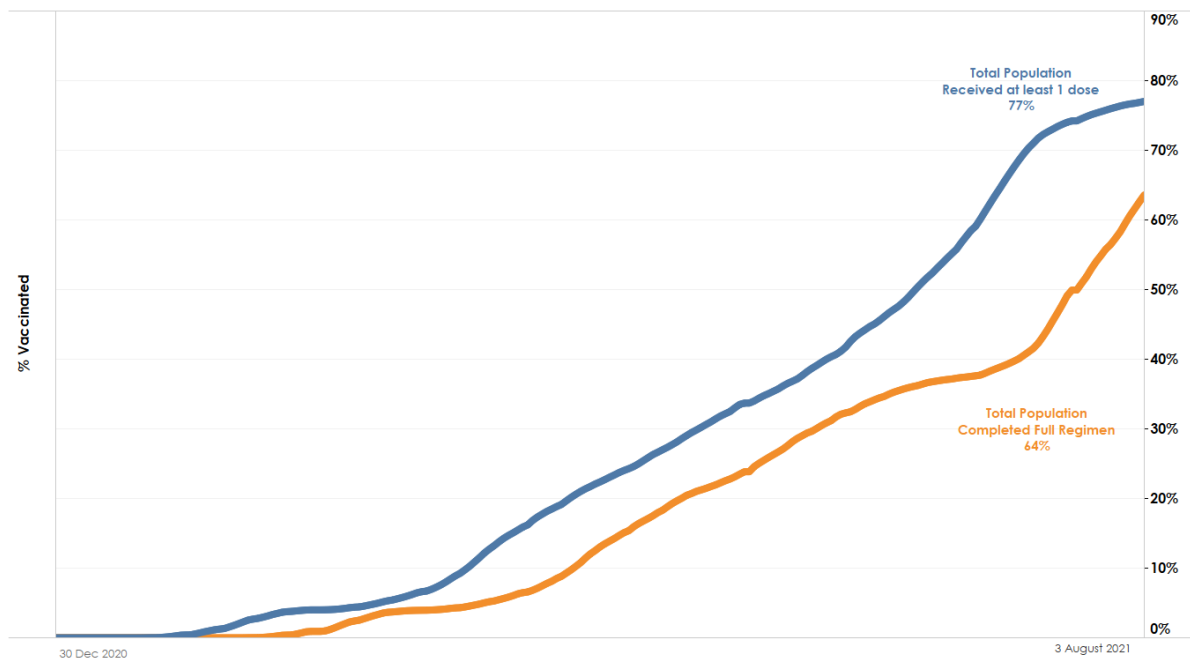


<sup>1</sup> Incorporates re-classifications of earlier reported cases.

## Progress of national vaccination programme

4. As of 3 August 2021, 64% of our population has completed their full regimen/ received two doses of COVID-19 vaccines under the national vaccination programme, and 77% has received at least one dose. In total, we have administered a total of 7,767,442 doses of COVID-19 vaccines under the national vaccination programme, covering 4,329,956 individuals, with 3,561,452 individuals having completed the full vaccination regimen. In addition, 113,767 doses of Sinovac vaccines have been administered as of 3 August 2021, covering 76,571 individuals.

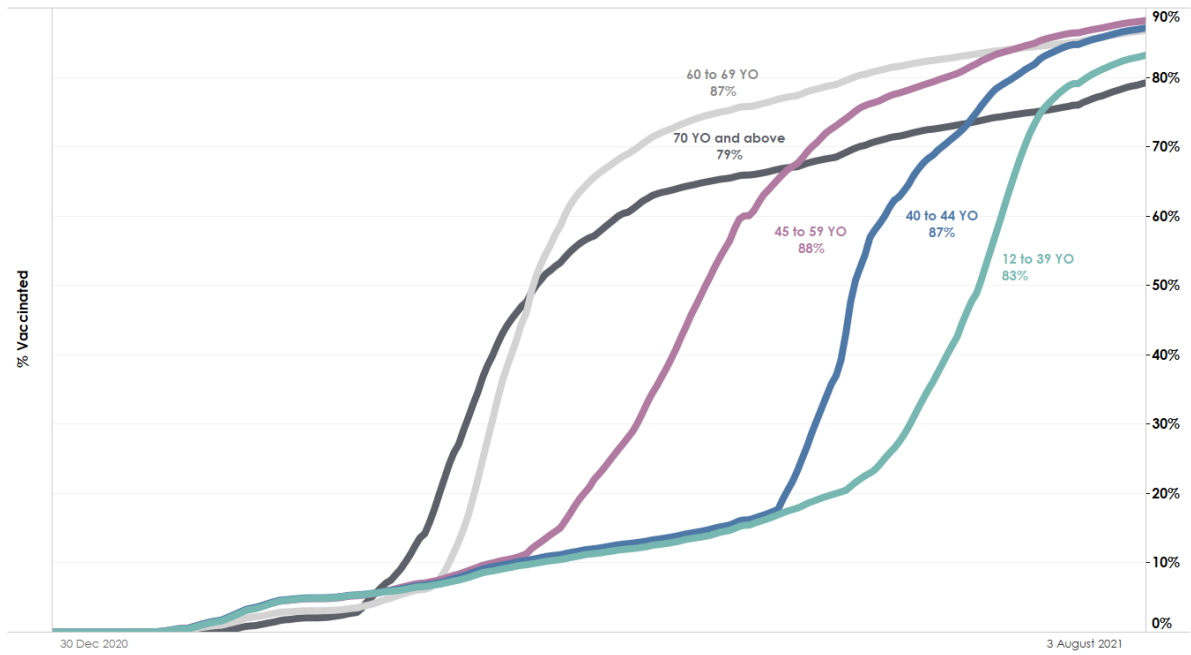
**Figure 2:** Percentage of Total Population who Received At Least First Dose<sup>2</sup> and Completed Full Regimen<sup>3</sup>



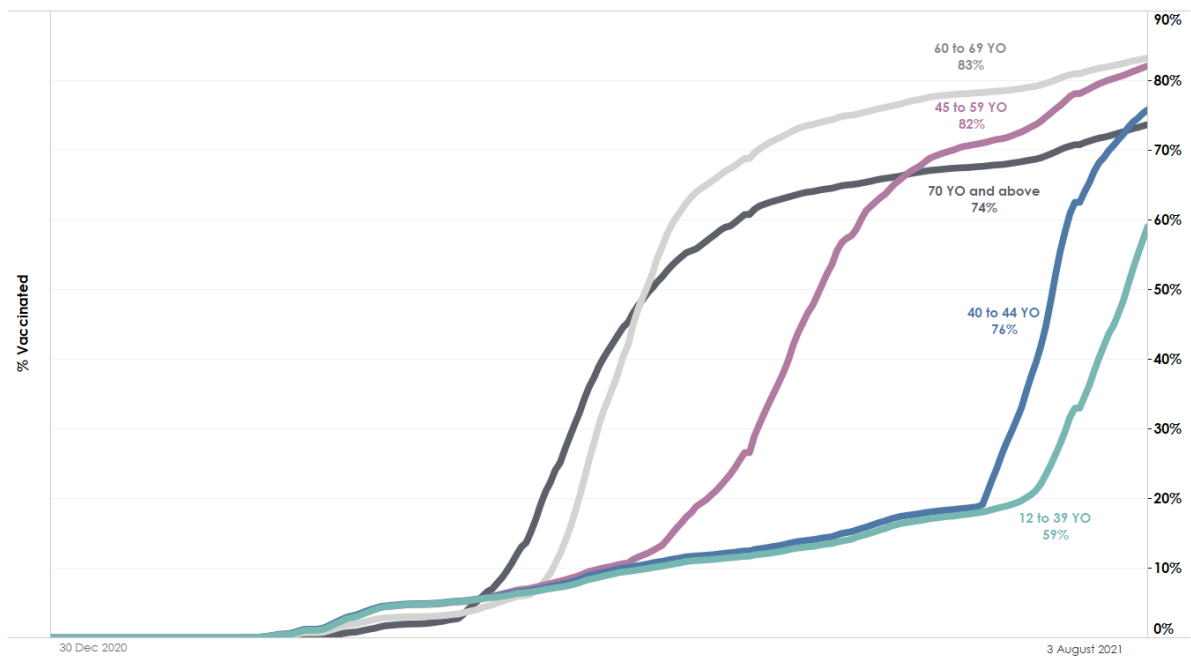
<sup>2</sup> Based on National Immunisation Registry data.

<sup>3</sup> Full regimen refers to individuals who have received both doses of the vaccine or one dose for vaccinated recovered individuals.

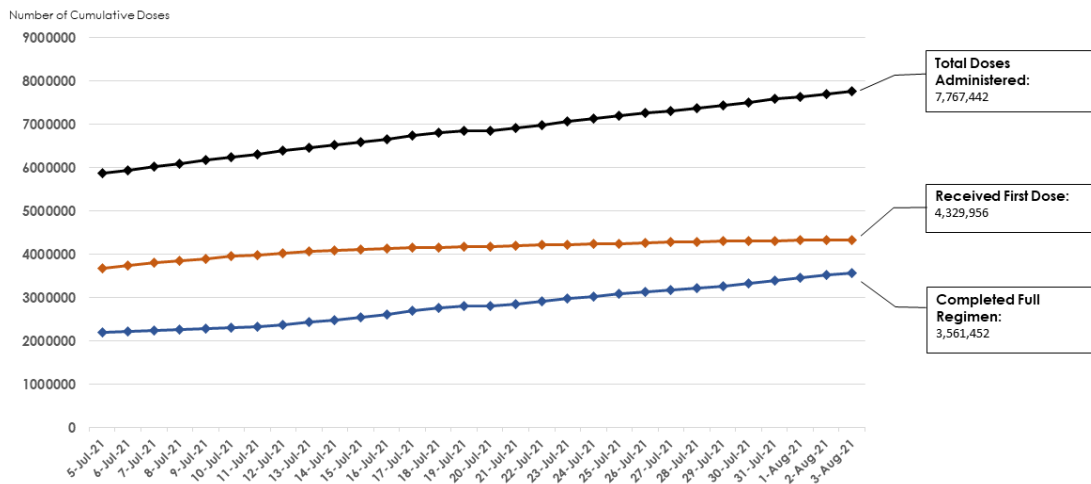
**Figure 3:** Percentage of Vaccinated Individuals who Received At Least First Dose by Age Group



**Figure 4:** Percentage of Individuals who Completed Full Regimen of COVID-19 Vaccine by Age Group



**Figure 5:** Total number of doses administered

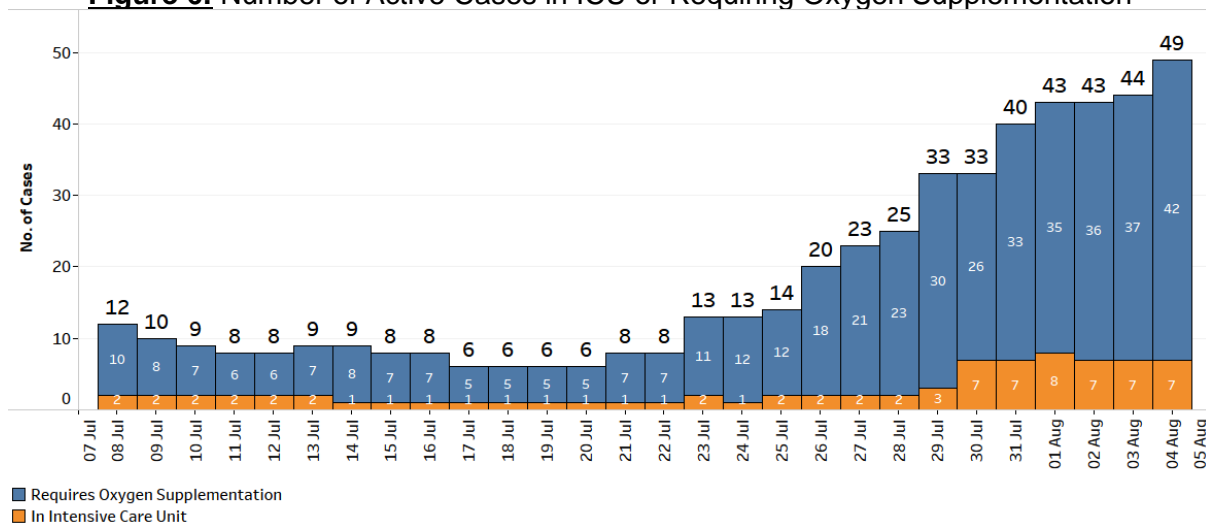


**Condition of confirmed cases**

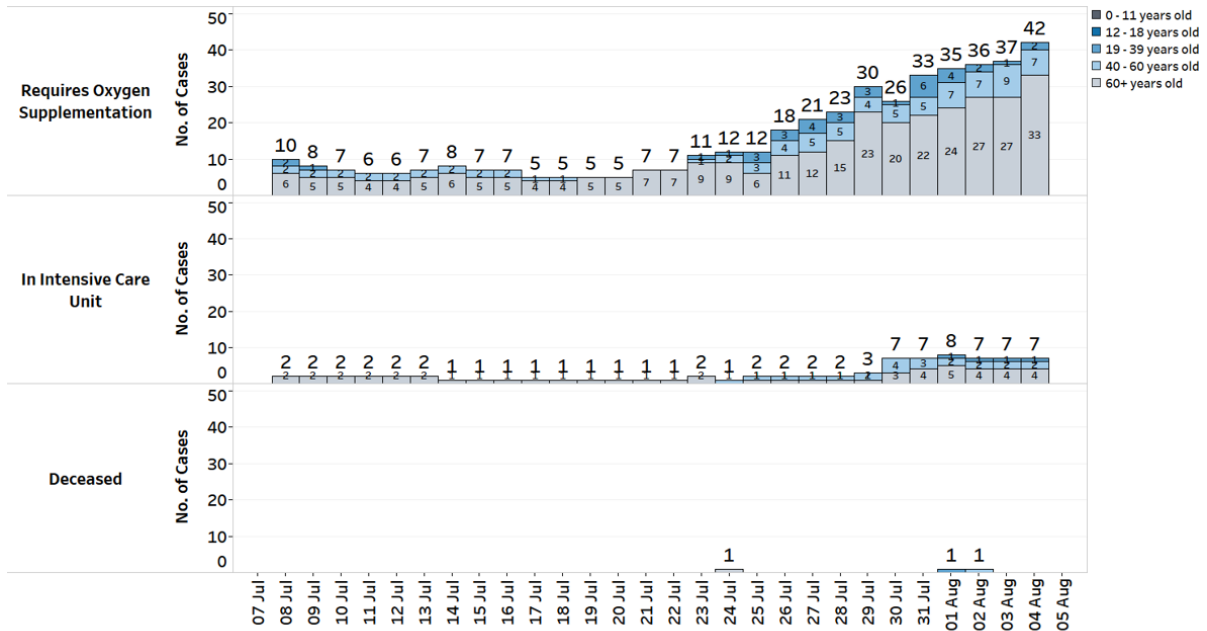
5. 555 cases are currently warded in hospital. Most are well and under observation. There are currently 42 cases of serious illness requiring oxygen supplementation, and 7 in critical condition in the intensive care unit (ICU). 8 amongst these 49 cases are fully vaccinated. Of these, 6 require oxygen supplementation while 2 require ICU care as they have underlying medical conditions. 37 seniors above 60 years, of whom 31 are completely unvaccinated or partially vaccinated, have fallen very ill.

6. Case 66894, a 58 year-old female Singaporean, has passed away from complications due to COVID-19 infection on 2 August 2021. She was a household contact of a case who had visited Samy’s Curry Restaurant, and was confirmed to have COVID-19 infection on 29 July. She had not been vaccinated against COVID-19, and had no underlying medical condition. In total, 39 have passed away from complications due to COVID-19 infection.

**Figure 6:** Number of Active Cases in ICU or Requiring Oxygen Supplementation

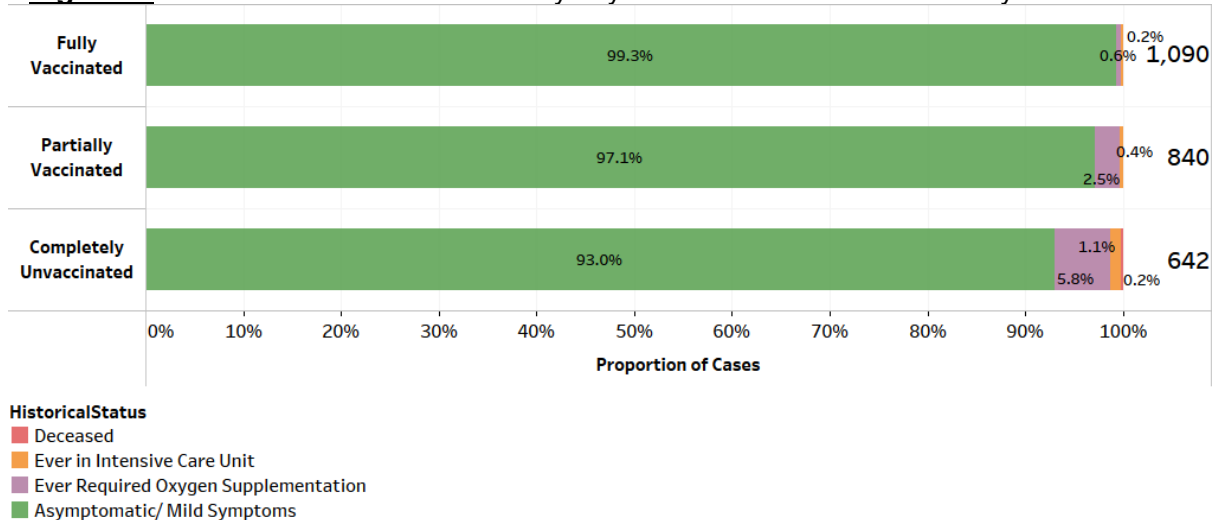


**Figure 7:** Deaths and Active Cases in ICU or Requiring Oxygen Supplementation, by Age Group



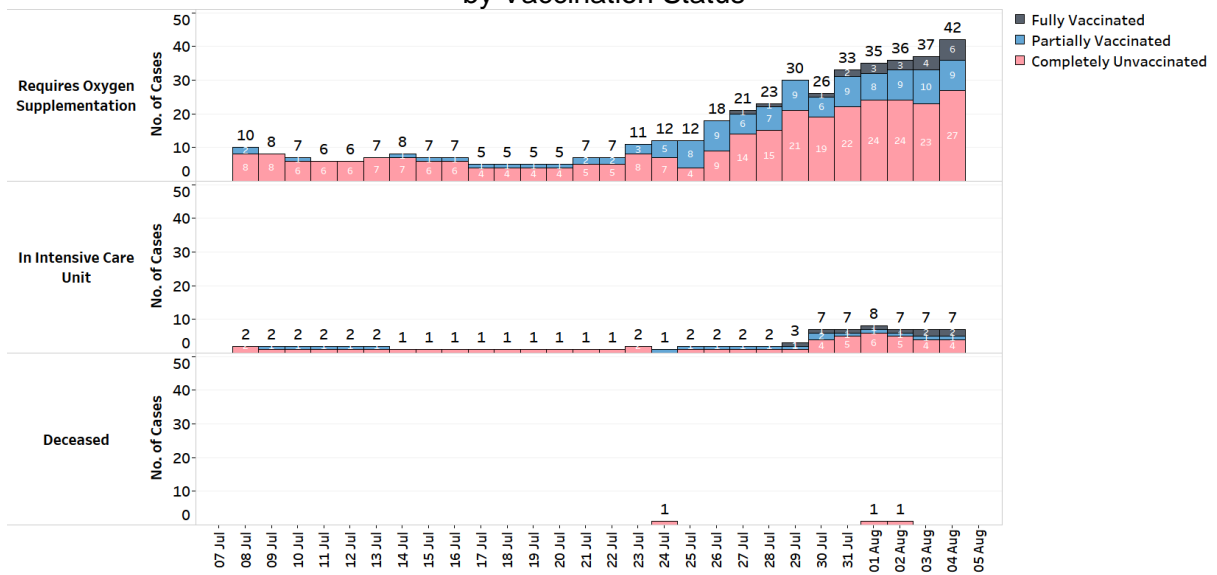
7. There is continuing evidence that vaccination helps to prevent serious disease when one gets infected. Over the last 28 days, 77 local cases required oxygen supplementation, were admitted to ICU or passed away. 45 are unvaccinated, 24 are partially vaccinated and 8 are fully vaccinated.

**Figure 8:** Local Cases in the Last 28 Days by Vaccination Status & Severity of Condition<sup>4</sup>



<sup>4</sup> Fully vaccinated - more than 14 days after completing vaccination regimen (both doses of the vaccine or one dose for recovered individuals). Partially vaccinated – received 1 dose of 2-dose vaccine or COVID-positive within 14 days of completing vaccination regimen.

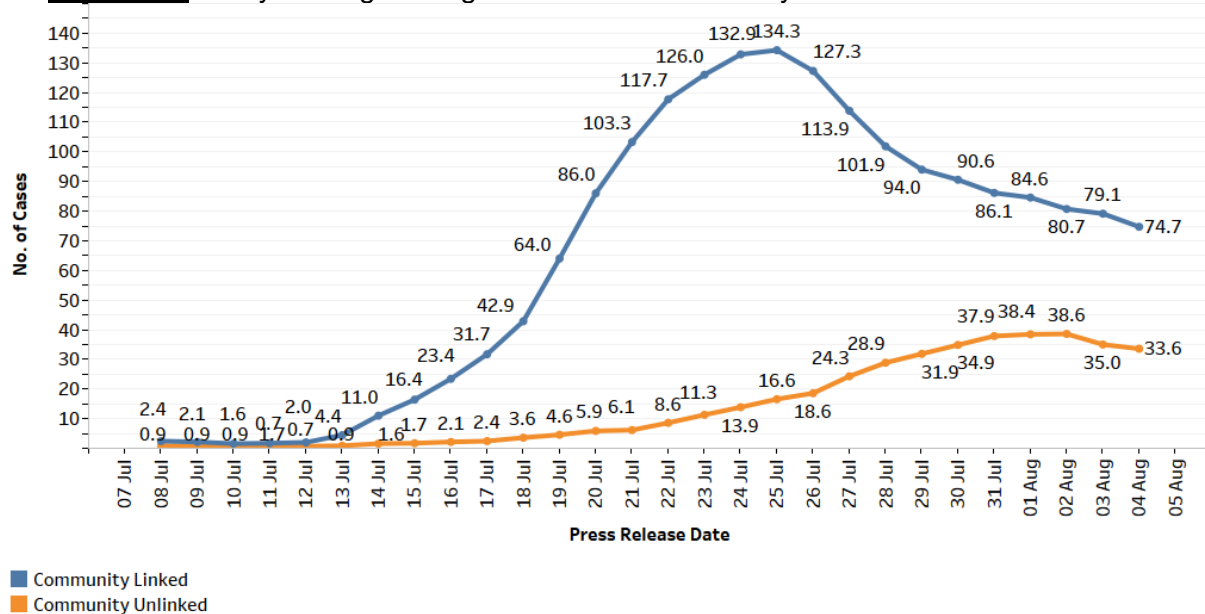
**Figure 9:** Deaths and Active Cases in ICU or Requiring Oxygen Supplementation, by Vaccination Status<sup>4</sup>



**Summary of trends for local cases**

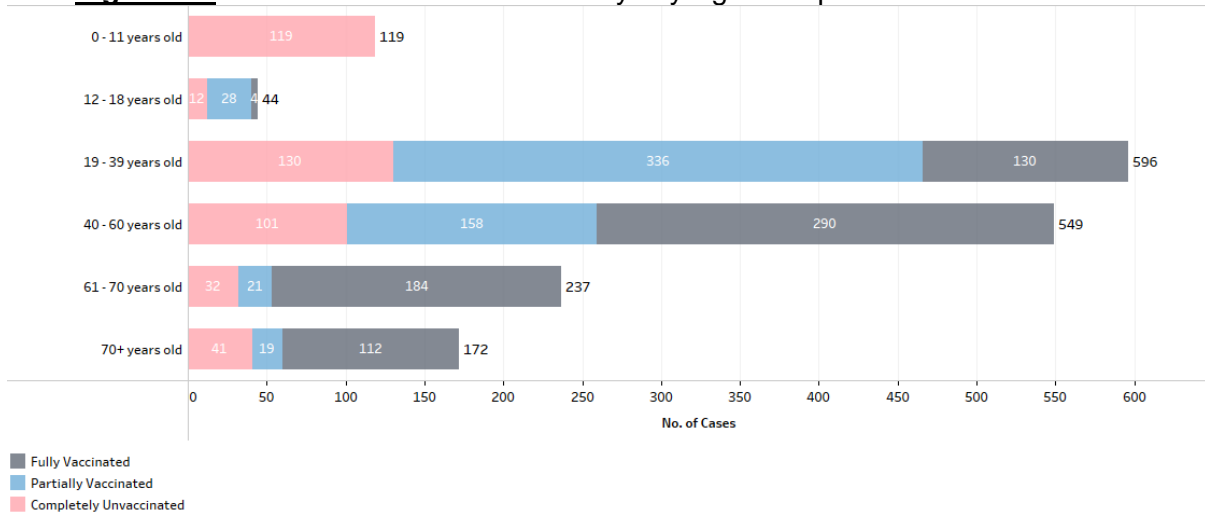
8. Overall, the number of new cases in the community has decreased from 915 cases in the week before to 758 cases in the past week. We are likely to continue to see high number of cases in the coming days as we step up efforts to detect them to contain their spread in the community. The number of unlinked cases in the community has increased from 202 cases in the week before to 235 cases in the past week. The 7-day moving average number of all linked community cases and all unlinked community cases are 74.7 and 33.6 respectively.

**Figure 10:** 7 Day Moving Average Number of Community Unlinked and Linked Cases<sup>5</sup>



<sup>5</sup> Incorporates re-classifications of earlier reported cases.

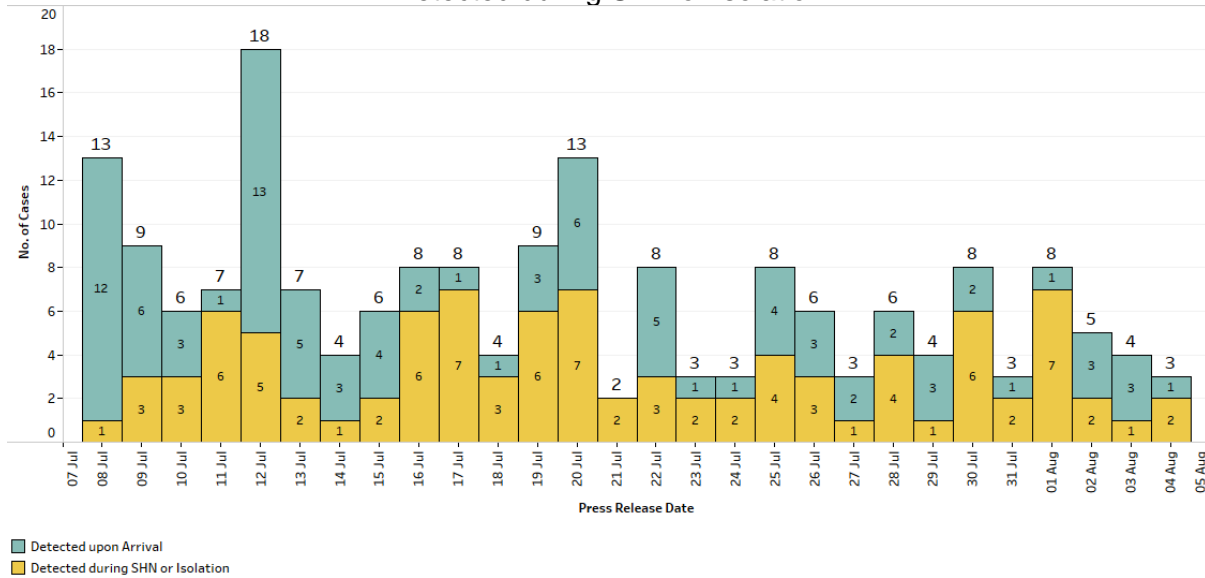
**Figure 11: Local Cases in the Last 14 Days by Age Group and Vaccination Status**



**Summary of trends for imported cases**

9. There are a total of 3 imported cases today. 1 was detected upon arrival in Singapore, while 2 developed the illness during SHN or isolation.

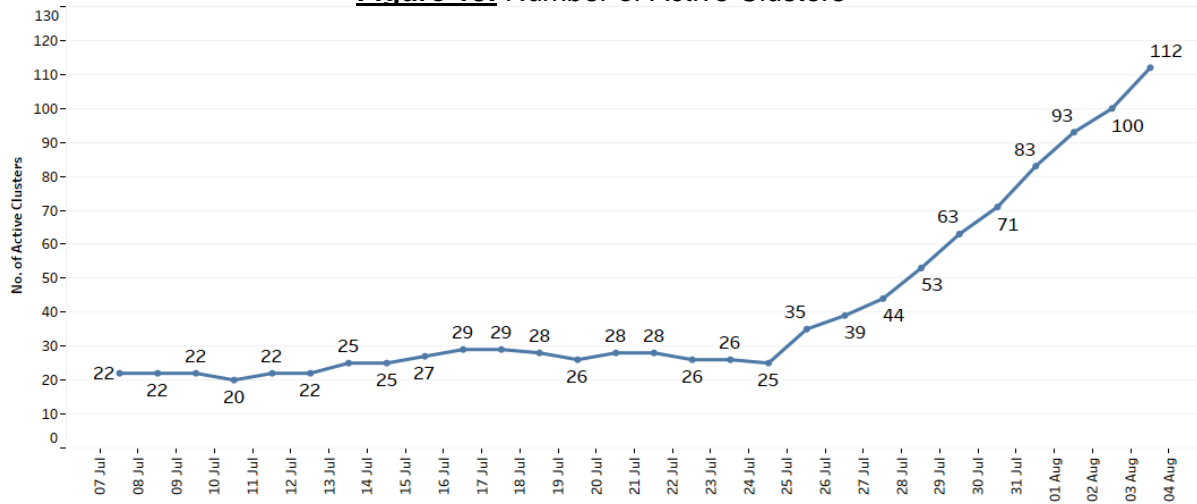
**Figure 12: Number of Imported Cases by Detected Upon Arrival/ Detected during SHN or Isolation**



**Active clusters under monitoring**

10. There are 12 new clusters today. In total, there are currently 112 active clusters, ranging between 3 and 1,115 infections.

**Figure 13: Number of Active Clusters**



**Figure 14: List of Active Clusters**

Cluster	New Cases	Total <sup>6</sup>
Case 66707 (new cluster)	4	5
Case 66766 (new cluster)	1	3
Case 66922 (new cluster)	1	3
Case 66998 (new cluster)	1	3
Case 67014 (new cluster)	2	3
Case 67051 (new cluster)	2	4
Case 67069 (new cluster)	2	3
Case 67236 (new cluster)	1	3
Case 67276 (new cluster)	2	5
Case 67278 (new cluster)	2	3
Case 67283 (new cluster)	5	6
Case 67534 (new cluster)	2	3
Kian Hiap Construction	2	9
Case 67343	4	7
Jurong Fishery Port/ Hong Lim Market & Food Centre*	9	1,115
Case 66449	1	14
Case 66844	2	8
Case 66774	1	7
Case 67048	1	8
Case 66567	3	21
Home's Favourite Pte Ltd	2	14
Case 67226	2	5
Case 65999	1	5
Institution S2 Selarang Park Complex	2	8
KTV lounges/clubs	1	252

<sup>6</sup> Includes new cases added today.



Cluster	New Cases	Total <sup>6</sup>
Case 65972	1	4
Changi General Hospital	0	3
Case 66940	0	4
Case 67017	0	3
Case 67078	0	3
Case 67227	0	3
Case 67436	0	3
Marina Bay Sands Casino	0	58
Samy's Curry Restaurant	0	55
Seng Leong Steel (Ent) Pte Ltd	0	5
Westlite Mandai Dormitory	0	9
Case 66804	0	5
Case 66754	0	5
Case 67085	0	4
Case 67204	0	3
Case 67297	0	3
Case 65952	0	5
Case 66929	0	5
Case 65929	0	4
Case 66764	0	3
Case 66868	0	3
Case 66888	0	3
Case 66913	0	3
Case 67004	0	4
Case 67041	0	5
Yishun Community Hospital	0	4
Case 66391	0	3
Case 66713	0	3
Case 66784	0	4
Case 66807	0	5
Punggol Primary School	0	15
Case 66851	0	5
Case 65751	0	8
Case 66623	0	3
Case 65793	0	3
Case 66240	0	4
Case 66790	0	3
Case 66995	0	3
Case 66473	0	4
Zuellig Pharma	0	7
Case 66464	0	7
Case 66370	0	4

Cluster	New Cases	Total <sup>6</sup>
Westlite Juniper Dormitory	0	15
Case 64697	0	76
Case 66293	0	3
Case 65882	0	4
Case 66142	0	3
Case 66450	0	3
Case 66458	0	4
Case 66482	0	4
Case 66915	0	6
Case 66538	0	4
Case 66517	0	3
Case 66487	0	4
Case 66468	0	3
Case 66462	0	3
Case 66215	0	4
Case 66106	0	3
Case 66377	0	5
Case 66435	0	6
Case 65893	0	6
Case 66542	0	3
Case 66413	0	4
Case 64752	0	8
PSC Express Pte Ltd	0	5
Case 66259	0	4
Case 65360	0	10
Case 65695	0	3
Case 65721	0	4
Case 66007	0	4
Apex Medical Centre (Jurong)	0	3
Case 65754	0	3
Case 65979	0	3
Case 65132	0	3
Case 66168	0	3
Case 65846	0	3
Case 65791	0	4
Case 65342	0	3
Case 65484	0	5
Case 65365	0	3
Case 64735	0	6
Case 65231	0	4
Case 64599	0	6
Case 64782	0	3

Cluster	New Cases	Total <sup>6</sup>
Case 64850	0	3
Khoi Grill & Hotpot	0	8
Case 64642	0	3

\* Please refer to Annex A for the affected markets and food centres.

### Closure of Yuhua Hawker Centre

11. MOH is investigating cases of COVID-19 infection involving markets and food centres which are likely seeded by fishmongers who visited Jurong Fishery Port to collect their stock and sell at the markets and food centres. We have detected 7 cases amongst individuals who worked in or visited Yuhua Hawker Centre (347 Jurong East Avenue 1), and our epidemiological investigations have found that there is likely ongoing transmission at the hawker centre. To break the chain of transmission and enable deep cleaning of the premises, Yuhua Hawker Centre will be closed to all members of the public from 5 August to 19 August 2021. All individuals who work in the hawker centre have been placed on quarantine, and will be tested during quarantine.

12. To quickly uncover any community infection cases, we will also extend free COVID-19 testing to members of the public who had visited Yuhua Market and Hawker Centre between 21 July and 4 August. Please refer to <https://go.gov.sg/yuhua-testing> for details on the testing operations.

13. All visitors to Yuhua Market and Hawker Centre are advised to monitor their health closely, and minimise social interactions as far as possible, for 14 days from their date of visit or interaction. They are encouraged to see a doctor immediately if they feel unwell.

14. Please refer to MOH's daily Situation Report ([www.moh.gov.sg/covid-19/situation-report](http://www.moh.gov.sg/covid-19/situation-report)) for details.

**MINISTRY OF HEALTH**  
**4 AUGUST 2021**

---



**List of Markets & Food Centres Linked to Jurong Fishery Port Cluster**

Clusters:

1. Clementi 448 Market and Food Centre
2. Haig Road Market & Food Centre
3. Yuhua Market & Hawker Centre

With 3 or more cases:

1. Admiralty Wet Market
2. 216 Bedok Food Centre and Market
3. 630 Bedok Reservoir Road Market and Food Centre
4. Boon Lay Place Food Village
5. Bukit Panjang Wet Market
6. Bukit Timah Wet Market
7. Fajar Market
8. 105 Hougang Avenue 1 Market
9. Taman Jurong Market
10. Teban Garden Market

With fewer than 3 cases:

1. Circuit Road Market and Food Centre (80 Circuit Road)
2. 353 Clementi Market
3. 84 Marine Parade Central Market and Food Centre
4. Mei Ling Market & Food Centre
5. 118 Rivervale Drive Market
6. 622 Yew Tee Market