



**FOR IMMEDIATE RELEASE**

## **UPDATE ON LOCAL COVID-19 SITUATION**

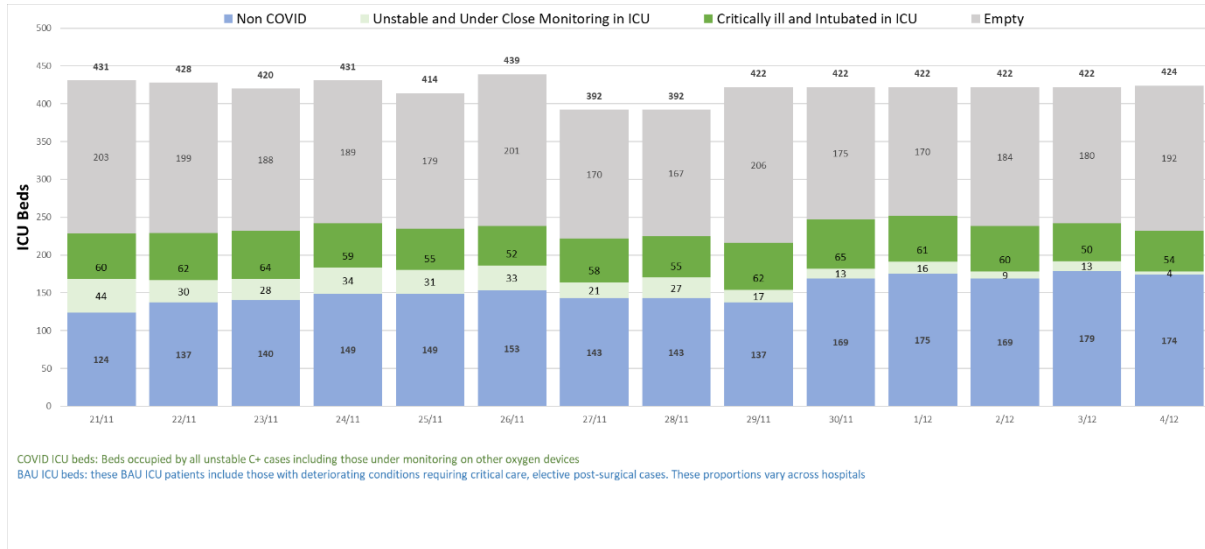
### **Summary of local situation**

- 893 cases remain warded in hospital. 179 cases require oxygen supplementation in the general ward, 4 are unstable and under close monitoring in the intensive care unit (ICU), and 54 are critically ill and intubated in the ICU. The current overall ICU utilisation rate is 54.7%.
- Over the last 28 days, of the 52,628 infected individuals, 98.7% had no or mild symptoms, 0.8% required oxygen supplementation in the general ward, 0.2% were in the ICU, and 0.2% has died.
- As of 3 December 2021, the total number of individuals who have completed their full regimen/received two doses of COVID-19 vaccines constitutes 96% of the eligible population, and 87% of the total population. As a percentage of total population, 87% has received at least one dose, and 28% has received their booster shots.
- Over the past day, 1,521 cases were discharged, of whom 226 are seniors aged 60 years and above. 743 new cases of COVID-19 infection were detected, with 707 in the community, 24 in the migrant worker dormitories and 12 imported cases. The weekly infection growth rate is 0.63.

## Situation at Hospitals

1. As of 4 December 2021, 179 cases require oxygen supplementation in the general ward, 4 are unstable and under close monitoring in the ICU to prevent further deterioration, and 54 are critically ill and intubated in the ICU. The current overall ICU utilisation rate is 54.7%.

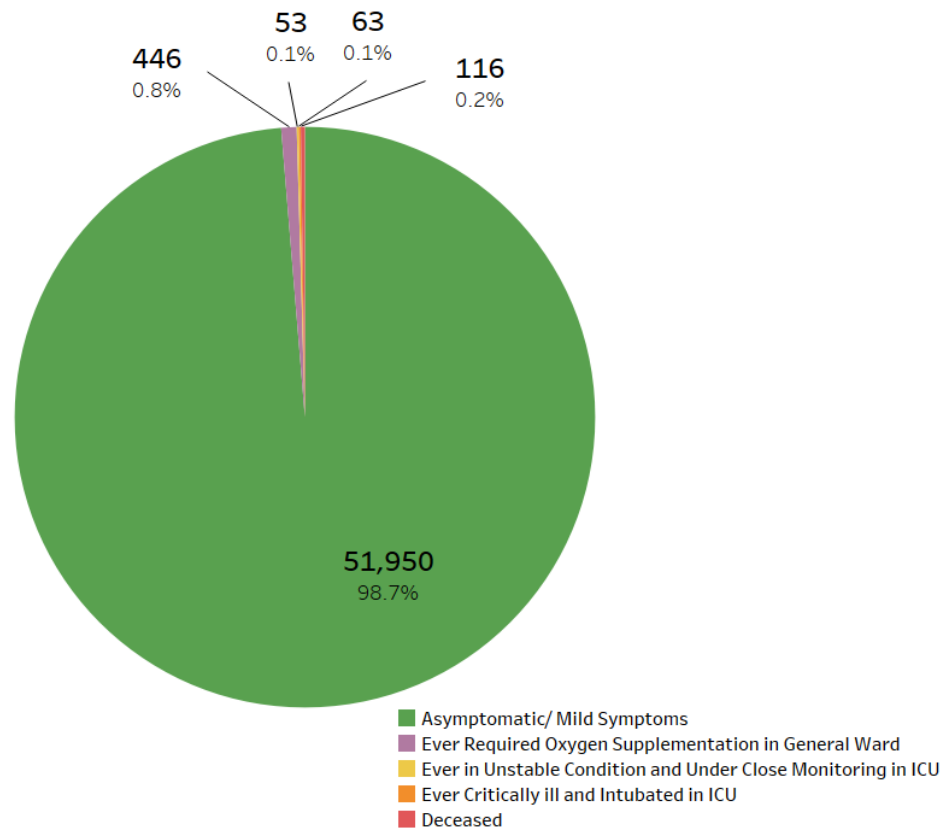
**Figure 1: Daily Adult ICU Bed Utilisation**



## Status of Patients

2. Over the last 28 days, 98.7% of local infected cases were asymptomatic or had mild symptoms, 0.8% required oxygen supplementation in the general ward, 0.1% were unstable and under close monitoring in the ICU to prevent further deterioration, and 0.1% had been critically ill and intubated in the ICU.

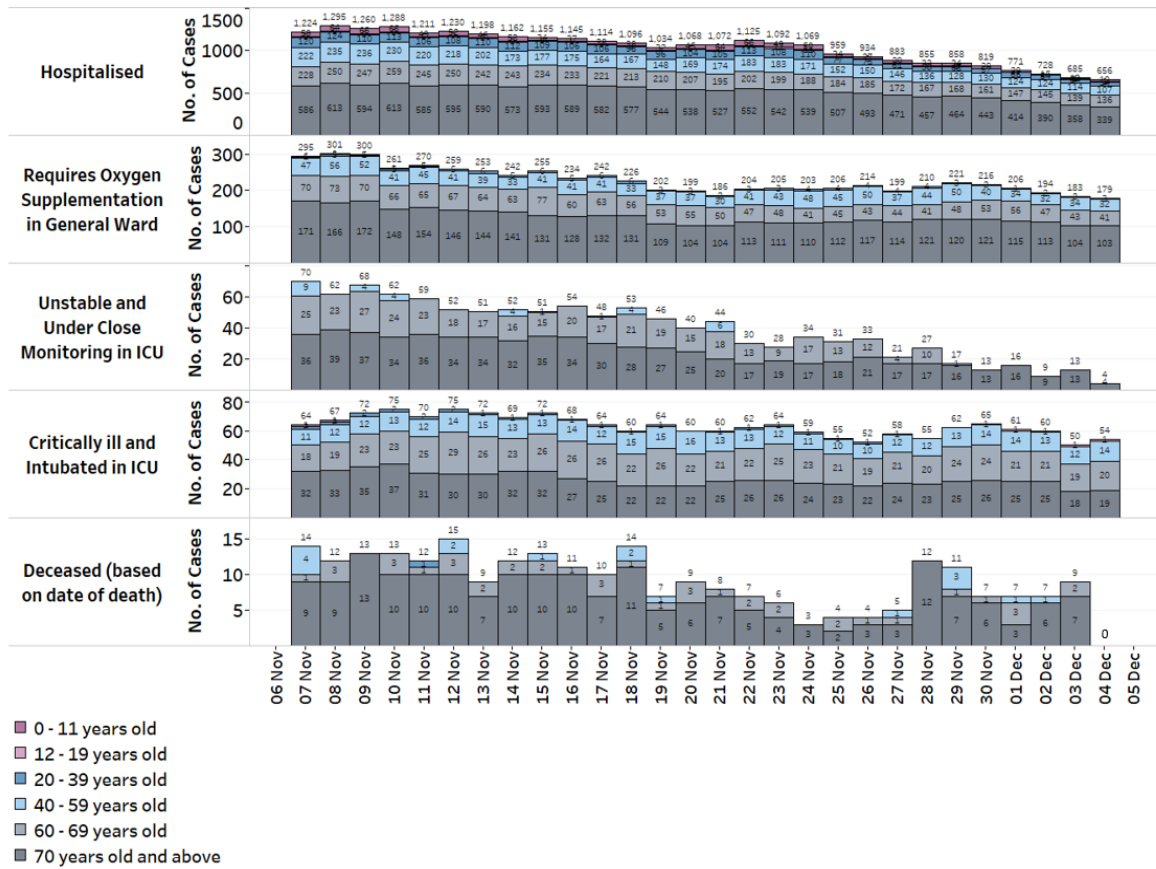
**Figure 2:** Local Cases in the Last 28 Days by Severity of Condition<sup>1</sup>



<sup>1</sup> Includes only new cases reported in the past 28 days. Based on cases' worst-ever condition; deceased cases previously in ICU are counted under 'Deceased' and not under 'Ever Critically ill and Intubated in ICU'.

3. Seniors 60 years old and above, especially if unvaccinated, continue to be more adversely affected by COVID-19:

**Figure 3:** Patients Needing Oxygen Supplementation, ICU Care or Died<sup>2</sup>, by Age Groups



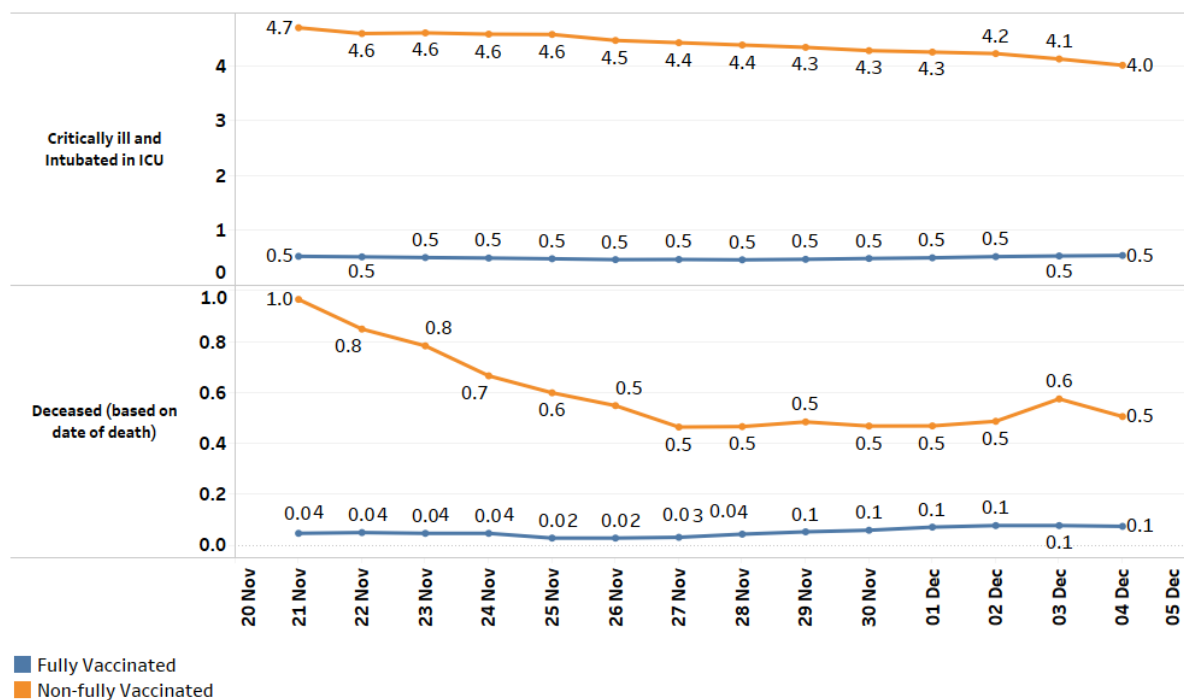
<sup>2</sup> May differ from the deaths reported for the day as the latter includes those who have passed on earlier, but whose cause of death was investigated and confirmed only later, e.g. Coroner's cases.

## Vaccination

4. As of 3 December 2021, the total number of individuals who have completed their full regimen/ received two doses of COVID-19 vaccines constitutes 96% of the eligible population, and 87% of the total population. As a percentage of total population, 87% has received at least one dose, and 28% has received their booster shots.

5. Over the past 7 days, the number of fully vaccinated and non-fully vaccinated cases who are critically ill in the ICU are at 0.5 and 4.0 per 100,000 population respectively. Over the same period, the number of fully vaccinated and non-fully vaccinated cases who died are 0.1 and 0.5 per 100,000 population respectively. Among seniors aged 60 and above, the number of fully vaccinated and non-fully vaccinated cases who are critically ill in the ICU are 2.0 and 35.2 respectively. The number of fully vaccinated and non-fully vaccinated seniors who died are 0.3 and 5.4 respectively.

**Figure 4:** 7-Day Moving Average of Number of Deaths and Active Cases in ICU, per 100,000 Population by Vaccination Status <sup>3</sup>



<sup>3</sup> Non-fully vaccinated comprises persons who are partially vaccinated and completely unvaccinated.

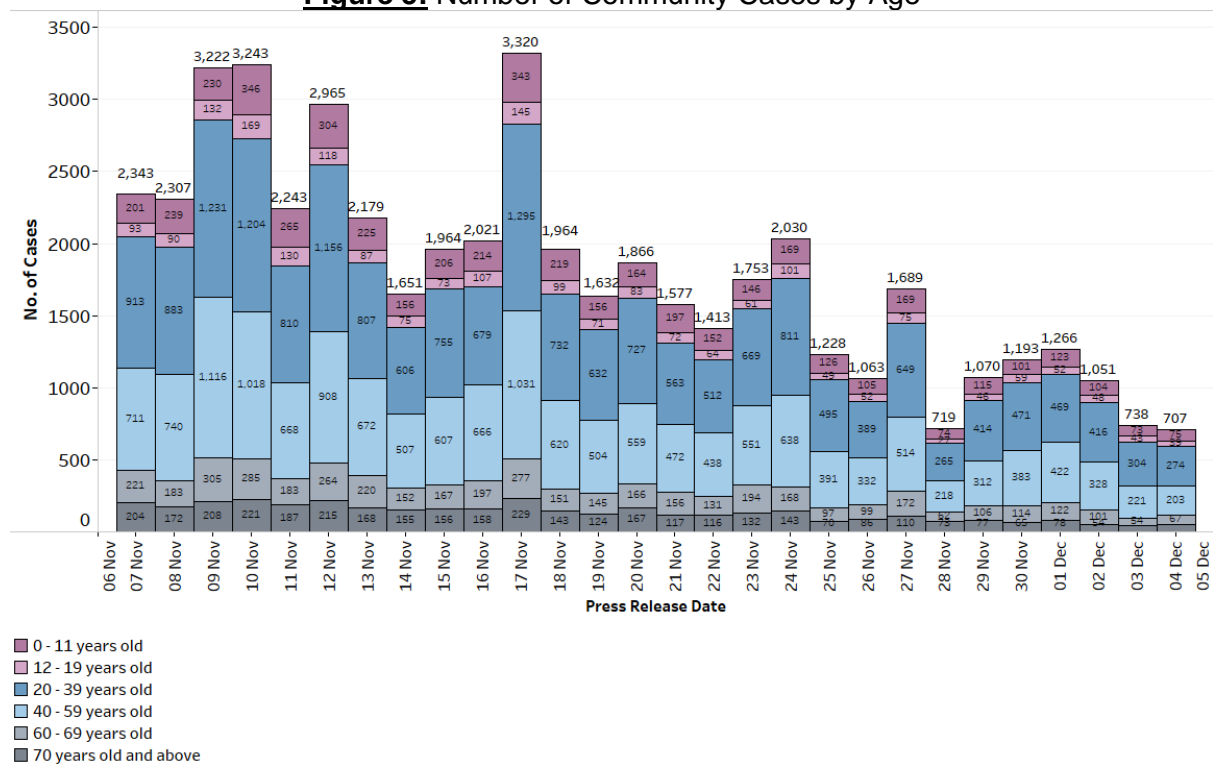
## Inflow and Outflow of Cases

6. Over the past day, 1,521 cases were discharged, of whom 226 are seniors aged 60 years and above.

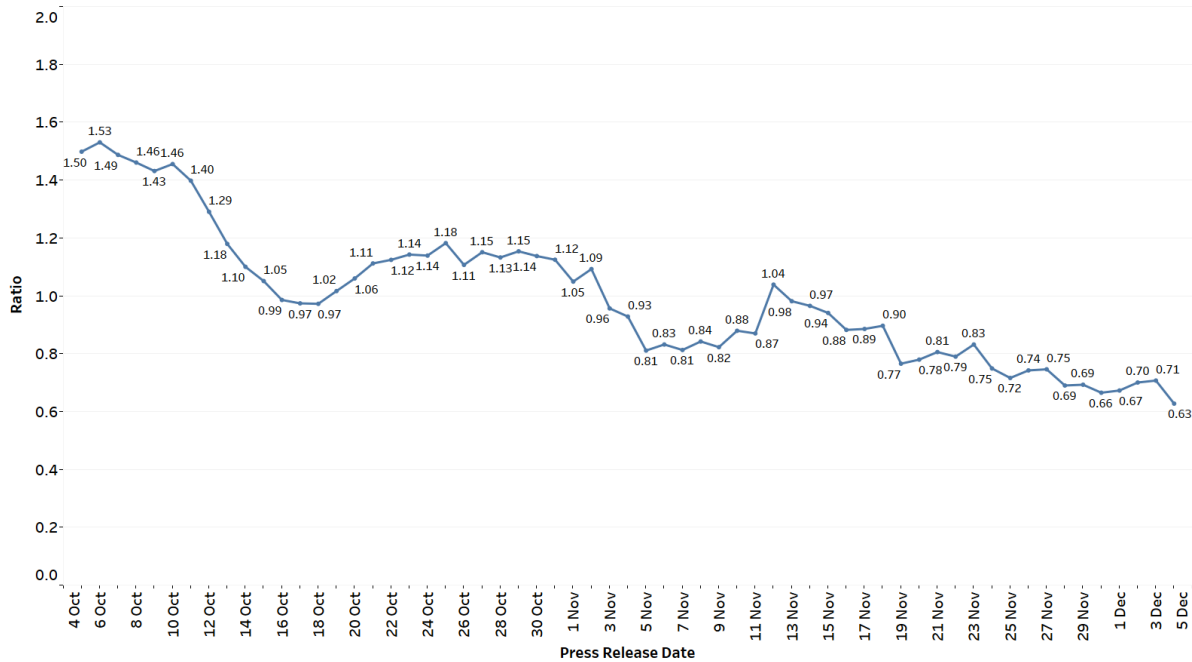
7. As of 4 December 2021, 12pm, the Ministry of Health has detected a total of 743 new cases of COVID-19 infection, comprising 707 community cases, 24 dormitory resident cases and 12 imported cases. Amongst the community cases today are 116 seniors who are aged 60 years and above. The ratio of community cases for the past week over the week before is 0.63.

8. 2 more cases, both aged 70 years, have passed away from complications due to COVID-19 infection. They had various underlying medical conditions.

**Figure 5: Number of Community Cases by Age**



**Figure 6:** Week-on-week Infection Ratio<sup>4</sup>



9. We are closely monitoring the cluster listed below, which has already been ringfenced through tracing, testing and isolation.

**Figure 7:** Large Clusters with New Cases

Cluster	New Cases	Total <sup>5</sup>	Remarks
THK Home For Disabled @ Sembawang	4	19	Transmission amongst residents. Of the 19 cases, all are residents.

10. Please refer to MOH’s daily Situation Report ([www.moh.gov.sg/covid-19/situation-report](http://www.moh.gov.sg/covid-19/situation-report)) for details.

**MINISTRY OF HEALTH  
4 DECEMBER 2021**

<sup>4</sup> Ratio of community cases in the past week over the week before.

<sup>5</sup> Includes new cases added today.