



FOR IMMEDIATE RELEASE

UPDATE ON LOCAL COVID-19 SITUATION

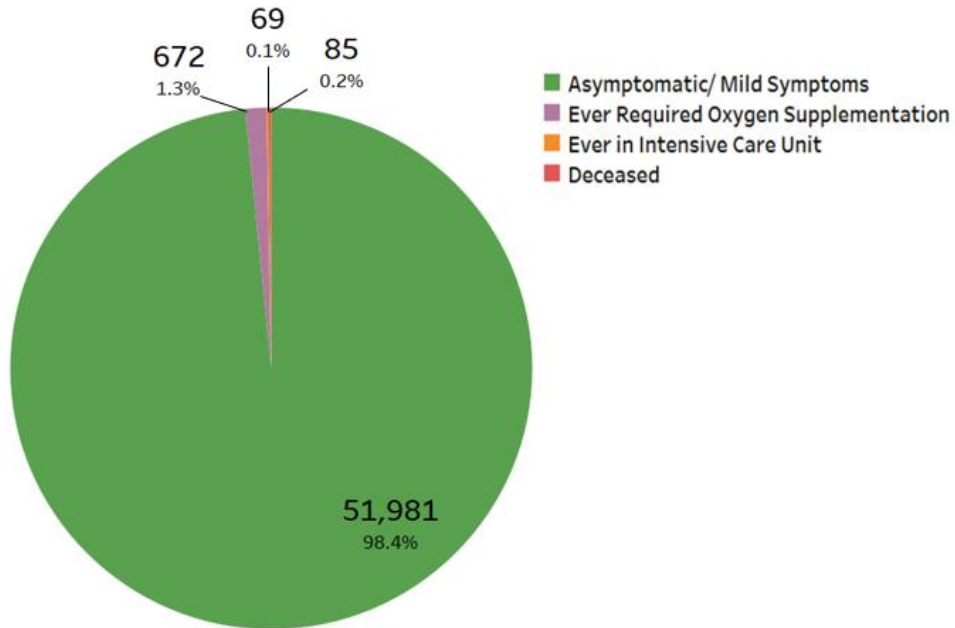
Summary of local situation

- 1,569 cases are currently warded in hospital. 302 cases require oxygen supplementation and 40 are in the intensive care unit (ICU).
- Over the last 28 days, of the 52,807 infected individuals, 98.4% had no or mild symptoms, 1.3% required oxygen supplementation, 0.1% required ICU care, and 0.2% has died.
- As of 8 October 2021, 83% of our population has completed their full regimen/ received two doses of COVID-19 vaccines, and 85% has received at least one dose.
- As of 9 October 2021, 12pm, the Ministry of Health has detected a total of 3,703 new cases of COVID-19 infection in Singapore, with 2,868 in the community, 832 in the migrant worker dormitories and 3 imported cases.

Situation Update

1. Over the last 28 days, 98.4% of local infected cases were asymptomatic or had mild symptoms, 1.3% required oxygen supplementation, and 0.1% had been in the ICU. Amongst those who required oxygen supplementation and ICU, 49.5% were fully vaccinated and 50.5% were unvaccinated/ partially vaccinated.

Figure 1: Local Cases in the Last 28 Days by Severity of Condition¹

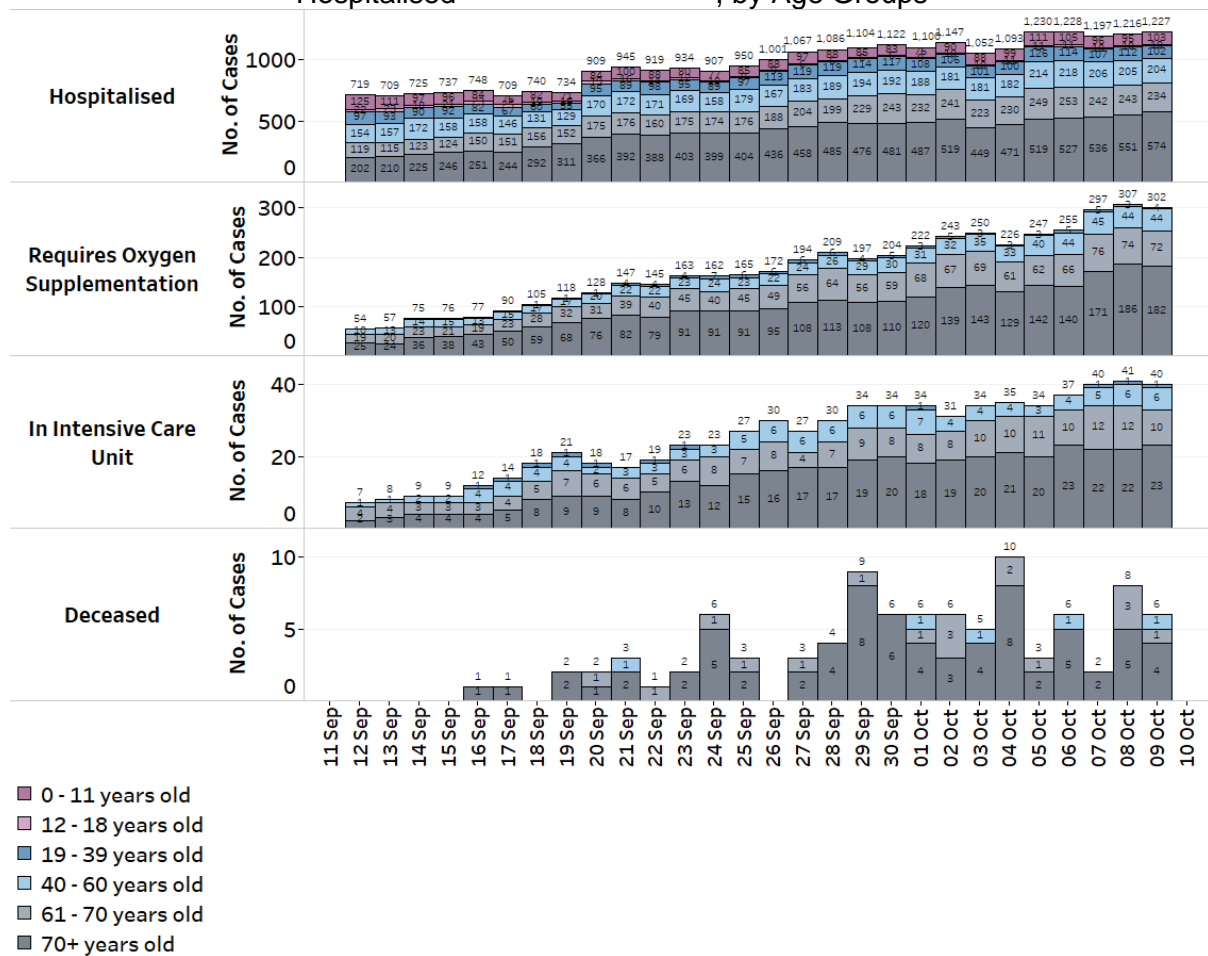


¹ Includes only new cases reported in the past 28 days. Based on cases' worst-ever condition; deceased cases previously in ICU are counted under 'Deceased' and not under 'Ever in Intensive Care Unit'.

2. 11 more cases have passed away from complications due to COVID-19 infection.² Of these, 5 were male Singaporeans and 6 were female Singaporeans, aged between 56 and 90 years. Amongst them, 4 had been unvaccinated against COVID-19, 3 had been partially vaccinated and 4 had been vaccinated. 10 of them had various underlying medical conditions, while a partially vaccinated case had no known medical conditions. The 56 year-old case had been partially vaccinated against COVID-19, and had multiple underlying medical conditions.

3. Amongst those who have passed away over the last 28 days, 30.6% were fully vaccinated and 69.4% were unvaccinated/ partially vaccinated.

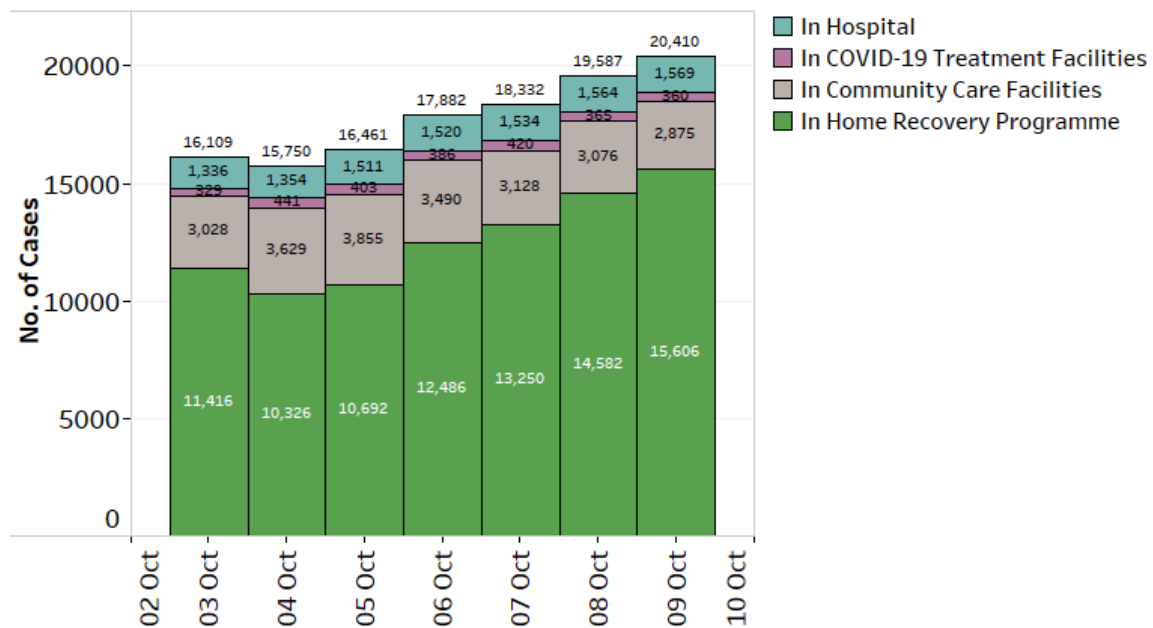
Figure 2: Deaths and Active Cases in ICU, Requiring Oxygen Supplementation or Hospitalised, by Age Groups



² Cases 83730, 83438, 85049, 88929, 98931, 90840, 91954, 94840, 98705, 102291 and 116029.

4. As of 9 October 2021, 12pm, amongst all COVID-19 community cases who have been onboarded or admitted, 15,606 (76.5%) cases are undergoing Home Recovery. 2,875 (14.1%) cases are in Community Care Facilities, 360 (1.8%) cases are in COVID-19 Treatment Facilities, and 1,569 (7.7%) COVID-19 patients are currently warded in hospital, mostly for observation. 302 require oxygen supplementation, and 40 are in the ICU.

Figure 3: Breakdown of Number of Active Cases in Hospital, COVID-19 Treatment Facilities, Community Care Facilities, and Home Recovery Programme in the Last 7 Days



Vaccination progress

5. As of 8 October 2021, 83% of our population has completed their full regimen/ received two doses of COVID-19 vaccines, and 85% has received at least one dose.

6. We have administered a total of 9,401,855 doses of COVID-19 vaccines under the national vaccination programme (Pfizer-BioNTech Comirnaty and Moderna). In total, 4,599,302 individuals have received at least one dose of vaccine under the national vaccination programme, and 4,538,549 individuals having completed the full vaccination regimen. In addition, 211,620 doses of other vaccines recognised in the World Health Organization’s Emergency Use Listing (WHO EUL) have been administered, covering 111,898 individuals.

7. To date, we have invited about 600,000 eligible individuals to receive their booster doses. 392,555 individuals have received their booster shots and another 80,000 have booked their appointments.

Active clusters under close monitoring

8. We are closely monitoring the clusters listed below, which have already been ringfenced through tracing, testing and isolation.

Figure 4: Large Clusters with New Cases

Cluster	New Cases	Total ³	Remarks
MWS Christalite Methodist Home	2	91	Transmission amongst staff and residents. Of the 91 cases, 7 are staff and 84 are residents. New cases have already been quarantined.
Pasir Panjang Wholesale Centre	1	344	Transmission amongst workers and trade visitors. Of the 344 cases, 317 are workers at the market, 4 are trade visitors and 23 are household members of cases. New case has already been quarantined.
Learning Vision @ Changi Airport	1	16	Transmission amongst staff and students. Of the 16 cases, 2 are staff, 13 are students and 1 is a household member of case. New case has already been quarantined.
United Medicare Centre (Toa Payoh)	3	54	Transmission amongst staff and residents. Of the 54 cases, 11 are staff, 42 are residents, and 1 is a household member of a case. New cases have already been quarantined.
Toa Payoh/Kim Keat Avenue Dormitory	13	40	Intra-dormitory transmission amongst residents with no evidence of spread beyond dormitory. New cases have already been quarantined.

³ Includes new cases added today.

Summary of trends for local cases

9. As of 9 October 2021, 12pm, the Ministry of Health has detected a total of 3,703 new cases of COVID-19 infection in Singapore, comprising 2,868 community cases, 832 dormitory residents cases and 3 imported cases. Amongst the local cases today are 611 seniors who are above 60 years.

Figure 5: Number of Community Cases by Age

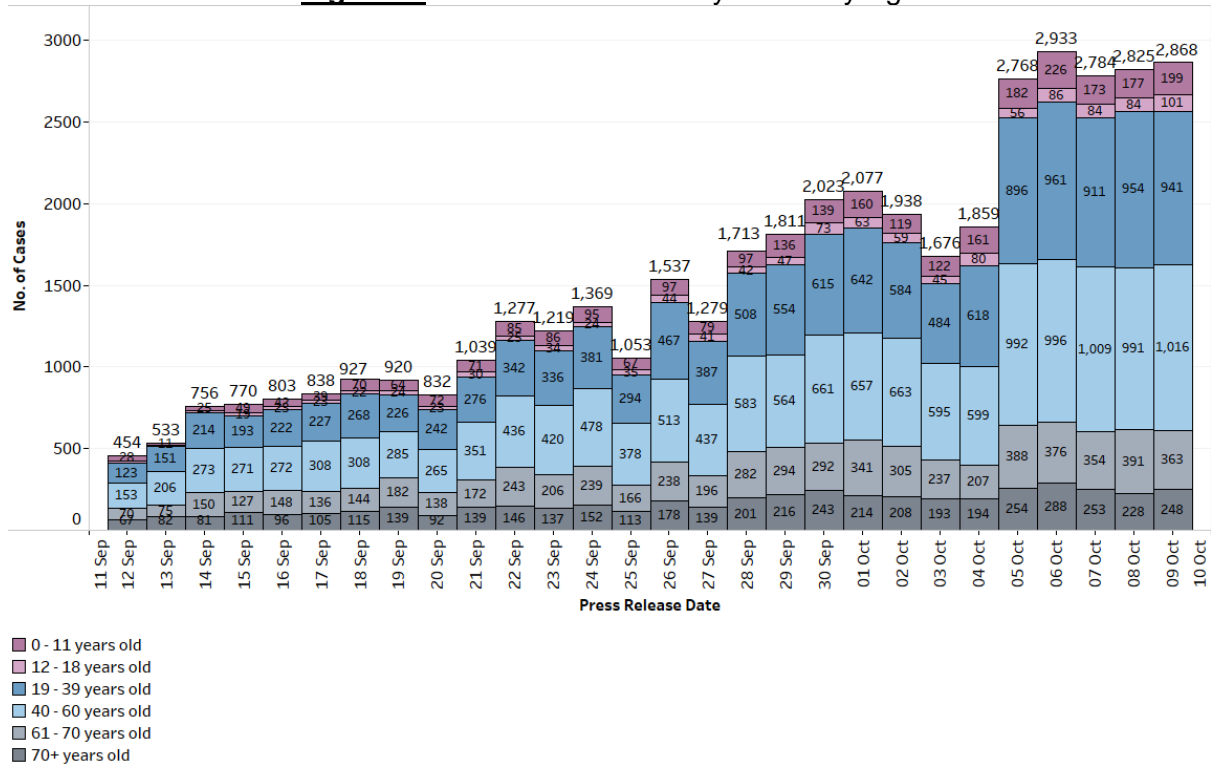
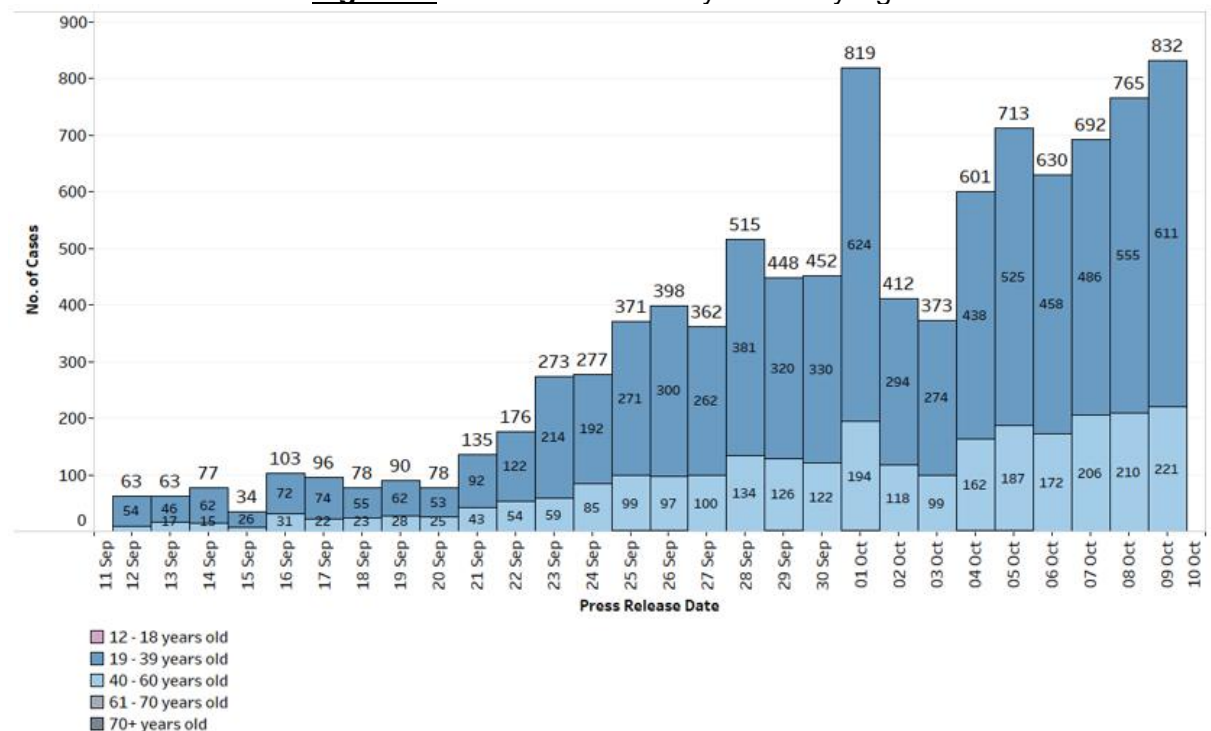


Figure 6: Number of Dormitory Cases by Age



10. Please refer to MOH's daily Situation Report (www.moh.gov.sg/covid-19/situation-report) for details.

MINISTRY OF HEALTH
9 OCTOBER 2021
