



FOR IMMEDIATE RELEASE

## UPDATE ON LOCAL COVID-19 SITUATION AND VACCINATION PROGRESS

### Summary of local situation

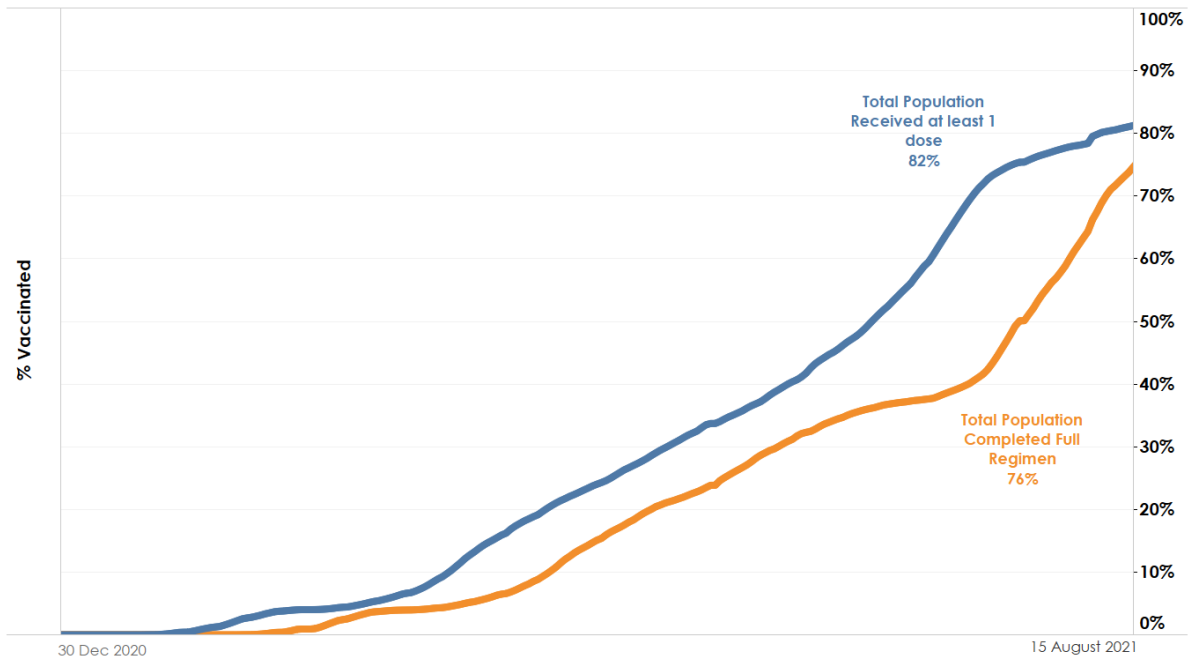
- As of 16 August 2021, 12pm, the Ministry of Health (MOH) has confirmed and verified that there are 48 cases of locally transmitted COVID-19 infection and 5 imported cases.
- 426 cases are currently warded in hospital. Most are well and under observation. There are currently 33 cases of serious illness requiring oxygen supplementation, and 7 in critical condition in the intensive care unit (ICU).
- Over the last 28 days, the percentage of unvaccinated who became severely ill or died is 9.8%, while that for the fully vaccinated is 1.2%.
- As of 15 August 2021, 76% of our population has completed their full regimen/ received two doses of COVID-19 vaccines, and 82% has received at least one dose.

### Update on vaccination progress

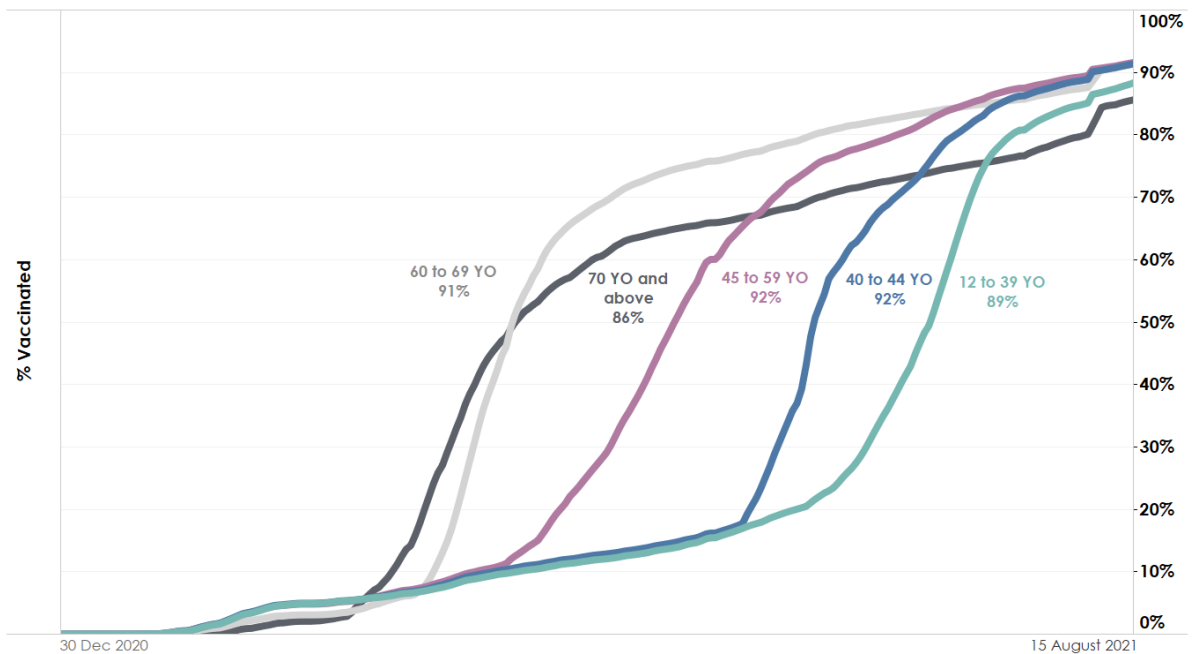
As of 15 August 2021, we have administered a total of 8,438,233 doses of COVID-19 vaccines under the national vaccination programme (Pfizer-BioNTech Comirnaty and Moderna), covering 4,432,081 individuals, with 4,136,498 individuals having completed the full vaccination regimen.

2. In addition, 149,107 doses of other vaccines recognised in the World Health Organization's Emergency Use Listing (WHO EUL) have been administered as of 15 August 2021, covering 83,796 individuals. In total, 76% of our population has completed their full regimen/ received two doses of COVID-19 vaccines, and 82% has received at least one dose.

**Figure 1:** Percentage of Total Population who Received At Least First Dose<sup>1</sup> and Completed Full Regimen<sup>2</sup> of NVP and WHO EUL Vaccines<sup>3</sup>



**Figure 2:** Percentage of Vaccinated Individuals who Received At Least First Dose of NVP and WHO EUL Vaccines by Age Group

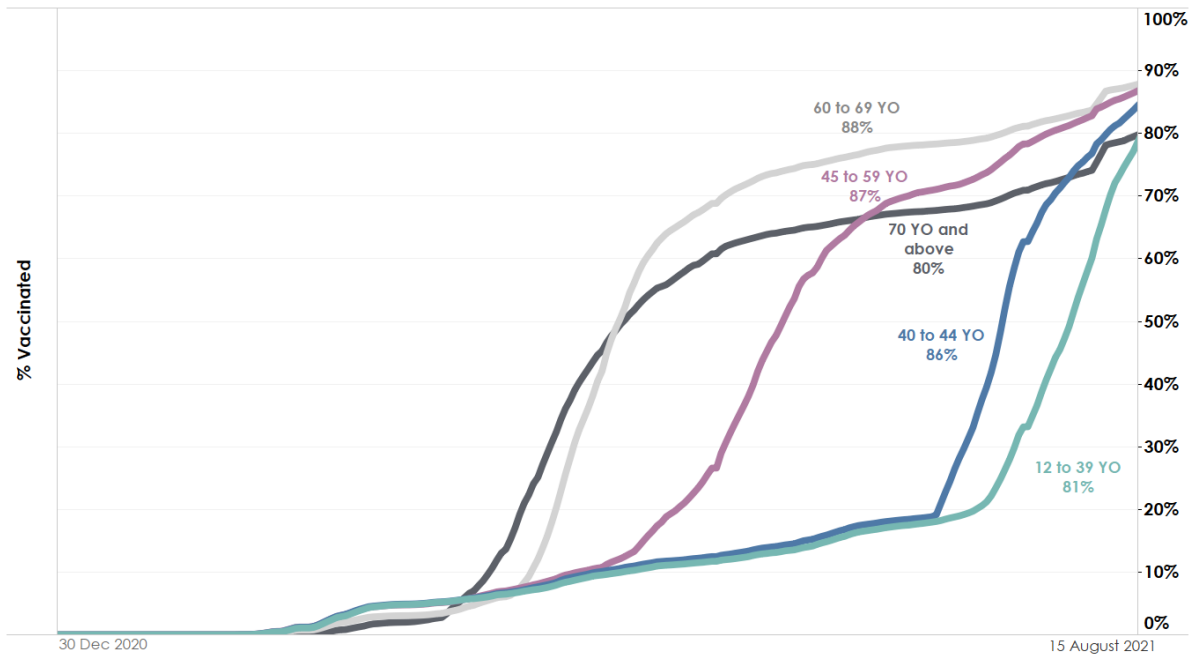


<sup>1</sup> Based on National Immunisation Registry data.

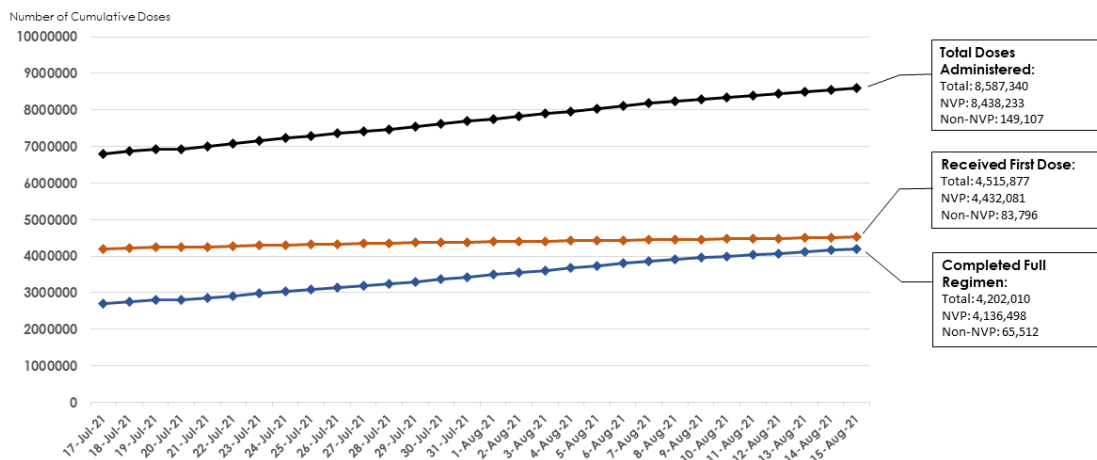
<sup>2</sup> Full regimen refers to individuals who have received both doses of the vaccine or one dose for vaccinated recovered individuals.

<sup>3</sup> Other vaccines recognised in the WHO EUL account for about 2% of the total population who received at least 1 dose and about 1% of total population who completed the full regimen.

**Figure 3:** Percentage of Individuals who Completed Full Regimen of NVP and WHO EUL Vaccines by Age Group



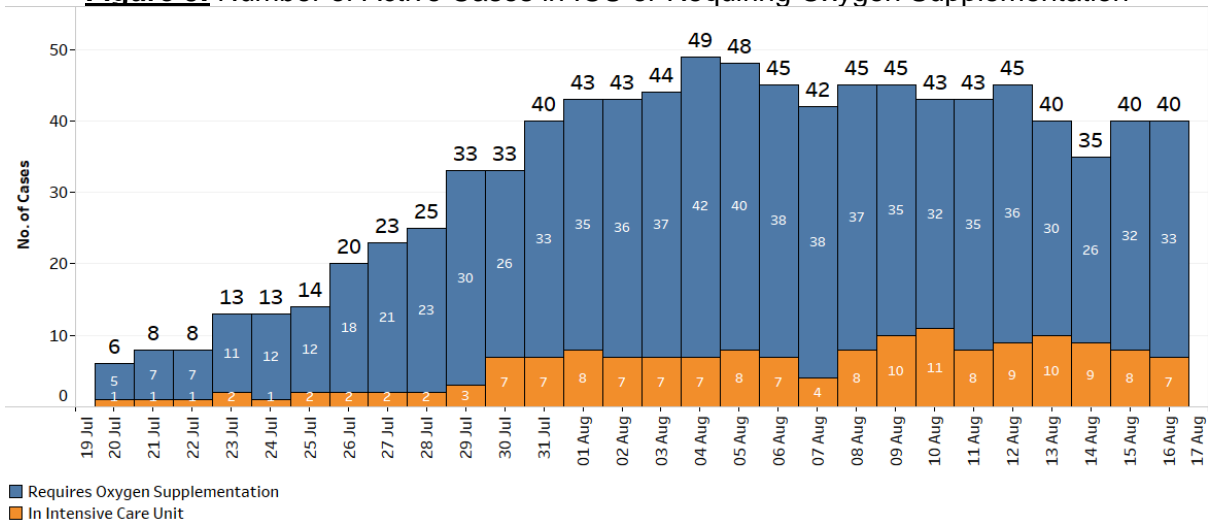
**Figure 4:** Total number of doses administered



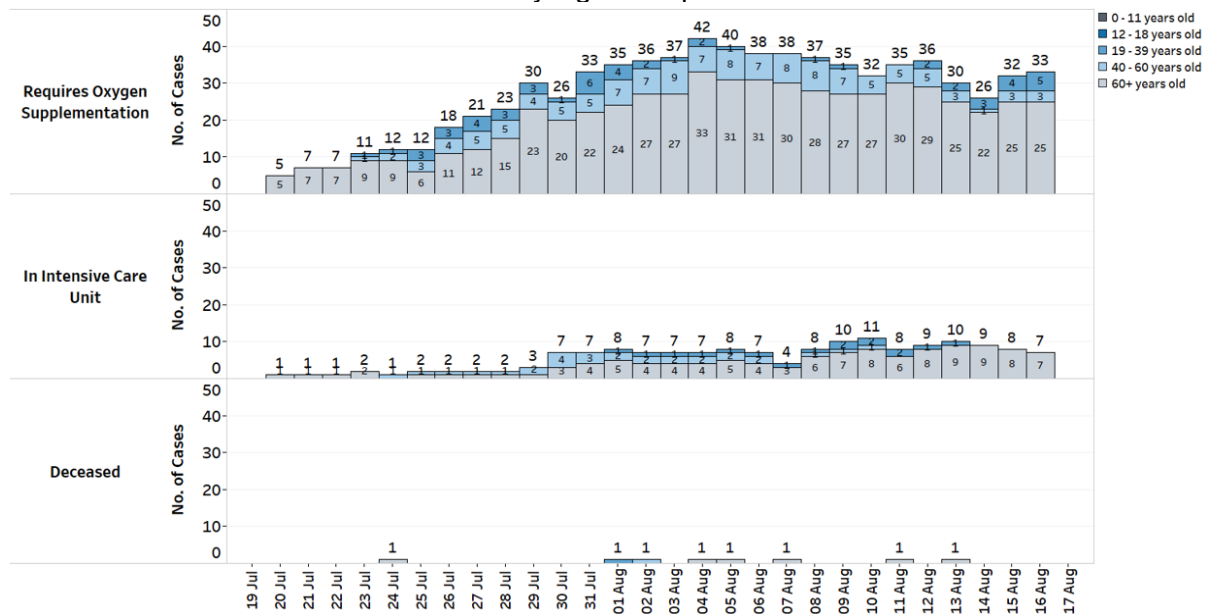
### Condition of hospitalised cases

3. 426 cases are currently warded in hospital. There are currently 33 cases of serious illness requiring oxygen supplementation, and 7 in critical condition in the ICU. 7 amongst these 40 cases are fully vaccinated. Of those who have fallen very ill, 32 are seniors above 60 years, of whom 26 are completely unvaccinated or partially vaccinated.

**Figure 5:** Number of Active Cases in ICU or Requiring Oxygen Supplementation

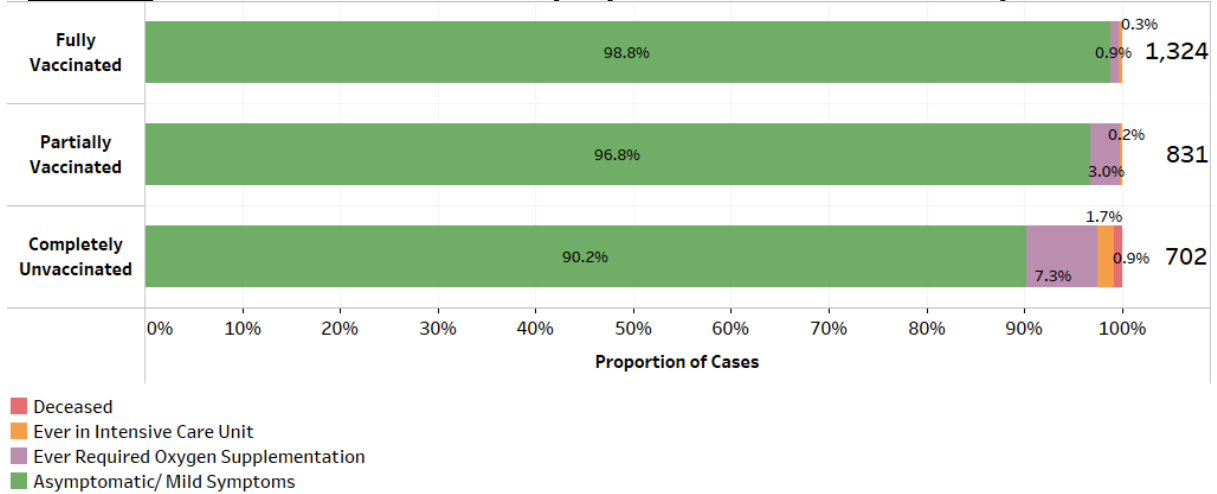


**Figure 6:** Deaths and Active Cases in ICU or Requiring Oxygen Supplementation, by Age Group

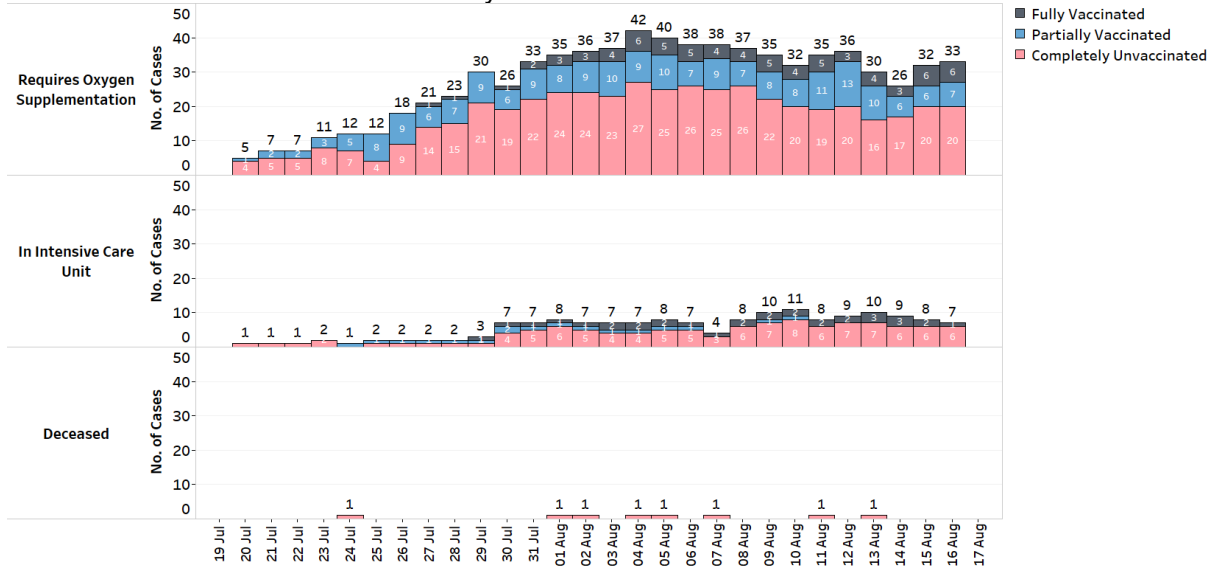


4. There is continuing evidence that almost all fully-vaccinated individuals do not suffer serious disease when infected, unless if they had underlying medical conditions that made them more susceptible. Over the last 28 days, the percentage of unvaccinated who became severely ill or died is 9.8%, while that for the fully vaccinated is 1.2%.

**Figure 7:** Local Cases in the Last 28 Days by Vaccination Status & Severity of Condition<sup>4</sup>



**Figure 8:** Deaths and Active Cases in ICU or Requiring Oxygen Supplementation, by Vaccination Status



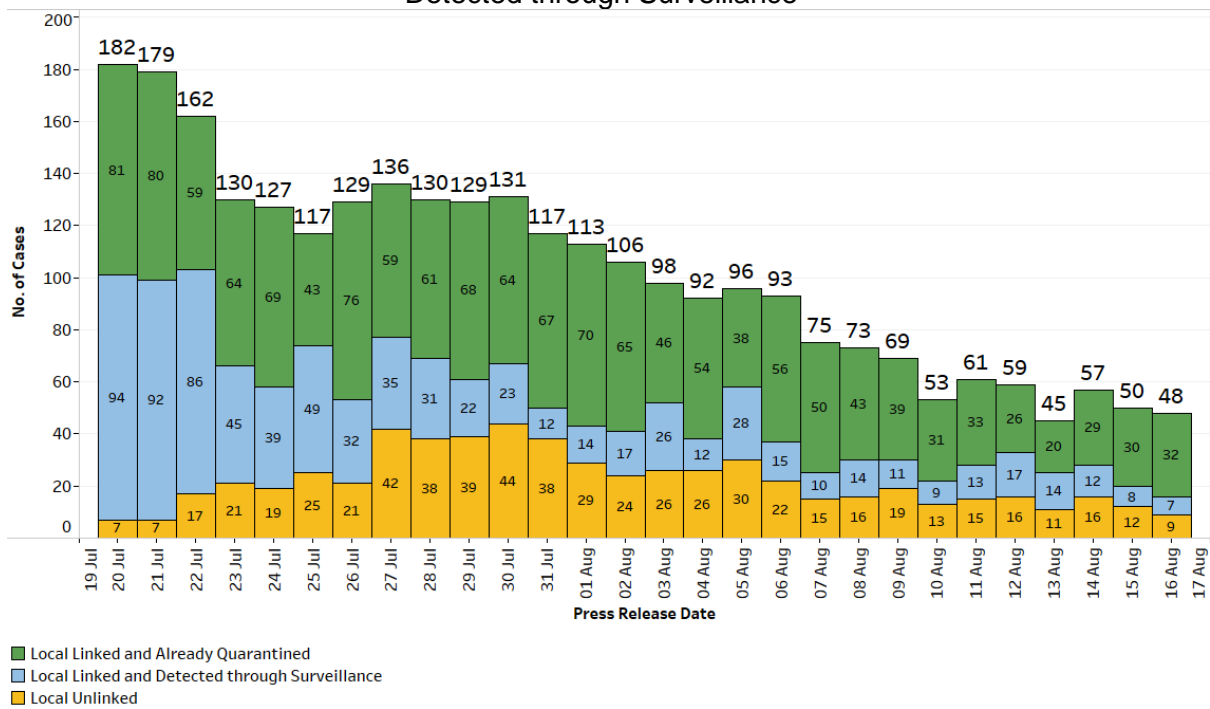
**Locally transmitted COVID-19 cases**

5. There are 48 cases of locally transmitted COVID-19 infection today. 32 are linked to previous cases, and have already been placed on quarantine. 7 are linked to previous cases and were detected through surveillance. 9 are currently unlinked.

6. There are 5 imported cases, who have already been placed on Stay-Home Notice (SHN) or isolated upon arrival in Singapore. In total, there are 53 new cases of COVID-19 infection in Singapore today.

<sup>4</sup> Fully vaccinated - more than 14 days after completing vaccination regimen (both doses of the vaccine or one dose for recovered individuals). Partially vaccinated – received 1 dose of 2-dose vaccine or COVID-positive within 14 days of completing vaccination regimen.

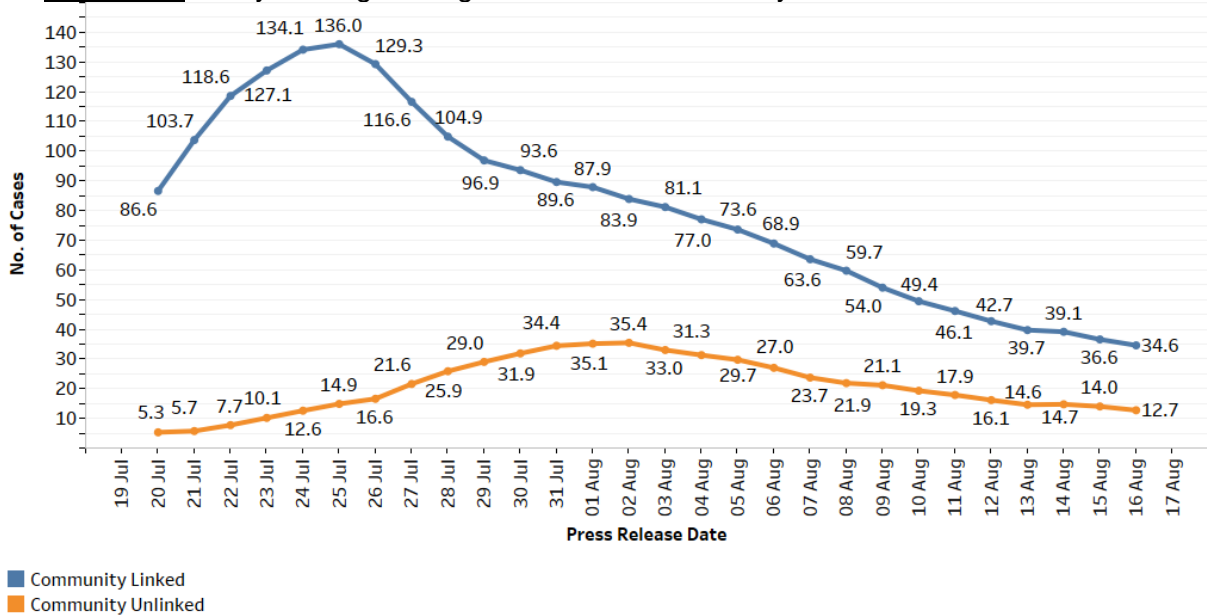
**Figure 9:** Number of Local Unlinked Cases and Linked Cases by Already Quarantined/ Detected through Surveillance<sup>5</sup>



**Summary of trends for local cases**

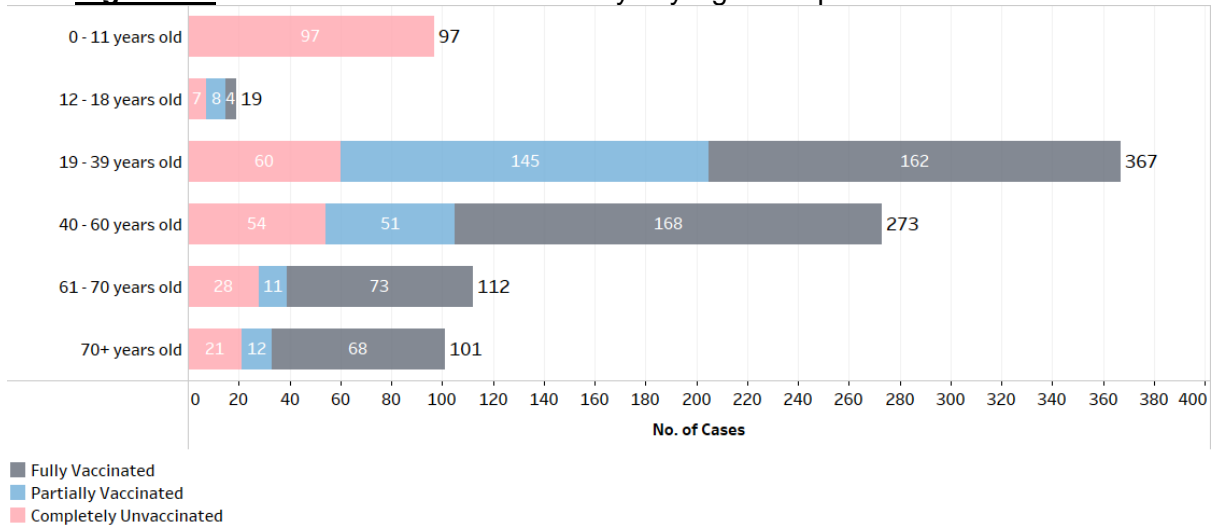
7. Overall, the number of new cases in the community has decreased from 526 cases in the week before to 331 cases in the past week. The number of unlinked cases in the community has also decreased from 148 cases in the week before to 89 cases in the past week. The 7-day moving average number of all linked community cases and all unlinked community cases are 34.6 and 12.7 respectively.

**Figure 10:** 7 Day Moving Average Number of Community Unlinked and Linked Cases<sup>5</sup>



<sup>5</sup> Incorporates re-classifications of earlier reported cases.

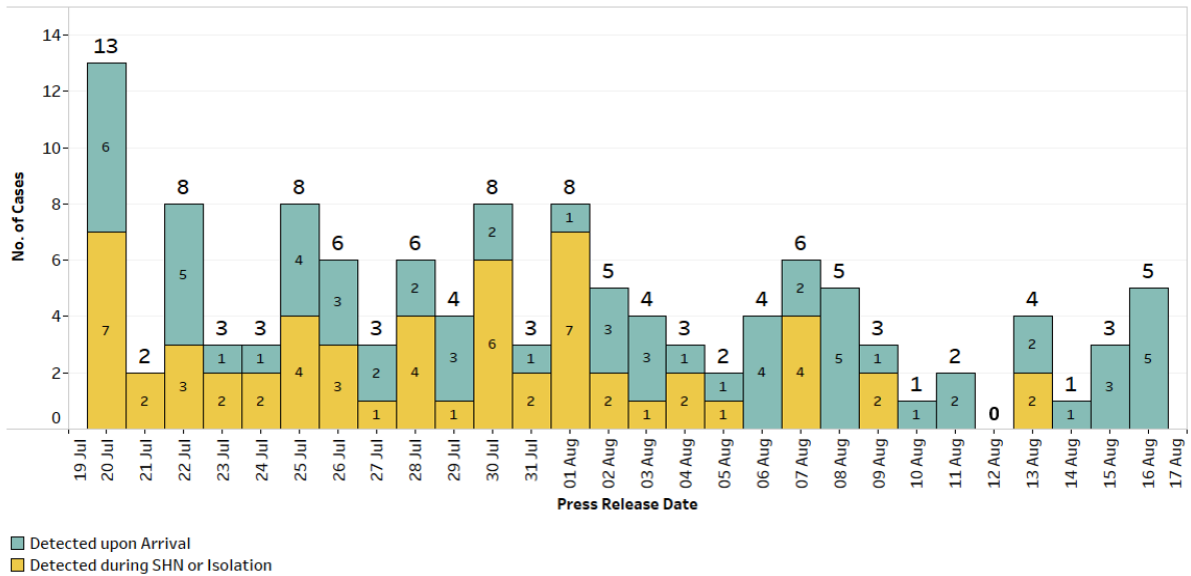
**Figure 11: Local Cases in the Last 14 Days by Age Group and Vaccination Status**



**Summary of trends for imported cases**

8. There are a total of 5 imported cases, who were detected upon arrival in Singapore.

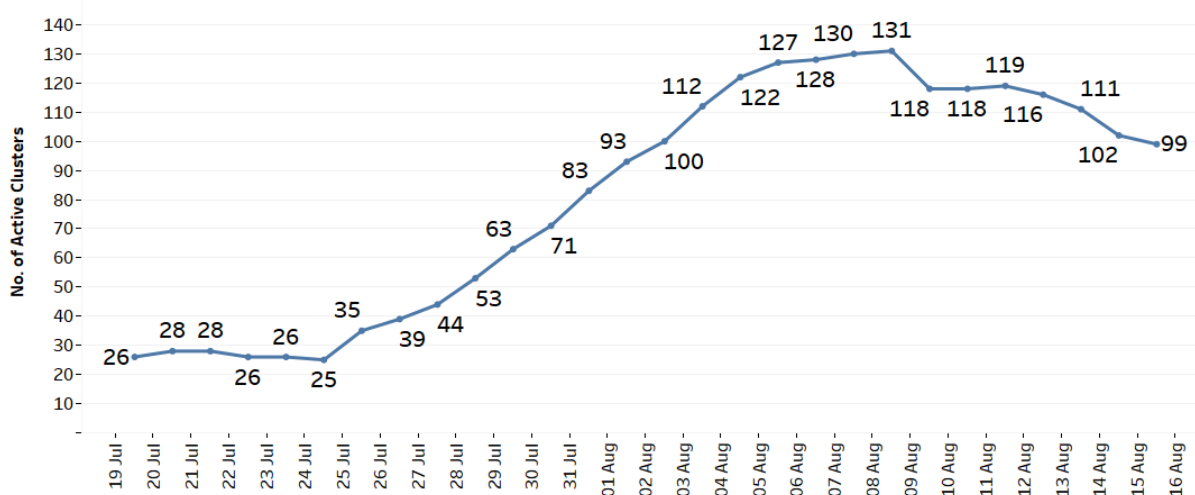
**Figure 12: Number of Imported Cases by Detected Upon Arrival/ Detected during SHN or Isolation**



**Active clusters under monitoring**

9. There is 1 new cluster today, and 4 clusters that have closed. There are currently 99 active clusters, ranging between 3 and 1,155 infections.

**Figure 13: Number of Active Clusters**



**Figure 14: List of Active Clusters**

Cluster	New Cases	Total <sup>6</sup>
43 Sungei Kadut Loop dormitory ( <i>new cluster</i> )	12	13
Bishan Bus Interchange staff	5	15
My First Skool (54 Chin Swee Road)	4	34
Kian Hiap Construction	2	17
Westlite Juniper Dormitory	2	52
SAFRA Tampines	1	17
North Bridge Road Market & Food Centre	1	15
Sin Ming 23 Coffee Shop	1	17
Superland Pre-School (Kreta Ayer Community Centre)	0	15
Sengkang Bus Interchange staff	0	16
Marina Bay Sands Casino	0	66
Case 67143	0	4
KTV lounges/clubs	0	253
Case 67302	0	3
Case 68131	0	4
Zuellig Pharma	0	12
Case 66567	0	34
Westlite Mandai Dormitory	0	14
Case 66838	0	4
Jurong Fishery Port/ Hong Lim Market & Food Centre*	0	1,155
Case 67045	0	3
Case 67353	0	5
NKF Dialysis Centre (Sakyadhita)	0	9
Case 67982	0	7
Case 67981	0	3
Case 66215	0	6

<sup>6</sup> Includes new cases added today.



Cluster	New Cases	Total <sup>6</sup>
Case 67343	0	40
Samy's Curry Restaurant	0	61
Punggol Primary School	0	17
Elsie's Kitchen	0	6
Jem	0	6
CHIJ Katong Convent	0	10
Case 66449	0	21
Case 67704	0	4
Chee Song Frozen Foods	0	7
Case 67651	0	8
Case 67283	0	12
Case 66244	0	8
Case 67425	0	5
Home's Favourite Pte Ltd	0	16
Case 67738	0	3
Nimble/Knead	0	7
Case 66542	0	4
Case 67436	0	7
Case 67582	0	9
Changi General Hospital	0	4
Case 66764	0	4
Case 66804	0	6
Case 66844	0	9
Case 67278	0	5
Case 67276	0	7
Case 67476	0	6
Case 66998	0	4
Case 65687	0	3
Case 66996	0	3
Case 67161	0	3
Case 67388	0	3
Case 67471	0	5
Case 67534	0	4
Case 67041	0	6
Case 67051	0	5
Case 66707	0	5
Case 66766	0	3
Case 66922	0	3
Case 67014	0	3
Case 67069	0	3
Case 67236	0	3
Case 66774	0	7

Cluster	New Cases	Total <sup>6</sup>
Case 67048	0	8
Institution S2 Selarang Park Complex	0	8
Case 65972	0	4
Case 66940	0	4
Case 67017	0	3
Case 67078	0	3
Case 67227	0	3
Seng Leong Steel (Ent) Pte Ltd	0	5
Case 66754	0	5
Case 67085	0	4
Case 67204	0	3
Case 67297	0	3
Case 66868	0	3
Case 66888	0	3
Case 66913	0	3
Case 67004	0	4
Yishun Community Hospital	0	4
Case 65751	0	8
Case 66464	0	7
Case 64697	0	76
Case 66293	0	3
Case 66142	0	3
Case 66538	0	4
Case 66468	0	3
Case 66377	0	5
Case 65893	0	6
Case 65360	0	10
Apex Medical Centre (Jurong)	0	3
Case 65979	0	3
Case 65791	0	4
Case 65342	0	3

\* Yuhua Market & Hawker Centre is currently linked to this cluster.

10. Please refer to MOH's daily Situation Report ([www.moh.gov.sg/covid-19/situation-report](http://www.moh.gov.sg/covid-19/situation-report)) for details.

**MINISTRY OF HEALTH**  
**16 AUGUST 2021**