



FOR IMMEDIATE RELEASE

UPDATE ON LOCAL COVID-19 SITUATION AND VACCINATION PROGRESS

Summary of local situation

- As of 20 August 2021, 12pm, the Ministry of Health (MOH) has confirmed and verified that there are 36 cases of locally transmitted COVID-19 infection and 4 imported cases.
- 380 cases are currently warded in hospital. Most are well and under observation. There are currently 27 cases of serious illness requiring oxygen supplementation, and 7 in critical condition in the intensive care unit (ICU).
- Over the last 28 days, the percentage of unvaccinated who became severely ill or died is 9.2%, while that for the fully vaccinated is 1.7%.
- As of 19 August 2021, 77% of our population has completed their full regimen/ received two doses of COVID-19 vaccines, and 82% has received at least one dose.

Update on vaccination progress

As of 19 August 2021, we have administered a total of 8,526,565 doses of COVID-19 vaccines under the national vaccination programme (Pfizer-BioNTech Comirnaty and Moderna), covering 4,459,200 individuals, with 4,200,032 individuals having completed the full vaccination regimen.

2. In addition, 154,936 doses of other vaccines recognised in the World Health Organization's Emergency Use Listing (WHO EUL) have been administered as of 19 August 2021, covering 84,281 individuals. In total, 77% of our population has completed their full regimen/ received two doses of COVID-19 vaccines, and 82% has received at least one dose.

Figure 1: Percentage of Total Population who Received At Least First Dose¹ and Completed Full Regimen² of NVP and WHO EUL Vaccines³

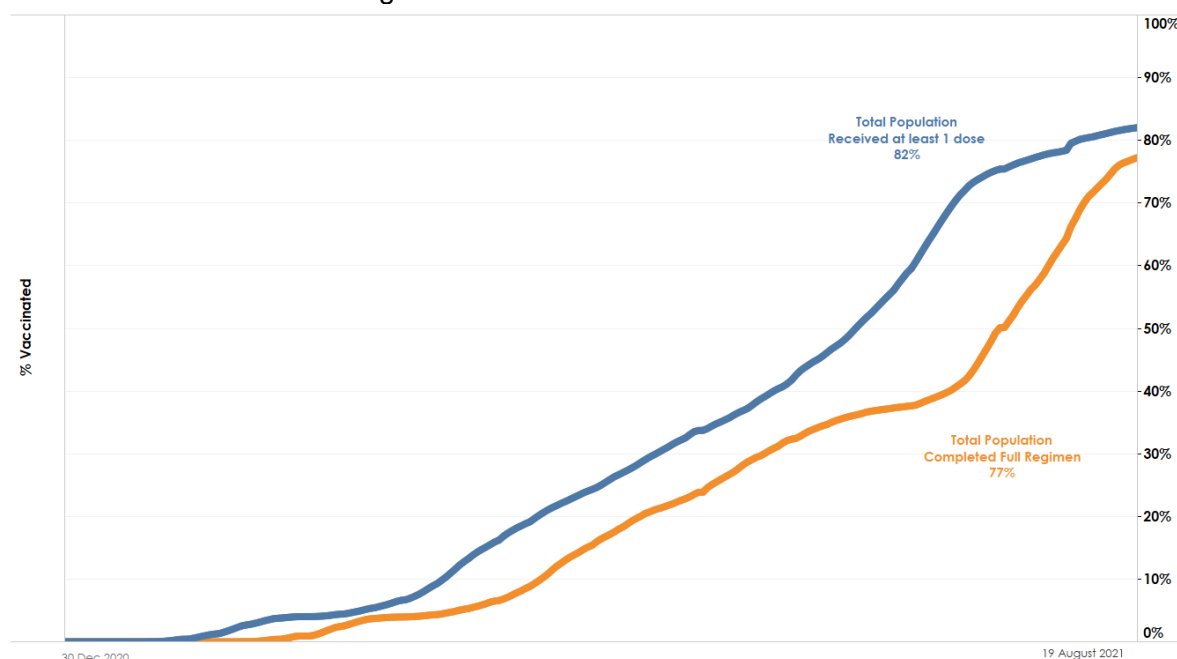
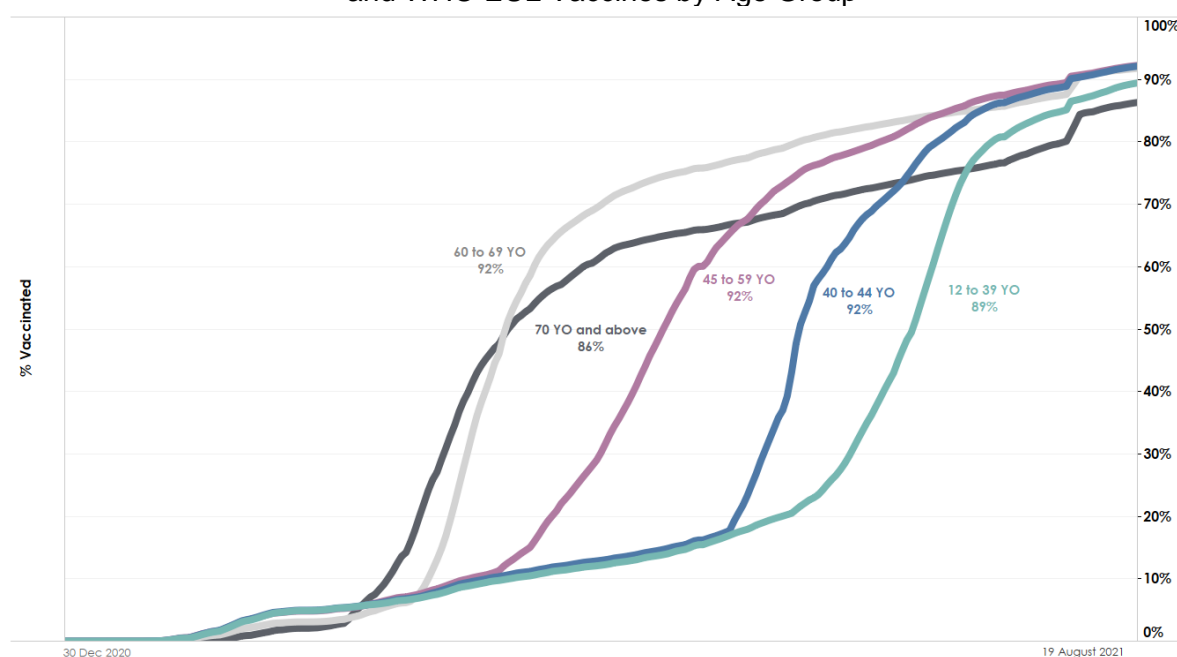


Figure 2: Percentage of Vaccinated Individuals who Received At Least First Dose of NVP and WHO EUL Vaccines by Age Group

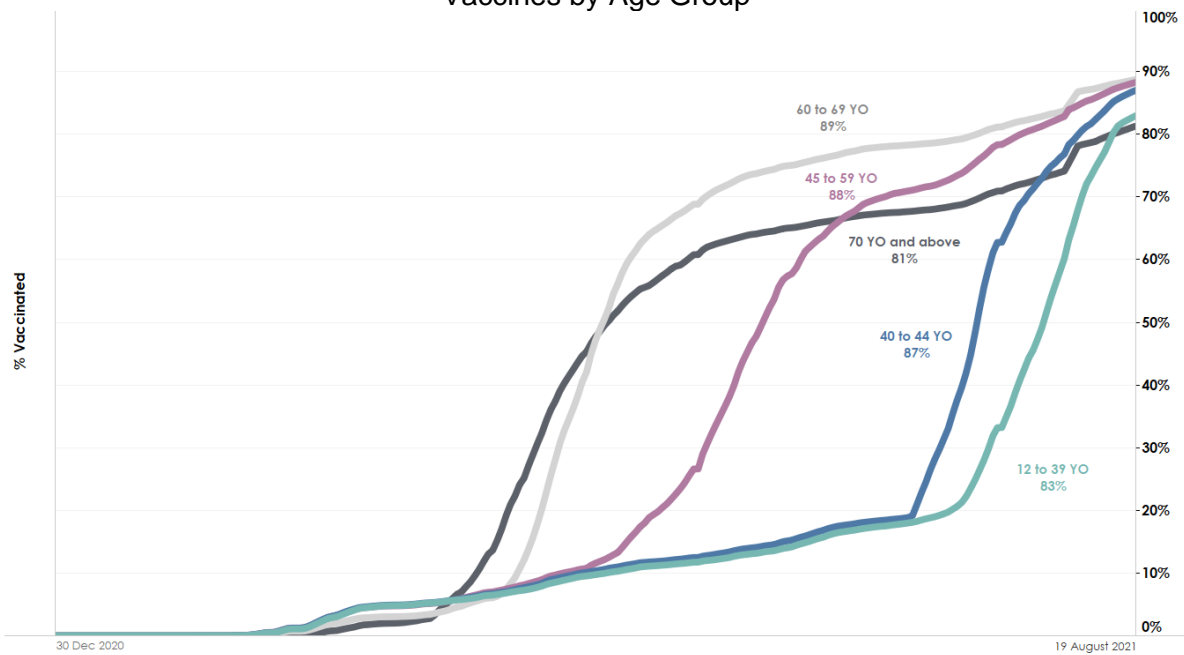


¹ Based on National Immunisation Registry data.

² Full regimen refers to individuals who have received both doses of the vaccine or one dose for vaccinated recovered individuals.

³ Other vaccines recognised in the WHO EUL account for about 2% of the total population who received at least 1 dose and about 1% of total population who completed the full regimen.

Figure 3: Percentage of Individuals who Completed Full Regimen of NVP and WHO EUL Vaccines by Age Group



Condition of hospitalised cases

3. 380 cases are currently warded in hospital. There are currently 27 cases of serious illness requiring oxygen supplementation, and 7 in critical condition in the ICU. Of those who have fallen very ill, 27 are seniors above 60 years, of whom 23 are completely unvaccinated or partially vaccinated.

4. Case 67178, an 82 year-old male Singaporean, has passed away from complications due to COVID-19 infection on 19 August 2021. He had developed symptoms on 30 July and was admitted to Alexandra Hospital after testing positive for COVID-19 on 31 July. He had not been vaccinated against COVID-19, and had a history of ischaemic heart disease, myocardial infarction, cystic kidney disease and hypertension. In total, 47 have passed away from complications due to COVID-19 infection.

Figure 4: Number of Active Cases in ICU or Requiring Oxygen Supplementation

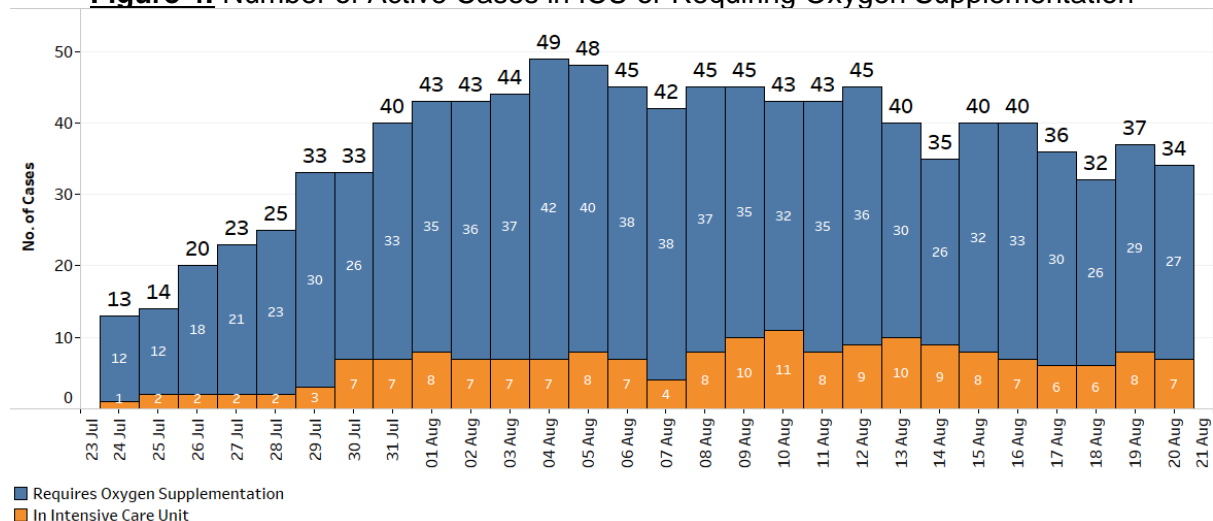
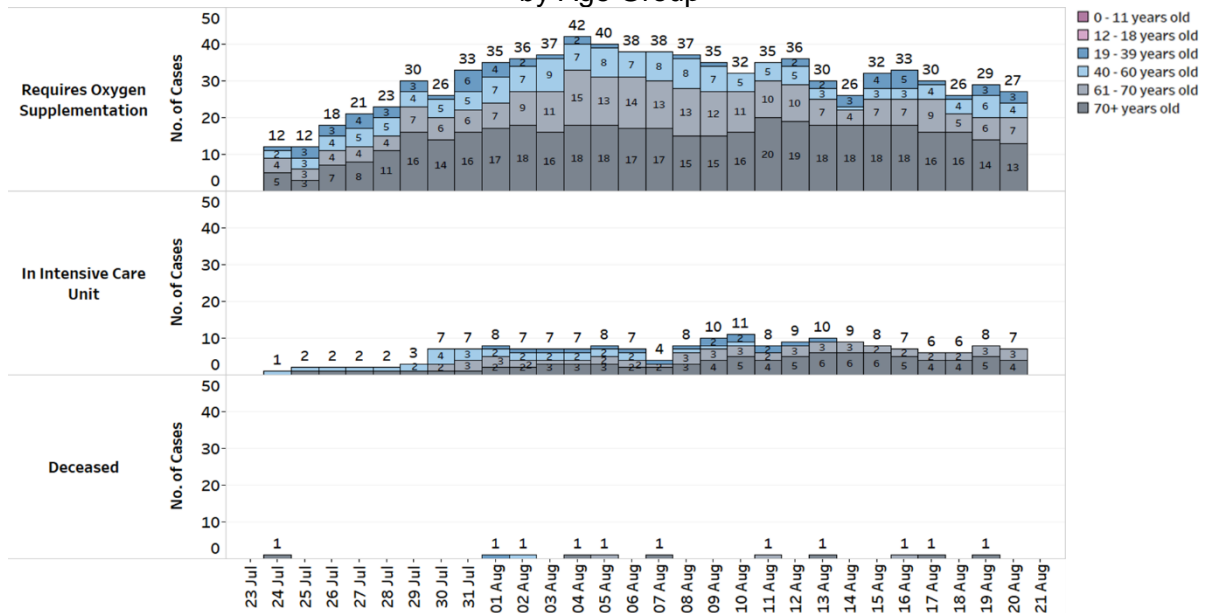
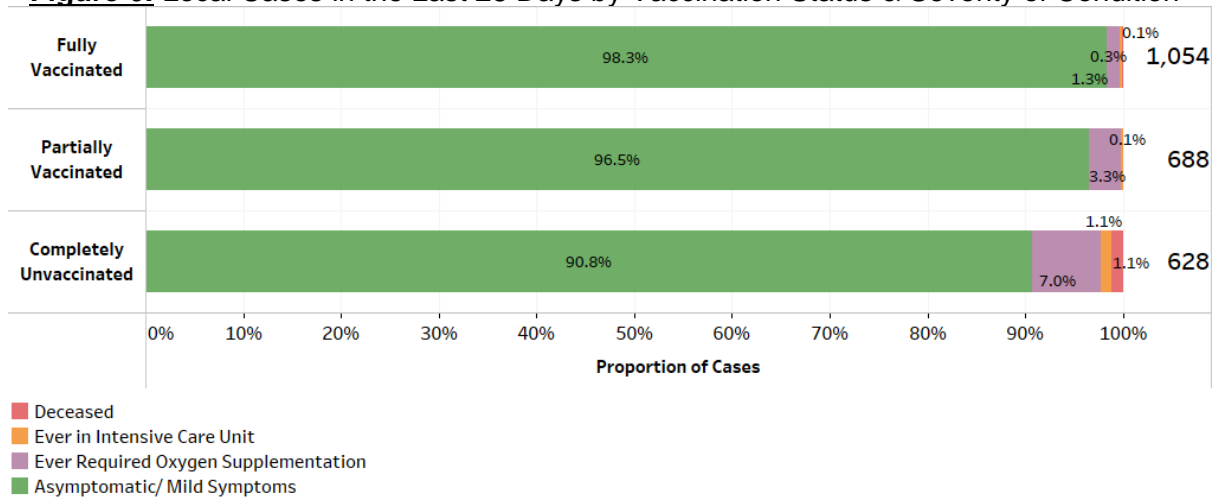


Figure 5: Deaths and Active Cases in ICU or Requiring Oxygen Supplementation, by Age Group



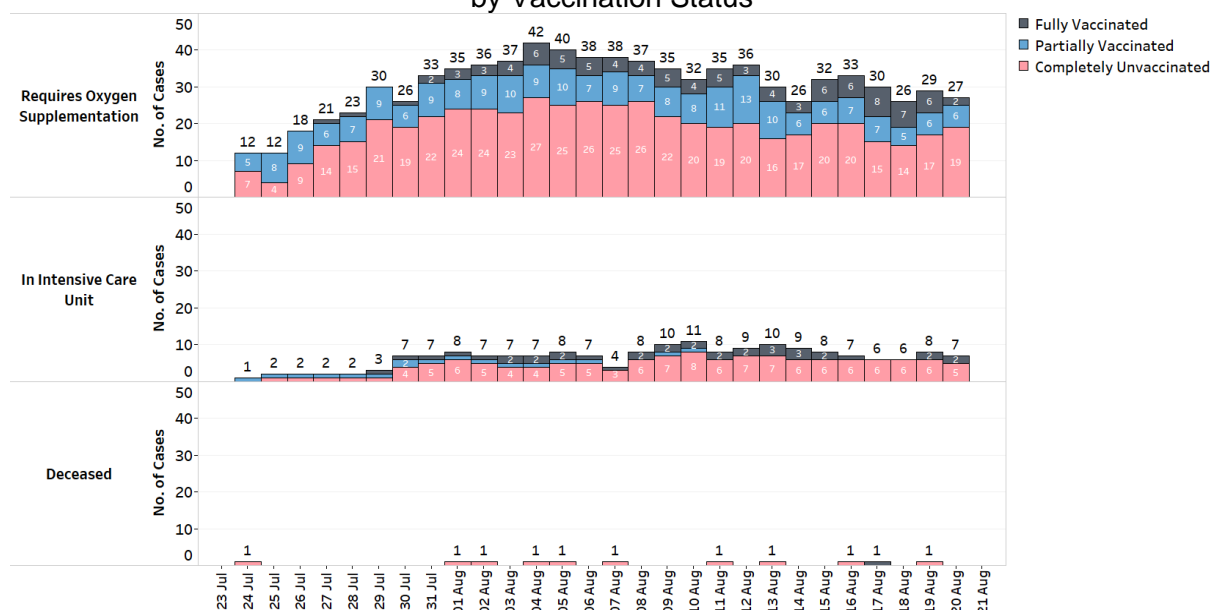
5. There is continuing evidence that almost all fully-vaccinated individuals do not suffer serious disease when infected, unless if they had underlying medical conditions that made them more susceptible. Over the last 28 days, the percentage of unvaccinated who became severely ill or died is 9.2%, while that for the fully vaccinated is 1.7%.

Figure 6: Local Cases in the Last 28 Days by Vaccination Status & Severity of Condition⁴



⁴ Fully vaccinated - more than 14 days after completing vaccination regimen (both doses of the vaccine or one dose for recovered individuals). Partially vaccinated – received 1 dose of 2-dose vaccine or COVID-positive within 14 days of completing vaccination regimen.

Figure 7: Deaths and Active Cases in ICU or Requiring Oxygen Supplementation, by Vaccination Status

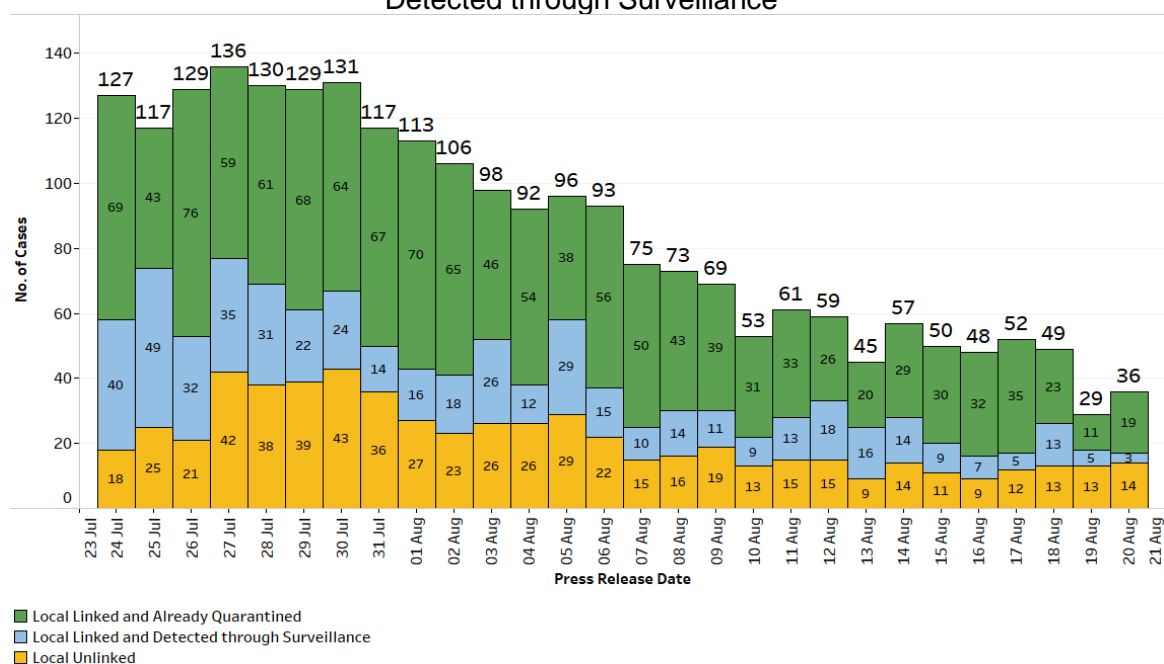


Locally transmitted COVID-19 cases

6. There are 36 cases of locally transmitted COVID-19 infection today. 19 are linked to previous cases, and have already been placed on quarantine. 3 are linked to previous cases and were detected through surveillance. 14 are currently unlinked.

7. There are 4 imported cases, who have already been placed on Stay-Home Notice (SHN) or isolated upon arrival in Singapore. In total, there are 40 new cases of COVID-19 infection in Singapore today.

Figure 8: Number of Local Unlinked Cases and Linked Cases by Already Quarantined/ Detected through Surveillance⁵



⁵ Incorporates re-classifications of earlier reported cases.

Summary of trends for local cases

8. Overall, the number of new cases in the community has decreased from 380 cases in the week before to 281 cases in the past week. The number of unlinked cases in the community has also decreased from 99 cases in the week before to 84 cases in the past week. The 7-day moving average number of all linked community cases and all unlinked community cases are 28.1 and 12.0 respectively.

Figure 9: 7 Day Moving Average Number of Community Unlinked and Linked Cases⁵

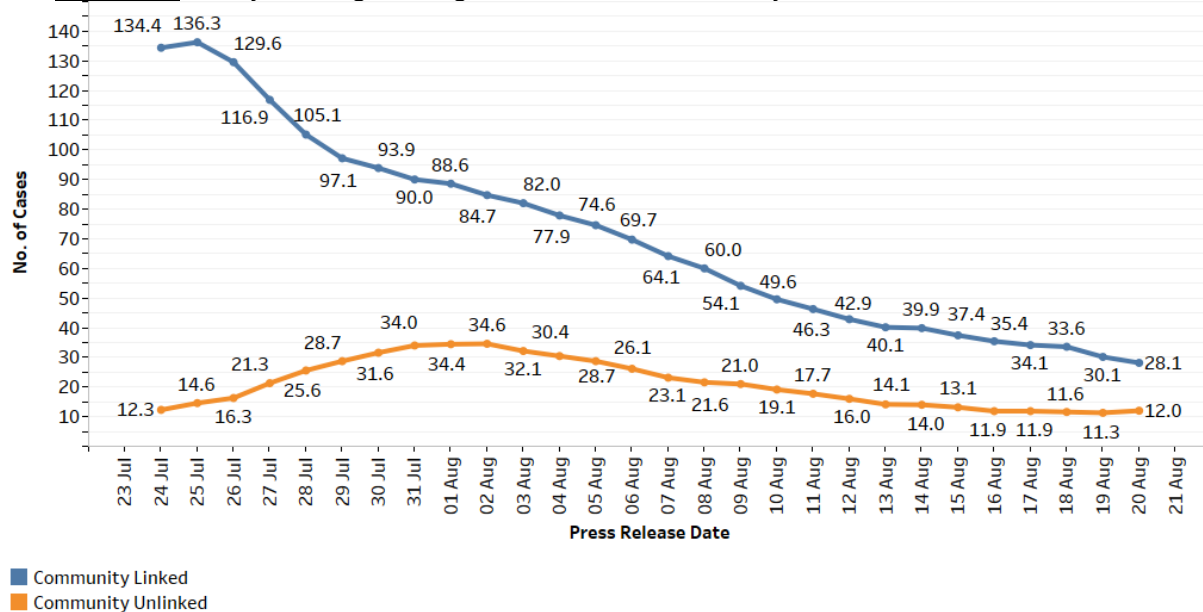
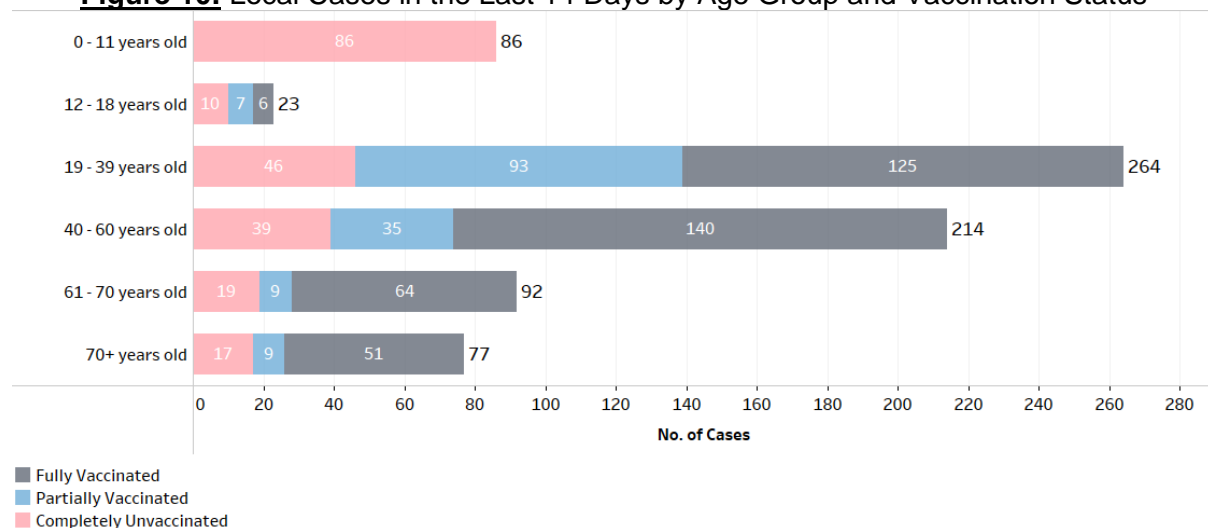


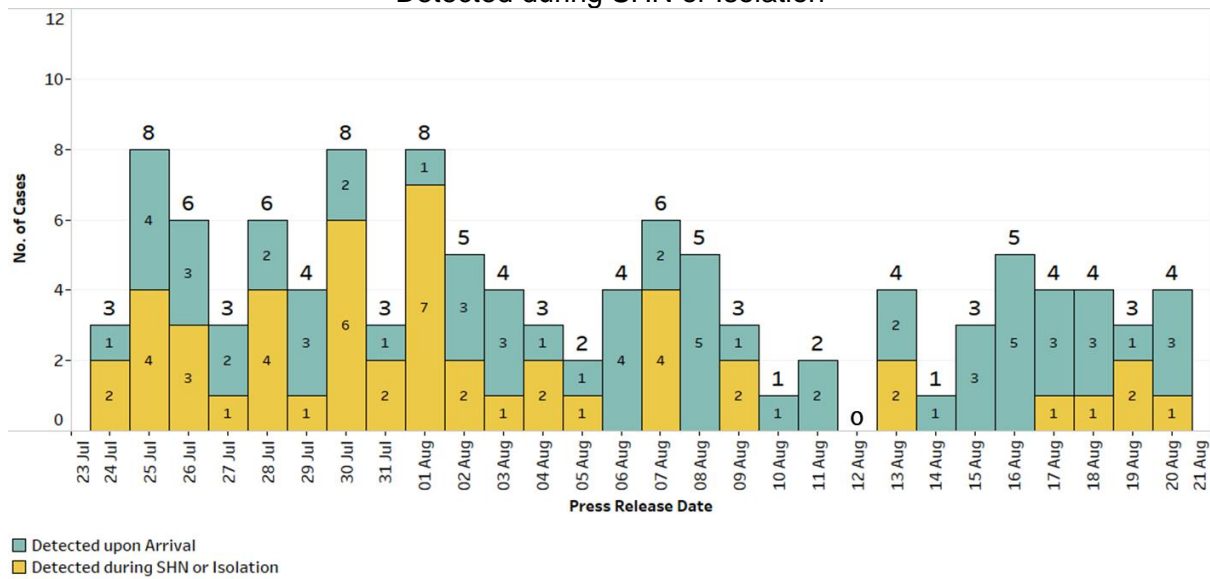
Figure 10: Local Cases in the Last 14 Days by Age Group and Vaccination Status



Summary of trends for imported cases

9. There are a total of 4 imported cases. Of these, 3 were detected upon arrival in Singapore, while 1 developed the illness during SHN or isolation.

Figure 11: Number of Imported Cases by Detected Upon Arrival/
Detected during SHN or Isolation



Active clusters under monitoring

10. There are 2 new clusters today, and 9 clusters have closed. There are currently 77 active clusters, ranging between 3 and 1,155 infections.

Figure 12: Number of Active Clusters

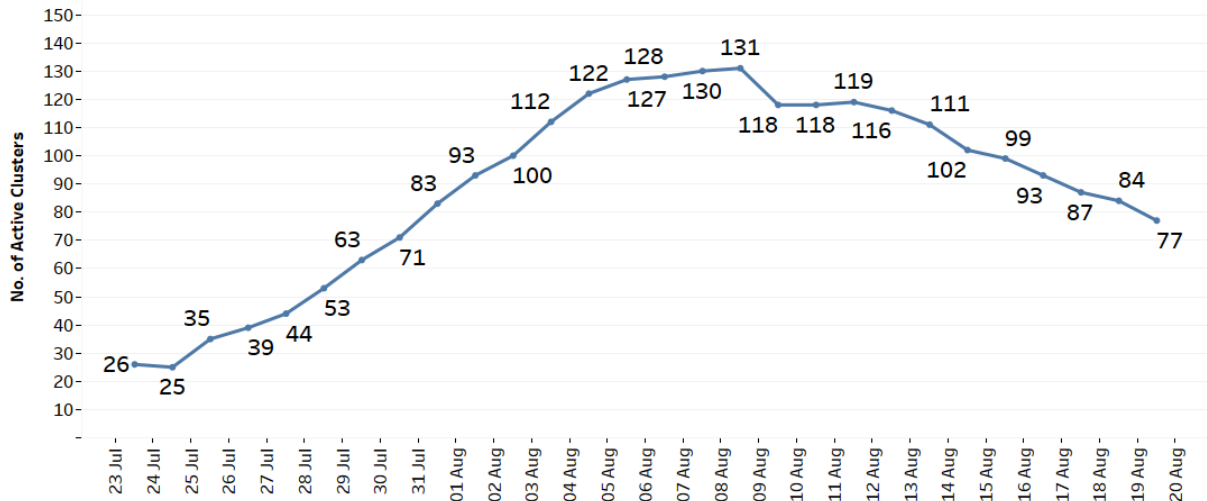


Figure 13: List of Active Clusters

Cluster	New Cases	Total ⁶
FairPrice (Kallang Bahru) (<i>new cluster</i>)	2	4
Case 68647 (<i>new cluster</i>)	2	3
Sengkang Bus Interchange staff	2	22
Giant (683 Hougang Avenue 8)	1	8

⁶ Includes new cases added today.

Cluster	New Cases	Total ⁶
SAFRA Tampines	1	18
Westlite Juniper Dormitory	1	71
Case 67343	1	42
Case 67220	0	32
Case 68431	0	7
Superland Pre-School (Kreta Ayer Community Centre)	0	17
My First Skool (54 Chin Swee Road)	0	38
43 Sungei Kadut Loop dormitory	0	14
Chee Song Frozen Foods	0	8
Case 67651	0	9
North Bridge Road Market & Food Centre	0	16
Bishan Bus Interchange staff	0	15
Kian Hiap Construction	0	17
Sin Ming 23 Coffee Shop	0	17
Marina Bay Sands Casino	0	66
KTV lounges/clubs	0	253
Case 67302	0	3
Case 68131	0	4
Zuellig Pharma	0	12
Case 66567	0	34
Westlite Mandai Dormitory	0	14
Case 66838	0	4
Jurong Fishery Port/ Hong Lim Market & Food Centre	0	1,155
Case 67045	0	3
Case 67353	0	5
NKF Dialysis Centre (Sakyadhita)	0	9
Case 67982	0	7
Case 67981	0	3
Case 66215	0	6
Samy's Curry Restaurant	0	61
Punggol Primary School	0	17
Elsie's Kitchen	0	6
Jem	0	6
CHIJ Katong Convent	0	10
Case 66449	0	21
Case 67704	0	4
Case 67283	0	12
Case 66244	0	8
Case 67425	0	5
Home's Favourite Pte Ltd	0	16
Case 67738	0	3
Nimble/Knead	0	7

Cluster	New Cases	Total ⁶
Case 66542	0	4
Case 67436	0	7
Case 67582	0	9
Changi General Hospital	0	4
Case 66764	0	4
Case 66804	0	6
Case 66844	0	9
Case 67276	0	7
Case 66996	0	3
Case 67051	0	5
Case 66922	0	3
Case 67236	0	3
Institution S2 Selarang Park Complex	0	8
Case 65972	0	4
Case 67078	0	3
Seng Leong Steel (Ent) Pte Ltd	0	5
Yishun Community Hospital	0	4
Case 65751	0	8
Case 66464	0	7
Case 64697	0	76
Case 66293	0	3
Case 66142	0	3
Case 66538	0	4
Case 66468	0	3
Case 66377	0	5
Case 65893	0	6
Case 65360	0	10
Apex Medical Centre (Jurong)	0	3
Case 65979	0	3
Case 65791	0	4
Case 65342	0	3

11. Please refer to MOH's daily Situation Report (www.moh.gov.sg/covid-19/situation-report) for details.

MINISTRY OF HEALTH
20 AUGUST 2021